

Department for Social Development

**Disability Living Allowance
Attendance Allowance
Invalid Care Allowance**

Summary of Statistics

August 2002

DSD

**Department for
Social Development**



A National Statistics Publication

Published BY

Statistics & Research Branch

Department for Social Development
Room 3 Block 4,
The Village, Stormont,
Belfast, BT4 3SJ

Telephone: 02890 5/23339

GTN (440) 23339

Fax: 02890 5/22763

e-mail: srb@dndi.gov.uk

ISSN 1475-5491

Further Statistics for Northern Ireland relating to Social Security Benefits can be obtained by visiting our website;

<http://www.dndi.gov.uk/statistics-research/introduction.asp>

Statistics relating to Social Security Benefits in Great Britain can be obtained by visiting the following website;

<http://www.dss.gov.uk/asd/online.html>

Contents

| | Page |
|--|------|
| Glossary of terms and conventions | 2 |
| Section 1: Disability Living Allowance | 3 |
| Section 2: Attendance Allowance..... | 15 |
| Section 3: Invalid Care Allowance..... | 25 |
| Annex..... | 31 |



Glossary of terms and conventions

Glossary of terms

Allowances current

The number of people in receipt of DLA or AA. This excludes people with entitlement where payment has been suspended.

Main disabling condition

This is the medical cause of the main disability which gives rise to the award of DLA or AA.

Review

A person who is dissatisfied with the result of their last claim can ask for the claim to be reviewed.

Conventions

.. Not available



Section 1: Disability Living Allowance

| | Page |
|---|------|
| Table 1.1: DLA allowances current | 5 |
| Table 1.2: Decisions on initial claims | 6 |
| Table 1.3: Decisions on review | 7 |
| Table 1.4: Awards by sex and age in year ending 31 August 2002 | 7 |
| Table 1.5: Awards by main disabling condition in year ending 31 August 2002 | 8 |
| Table 1.6: DLA allowances current by age and sex at 31 August 2002..... | 9 |
| Chart 1.1: DLA allowances current..... | 10 |
| Chart 1.2: DLA allowances current by age and sex at 31 August 2002 | 10 |
| Table 1.7: Allowances current by main disabling condition at 31 August 2002.. | 11 |
| Table 1.8: Allowances current by District Council and Sex at 31 August 2002 | 12 |
| Table 1.9: Allowances current by District Council and Population at 31 August 2002 | 13 |
| Table 1.10: Rates of DLA..... | 14 |



Introduction

Disability Living Allowance (DLA) replaced and extended Attendance Allowance and Mobility Allowance in April 1992 for people who became disabled before the age of 65. People already in receipt of either Attendance Allowance or Mobility Allowance before April 1992 were invited to make a 'top up' claim for the other component.

DLA is payable to people who are disabled and who have personal care needs, mobility needs or both. DLA consists of two components:

The care component: for people who need help with personal care;

The mobility component: for people who need help with getting around (this component is not available to children under five).

The care component is paid at one of three rates and the mobility component at one of two rates. These are shown in table 1.10.

To qualify for DLA the need for help must have existed for three months (the qualifying period) and be expected to last for at least a further six months (the prospective test). People who are not expected to live longer than six months because of an illness do not have to satisfy either the qualifying period or the prospective test. Once awarded, DLA will continue to be paid as long as the conditions of entitlement are met.



Table 1.1: DLA allowances current

| | May 1999 | August 1999 | November 1999 | February 2000 | May 2000 | August 2000 | November 2000 |
|---|---------------|----------------|------------------|------------------|---------------|----------------|------------------|
| All components | 126190 | 127745 | 128677 | 130536 | 132062 | 133965 | 136450 |
| Higher rate care only | 2681 | 2547 | 2463 | 2430 | 2352 | 2322 | 2310 |
| Middle rate care only | 7618 | 7447 | 7273 | 7316 | 7257 | 7323 | 7424 |
| Lower rate care only | 10701 | 10730 | 10639 | 10615 | 10562 | 10484 | 10340 |
| Higher rate mobility only | 12139 | 12041 | 12000 | 11969 | 11960 | 11903 | 11942 |
| Lower rate mobility only | 3521 | 3571 | 3586 | 3596 | 3639 | 3619 | 3608 |
| Higher rate care and higher rate mobility | 21611 | 21769 | 21865 | 22026 | 22213 | 22490 | 22897 |
| Higher rate care and lower rate mobility | 8903 | 9296 | 9542 | 9852 | 10040 | 10330 | 10715 |
| Middle rate care and higher rate mobility | 24549 | 24944 | 25224 | 25687 | 26096 | 26718 | 27543 |
| Middle rate care and lower rate mobility | 14163 | 15108 | 15869 | 16885 | 17899 | 18833 | 19905 |
| Lower rate care and higher rate mobility | 15669 | 15723 | 15699 | 15764 | 15831 | 15908 | 15925 |
| Lower rate care and lower rate mobility | 4635 | 4569 | 4517 | 4396 | 4213 | 4035 | 3841 |

1.1 continued

| | February 2001 | May 2001 | August 2001 | November 2001 | February 2002 | May 2002 | August 2002 |
|---|------------------|---------------|----------------|------------------|------------------|---------------|----------------|
| All components | 137505 | 139812 | 141451 | 142984 | 144460 | 145741 | 146979 |
| Higher rate care only | 2253 | 2136 | 2094 | 2046 | 2031 | 2017 | 2027 |
| Middle rate care only | 7402 | 7411 | 7362 | 7312 | 7355 | 7391 | 7588 |
| Lower rate care only | 10218 | 10218 | 10226 | 10093 | 10119 | 10122 | 10166 |
| Higher rate mobility only | 12014 | 12209 | 12110 | 12113 | 12159 | 12442 | 12530 |
| Lower rate mobility only | 3554 | 3478 | 3613 | 3641 | 3699 | 4116 | 4156 |
| Higher rate care and higher rate mobility | 23032 | 23444 | 23756 | 24184 | 24422 | 24499 | 24674 |
| Higher rate care and lower rate mobility | 10885 | 11110 | 11260 | 11500 | 11599 | 11573 | 11622 |
| Middle rate care and higher rate mobility | 27947 | 28540 | 29005 | 29442 | 29792 | 30020 | 30417 |
| Middle rate care and lower rate mobility | 20568 | 21558 | 22361 | 23055 | 23658 | 23858 | 24121 |
| Lower rate care and higher rate mobility | 15904 | 16038 | 16035 | 16018 | 16009 | 16108 | 16166 |
| Lower rate care and lower rate mobility | 3728 | 3670 | 3629 | 3580 | 3617 | 3595 | 3512 |



Table 1.2: Decisions on initial claims¹

| | 1995/96 | 1996/97 | 1997/98 | 1998/99 | 1999/00 ³ | 2000/01 | 2001/02 | 1.04.02 to 31.08.02 |
|--|--------------|--------------|--------------|--------------|----------------------|--------------|--------------|------------------------|
| Initial claims | 35515 | 35055 | 27908 | 21860 | 21622 | 26963 | 25186 | 9832 |
| Initial claims decided | 35148 | 34822 | 27730 | 21750 | 20587 | 23791 | 22115 | 8715 |
| First awards ¹ : | | | | | | | | |
| All first awards | 15495 | 15282 | 13535 | 12530 | 11657 | 14628 | 13703 | 5381 |
| Higher rate care only | 267 | 720 | 610 | 458 | 392 | 489 | 463 | 191 |
| Middle rate care only | 889 | 1433 | 1280 | 1017 | 1142 | 1495 | 1311 | 647 |
| Lower rate care only | 2205 | 2190 | 2331 | 1530 | 1439 | 1432 | 1251 | 476 |
| Higher rate mobility only | 1874 | 1669 | 1101 | 565 | 602 | 864 | 902 | 348 |
| Lower rate mobility only | 293 | 446 | 529 | 527 | 436 | 491 | 500 | 179 |
| Higher rate care &:- higher rate mobility | 1772 | 1768 | 1377 | 1520 | 1108 | 1268 | 1208 | 487 |
| lower rate mobility | 874 | 587 | 677 | 1420 | 1121 | 1436 | 1292 | 549 |
| Middle rate care &:- higher rate mobility | 3138 | 2578 | 1865 | 1597 | 1484 | 2290 | 2032 | 813 |
| lower rate mobility | 1620 | 777 | 1050 | 1962 | 2510 | 3347 | 3320 | 1170 |
| Lower rate care &:- higher rate mobility | 2119 | 2543 | 1808 | 1120 | 1024 | 1188 | 1104 | 437 |
| lower rate mobility | 444 | 571 | 607 | 814 | 399 | 328 | 320 | 84 |
| Rejections | 19653 | 19540 | 14195 | 9220 | 8930 | 9163 | 8412 | 3334 |

1. Figures do not include first awards made as a result of review or appeal decisions.

2. Excludes January 2000 data, which are not available



Table 1.3: Decisions on review

| Year | 1995/96 | 1996/97 | 1997/98 | 1998/99 | 1999/00 ² | 2000/01 ³ | 2001/02 ³ | 1.04.02 to 31.08.02 ³ |
|----------------------|--------------|--------------|--------------|--------------|----------------------|----------------------|----------------------|-------------------------------------|
| Requests for review | 21261 | 22486 | 22556 | 15215 | 12429 | 16708 | 14597 | 5217 |
| Decisions | | | | | | | | |
| All decisions | 19614 | 21699 | 21901 | 14820 | 12182 | 16352 | 14384 | 5191 |
| Review allowed | 2655 | 2489 | 1781 | 1080 | 548 | 1991 | 2346 | 798 |
| Award increased(1) | 5105 | 4621 | 4347 | 3909 | 3170 | 4498 | 4321 | 1687 |
| Other decisions | 11854 | 14589 | 15773 | 9831 | 8464 | 9863 | 7717 | 2706 |

1. Rates of either component are increased.

2. Excludes January 2000 data, which are not available

3. Includes in and out-of-time reviews, reconsiderations and supersessions

Table 1.4: Awards by sex and age in year ending 31 August 2002¹

| | Total | Men | Women |
|-----------------|--------------|-------------|-------------|
| All ages | 17662 | 8763 | 8899 |
| 0-4 | 853 | 536 | 317 |
| 5-9 | 691 | 458 | 233 |
| 10-15 | 569 | 344 | 225 |
| 16-19 | 392 | 195 | 197 |
| 20-24 | 649 | 315 | 334 |
| 25-29 | 800 | 384 | 416 |
| 30-34 | 1142 | 519 | 623 |
| 35-39 | 1527 | 708 | 819 |
| 40-44 | 1630 | 762 | 868 |
| 45-49 | 1623 | 754 | 869 |
| 50-54 | 1984 | 913 | 1071 |
| 55-59 | 2460 | 1164 | 1296 |
| 60-64 | 2350 | 1224 | 1126 |
| 65 and over | 992 | 487 | 505 |

1. Figures relate to first awards made as a result of initial claims, reviews or appeals.



Table 1.5: Awards by main disabling condition in year ending 31 August 2002^{1 2}

| | All Awards | Care component only | Mobility component only | Care and mobility component |
|----------------------------|-------------------|---------------------|-------------------------|-----------------------------|
| All conditions | 17662 | 6185 | 2127 | 9350 |
| Terminally ill | 697 | 228 | 12 | 457 |
| Arthritis | 2230 | 1000 | 344 | 886 |
| Back ailments | 1246 | 384 | 197 | 665 |
| Muscles/joint/bone disease | 1697 | 738 | 229 | 730 |
| Trauma to limbs | 144 | 58 | 23 | 63 |
| Blindness | 169 | 66 | 28 | 75 |
| Deafness | 129 | 42 | 23 | 64 |
| Heart disease | 1019 | 368 | 248 | 403 |
| Chest disease | 383 | 159 | 71 | 153 |
| Asthma | 493 | 325 | 74 | 94 |
| Stroke-related | 291 | 103 | 31 | 157 |
| Epilepsy | 411 | 82 | 25 | 304 |
| Neurological disorder | 350 | 113 | 28 | 209 |
| Multiple sclerosis | 148 | 58 | 4 | 86 |
| Chronic fatigue | 217 | 82 | 22 | 113 |
| Diabetes | 362 | 156 | 33 | 173 |
| Learning difficulties | 530 | 259 | 65 | 206 |
| Other mental health causes | 5193 | 1165 | 539 | 3489 |
| Alcohol abuse | 605 | 200 | 18 | 387 |
| Renal disorders | 96 | 40 | 12 | 44 |
| Bowels/stomach disorder | 110 | 66 | 12 | 32 |
| Skin disease | 175 | 145 | 6 | 24 |
| Malignant disease | 499 | 169 | 25 | 305 |
| Other | 468 | 179 | 58 | 231 |

1. Figures relate to first awards made as a result of initial claims, reviews and appeals.

2. Where more than one disability is present only the main disabling condition is recorded.



Table 1.6: DLA allowances current by age and sex at 31 August 2002

| | Total | Men | Women |
|-----------------|---------------|--------------|--------------|
| All ages | 146979 | 69972 | 77007 |
| 0-4 | 2021 | 1228 | 793 |
| 5-9 | 4511 | 2963 | 1548 |
| 10-15 | 5147 | 3239 | 1908 |
| 16-19 | 2552 | 1420 | 1132 |
| 20-24 | 3750 | 1950 | 1800 |
| 25-29 | 4642 | 2346 | 2296 |
| 30-34 | 6984 | 3307 | 3677 |
| 35-39 | 9762 | 4530 | 5232 |
| 40-44 | 11140 | 4990 | 6150 |
| 45-49 | 11909 | 5557 | 6352 |
| 50-54 | 14144 | 6385 | 7759 |
| 55-59 | 18276 | 8293 | 9983 |
| 60-64 | 19788 | 9275 | 10513 |
| 65-69 | 18502 | 8444 | 10058 |
| 70-74 | 11754 | 5196 | 6558 |
| 75-79 | 1792 | 728 | 1064 |
| 80 and over | 305 | 121 | 184 |



Chart 1.1: DLA allowances current

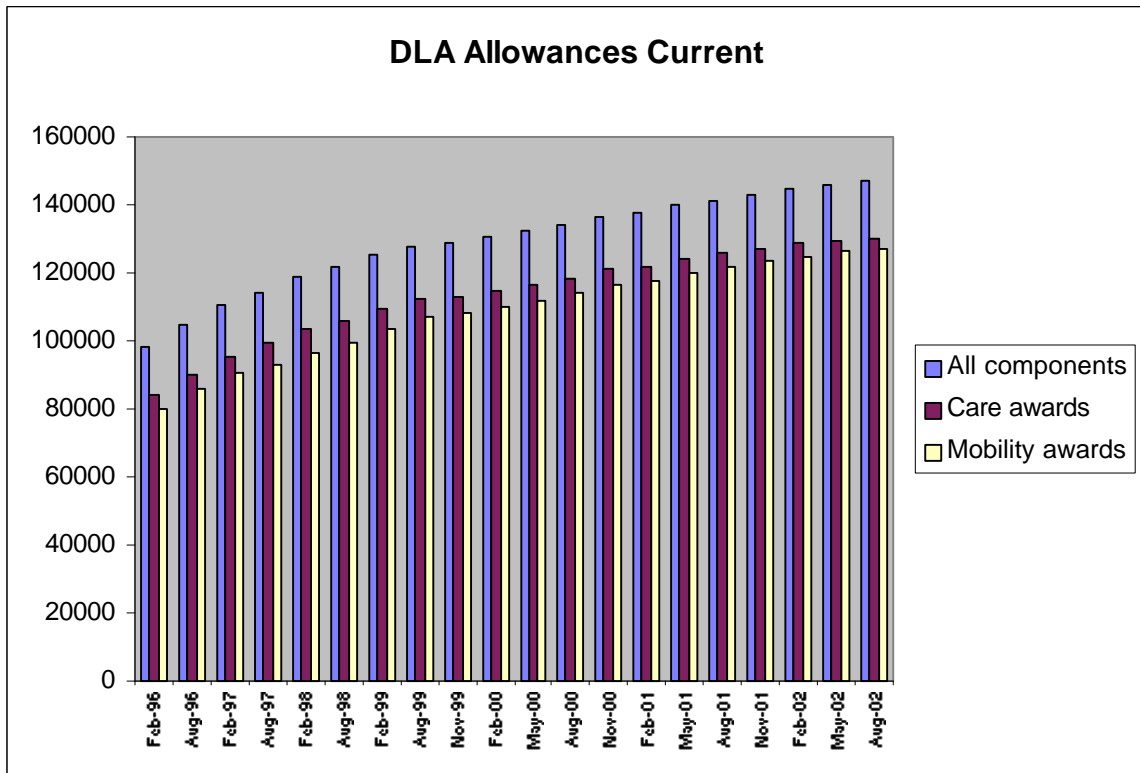


Chart 1.2: DLA allowances current by age and sex at 31 August 2002

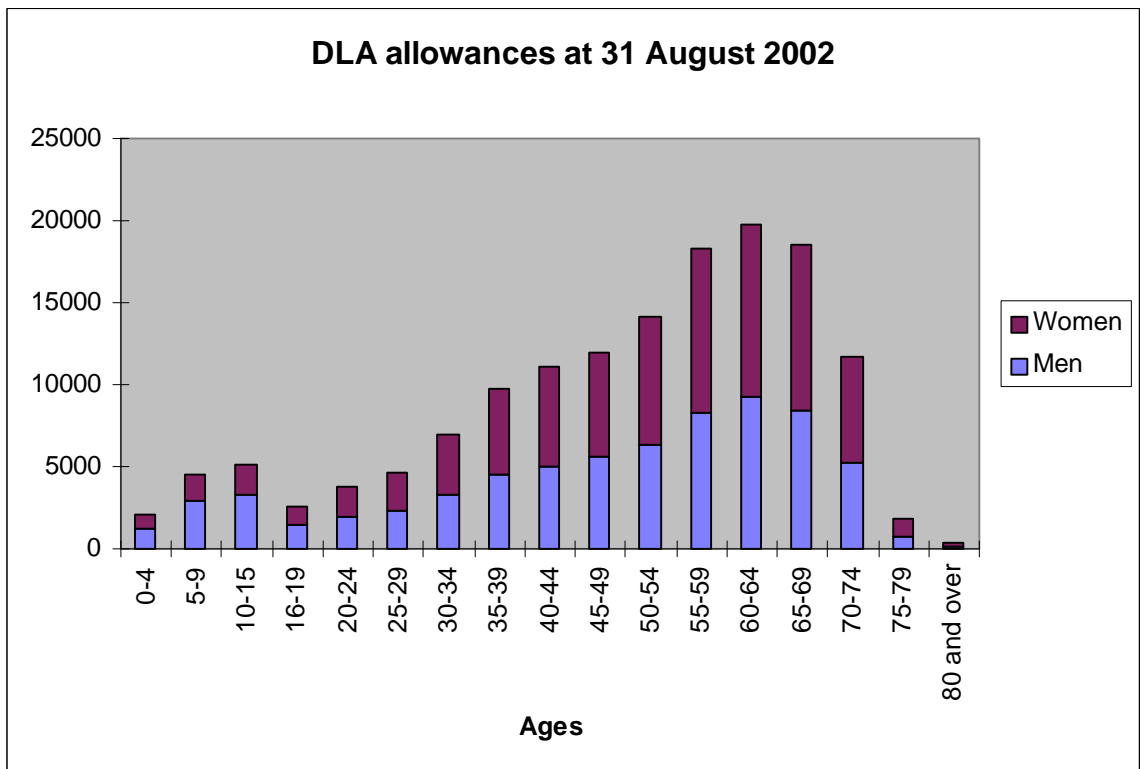


Table 1.7: Allowances current by main disabling condition at 31 August 2002¹

| | All Awards | Care component only | Mobility component only | Care and mobility component |
|-----------------------------|---------------|---------------------|-------------------------|-----------------------------|
| All conditions | 146979 | 19781 | 16686 | 110512 |
| Terminally ill | 1148 | 28 | 5 | 1115 |
| Arthritis | 27955 | 3674 | 2770 | 21511 |
| Back ailments | 11102 | 1479 | 1193 | 8430 |
| Muscles/joint/bone disease | 13852 | 3295 | 1530 | 9027 |
| Trauma to limbs | 742 | 253 | 90 | 399 |
| Blindness | 2083 | 82 | 153 | 1848 |
| Deafness | 1719 | 124 | 122 | 1473 |
| Heart disease | 11547 | 687 | 2443 | 8417 |
| Chest disease | 4196 | 216 | 845 | 3135 |
| Asthma | 4454 | 1307 | 778 | 2369 |
| Stroke-related | 3145 | 252 | 213 | 2680 |
| Peripheral vascular disease | 1108 | 30 | 333 | 745 |
| Epilepsy | 4437 | 447 | 98 | 3892 |
| Neurological disorder | 2771 | 358 | 146 | 2267 |
| Multiple sclerosis | 1543 | 40 | 81 | 1422 |
| Chronic fatigue | 1336 | 251 | 91 | 994 |
| Diabetes | 2273 | 539 | 106 | 1628 |
| Learning difficulties | 8089 | 622 | 1074 | 6393 |
| Other mental health causes | 28713 | 3264 | 2377 | 23072 |
| Alcohol abuse | 2244 | 503 | 63 | 1678 |
| Skin disease | 1036 | 706 | 36 | 294 |
| Malignant disease | 2015 | 380 | 75 | 1560 |
| Conversion* | 5456 | 271 | 1822 | 3363 |
| Other | 4015 | 973 | 242 | 2800 |

1. Where more than one disability is present only the main disabling condition is recorded.

* Disabling conditions were not recorded for existing cases when they were transferred to the computer system.



Table 1.8: Allowances current by District Council and Sex at 31 August 2002¹

| District Council | Male | | | | Female | | | |
|-------------------------|--------------|---------------------|-------------------------|-----------------------------|--------------|---------------------|-------------------------|-----------------------------|
| | All Awards | Care component only | Mobility component only | Care and mobility component | All Awards | Care component only | Mobility component only | Care and mobility component |
| Antrim | 1656 | 217 | 266 | 1173 | 1778 | 230 | 298 | 1250 |
| Ards | 2201 | 274 | 331 | 1596 | 2422 | 309 | 305 | 1808 |
| Armagh | 2079 | 273 | 298 | 1508 | 2287 | 279 | 275 | 1733 |
| Ballymena | 1550 | 220 | 264 | 1066 | 1641 | 227 | 228 | 1186 |
| Ballymoney | 922 | 131 | 129 | 662 | 1007 | 138 | 101 | 768 |
| Banbridge | 1546 | 167 | 227 | 1152 | 1589 | 178 | 186 | 1225 |
| Belfast | 15064 | 2200 | 1508 | 11356 | 17083 | 2190 | 1651 | 13242 |
| Carrickfergus | 1110 | 160 | 173 | 777 | 1315 | 194 | 198 | 923 |
| Castlereagh | 1986 | 261 | 286 | 1439 | 2309 | 287 | 304 | 1718 |
| Coleraine | 1492 | 245 | 199 | 1048 | 1613 | 272 | 215 | 1126 |
| Cookstown | 1680 | 239 | 153 | 1288 | 1777 | 248 | 159 | 1370 |
| Craigavon | 3667 | 499 | 393 | 2775 | 4219 | 529 | 447 | 3243 |
| Derry | 5530 | 827 | 583 | 4120 | 6116 | 808 | 588 | 4720 |
| Down | 2594 | 322 | 340 | 1932 | 2651 | 311 | 320 | 2020 |
| Dungannon | 2423 | 297 | 239 | 1887 | 2477 | 290 | 227 | 1960 |
| Fermanagh | 1929 | 293 | 240 | 1396 | 1921 | 262 | 194 | 1465 |
| Larne | 936 | 154 | 134 | 648 | 910 | 135 | 136 | 639 |
| Limavady | 1209 | 215 | 115 | 879 | 1339 | 235 | 108 | 996 |
| Lisburn | 3861 | 637 | 473 | 2751 | 4324 | 567 | 501 | 3256 |
| Magherafelt | 1268 | 227 | 133 | 908 | 1433 | 240 | 153 | 1040 |
| Moyle | 541 | 78 | 74 | 389 | 579 | 90 | 78 | 411 |
| Newry & Mourne | 4213 | 546 | 442 | 3225 | 4338 | 519 | 413 | 3406 |
| Newtownabbey | 2590 | 347 | 475 | 1768 | 2961 | 387 | 424 | 2150 |
| North Down | 1775 | 206 | 293 | 1276 | 2078 | 233 | 318 | 1527 |
| Omagh | 2558 | 342 | 227 | 1989 | 2666 | 303 | 196 | 2167 |
| Strabane | 2230 | 278 | 176 | 1776 | 2555 | 295 | 173 | 2087 |
| Missing Postcode | 1362 | 188 | 147 | 1027 | 1619 | 182 | 172 | 1265 |
| Northern Ireland | 69972 | 9843 | 8318 | 51811 | 77007 | 9938 | 8368 | 58701 |

1. The allocation of allowances to District Councils is based on the post code of the recipient. There is evidence that this process is not equally accurate for all District Councils.



Table 1.9: Allowances current by District Council and Population at 31 August 2002

| District Council | Total Population ¹ | All DLA Awards | | | | All DLA Awards as a % of Total Population ¹ | | | |
|-------------------------|-------------------------------|----------------------|---------------------|-------------------------|-----------------------------|--|---------------------|-------------------------|-----------------------------|
| | | All component Awards | Care component only | Mobility component only | Care and mobility component | All component Awards | Care component only | Mobility component only | Care and mobility component |
| Antrim | 48761 | 3434 | 447 | 564 | 2423 | 7.0% | 0.9% | 1.2% | 5.0% |
| Ards | 73435 | 4623 | 583 | 636 | 3404 | 6.3% | 0.8% | 0.9% | 4.6% |
| Armagh | 54462 | 4366 | 552 | 573 | 3241 | 8.0% | 1.0% | 1.1% | 6.0% |
| Ballymena | 58801 | 3191 | 447 | 492 | 2252 | 5.4% | 0.8% | 0.8% | 3.8% |
| Ballymoney | 27007 | 1929 | 269 | 230 | 1430 | 7.1% | 1.0% | 0.9% | 5.3% |
| Banbridge | 41549 | 3135 | 345 | 413 | 2377 | 7.5% | 0.8% | 1.0% | 5.7% |
| Belfast | 277170 | 32147 | 4390 | 3159 | 24598 | 11.6% | 1.6% | 1.1% | 8.9% |
| Carrickfergus | 37730 | 2425 | 354 | 371 | 1700 | 6.4% | 0.9% | 1.0% | 4.5% |
| Castlereagh | 66533 | 4295 | 548 | 590 | 3157 | 6.5% | 0.8% | 0.9% | 4.7% |
| Coleraine | 56408 | 3105 | 517 | 414 | 2174 | 5.5% | 0.9% | 0.7% | 3.9% |
| Cookstown | 32712 | 3457 | 487 | 312 | 2658 | 10.6% | 1.5% | 1.0% | 8.1% |
| Craigavon | 80931 | 7886 | 1028 | 840 | 6018 | 9.7% | 1.3% | 1.0% | 7.4% |
| Derry | 105335 | 11646 | 1635 | 1171 | 8840 | 11.1% | 1.6% | 1.1% | 8.4% |
| Down | 64147 | 5245 | 633 | 660 | 3952 | 8.2% | 1.0% | 1.0% | 6.2% |
| Dungannon | 47849 | 4900 | 587 | 466 | 3847 | 10.2% | 1.2% | 1.0% | 8.0% |
| Fermanagh | 57687 | 3850 | 555 | 434 | 2861 | 6.7% | 1.0% | 0.8% | 5.0% |
| Larne | 30811 | 1846 | 289 | 270 | 1287 | 6.0% | 0.9% | 0.9% | 4.2% |
| Limavady | 32639 | 2548 | 450 | 223 | 1875 | 7.8% | 1.4% | 0.7% | 5.7% |
| Lisburn | 108997 | 8185 | 1204 | 974 | 6007 | 7.5% | 1.1% | 0.9% | 5.5% |
| Magherafelt | 39891 | 2701 | 467 | 286 | 1948 | 6.8% | 1.2% | 0.7% | 4.9% |
| Moyle | 15961 | 1120 | 168 | 152 | 800 | 7.0% | 1.1% | 1.0% | 5.0% |
| Newry & Mourne | 87399 | 8551 | 1065 | 855 | 6631 | 9.8% | 1.2% | 1.0% | 7.6% |
| Newtownabbey | 80144 | 5551 | 734 | 899 | 3918 | 6.9% | 0.9% | 1.1% | 4.9% |
| North Down | 76578 | 3853 | 439 | 611 | 2803 | 5.0% | 0.6% | 0.8% | 3.7% |
| Omagh | 48109 | 5224 | 645 | 423 | 4156 | 10.9% | 1.3% | 0.9% | 8.6% |
| Strabane | 38273 | 4785 | 573 | 349 | 3863 | 12.5% | 1.5% | 0.9% | 10.1% |
| Missing Postcode | | 2981 | 370 | 319 | 2292 | | | | |
| Northern Ireland | 1689319 | 146979 | 19781 | 16686 | 110512 | 8.7% | 1.2% | 1.0% | 6.5% |

1. 2001 Mid Year Estimates, Northern Ireland Statistics and Research Agency



Table 1.10: Rates of DLA

| Date | <i>£ per week</i> | | | | |
|---------------|-------------------|-------------|------------|--------------------|------------|
| | Care component | | | Mobility component | |
| | Higher rate | Middle rate | Lower rate | Higher rate | Lower rate |
| 06 April 1992 | 43.35 | 28.95 | 11.55 | 30.30 | 11.55 |
| 10 April 1993 | 44.90 | 30.00 | 11.95 | 31.40 | 11.95 |
| 11 April 1994 | 45.70 | 30.55 | 12.15 | 31.95 | 12.15 |
| 10 April 1995 | 46.70 | 31.20 | 12.40 | 32.65 | 12.40 |
| 08 April 1996 | 48.50 | 32.40 | 12.90 | 33.90 | 12.90 |
| 07 April 1997 | 49.50 | 33.10 | 13.15 | 34.60 | 13.15 |
| 06 April 1998 | 51.30 | 34.30 | 13.60 | 35.85 | 13.60 |
| 05 April 1999 | 52.95 | 35.40 | 14.05 | 37.00 | 14.05 |
| 10 April 2000 | 53.55 | 35.80 | 14.20 | 37.40 | 14.20 |
| 09 April 2001 | 55.30 | 37.00 | 14.65 | 38.65 | 14.65 |
| 08 April 2002 | 56.25 | 37.65 | 14.90 | 39.30 | 14.90 |

Section 2: Attendance Allowance

| | Page |
|--|------|
| Table 2.1: AA allowances current | 17 |
| Table 2.2: Decisions on initial claims | 17 |
| Table 2.3: Decisions on review | 18 |
| Table 2.4: Awards by sex and age in year ending 31 August 2002 | 18 |
| Table 2.5: Awards by main disabling condition in year ending 31 August 2002 | 19 |
| Table 2.6: AA allowances current by age and sex at 31 August 2002 | 19 |
| Chart 2.1: AA allowances current..... | 20 |
| Chart 2.2: AA allowances current by age and sex at 31 August 2002 | 20 |
| Table 2.7: Allowances current by main disabling condition at 31 August 2002 | 21 |
| Table 2.8: Allowances current by District Council ¹ at 31 August 2002..... | 22 |
| Table 2.9: Allowances current by District Council and Population at 31 August 2002..... | 23 |
| Table 2.10: Rates of AA..... | 24 |



Introduction

Attendance allowance (AA) is a benefit for people who are so severely disabled, physically or mentally, that they need someone with them to help with personal care. They could need either frequent help coping with their bodily functions or constant care to stop them hurting themselves or others. This could be either during the day or night.

A claimant who needs help both during the day and at night can get the higher rate of AA. A claimant who needs help either during the day or at night gets the lower rate. Since October 1990, people who have a terminal illness, and are therefore not likely to live for more than 6 months, have also been invited to claim. Since April 1992, people who were disabled before the age of 65 receive Disability Living Allowance instead of AA.



Table 2.1: AA allowances current

| Year | All awards | Higher rate | Lower rate |
|------------------|------------|-------------|------------|
| 31 August 1996 | 61389 | 40120 | 21269 |
| 30 November 1996 | 62697 | 41350 | 21347 |
| 28 February 1997 | 62607 | 41542 | 21065 |
| 31 May 1997 | 63472 | 42491 | 20981 |
| 31 August 1997 | 64282 | 43350 | 20932 |
| 30 November 1997 | 64671 | 43880 | 20791 |
| 28 February 1998 | 64517 | 44010 | 20507 |
| 31 May 1998 | 64422 | 44231 | 20191 |
| 31 August 1998 | 64367 | 44208 | 20159 |
| 30 November 1998 | 64747 | 44514 | 20233 |
| 28 February 1999 | 64664 | 44473 | 20191 |
| 31 May 1999 | 64941 | 45044 | 19897 |
| 31 August 1999 | 64770 | 45083 | 19687 |
| 30 November 1999 | 65169 | 45576 | 19593 |
| 29 February 2000 | 64850 | 45594 | 19256 |
| 31 May 2000 | 65217 | 46153 | 19064 |
| 31 August 2000 | 65221 | 46447 | 18774 |
| 30 November 2000 | 66265 | 47434 | 18831 |
| 28 February 2001 | 65864 | 47235 | 18629 |
| 31 May 2001 | 65764 | 47368 | 18396 |
| 31 August 2001 | 65730 | 47447 | 18283 |
| 30 November 2001 | 66286 | 48120 | 18166 |
| 28 February 2002 | 65954 | 47943 | 18011 |
| 31 May 2002 | 65657 | 47843 | 17814 |
| 31 August 2002 | 65422 | 47640 | 17782 |

Table 2.2: Decisions on initial claims¹

| Year | 1.10.95 to | | | | 1.04.02 to | | | |
|------------------------|-------------|--------------|--------------|--------------|----------------------|----------------------|----------------------|-------------|
| | 31.3.96 | 1996/97 | 1997/98 | 1998/99 | 1999/00 ² | 2000/01 ³ | 2001/02 ⁴ | 31.08.02 |
| Initial claims | 6246 | 14257 | 12702 | 11365 | 9455 | 10275 | 10881 | 3445 |
| Initial claims decided | | | | | | | | |
| All decisions | 6196 | 14131 | 12569 | 11282 | 9214 | 9739 | 10173 | 3239 |
| First awards: | | | | | | | | |
| Higher rate | 3056 | 7143 | 6652 | 5735 | 5390 | 5828 | 5756 | 1766 |
| Lower rate | 1525 | 3709 | 2936 | 3133 | 2288 | 2402 | 2436 | 823 |
| Rejections | 1615 | 3279 | 2981 | 2414 | 1536 | 1509 | 1981 | 650 |

1. Figures exclude first awards made as a result of review or appeal decisions.

2. Excludes November 1999 and January 2000 data, which are not available

3. Excludes March 2001 data, which are not available

4. Excludes September 2001 data, which are not available



Table 2.3: Decisions on review

| Year | 1.10.95 to | | | | | | | 1.04.02 to |
|----------------------|-------------|-------------|-------------|-------------|----------------------|-----------------------|-----------------------|-----------------------|
| | 31.3.96 | 1996/97 | 1997/98 | 1998/99 | 1999/00 ¹ | 2000/01 ²³ | 2001/02 ²⁴ | 31.08.02 ² |
| Requests for review | 1189 | 3963 | 3455 | 2737 | 1908 | 2357 | 2744 | 793 |
| Decisions | | | | | | | | |
| All decisions | 1157 | 3814 | 3358 | 2677 | 1847 | 2333 | 2714 | 788 |
| Review allowed | 222 | 908 | 839 | 378 | 154 | 132 | 164 | 57 |
| Award increased | 522 | 1717 | 1676 | 1646 | 1268 | 1644 | 1651 | 447 |
| Other decisions | 413 | 1189 | 843 | 653 | 425 | 557 | 899 | 284 |

1. Excludes November 1999 and January 2000 data, which are not available

2. Includes in and out-of-time reviews, reconsiderations and supersessions

3. Excludes March 2001 data, which are not available

4. Excludes September 2001 data, which are not available

Table 2.4: Awards by sex and age in year ending 31 August 2002¹

| | Total | Men | Women |
|-----------------|-------------|-------------|-------------|
| All ages | 8547 | 3447 | 5100 |
| 65-69 | 1285 | 612 | 673 |
| 70-74 | 1898 | 785 | 1113 |
| 75-79 | 2289 | 937 | 1352 |
| 80-84 | 1819 | 711 | 1108 |
| 85-89 | 890 | 306 | 584 |
| 90 and over | 366 | 96 | 270 |

1. Figures relate to first awards made as a result of initial claims, reviews or appeals.

Table 2.5: Awards by main disabling condition in year ending 31 August 2002^{1 2}

| | All Awards | Higher rate | Lower rate |
|-----------------------------|-------------|-------------|-------------|
| All conditions | 8547 | 6182 | 2345 |
| Terminally ill | 532 | 532 | 0 |
| Arthritis | 2637 | 1869 | 766 |
| Back ailments | 139 | 97 | 42 |
| Muscles/joint/bone disease | 116 | 83 | 32 |
| Trauma to limbs | 64 | 42 | 22 |
| Blindness | 151 | 74 | 77 |
| Heart disease | 1010 | 703 | 304 |
| Chest disease | 376 | 277 | 96 |
| Asthma | 73 | 54 | 19 |
| Stroke-related | 422 | 315 | 106 |
| Peripheral vascular disease | 48 | 36 | 12 |
| Frailty | 1340 | 919 | 417 |
| Parkinsons disease | 113 | 92 | 21 |
| Diabetes | 206 | 135 | 70 |
| Other mental health causes | 876 | 618 | 256 |
| Malignant disease | 209 | 161 | 47 |
| Other | 235 | 175 | 58 |

1. Figures relate to first awards made as a result of initial claims, reviews and appeals.

2. Where more than one disability is present only the main disabling condition is recorded.

Table 2.6: AA allowances current by age and sex at 31 August 2002

| | Total | Men | Women |
|-----------------|---------------|---------------|---------------|
| All ages | 65,422 | 21,232 | 44,190 |
| 65-69 | 3084 | 1338 | 1746 |
| 70-74 | 10429 | 3829 | 6600 |
| 75-79 | 19900 | 6937 | 12963 |
| 80-84 | 17351 | 5455 | 11896 |
| 85-89 | 10040 | 2681 | 7359 |
| 90 and over | 4618 | 992 | 3626 |



Chart 2.1: AA allowances current

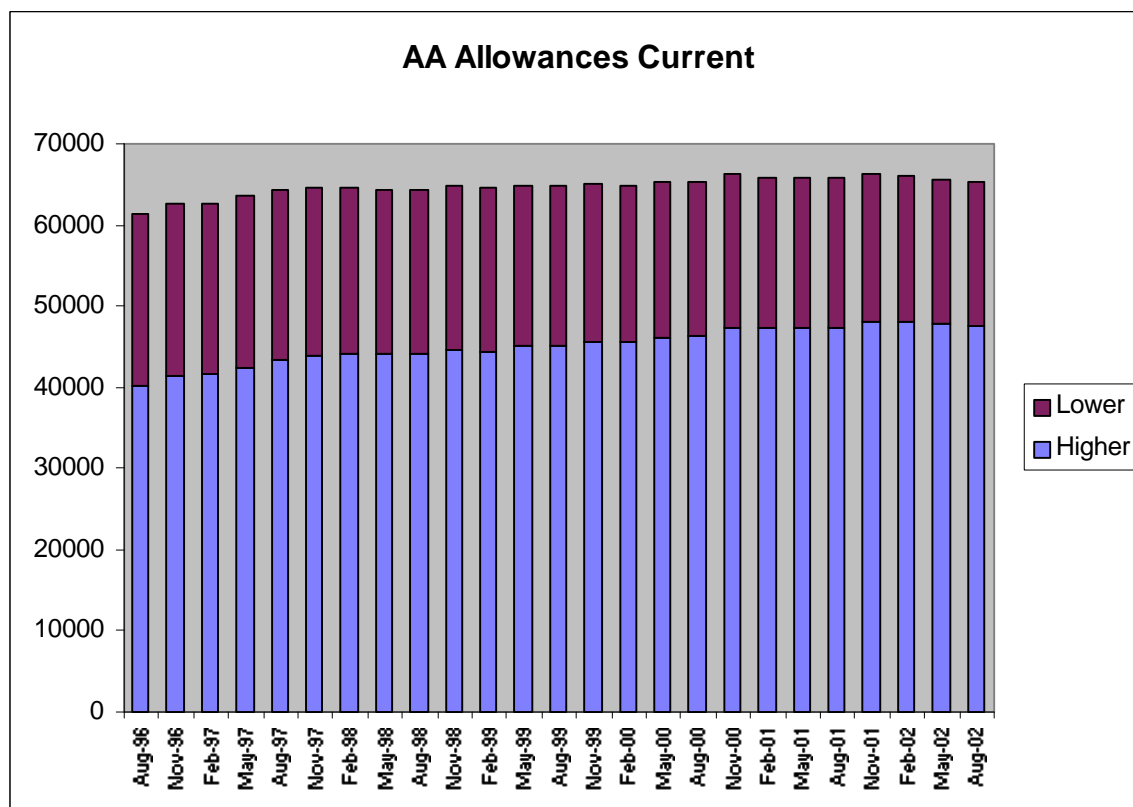


Chart 2.2: AA allowances current by age and sex at 31 August 2002

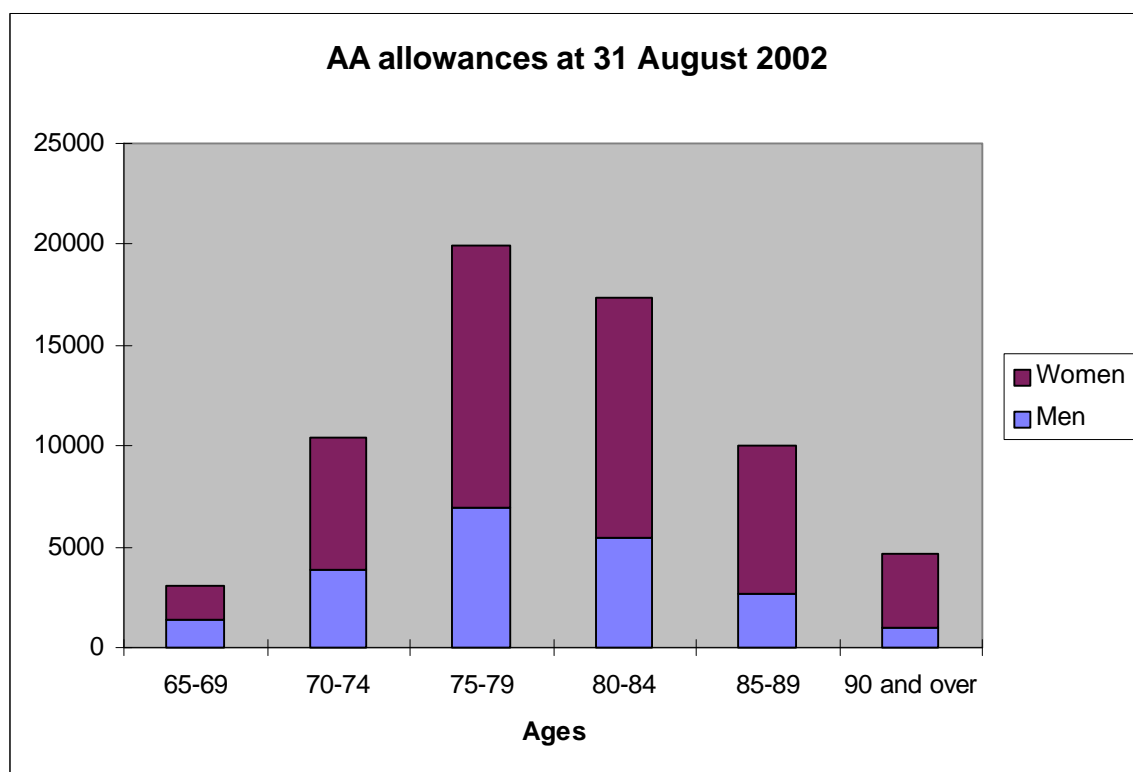


Table 2.7: Allowances current by main disabling condition at 31 August 2002¹

| | All Awards | Higher rate | Lower rate |
|-----------------------------|--------------|--------------|--------------|
| All conditions | 65422 | 47640 | 17782 |
| Terminally ill | 629 | 629 | 0 |
| Arthritis | 17781 | 12916 | 4865 |
| Back ailments | 1135 | 802 | 333 |
| Muscles/joint/bone disease | 830 | 598 | 232 |
| Trauma to limbs | 342 | 242 | 100 |
| Blindness | 1094 | 527 | 567 |
| Heart disease | 6197 | 4457 | 1740 |
| Chest disease | 2238 | 1668 | 570 |
| Asthma | 573 | 444 | 129 |
| Stroke-related | 2281 | 1775 | 506 |
| Peripheral vascular disease | 371 | 263 | 108 |
| Frailty | 5620 | 4000 | 1620 |
| Neurological disorder | 709 | 501 | 208 |
| Parkinsons disease | 553 | 452 | 101 |
| Diabetes | 947 | 658 | 289 |
| Other mental health causes | 2940 | 2119 | 821 |
| Malignant disease | 831 | 665 | 166 |
| Other | 1092 | 779 | 313 |
| Conversion* | 19259 | 14145 | 5114 |

1. Where more than one disability is present only the main disabling condition is recorded.

* Disabling conditions were not recorded for existing cases when they were transferred to the computer system.

Table 2.8: Allowances current by District Council¹ at 31 August 2002

| District Council | All Awards | | | Male | | | Female | | |
|-------------------------|--------------|--------------|--------------|--------------|--------------|-------------|--------------|--------------|--------------|
| | All Awards | Higher Rate | Lower Rate | All Awards | Higher Rate | Lower Rate | All Awards | Higher Rate | Lower Rate |
| Antrim | 1223 | 850 | 373 | 388 | 291 | 97 | 835 | 559 | 276 |
| Ards | 2738 | 1839 | 899 | 869 | 595 | 274 | 1869 | 1244 | 625 |
| Armagh | 2159 | 1642 | 517 | 731 | 573 | 158 | 1428 | 1069 | 359 |
| Ballymena | 1997 | 1420 | 577 | 626 | 468 | 158 | 1371 | 952 | 419 |
| Ballymoney | 1013 | 722 | 291 | 346 | 256 | 90 | 667 | 466 | 201 |
| Banbridge | 1577 | 1139 | 438 | 514 | 385 | 129 | 1063 | 754 | 309 |
| Belfast | 13005 | 9195 | 3810 | 3850 | 2809 | 1041 | 9155 | 6386 | 2769 |
| Carrickfergus | 1196 | 787 | 409 | 381 | 274 | 107 | 815 | 513 | 302 |
| Castlereagh | 2535 | 1760 | 775 | 806 | 592 | 214 | 1729 | 1168 | 561 |
| Coleraine | 2072 | 1484 | 588 | 651 | 482 | 169 | 1421 | 1002 | 419 |
| Cookstown | 1424 | 1153 | 271 | 510 | 425 | 85 | 914 | 728 | 186 |
| Craigavon | 3048 | 2192 | 856 | 1008 | 753 | 255 | 2040 | 1439 | 601 |
| Derry | 2962 | 2169 | 793 | 958 | 728 | 230 | 2004 | 1441 | 563 |
| Down | 2292 | 1693 | 599 | 719 | 534 | 185 | 1573 | 1159 | 414 |
| Dungannon | 2141 | 1734 | 407 | 755 | 613 | 142 | 1386 | 1121 | 265 |
| Fermanagh | 2544 | 1965 | 579 | 917 | 728 | 189 | 1627 | 1237 | 390 |
| Larne | 1068 | 719 | 349 | 349 | 257 | 92 | 719 | 462 | 257 |
| Limavady | 1067 | 850 | 217 | 368 | 295 | 73 | 699 | 555 | 144 |
| Lisburn | 3304 | 2278 | 1026 | 1022 | 747 | 275 | 2282 | 1531 | 751 |
| Magherafelt | 1621 | 1282 | 339 | 586 | 467 | 119 | 1035 | 815 | 220 |
| Moyle | 666 | 479 | 187 | 219 | 162 | 57 | 447 | 317 | 130 |
| Newry & Mourne | 3648 | 2895 | 753 | 1273 | 1036 | 237 | 2375 | 1859 | 516 |
| Newtownabbey | 2746 | 1815 | 931 | 887 | 611 | 276 | 1859 | 1204 | 655 |
| North Down | 2983 | 2105 | 878 | 930 | 699 | 231 | 2053 | 1406 | 647 |
| Omagh | 2037 | 1683 | 354 | 744 | 632 | 112 | 1293 | 1051 | 242 |
| Strabane | 1572 | 1193 | 379 | 576 | 436 | 140 | 996 | 757 | 239 |
| Missing Postcode | 784 | 597 | 187 | 249 | 186 | 63 | 535 | 411 | 124 |
| Northern Ireland | 65422 | 47640 | 17782 | 21232 | 16034 | 5198 | 44190 | 31606 | 12584 |

1. The allocation of allowances to District Councils is based on the post code of the recipient. There is evidence that this process is not equally accurate for all District Councils.

Table 2.9: Allowances current by District Council and Population¹ at 31 August 2002

| District Council | Population Aged 65+ ¹ | All AA Awards | | | All AA Awards as a % of Population Aged 65+ ¹ | | |
|-------------------------|----------------------------------|---------------|--------------|--------------|--|--------------|-------------|
| | | All Awards | Higher Rate | Lower Rate | All Awards | Higher Rate | Lower Rate |
| Antrim | 5150 | 1223 | 850 | 373 | 23.7% | 16.5% | 7.2% |
| Ards | 10342 | 2738 | 1839 | 899 | 26.5% | 17.8% | 8.7% |
| Armagh | 6659 | 2159 | 1642 | 517 | 32.4% | 24.7% | 7.8% |
| Ballymena | 8505 | 1997 | 1420 | 577 | 23.5% | 16.7% | 6.8% |
| Ballymoney | 3647 | 1013 | 722 | 291 | 27.8% | 19.8% | 8.0% |
| Banbridge | 5211 | 1577 | 1139 | 438 | 30.3% | 21.9% | 8.4% |
| Belfast | 42374 | 13005 | 9195 | 3810 | 30.7% | 21.7% | 9.0% |
| Carrickfergus | 5013 | 1196 | 787 | 409 | 23.9% | 15.7% | 8.2% |
| Castlereagh | 10976 | 2535 | 1760 | 775 | 23.1% | 16.0% | 7.1% |
| Coleraine | 8007 | 2072 | 1484 | 588 | 25.9% | 18.5% | 7.3% |
| Cookstown | 3765 | 1424 | 1153 | 271 | 37.8% | 30.6% | 7.2% |
| Craigavon | 10229 | 3048 | 2192 | 856 | 29.8% | 21.4% | 8.4% |
| Derry | 10336 | 2962 | 2169 | 793 | 28.7% | 21.0% | 7.7% |
| Down | 8153 | 2292 | 1693 | 599 | 28.1% | 20.8% | 7.3% |
| Dungannon | 5988 | 2141 | 1734 | 407 | 35.8% | 29.0% | 6.8% |
| Fermanagh | 7954 | 2544 | 1965 | 579 | 32.0% | 24.7% | 7.3% |
| Larne | 4566 | 1068 | 719 | 349 | 23.4% | 15.7% | 7.6% |
| Limavady | 3183 | 1067 | 850 | 217 | 33.5% | 26.7% | 6.8% |
| Lisburn | 12941 | 3304 | 2278 | 1026 | 25.5% | 17.6% | 7.9% |
| Magherafelt | 4573 | 1621 | 1282 | 339 | 35.4% | 28.0% | 7.4% |
| Moyle | 2312 | 666 | 479 | 187 | 28.8% | 20.7% | 8.1% |
| Newry & Mourne | 10204 | 3648 | 2895 | 753 | 35.8% | 28.4% | 7.4% |
| Newtownabbey | 11349 | 2746 | 1815 | 931 | 24.2% | 16.0% | 8.2% |
| North Down | 12547 | 2983 | 2105 | 878 | 23.8% | 16.8% | 7.0% |
| Omagh | 5537 | 2037 | 1683 | 354 | 36.8% | 30.4% | 6.4% |
| Strabane | 4445 | 1572 | 1193 | 379 | 35.4% | 26.8% | 8.5% |
| Missing Postcode | | 784 | 597 | 187 | | | |
| Northern Ireland | 223966 | 65422 | 47640 | 17782 | 29.2% | 21.3% | 7.9% |

1. 2001 Mid Year Estimates, Northern Ireland Statistics and Research Agency



Table 2.10: Rates of AA

| Date | <i>£ per week</i> | |
|---------------|-------------------|------------|
| | Higher rate | Lower rate |
| 06 April 1992 | 43.35 | 28.95 |
| 10 April 1993 | 44.90 | 30.00 |
| 11 April 1994 | 45.70 | 30.55 |
| 10 April 1995 | 46.70 | 31.20 |
| 08 April 1996 | 48.50 | 32.40 |
| 07 April 1997 | 49.50 | 33.10 |
| 06 April 1998 | 51.30 | 34.30 |
| 05 April 1999 | 52.95 | 35.40 |
| 10 April 2000 | 53.55 | 35.80 |
| 09 April 2001 | 55.30 | 37.00 |
| 08 April 2002 | 56.25 | 37.65 |

Section 3: Invalid Care Allowance

| | Page |
|--|------|
| Table 3.1: Allowances current at end of year by sex..... | 27 |
| Table 3.2: Claims and awards..... | 27 |
| Table 3.3: Allowances current by age and sex at 31 August 2002 | 28 |
| Chart 3.1: ICA allowances over time | 29 |
| Chart 3.2: ICA allowances by age and sex at 31 August 2002 | 29 |
| Table 3.4: Rates of Invalid Care Allowance | 30 |



Introduction

Invalid Care Allowance (ICA) is a non-contributory benefit for men and women:

- who look after a severely disabled person for at least 35 hours a week
- who are eligible before their 65th birthday
- who are not gainfully employed (i.e. not earning more than £72 per week after certain deductions) and
- who are not in full-time education for 21 hours or more per week

The severely disabled person must be getting either

- the higher or middle rate of DLA care component, or
- AA, or
- a Constant Attendance Allowance at the maximum rate under the War Pensions or Industrial Injuries Scheme.

Someone who gets ICA can have extra money added on for their dependants.



Table 3.1: Allowances current at end of year by sex

| Year ending | All persons | Men | Women |
|---------------------|-------------|--------|--------|
| Nov-92 | 10,927 | 1,846 | 9,081 |
| Nov-93 | 15,921 | 3,009 | 12,912 |
| Nov-94 | 20,900 | 4,240 | 16,660 |
| Nov-95 | 28,139 | 6,318 | 21,821 |
| Nov-96 | 33,294 | 7,979 | 25,315 |
| Dec-97 | 30,003 | 8,307 | 21,696 |
| Dec-98 ¹ | 31,676 | 9,003 | 22,673 |
| Sep-99 ² | 33,673 | 9,857 | 23,816 |
| Mar-01 | 33,771 | 10,469 | 23,302 |
| Nov-01 | 34,570 | 10,832 | 23,738 |
| Feb-02 | 34,893 | 11,006 | 23,887 |
| May-02 | 35,151 | 11,113 | 24,038 |
| Aug-02 | 35,414 | 11,224 | 24,190 |

1. The December 1998 figures onwards were obtained from the new ICA computer system which was introduced in May 1997. These figures are therefore not directly comparable to those for previous years.

2. 9 months ending September 1999

Table 3.2: Claims and awards

| Year ending | Claims received | Awards | Disallowances |
|---------------------|-----------------|--------|---------------|
| Dec-97 | 11,719 | 7,738 | 1,426 |
| Dec-98 | 9,692 | 7,714 | 1,763 |
| Sep-99 ¹ | 6,698 | 5,407 | 1,291 |
| Dec-00 ² | 8,176 | | |
| Dec-01 | 10,231 | 8,727 | 1,504 |

1. 9 months ending September 1999. Final quarterly data not available

2. Awards and disallowances statistics not available



Table 3.3: Allowances current by age and sex at 31 August 2002

| | All persons | Men | Women |
|-----------------|----------------|---------------|---------------|
| All Ages | 35,414 | 11,224 | 24,190 |
| Under 20 | 368 | 163 | 205 |
| 20-24 | 1216 | 437 | 779 |
| 25-29 | 2028 | 608 | 1,420 |
| 30-34 | 3889 | 1,021 | 2,868 |
| 35-39 | 5145 | 1,540 | 3,605 |
| 40-44 | 5048 | 1,552 | 3,496 |
| 45-49 | 4342 | 1415 | 2,927 |
| 50-54 | 4282 | 1,311 | 2,971 |
| 55-59 | 4400 | 1383 | 3,017 |
| 60-64 | 3090 | 1189 | 1901 |
| 65+ | 1606 | 605 | 1001 |

Chart 3.1: ICA allowances over time

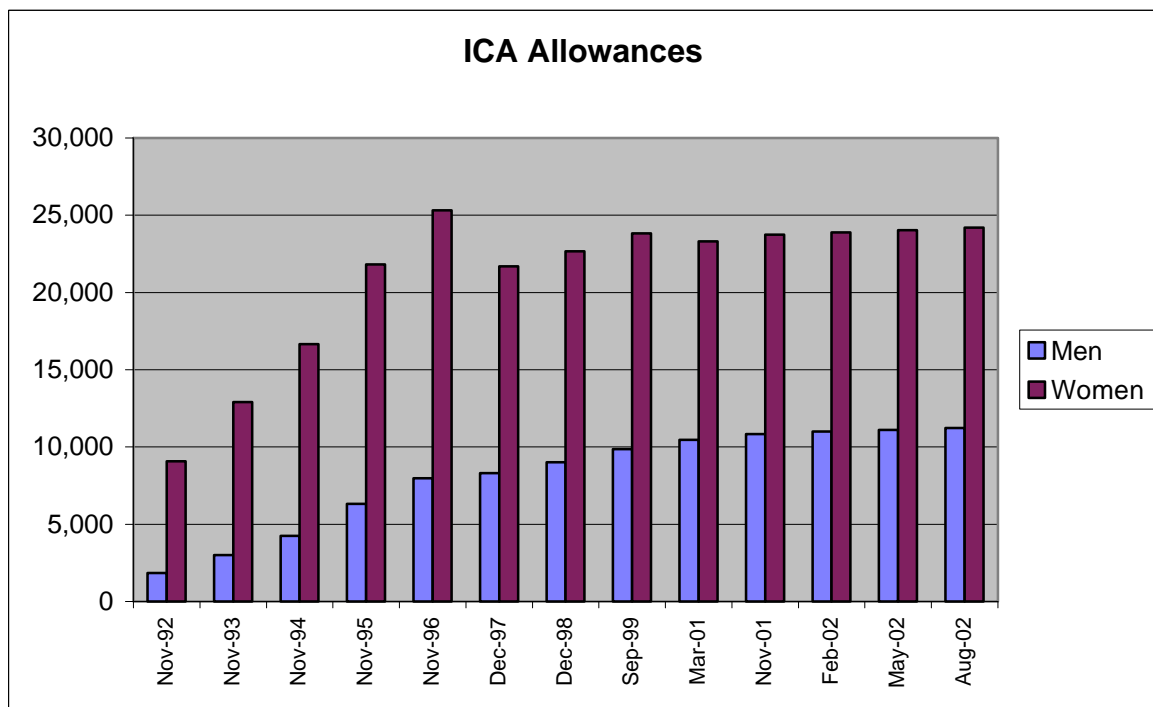


Chart 3.2: ICA allowances by age and sex at 31 August 2002

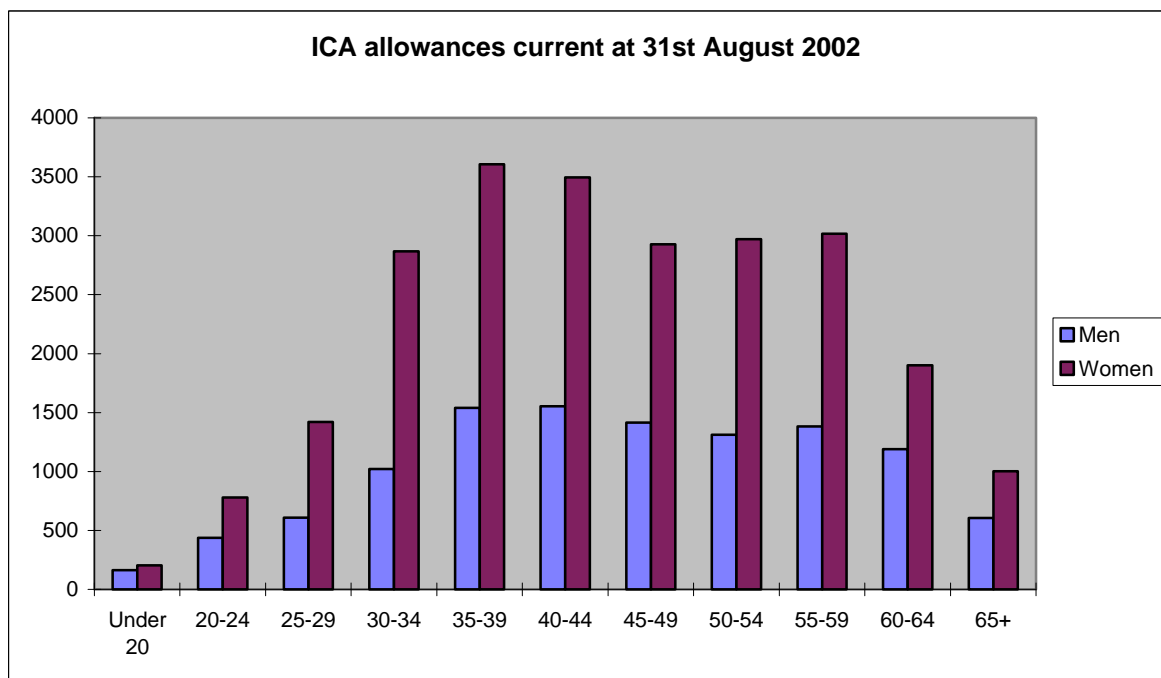


Table 3.4: Rates of Invalid Care Allowance

| | £ per week | | | |
|---------------|------------|-------|---------------------|----------------|
| | Standard | Adult | Rate for dependants | |
| | | | First child | Other children |
| 06 April 1992 | 32.25 | 19.45 | 10.85 | 10.85 |
| 12 April 1993 | 33.70 | 20.15 | 9.80 | 9.80 |
| 11 April 1994 | 34.50 | 20.65 | 9.80 | 11.00 |
| 10 April 1995 | 35.25 | 21.10 | 9.85 | 11.05 |
| 08 April 1996 | 36.60 | 21.90 | 9.90 | 11.15 |
| 07 April 1997 | 37.35 | 22.35 | 9.90 | 11.20 |
| 06 April 1998 | 38.70 | 23.15 | 9.90 | 11.30 |
| 05 April 1999 | 39.95 | 23.90 | 9.90 | 11.35 |
| 10 April 2000 | 40.40 | 24.15 | 9.85 | 11.35 |
| 09 April 2001 | 41.75 | 24.95 | 9.70 | 11.35 |
| 08 April 2002 | 42.45 | 25.35 | 9.65 | 11.35 |



Annex

1. The following tables for DLA, while not included in this publication, are also available on request.
 - A. Awards of care by medical code and rate.
 - B. Awards of care by sex, age and rate.
 - C. Awards of mobility by medical code and rate.
 - D. Awards of mobility by sex, age and rate.
 - E. First awards by medical code.
 - F. Decision on length of awards for claims awarded.
 - G. Decision on length of awards for claims awarded by rate.
 - H. Terminally ill beneficiaries.
 - I. Terminally ill durations on benefit for awards terminating.
 - J. Quarterly payload by care and mobility rates
 - K. Payload by disability by rate of care.
 - L. Payload by disability by rate of mobility.
 - M. Payload by age and sex.
 - N. Care and mobility payload by age.



ISSN 1475-5491