

**Department for Social Development**

**Northern Ireland  
Incapacity Benefit and  
Severe Disablement Allowance  
Summary Statistics**

**DSD**

Department for  
Social Development

**May 2001**



**A National Statistics Publication**



**Department for Social Development**

**Northern Ireland  
Incapacity Benefit and  
Severe Disablement Allowance  
Summary Statistics**

**May 2001**

## **Published BY**

Statistics & Research Branch  
Department for Social Development  
Room 3 Block 4,  
The Village, Stormont,  
Belfast, BT4 3SJ

Telephone: 02890 5/22803  
GTN (440) 22803  
Fax: 02890 5/22763  
e-mail: [srb@dndi.gov.uk](mailto:srb@dndi.gov.uk)

ISBN 1-904105-01-7

Further Statistics for Northern Ireland relating to Social Security Benefits can be obtained by visiting our website;

<http://www.dndi.gov.uk/srb/index.html>

Statistics relating to Social Security Benefits in Great Britain can be obtained by visiting the following website;

<http://www.dss.gov.uk/asd/online.html>

<b>Contents</b>		<b>Page</b>
Introduction		2
Glossary of terms and conventions		3
Summary		4
Table A1	IB claimants by type of IB (Numbers)	5
Table A2	IB claimants by type of IB (Percentages)	6
Table A3	IB recipients by whether over pension age, rate and average amount	7
Table A4	IB recipients by whether over pension age, and rate of benefit	8
Table A5	IB spells terminating by reason	9
Table A6	IB recipients by dependency	10
Table A7	IB recipients by reason exempt from PCA	11
Table A8	IB spells commencing and terminating in the quarter	12
Table B1	IB claimants and recipients by age, sex and type of IB	13
Table B2	IB spells terminating in period by reason and type of IB	15
Table B3	IB claimants by district council and type of IB	16
Table B4	IB recipients by sex, dependency and type of IB	18
Table B5	IB recipients by amount in payment and type of IB	21
Table B6	IB recipients by reason exempt from PCA and type of IB	22
Table B7	IB claimants by diagnosis group	23
Table B8	IB claimants by age, sex and duration of benefit	24
Table B9	IB claimants and recipients by GOR	25
Table C1	SDA claimants and recipients by start of spell	27
Table C2	SDA claimants and recipients by start of spell	28
Table C3	SDA claimants and recipients by age and sex	29
Table C4	SDA spells terminating in period by reason	30
Table C5	SDA claimants by district council	31
Table C6	SDA recipients by sex and dependency	32
Table C7	SDA recipients by amount in payment	32
Table C8	SDA claimants by reason exempt from PCA	33
Table C9	SDA claimants by diagnosis group	34
Table C10	SDA claimants by age, sex and duration of benefit	35
Table C11	SDA claimants and recipients by GOR	36

## Introduction

Incapacity benefit replaced Sickness Benefit and Invalidity Benefit from 13 April 1995. It is paid to people who are assessed as being incapable of work and who meet the same contribution conditions as for Sickness Benefit.

There are three rates of Incapacity Benefit. There are two short-term rates: the lower rate (IBST(L)) is paid for the first 28 weeks of sickness and the higher rate (IBST(H)) for weeks 29 to 52. The long-term rate (IBLT) applies to people who have been sick for more than a year. The higher short-term rate and the long-term rate are treated as taxable income.

Increases are paid for a dependant adult who is caring for a child or where the spouse is aged 60 or over. Increases for children are paid with the short-term higher rate and with the long-term rate. An age addition is paid with the long-term rate at one of two rates depending on the age when incapacity began.

For the first 28 weeks of incapacity, people previously in work will be assessed on the 'own occupation' test - the claimant's ability to do their own job. Otherwise incapacity will be based on the 'personal capability assessment' (formerly 'all work' test) which assesses the ability to carry out a range of work-related activities. The test applies after 28 weeks of incapacity or from the start of the claim for people who did not previously have a job.

Certain people are exempt from the personal capability assessment. This includes, those in receipt of Disability Living Allowance care at a higher rate, those registered blind, or those suffering from a severe illness for example: tetraplegia, persistent vegetative state, dementia.

There were transitional provisions for people who were on Sickness or Invalidity Benefit on 12 April 1995. They were automatically transferred to Incapacity Benefit payable on the same basis as before. Former Invalidity Benefit recipients continue to get additional pension entitlement, but frozen at 1994 rates. If they were over state pension age on 12 April 1995 they may get Incapacity Benefit for up to 5 years beyond pension age. Benefit received by former Invalidity Benefit claimants is not subject to tax.

The statistics in this publication are based on 100% of cases from the Incapacity Benefit Computer System (OPSTRAT). Clerical cases are not included. (These on average number between 2,300 and 2,500 cases). The publication provides numbers of Incapacity Benefit and Severe Disablement Allowance claimants for each quarter from February 1996 through to May 2001, with a more in-depth analysis for May 2001.



## Glossary of terms and conventions

### Glossary of terms

#### *Claimant*

“Claimants” include people who are in receipt of benefit and also those who have applied for the benefit and continue to submit medical evidence, but who either are not entitled because of failing the contribution conditions (in the case of IB), or have their benefit extinguished for reasons such as an overlap with another benefit, or because of hospitalisation (in the case of both IB and SDA).

#### *Recipients*

“Recipients” are people who are actually in receipt of payment.

### Conventions

..	Not available
-	Nil or Negligible

### Abbreviations

**IB** – Incapacity Benefit

**SDA** – Severe Disablement Allowance

**Own occ. Test** – ‘Own Occupation’ test (See Introduction)

**PCA** – Personal Capability Assessment (See Introduction)

**IBST (L)** – Incapacity benefit short-term, lower rate (See Introduction)

**IBST (H)** - Incapacity benefit short-term, higher rate (See Introduction)

**IBLT** - Incapacity benefit long-term (See Introduction)

**Ex-IVB** – Ex-Invalidity Benefit protected cases (See Introduction)

**BAMS** - Benefits Agency Medical Service



### **Incapacity Benefit and Severe Disablement Allowance - May 2001**

At the end of May 2001 there were 100,989 **IB claimants**, up 1,949 (2%) on the previous year. Of these, 70,344 were in receipt of the benefit, a 0.3% increase on the previous twelve months. The corresponding figure for Great Britain as a whole was up (1%) on the previous year.

Numbers claiming the different rates of the benefit were as follows (see table A1):

- Numbers on **short term lower rate** in the year fell to 4,854.
- Numbers on **short term higher rate** in the year fell to 4,888.
- Numbers on **long term rate** in the year rose to 61,278.

The proportions claiming the different rates of the benefit for Great Britain as a whole, mirrored that of Northern Ireland.

Total **terminations** averaged 2,217 per month during the latest quarter (see table A5); 40% of these were due to the 'Personal Capability Assessment' (formerly 'all work test') <sup>(1)</sup>. This figure is higher than that of Great Britain, which has a proportion of terminations of 20% due to the Personal Capability Assessment.

There has been a 70% decline in the number of recipients with Adult dependants only since February 1996 (see table A6). To qualify for an increase in benefit, an adult dependant must now be caring for a child or have a wife or husband aged 60 or over.

At the end of May 2001 there were 20,087 IB recipients exempt from the Personal Capability Assessment, up (1%) on the previous year.

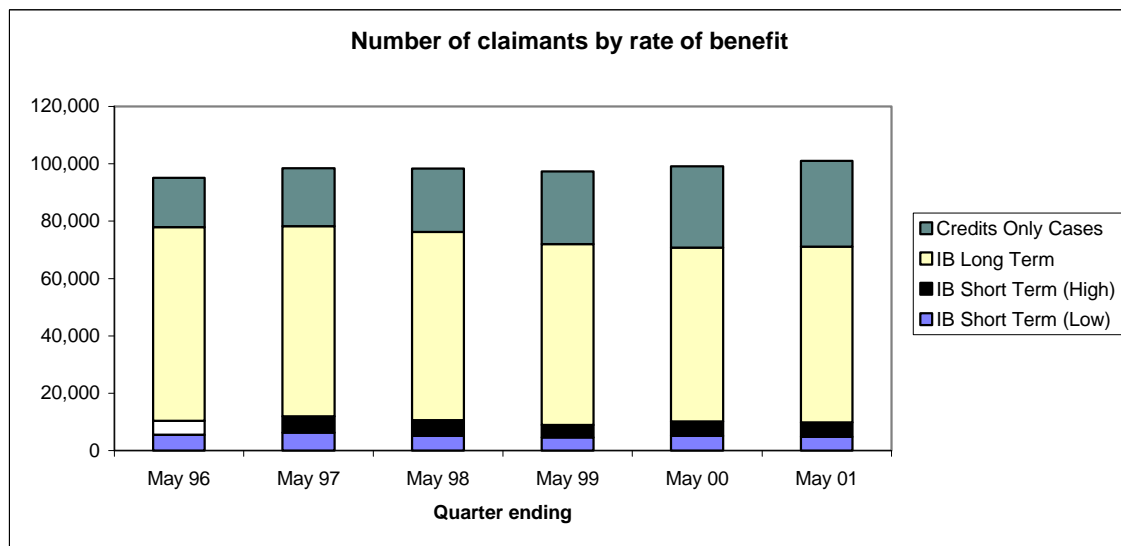
Numbers claiming SDA remain constant (see table C1). This is also the case for Great Britain as a whole. At the end of May 2001 there were 15,494 claimants and 15,384 recipients of SDA.

<sup>(1)</sup> The 'Personal Capability Assessment' (formerly 'all work test') is used to assess the ability of claimants to carry out a range of work-related activities.



**A1 Incapacity Benefit claimants by rate of benefit and split between ex-IVB and other claimants**

		Number of IB claimants						
					IBLT			
Quarter ending	Total	IBST(L)	IBST(H)	Total IBLT	Ex-IVB (protected)	Other IBLT	Credits only	
1996	Feb	<b>95,525</b>	5,505	4,624	68,526	66,272	2,254	16,870
	May	<b>95,072</b>	5,476	4,927	67,488	63,462	4,026	17,181
	Aug	<b>94,218</b>	5,462	5,026	66,711	60,713	5,998	17,019
	Nov	<b>96,654</b>	6,711	4,947	66,306	58,324	7,982	18,690
1997	Feb	<b>97,683</b>	7,063	4,846	66,280	56,388	9,892	19,494
	May	<b>98,469</b>	6,286	5,722	66,168	54,257	11,911	20,293
	Aug	<b>98,956</b>	6,228	6,527	65,309	51,613	13,696	20,892
	Nov	<b>97,034</b>	5,782	5,863	64,136	47,952	16,184	21,253
1998	Feb	<b>99,141</b>	5,946	5,338	65,753	47,499	18,254	22,104
	May	<b>98,342</b>	5,134	5,416	65,601	45,454	20,147	22,191
	Aug	<b>98,779</b>	5,050	5,333	64,872	43,510	21,362	23,524
	Nov	<b>98,656</b>	5,131	4,732	62,602	40,090	22,512	26,191
1999	Feb	<b>98,637</b>	5,133	4,328	63,534	39,753	23,781	25,642
	May	<b>97,332</b>	4,657	4,329	62,963	38,446	24,517	25,383
	Aug	<b>97,587</b>	4,855	4,512	62,154	36,858	25,296	26,066
	Nov	<b>99,303</b>	5,489	4,692	61,608	35,076	26,532	27,514
2000	Feb	<b>98,296</b>	5,477	4,555	60,670	33,422	27,248	27,594
	May	<b>99,040</b>	5,089	5,069	60,556	32,253	28,303	28,326
	Aug	<b>99,368</b>	4,893	5,164	60,654	31,402	29,252	28,657
	Nov	<b>100,229</b>	5,042	4,886	60,879	30,571	30,308	29,422
2001	Feb	<b>101,211</b>	4,904	4,682	61,418	29,858	31,560	30,207
	May	<b>100,989</b>	4,854	4,888	61,278	28,931	32,347	29,969



## A2 Incapacity Benefit claimants by rate of benefit and split between ex-IVB and other claimants

		Number of IB claimants					
		Total	IBST(L)	IBST(H)	IBLT		Credits only
Quarter ending	Ex-IVB (protected)				Other IBLT		
1996	Feb	<b>95,525</b>	5.8%	4.8%	69.4%	2.4%	17.7%
	May	<b>95,072</b>	5.8%	5.2%	66.8%	4.2%	18.1%
	Aug	<b>94,218</b>	5.8%	5.3%	64.4%	6.4%	18.1%
	Nov	<b>96,654</b>	6.9%	5.1%	60.3%	8.3%	19.3%
1997	Feb	<b>97,683</b>	7.2%	5.0%	57.7%	10.1%	20.0%
	May	<b>98,469</b>	6.4%	5.8%	55.1%	12.1%	20.6%
	Aug	<b>98,956</b>	6.3%	6.6%	52.2%	13.8%	21.1%
	Nov	<b>97,034</b>	6.0%	6.0%	49.4%	16.7%	21.9%
1998	Feb	<b>99,141</b>	6.0%	5.4%	47.9%	18.4%	22.3%
	May	<b>98,342</b>	5.2%	5.5%	46.2%	20.5%	22.6%
	Aug	<b>98,779</b>	5.1%	5.4%	44.0%	21.6%	23.8%
	Nov	<b>98,656</b>	5.2%	4.8%	40.6%	22.8%	26.5%
1999	Feb	<b>98,637</b>	5.2%	4.4%	40.3%	24.1%	26.0%
	May	<b>97,332</b>	4.8%	4.4%	39.5%	25.2%	26.1%
	Aug	<b>97,587</b>	5.0%	4.6%	37.8%	25.9%	26.7%
	Nov	<b>99,303</b>	5.5%	4.7%	35.3%	26.7%	27.7%
2000	Feb	<b>98,296</b>	5.6%	4.6%	34.0%	27.7%	28.1%
	May	<b>99,040</b>	5.1%	5.1%	32.6%	28.6%	28.6%
	Aug	<b>99,368</b>	4.9%	5.2%	31.6%	29.4%	28.8%
	Nov	<b>100,229</b>	5.0%	4.9%	30.5%	30.2%	29.4%
2001	Feb	<b>101,211</b>	4.8%	4.6%	29.5%	31.2%	29.8%
	May	<b>100,989</b>	4.8%	4.8%	28.6%	32.0%	29.7%

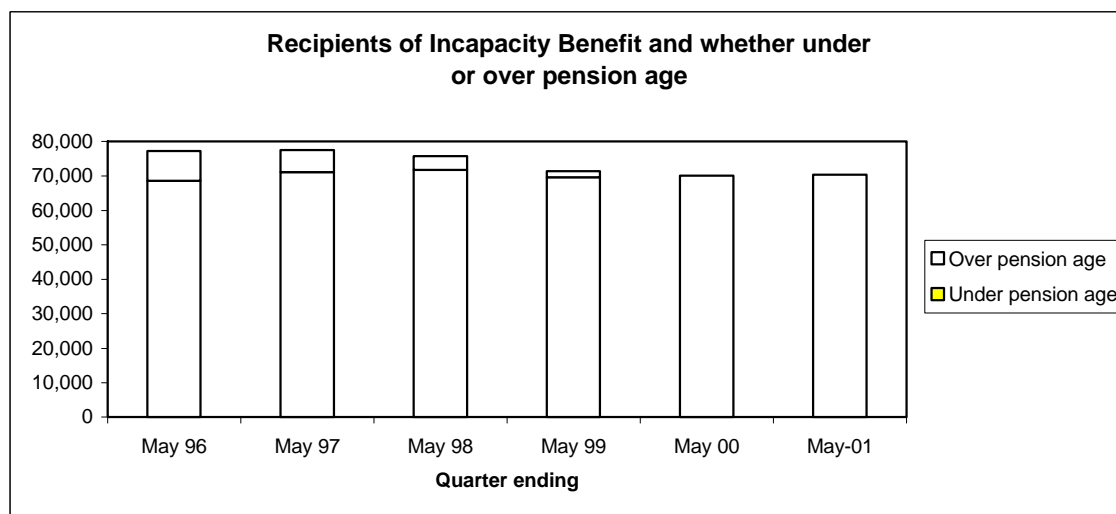


### A3 Incapacity Benefit recipients by whether over pension age, rate of benefit and average amount in payment

Quarter ending	Number of recipients						Average amount in payment (£pw)				
	Total	Total under pension age	Total over pension age	IBST(L)	IBST(H)	IBLT	All recipients	IBST(L)	IBST(H)	IBLT	
1996	Feb	77,930	68,776	9,154	5,179	4,582	68,169	76.54	45.06	54.41	80.42
	May	77,193	68,638	8,555	5,140	4,879	67,174	78.67	46.88	56.69	82.70
	Aug	76,520	68,496	8,024	5,146	4,975	66,399	78.17	46.85	56.60	82.21
	Nov	77,082	69,667	7,415	6,191	4,896	65,995	77.27	46.72	56.31	81.69
1997	Feb	77,439	70,446	6,993	6,611	4,802	66,026	76.72	46.65	56.25	81.22
	May	77,496	71,105	6,391	5,901	5,669	65,926	77.81	47.64	57.26	82.28
	Aug	77,528	71,830	5,698	5,899	6,453	65,176	77.21	47.47	57.38	81.86
	Nov	75,340	71,664	3,676	5,529	5,812	63,999	77.28	47.50	57.45	81.65
1998	Feb	76,632	72,047	4,585	5,694	5,298	65,640	73.13	45.28	54.50	77.05
	May	75,771	71,715	4,056	4,910	5,382	65,479	79.00	49.33	59.19	82.85
	Aug	74,870	71,442	3,428	4,888	5,290	64,692	78.72	49.31	59.29	82.53
	Nov	72,118	70,056	2,062	5,005	4,699	62,414	78.19	49.45	59.11	81.93
1999	Feb	72,471	70,392	2,079	4,850	4,282	63,339	78.22	49.45	59.07	81.72
	May	71,394	69,565	1,829	4,314	4,276	62,804	80.46	50.85	61.13	83.81
	Aug	71,053	69,716	1,337	4,549	4,467	62,037	80.00	50.88	61.14	83.49
	Nov	71,171	70,524	647	5,021	4,655	61,495	79.25	50.79	60.93	82.96
2000	Feb	70,091	69,907	184	5,058	4,489	60,544	78.98	50.86	60.99	82.66
	May	70,128	70,091	37	4,715	4,996	60,417	79.53	51.27	61.84	83.20
	Aug	70,176	70,153	23	4,540	5,093	60,543	79.37	51.35	61.90	82.94
	Nov	70,330	70,295	35	4,736	4,830	60,764	78.95	51.22	61.67	82.49
2001	Feb	70,503	70,475	28	4,577	4,601	61,325	78.84	51.06	61.42	82.23
	May	70,344	70,343	1	4,412	4,790	61,142	81.03	52.50	63.35	84.48

Note: Pension age = over age 65 for men and over age 60 for women

Includes a small number of cases over pension age - incorrectly held or recorded on the computer system



#### A4 Incapacity Benefit recipients by whether over pension age and rate of benefit

		Number of recipients					
Quarter ending	Total	Total under pension age	Total over pension age	IBST(L)	IBST(H)	IBLT	
1996	Feb	77,930	88.3%	11.7%	6.6%	5.9%	87.5%
	May	77,193	88.9%	11.1%	6.7%	6.3%	87.0%
	Aug	76,520	89.5%	10.5%	6.7%	6.5%	86.8%
	Nov	77,082	90.4%	9.6%	8.0%	6.4%	85.6%
1997	Feb	77,439	91.0%	9.0%	8.5%	6.2%	85.3%
	May	77,496	91.8%	8.2%	7.6%	7.3%	85.1%
	Aug	77,528	92.7%	7.3%	7.6%	8.3%	84.1%
	Nov	75,340	95.1%	4.9%	7.3%	7.7%	84.9%
1998	Feb	76,632	94.0%	6.0%	7.4%	6.9%	85.7%
	May	75,771	94.6%	5.4%	6.5%	7.1%	86.4%
	Aug	74,870	95.4%	4.6%	6.5%	7.1%	86.4%
	Nov	72,118	97.1%	2.9%	6.9%	6.5%	86.5%
1999	Feb	72,471	97.1%	2.9%	6.7%	5.9%	87.4%
	May	71,394	97.4%	2.6%	6.0%	6.0%	88.0%
	Aug	71,053	98.1%	1.9%	6.4%	6.3%	87.3%
	Nov	71,171	99.1%	0.9%	7.1%	6.5%	86.4%
2000	Feb	70,091	99.7%	0.3%	7.2%	6.4%	86.4%
	May	70,128	99.9%	0.1%	6.7%	7.1%	86.2%
	Aug	70,176	100.0%	0.0%	6.5%	7.3%	86.3%
	Nov	70,330	100.0%	0.0%	6.7%	6.9%	86.4%
2001	Feb	70,503	100.0%	0.0%	6.5%	6.5%	87.0%
	May	70,344	100.0%	0.0%	6.3%	6.8%	86.9%

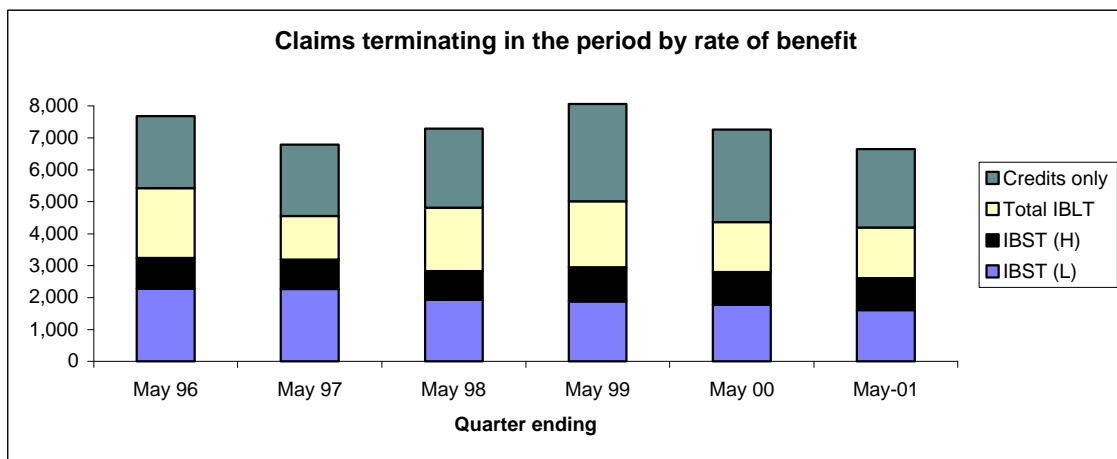
Note: Pension age = over age 65 for men and over age 60 for women



**A5 Incapacity Benefit spells terminating by reason and rate of benefit**

Quarter ending	Total terminations	Number of claims terminating by reason				Number of claims terminating by rate of benefit					
		Not incapable			IBST (L)	IBLT					
		PCA*	Own occ. test	Other reason**		IBST (H)	Total IBLT	Ex-IVB (protected)	Other IBLT	Credits only	
1996 Feb	7,585	2,158	44	5,383	2,561	1,131	1,644	1,404	240	2,249	
1996 May	7,682	2,381	44	5,257	2,284	957	2,188	1,923	265	2,253	
1996 Aug	6,960	2,617	50	4,293	1,808	937	2,007	1,632	375	2,208	
1996 Nov	7,533	2,777	68	4,688	2,182	1,154	1,797	1,171	626	2,400	
1997 Feb	6,802	2,399	50	4,353	2,431	939	1,356	880	476	2,076	
1997 May	6,788	2,584	71	4,133	2,274	925	1,355	850	505	2,234	
1997 Aug	6,719	2,468	37	4,214	1,954	870	1,625	1,041	584	2,270	
1997 Nov	7,814	3,040	63	4,711	2,044	1,101	1,920	1,070	850	2,749	
1998 Feb	6,528	2,406	28	4,094	1,785	843	1,660	827	833	2,240	
1998 May	7,290	2,643	68	4,579	1,931	902	1,982	819	1,163	2,475	
1998 Aug	7,466	3,055	53	4,358	1,759	1,016	2,018	699	1,319	2,673	
1998 Nov	7,590	2,433	218	4,939	1,898	889	1,625	448	1,177	3,178	
1999 Feb	7,758	2,689	154	4,915	2,099	1,003	1,582	404	1,178	3,074	
1999 May	8,062	3,616	73	4,373	1,878	1,072	2,067	678	1,389	3,045	
1999 Aug	7,081	3,044	68	3,969	1,536	998	1,709	570	1,139	2,838	
1999 Nov	6,775	2,121	72	4,582	1,722	926	1,490	510	980	2,637	
2000 Feb	8,316	3,771	68	4,477	1,934	1,071	2,188	714	1,474	3,123	
2000 May	7,262	2,756	107	4,399	1,775	1,030	1,564	372	1,192	2,893	
2000 Aug	6,865	2,966	90	3,809	1,496	1,148	1,445	280	1,165	2,776	
2000 Nov	7,336	2,926	81	4,329	1,592	1,136	1,768	370	1,398	2,840	
2001 Feb	5,562	1,887	62	3,613	1,526	852	1,225	206	1,019	1,959	
2001 May	6,650	2,684	72	3,894	1,608	997	1,587	285	1,302	2,458	

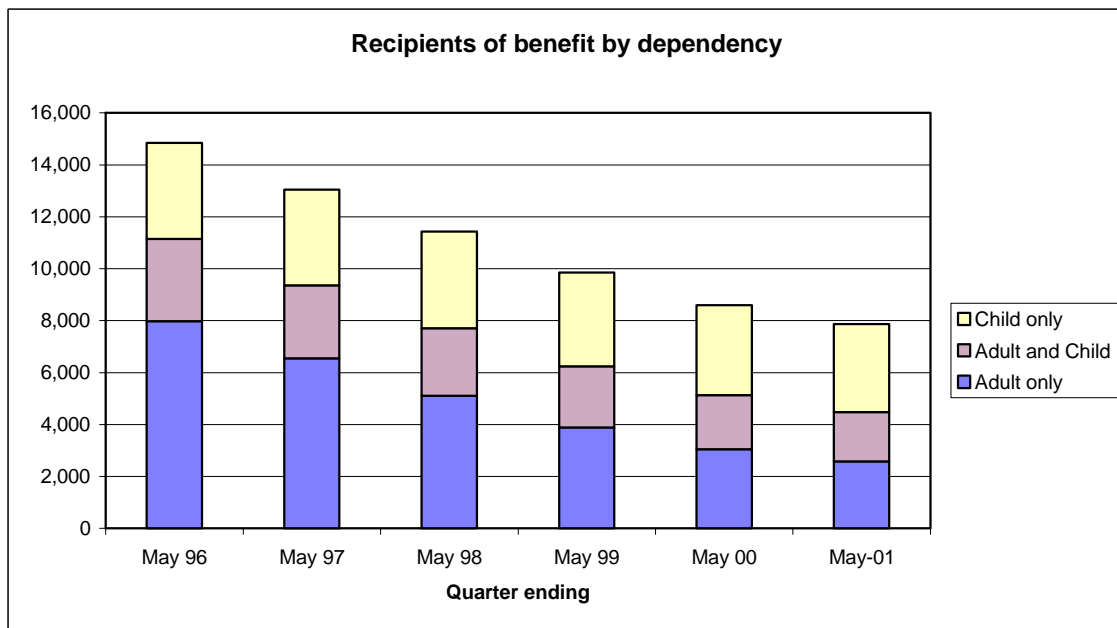
Notes: \*\* Includes "Failure to return questionnaire" and "Did not attend BAMS"  
 Due to operational procedures a small number of All Work Test PCA terminations appear in "Other reason".  
 \* Personal Capability Assessment' formerly the 'all work test'



**A6 Incapacity Benefit recipients by dependency**

		Number of recipients by dependency					
Quarter ending	Total recipients	No dependants	Adult dep(s). only	Adult & child deps.	Child dep(s). only	Total children	
1996	Feb	<b>77,930</b>	62,521	8,523	3,221	3,665	13,694
	May	<b>77,193</b>	62,343	7,973	3,168	3,709	13,718
	Aug	<b>76,520</b>	62,201	7,556	3,044	3,719	13,412
	Nov	<b>77,082</b>	63,278	7,338	2,859	3,607	12,697
1997	Feb	<b>77,439</b>	64,032	6,976	2,815	3,616	12,627
	May	<b>77,496</b>	64,449	6,555	2,809	3,683	12,799
	Aug	<b>77,528</b>	64,919	6,056	2,809	3,744	12,888
	Nov	<b>75,340</b>	63,442	5,611	2,613	3,674	12,158
1998	Feb	<b>76,632</b>	64,823	5,445	2,625	3,739	12,350
	May	<b>75,771</b>	64,340	5,116	2,597	3,718	12,205
	Aug	<b>74,870</b>	63,766	4,752	2,593	3,759	12,366
	Nov	<b>72,118</b>	61,858	4,205	2,389	3,666	11,622
1999	Feb	<b>72,471</b>	62,262	4,170	2,376	3,663	11,555
	May	<b>71,394</b>	61,540	3,893	2,346	3,615	11,413
	Aug	<b>71,053</b>	61,526	3,651	2,283	3,593	11,222
	Nov	<b>71,171</b>	62,099	3,528	2,112	3,432	10,434
2000	Feb	<b>70,091</b>	61,343	3,289	2,069	3,390	10,270
	May	<b>70,128</b>	61,525	3,053	2,085	3,465	10,482
	Aug	<b>70,176</b>	61,682	2,940	2,071	3,483	10,506
	Nov	<b>70,330</b>	62,173	2,871	1,935	3,351	9,850
2001	Feb	<b>70,503</b>	62,453	2,757	1,913	3,380	9,895
	May	<b>70,344</b>	62,467	2,578	1,901	3,398	9,920

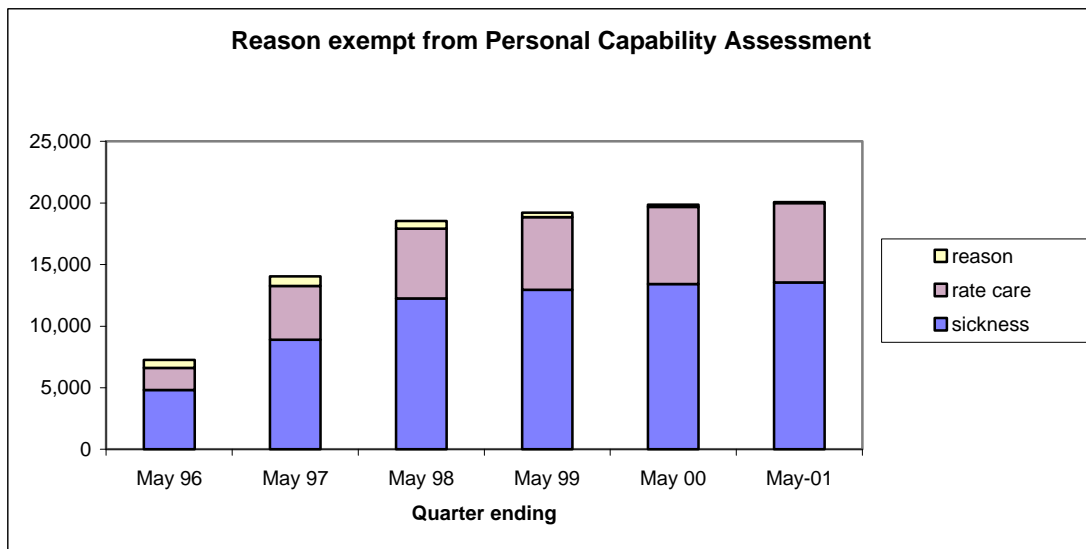
Note: Table does not reflect dependency status of all IB claimants, but only those who have declared dependants for benefit purposes.



**A7 Incapacity Benefit recipients by reason exempt from Personal Capability Assessment**

		Claimants exempt from PCA by reason			
Year	Quarter ending	Total exempt <sup>(1)</sup>	Severe sickness	DLA high rate care	Other reason <sup>(2)</sup>
1996	Feb	5,491	3,761	1,181	549
	May	7,245	4,833	1,775	637
	Aug	8,083	5,507	1,970	606
	Nov	9,717	6,461	2,632	624
1997	Feb	11,033	7,251	3,155	627
	May	14,030	8,877	4,390	763
	Aug	16,460	10,474	5,205	781
	Nov	17,458	11,309	5,494	655
1998	Feb	18,120	11,824	5,631	665
	May	18,534	12,254	5,671	609
	Aug	18,808	12,637	5,649	522
	Nov	19,467	13,242	5,828	397
1999	Feb	19,369	13,119	5,861	389
	May	19,226	12,961	5,903	362
	Aug	19,666	13,096	6,238	332
	Nov	19,960	13,391	6,317	252
2000	Feb	19,879	13,406	6,261	212
	May	19,866	13,417	6,279	170
	Aug	19,869	13,433	6,295	141
	Nov	20,008	13,479	6,406	123
2001	Feb	20,160	13,553	6,503	104
	May	20,087	13,534	6,470	83

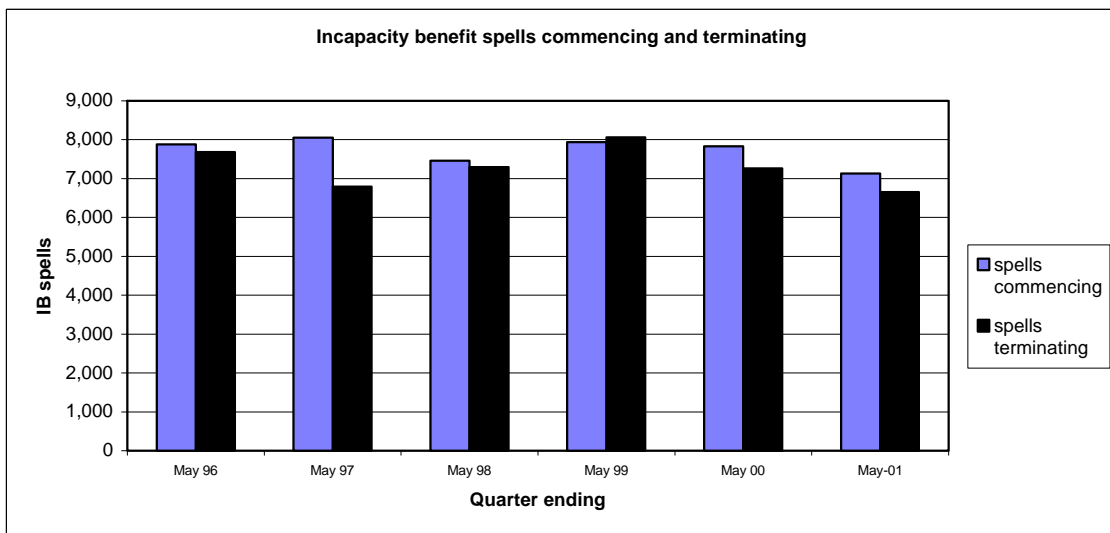
Notes: From April 2000 the Personal Capability Assessment replaced the 'All Work Test'  
 (1) excludes exempt because claimant over 58 and in receipt of IVB since Dec 93  
 (2) other reason includes terminally ill and SDA passports



**A8 Incapacity Benefit spells commencing and terminating in the quarter**

	<b>Quarter ending</b>	<b>Spells Commencing</b>	<b>Spells Terminating</b>	<b>Average duration of terminated spells (days)</b>	<b>Ratio of new claims to terminations</b>
1996	Feb	7,785	7,585	220	1.03
	May	7,876	7,682	292	1.03
	Aug	7,250	6,960	330	1.04
	Nov	10,893	7,533	290	1.45
1997	Feb	8,685	6,802	268	1.28
	May	8,050	6,788	287	1.19
	Aug	8,238	6,719	351	1.23
	Nov	8,676	7,814	370	1.11
1998	Feb	8,133	6,528	379	1.25
	May	7,460	7,290	394	1.02
	Aug	8,387	7,466	398	1.12
	Nov	9,519	7,590	337	1.25
1999	Feb	8,656	7,758	345	1.12
	May	7,933	8,062	434	0.98
	Aug	7,566	7,081	445	1.07
	Nov	8,716	6,775	428	1.29
2000	Feb	7,618	8,316	494	0.92
	May	7,834	7,262	427	1.08
	Aug	7,459	6,865	420	1.09
	Nov	7,989	7,336	459	1.09
2001	Feb	6,515	5,562	411	1.17
	May	7,131	6,650	469	1.07

Note: Average duration is an approximate measure because of the way date of claim was recorded when IVB claimants moved to the new IB computer system.



**B1 Number of claimants of Incapacity  
Benefit at 31 May 2001, by age, sex,  
and rate of benefit**

Sheet 1

	All IB	IBST(L)	IBST(H)	IBLT			Credits Only
				Total IBLT	Ex-IVB (protected)	Other IBLT	
<b>All Persons</b>							
All Ages	<b>100,989</b>	<b>4,854</b>	<b>4,888</b>	<b>61,278</b>	<b>28,931</b>	<b>32,347</b>	<b>29,969</b>
Under 20	<b>1,278</b>	283	4	2	0	2	989
20-24	<b>4,002</b>	482	202	341	0	341	2977
25-29	<b>5,432</b>	522	434	1816	165	1651	2660
30-34	<b>8,204</b>	570	552	4012	1117	2895	3070
35-39	<b>10,256</b>	533	597	5521	2206	3315	3605
40-44	<b>11,349</b>	477	562	6653	3044	3609	3657
45-49	<b>12,444</b>	456	601	7662	3838	3824	3725
50-54	<b>16,090</b>	592	696	10564	5258	5306	4238
55-59	<b>19,535</b>	599	809	14255	7413	6842	3872
60-64	<b>12,382</b>	340	431	10452	5890	4562	1159
65 and over	<b>17</b>	0	0	0	0	0	17
<b>Men</b>							
All Ages	<b>61,299</b>	<b>3,139</b>	<b>3,005</b>	<b>37,406</b>	<b>17,606</b>	<b>19,800</b>	<b>17,749</b>
Under 20	<b>599</b>	131	3	1	0	1	464
20-24	<b>2,234</b>	255	108	160	0	160	1711
25-29	<b>2,950</b>	270	213	746	45	701	1721
30-34	<b>4,271</b>	329	281	1570	338	1232	2091
35-39	<b>5,520</b>	327	346	2455	758	1697	2392
40-44	<b>6,245</b>	342	325	3477	1423	2054	2101
45-49	<b>6,864</b>	298	350	4245	2003	2242	1971
50-54	<b>8,851</b>	423	422	5904	2852	3052	2102
55-59	<b>11,377</b>	424	526	8397	4297	4100	2030
60-64	<b>12,372</b>	340	431	10451	5890	4561	1150
65 and over	<b>16</b>	0	0	0	0	0	16
<b>Women</b>							
All Ages	<b>39,690</b>	<b>1,715</b>	<b>1,883</b>	<b>23,872</b>	<b>11,325</b>	<b>12,547</b>	<b>12,220</b>
Under 20	<b>679</b>	152	1	1	0	1	525
20-24	<b>1,768</b>	227	94	181	0	181	1266
25-29	<b>2,482</b>	252	221	1070	120	950	939
30-34	<b>3,933</b>	241	271	2442	779	1663	979
35-39	<b>4,736</b>	206	251	3066	1448	1618	1213
40-44	<b>5,104</b>	135	237	3176	1621	1555	1556
45-49	<b>5,580</b>	158	251	3417	1835	1582	1754
50-54	<b>7,239</b>	169	274	4660	2406	2254	2136
55-59	<b>8,158</b>	175	283	5858	3116	2742	1842
60 and over	<b>11</b>	0	0	1	0	1	10

\* includes SDA cases where incapacity has not yet been decided.

Includes a small number of cases over pension age - incorrectly held or recorded on the computer system



**B1 Number of recipients of Incapacity  
Benefit at 31 May 2001, by age, sex,  
and rate of benefit**

Sheet 2

	All IB	IBST(L)	IBST(H)	IBLT		
				Total IBLT	Ex-IVB (protected)	Other IBLT
<b>All Persons</b>						
All Ages	<b>70,344</b>	<b>4,412</b>	<b>4,790</b>	<b>61,142</b>	<b>28,911</b>	<b>32,231</b>
Under 20	<b>215</b>	211	2	2	0	2
20-24	<b>945</b>	412	193	340	0	340
25-29	<b>2,691</b>	463	425	1803	165	1638
30-34	<b>5,066</b>	525	540	4001	1113	2888
35-39	<b>6,579</b>	490	586	5503	2204	3299
40-44	<b>7,627</b>	442	550	6635	3039	3596
45-49	<b>8,653</b>	418	593	7642	3836	3806
50-54	<b>11,786</b>	555	687	10544	5255	5289
55-59	<b>15,586</b>	567	792	14227	7410	6817
60-64	<b>11,196</b>	329	422	10445	5889	4556
65 and over	<b>0</b>	0	0	0	0	0
<b>Men</b>						
All Ages	<b>43,072</b>	<b>2,832</b>	<b>2,927</b>	<b>37,313</b>	<b>17,594</b>	<b>19,719</b>
Under 20	<b>99</b>	96	2	1	0	1
20-24	<b>474</b>	213	101	160	0	160
25-29	<b>1,170</b>	226	206	738	45	693
30-34	<b>2,124</b>	291	270	1563	336	1227
35-39	<b>3,074</b>	294	339	2441	757	1684
40-44	<b>4,091</b>	314	315	3462	1419	2043
45-49	<b>4,850</b>	271	345	4234	2002	2232
50-54	<b>6,699</b>	394	415	5890	2850	3040
55-59	<b>9,296</b>	404	512	8380	4296	4084
60-64	<b>11,195</b>	329	422	10444	5889	4555
65 and over	<b>0</b>	0	0	0	0	0
<b>Women</b>						
All Ages	<b>27,272</b>	<b>1,580</b>	<b>1,863</b>	<b>23,829</b>	<b>11,317</b>	<b>12,512</b>
Under 20	<b>116</b>	115	0	1	0	1
20-24	<b>471</b>	199	92	180	0	180
25-29	<b>1,521</b>	237	219	1065	120	945
30-34	<b>2,942</b>	234	270	2438	777	1661
35-39	<b>3,505</b>	196	247	3062	1447	1615
40-44	<b>3,536</b>	128	235	3173	1620	1553
45-49	<b>3,803</b>	147	248	3408	1834	1574
50-54	<b>5,087</b>	161	272	4654	2405	2249
55-59	<b>6,290</b>	163	280	5847	3114	2733
60 and over	<b>1</b>	0	0	1	0	1

Includes a small number of cases over pension age - incorrectly held or recorded on the computer system

**B2 Number of terminations of Incapacity Benefit  
in the period 1 March 2001 to 31 May 2001,  
by rate of benefit and reason**

	All cases	IBST(L)	IBST(H)	IBLT			Credits only
				Total IBLT	Ex-IVB IBLT	Other IBLT	
<b>All Persons</b>	<b>6,650</b>	1,608	997	1,587	285	1,302	2,458
Closed Certificate	<b>2,421</b>	1202	341	205	14	191	673
Death of Claimant	<b>267</b>	9	12	185	91	94	61
At request of claimant	<b>321</b>	123	42	45	3	42	111
Failure to attend medical	<b>259</b>	13	26	43	9	34	177
Failure to provide information	<b>202</b>	13	18	10	2	8	161
Not incapable Own Occ Test	<b>72</b>	49	1	0	0	0	22
Not incapable PCA	<b>2,684</b>	99	438	989	154	835	1158
Return to work	<b>265</b>	70	111	84	8	76	0
Other	<b>159</b>	30	8	26	4	22	95



**B3 Number of claimants of Incapacity Benefit at  
31 May 2001, by rate of benefit  
and District Council**

Sheet 1

	All IB	IBST(L)	IBST(H)	IBLT	Credits only	Working age Population*	All IB as % of population
<b>Claimants</b>							
<b>All Persons</b>							
<b>All Cases</b>	<b>100,989</b>	<b>3,815</b>	<b>3,875</b>	<b>48,857</b>	<b>22,995</b>	<b>1,030,400</b>	<b>9.80%</b>
Ards	3,394	174	200	2260	760	45,500	7.46%
Belfast	19,814	810	794	10912	7298	165,800	11.95%
Castlereagh	2,791	125	148	1974	544	40,200	6.94%
Down	3,312	163	157	2080	912	38,400	8.63%
Lisburn	5,061	204	246	3139	1472	68,500	7.39%
North Down	2,619	135	158	1757	569	45,700	5.73%
Antrim	2,253	114	114	1362	663	32,900	6.85%
Ballymena	2,794	148	154	1721	771	37,000	7.55%
Ballymoney	1,538	77	82	971	408	15,900	9.67%
Carrickfergus	1,683	84	100	1143	356	23,800	7.07%
Coleraine	2,649	129	133	1593	794	34,300	7.72%
Cookstown	2,623	125	111	1628	759	19,200	13.66%
Larne	1,520	81	63	974	402	18,900	8.04%
Magherafelt	2,384	131	112	1570	571	23,300	10.23%
Moyle	904	33	38	550	283	9,300	9.72%
Newtownabbey	3,845	205	226	2473	941	50,700	7.58%
Armagh	3,126	169	171	2013	773	33,100	9.44%
Banbridge	2,283	134	141	1541	467	25,700	8.88%
Craigavon	5,650	321	261	3815	1253	48,900	11.55%
Dungannon	3,246	166	186	1939	955	29,300	11.08%
Newry & Mourne	6,053	287	280	3442	2044	52,400	11.55%
Derry	8,528	339	293	4824	3072	65,300	13.06%
Fermanagh	2,727	159	152	1554	862	34,300	7.95%
Limavady	1,910	97	88	1179	546	19,700	9.70%
Omagh	3,306	180	167	2005	954	29,100	11.36%
Strabane	3,106	120	146	1845	995	23,200	13.39%
Missing postcode	1,870	144	167	1014	545	..	..

\* = Mid 2000 estimates. Population of working age. Namely 16-59 for Females, 16-64 for Males.

.. = Not available

Note: Approximately 2% of records on the May 2001 dataset had missing or invalid postcodes, without which district council cannot be assigned.



**B3 Number of recipients of Incapacity Benefit at  
31 May 2001, by rate of benefit  
and District Council**

Sheet 2

	All IB	IBST(L)	IBST(H)	IBLT	Working age Population*	All IB as % of population
<b>Recipients</b>						
<b>All Persons</b>						
<b>All Cases</b>	<b>70,344</b>	<b>3,761</b>	<b>4,079</b>	<b>53,573</b>	<b>1,030,400</b>	<b>6.83%</b>
Ards	2,622	166	196	2260	45,500	5.76%
Belfast	12,363	713	768	10882	165,800	7.46%
Castlereagh	2,234	119	146	1969	40,200	5.56%
Down	2,382	151	154	2077	38,400	6.20%
Lisburn	3,547	173	241	3133	68,500	5.18%
North Down	2,034	123	156	1755	45,700	4.45%
Antrim	1,578	104	113	1361	32,900	4.80%
Ballymena	2,004	132	152	1720	37,000	5.42%
Ballymoney	1,113	65	81	967	15,900	7.00%
Carrickfergus	1,315	79	96	1140	23,800	5.53%
Coleraine	1,831	110	129	1592	34,300	5.34%
Cookstown	1,846	116	109	1621	19,200	9.61%
Larne	1,107	73	60	974	18,900	5.86%
Magherafelt	1,799	121	110	1568	23,300	7.72%
Moyle	616	29	38	549	9,300	6.62%
Newtownabbey	2,880	187	223	2470	50,700	5.68%
Armagh	2,334	158	168	2008	33,100	7.05%
Banbridge	1,805	126	139	1540	25,700	7.02%
Craigavon	4,365	302	256	3807	48,900	8.93%
Dungannon	2,271	156	184	1931	29,300	7.75%
Newry & Mourne	3,978	266	276	3436	52,400	7.59%
Derry	5,389	292	284	4813	65,300	8.25%
Fermanagh	1,845	146	151	1548	34,300	5.38%
Limavady	1,350	86	87	1177	19,700	6.85%
Omagh	2,334	173	163	1998	29,100	8.02%
Strabane	2,086	104	144	1838	23,200	8.99%
Missing postcode	1,316	142	166	1008	..	..

\* = Mid 2000 estimates. Population of working age. Namely 16-59 for Females, 16-64 for Males.

.. = Not available

Note: Approximately 2% of records on the May 2001 dataset had missing or invalid postcodes, without which district council cannot be assigned.



**B4 Number of recipients of Incapacity Benefit at  
31 May 2001 by rate of benefit, dependency and sex**

Sheet 1

	All cases	IBST(L)	IBST(H)	IBLT		
				Total IBLT	Ex-IVB IBLT	Other IBLT
<b>All Persons</b>						
<b>All Cases</b>	<b>70,344</b>	<b>4,412</b>	<b>4,790</b>	<b>61,142</b>	<b>28,911</b>	<b>32,231</b>
No Dependants	<b>62,468</b>	4,324	4,531	53,613	24,071	29,542
Adult Dependant only	<b>2,578</b>	88	23	2,467	2,221	246
Adult and:						
1 child	<b>901</b>	0	41	860	449	411
2 children	<b>527</b>	0	31	496	232	264
3 children	<b>295</b>	0	23	272	121	151
4 children	<b>130</b>	0	14	116	54	62
5 or more children	<b>48</b>	0	7	41	17	24
No Adult and:						
1 child	<b>1,593</b>	0	58	1,535	846	689
2 children	<b>1,070</b>	0	36	1,034	542	492
3 children	<b>484</b>	0	15	469	222	247
4 children	<b>177</b>	0	8	169	95	74
5 or more children	<b>73</b>	0	3	70	41	29
Total number of children	<b>9,920</b>	0	487	9,433	4,793	4,640

Note: Table does not reflect actual dependency status of all IB claimants, but only those who have declared dependants for benefit purposes.



**B4 Number of recipients of Incapacity Benefit at  
31 May 2001 by rate of benefit, dependency and sex**

Sheet 2

	All cases	IBST(L)	IBST(H)	IBLT		
				Total IBLT	Ex-IVB IBLT	Other IBLT
<b>Men</b>						
<b>All Cases</b>	<b>43,072</b>	<b>2,832</b>	<b>2,927</b>	<b>37,313</b>	<b>17,594</b>	<b>19,719</b>
No Dependants	36,619	2,747	2,720	31,152	13,552	17,600
Adult Dependant only	2,536	85	23	2,428	2,186	242
Adult and:						
1 child	865	0	39	826	429	397
2 children	486	0	29	457	214	243
3 children	278	0	22	256	110	146
4 children	122	0	14	108	51	57
5 or more children	46	0	6	40	17	23
No Adult and:						
1 child	997	0	34	963	528	435
2 children	653	0	21	632	313	319
3 children	315	0	11	304	121	183
4 children	114	0	5	109	53	56
5 or more children	41	0	3	38	20	18
Total number of children	7,341	0	395	6,946	3,325	3,621

Note: Table does not reflect actual dependency status of all IB claimants, but only those who have declared dependants for benefit purposes.



**B4 Number of recipients of Incapacity Benefit at  
31 May 2001 by rate of benefit, dependency and sex**

Sheet 3

	All cases	IBST(L)	IBST(H)	IBLT		
				Total IBLT	Ex-IVB IBLT	Other IBLT
<b>Women</b>						
<b>All Cases</b>	<b>27,272</b>	<b>1,580</b>	<b>1,863</b>	<b>23,829</b>	<b>11,317</b>	<b>12,512</b>
No Dependants	25,849	1,577	1,811	22,461	10,519	11,942
Adult Dependant only	42	3	0	39	35	4
Adult and:						
1 child	36	0	2	34	20	14
2 children	41	0	2	39	18	21
3 children	17	0	1	16	11	5
4 children	8	0	0	8	3	5
5 or more children	2	0	1	1	0	1
No Adult and:						
1 child	596	0	24	572	318	254
2 children	417	0	15	402	229	173
3 children	169	0	4	165	101	64
4 children	63	0	3	60	42	18
5 or more children	32	0	0	32	21	11
Total number of children	2,579	0	92	2,487	1,468	1,019

Note: Table does not reflect actual dependency status of all IB claimants, but only those who have declared dependants for benefit purposes.



**B5 Number of recipients of Incapacity Benefit at 31 May 2001  
by rate of benefit, and weekly amounts in payment**

	All Recipients	Total weekly amount paid £	Average weekly amount paid £
<b>All Persons</b>			
<b>All IB Rates</b>	<b>70,344</b>	<b>5,700,180</b>	<b>81.03</b>
<b>IBST(L)</b>	4,412	231,642	52.50
<b>IBST(H)</b>	4,790	303,452	63.35
<b>IBLT (All)</b>	61,142	5,165,085	84.48
<b>IBLT (Ex-IVB)</b>	28,911	2,672,822	92.45
Invalidity Allowance	18,022	183,167	10.16
Additional Pension	21,069	332,981	15.80
Graduated Retirement Benefit	0	0	0.00
<b>IBLT (Other)</b>	32,231	2,492,264	77.33
Incapacity Age Addition	13,654	150,508	11.02



**B6 Number of recipients of Incapacity Benefit at  
31 May 2001 by rate of benefit and  
reason exempt from the Personal Capability Assessment**

	All IB	IBST(L)	IBST (H)	IBLT
<b>All Persons</b>	<b>20,087</b>	73	345	19,669
Severe Sickness	<b>13,534</b>	51	237	13,246
DLA High Care rate	<b>6,470</b>	21	106	6,343
Other reason <sup>(1)</sup>	<b>83</b>	1	2	80

(1) other reason includes terminally ill and SDA passports



**B7 Number of claimants of Incapacity Benefit at  
31 May 2001, by Diagnosis Group\***

	All IB	% of all IB	Men	Women
<b>All Cases</b>	<b>100,989</b>	<b>100.0%</b>	<b>61,299</b>	<b>39,690</b>
Claimants without any diagnosis code on the system	136	0.1%	83	53
Certain infectious and Parasitic Diseases (A00 - B99)	903	0.9%	544	359
Neoplasms (C00 - D48)	1,046	1.0%	549	497
Diseases of the Blood and Blood forming organs and certain diseases involving the immune mechanism (D50 - D89)	250	0.2%	118	132
Endocrine, Nutritional and Metabolic Diseases (E00 -E90)	1,367	1.4%	893	474
Mental and Behavioural Disorders (F00 - F99)	31,493	31.2%	17,036	14,457
Diseases of the Nervous System (G00 - G99)	3,925	3.9%	2,191	1,734
Diseases of the Eye and Adnexa (H00 -H59)	458	0.5%	349	109
Diseases of the Ear and Mastoid Process (H60 - H95)	382	0.4%	249	133
Disease of the Circulatory System (I00 - I99)	9,242	9.2%	7,405	1,837
Diseases of the Respiratory System (J00 - J99)	3,155	3.1%	1,961	1,194
Diseases of the Digestive System (K00 - K93)	1,730	1.7%	1,145	585
Diseases of the Skin and Subcutaneous System (L00 - L99)	1,110	1.1%	691	419
Diseases of the Musculoskeletal system and Connective Tissue (M00 - M99)	21,770	21.6%	13,033	8,737
Diseases of the Genitourinary System (N00 - N99)	826	0.8%	324	502
Pregnancy, Childbirth and the Puerperium (O00 - O99)	860	0.9%	2	858
Certain Conditions Originating in the Perinatal Period (P00 - P96)	4	0.0%	0	4
Congenital Malformations, Deformations and Chromosomal Abnormalities (Q00 - Q99)	100	0.1%	56	44
Symptoms, Signs and Abnormal Clinical and Laboratory findings, not elsewhere classified (R00 - R99)	14,176	14.0%	8,502	5,674
Injury, Poisoning and certain other consequences of external causes (S00 - U22)	7,119	7.0%	5,510	1,609
Factors influencing Health Status and Contact with Health Services (Z00 - Z99)	937	0.9%	658	279

\*Diagnosis Group is taken from ICD10 published by the World Health Organisation.



**B8 Number of claimants of Incapacity  
Benefit at 31 May 2001, by age, sex,  
and duration of benefit**

	<b>All IB</b>	Under 3 months	3 to under 6 months	6 to under 12 months	1 to under 2 years	2 to under 4 years	4 years and over
<b>All Persons</b>							
All Ages	<b>100,989</b>	<b>6,114</b>	<b>5,704</b>	<b>8,819</b>	<b>12,709</b>	<b>17,998</b>	<b>49,645</b>
Under 20	<b>1,278</b>	587	319	235	105	32	0
20-24	<b>4,002</b>	712	601	755	769	817	348
25-29	<b>5,432</b>	568	600	821	945	1259	1239
30-34	<b>8,204</b>	620	640	1016	1305	1702	2921
35-39	<b>10,256</b>	752	668	1007	1491	1957	4381
40-44	<b>11,349</b>	679	606	1042	1586	2093	5343
45-49	<b>12,444</b>	653	641	992	1609	2165	6384
50-54	<b>16,090</b>	680	666	1154	1960	2805	8825
55-59	<b>19,535</b>	617	658	1238	2022	3244	11756
60-64	<b>12,382</b>	246	305	559	917	1922	8433
65 and over	<b>17</b>	0	0	0	0	2	15
<b>Men</b>							
All Ages	<b>61,299</b>	<b>3,611</b>	<b>3,475</b>	<b>5,392</b>	<b>7,860</b>	<b>10,891</b>	<b>30,070</b>
Under 20	<b>599</b>	280	157	103	46	13	0
20-24	<b>2,234</b>	391	371	428	449	426	169
25-29	<b>2,950</b>	323	345	463	545	651	623
30-34	<b>4,271</b>	361	359	621	737	907	1286
35-39	<b>5,520</b>	464	385	612	927	1123	2009
40-44	<b>6,245</b>	387	371	591	962	1171	2763
45-49	<b>6,864</b>	368	362	566	938	1198	3432
50-54	<b>8,851</b>	399	395	663	1099	1584	4711
55-59	<b>11,377</b>	392	425	786	1241	1895	6638
60-64	<b>12,372</b>	246	305	559	916	1921	8425
65 and over	<b>16</b>	0	0	0	0	2	14
<b>Women</b>							
All Ages	<b>39,690</b>	<b>2,503</b>	<b>2,229</b>	<b>3,427</b>	<b>4,849</b>	<b>7,107</b>	<b>19,575</b>
Under 20	<b>679</b>	307	162	132	59	19	0
20-24	<b>1,768</b>	321	230	327	320	391	179
25-29	<b>2,482</b>	245	255	358	400	608	616
30-34	<b>3,933</b>	259	281	395	568	795	1635
35-39	<b>4,736</b>	288	283	395	564	834	2372
40-44	<b>5,104</b>	292	235	451	624	922	2580
45-49	<b>5,580</b>	285	279	426	671	967	2952
50-54	<b>7,239</b>	281	271	491	861	1,221	4114
55-59	<b>8,158</b>	225	233	452	781	1,349	5118
60 and over	<b>11</b>	0	0	0	1	1	9

\* includes SDA cases where incapacity has not yet been decided.

Includes a small number of cases over pension age - incorrectly held or recorded on the computer system



**B9 Number of claimants of Incapacity Benefit at  
31 May 2001, by rate of benefit  
and Government Office Region**

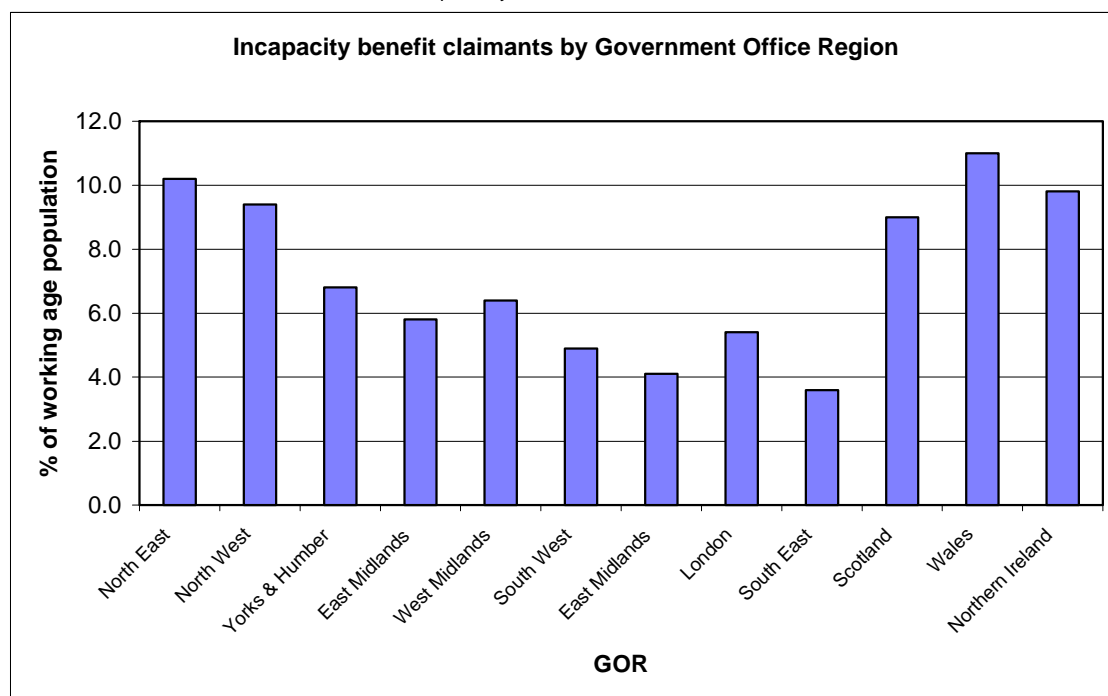
Sheet 1

Thousands

	All IB	IBST(L)	IBST(H)	IBLT	Credits only	All IB as % of working age population
<b>All Cases (GB)</b>	<b>2,327.0</b>	<b>97.4</b>	<b>94.2</b>	<b>1,327.8</b>	<b>807.5</b>	<b>6.5</b>
North East	160.8	7.4	6.3	98.7	48.5	10.2
North West	392.1	16.4	15.5	226.3	133.9	9.4
Yorks & Humber	208.9	10.1	9.8	123.5	65.5	6.8
East Midlands	150.8	6.0	6.6	94.1	44.0	5.8
West Midlands	208.9	9.3	9.2	122.6	67.8	6.4
South West	145.9	6.4	6.0	82.2	51.3	4.9
East Midlands	136.4	6.0	6.5	77.1	46.8	4.1
London	257.1	7.5	8.2	104.3	137.2	5.4
South East	178.5	7.2	8.0	97.6	65.6	3.6
England	1,839.4	76.3	76.1	1,026.4	660.6	6.0
Scotland	286.7	12.4	10.9	169.5	93.9	9.0
Wales	192.3	8.7	7.1	123.9	52.6	11.0
Northern Ireland	101.0	4.9	4.9	61.3	28.9	9.8
Overseas	8.6	0.1*	0.1*	8.0	0.5	0.0

Mid 2000 estimates. Population of working age. Namely 16-59 for Females, 16-64 for Males.

\*Figures under 500 are subject to a high degree of sampling error and should only be used as a guide to the current situation as GB data are taken from a 5% extract of the computer system.



**B9 Number of recipients of Incapacity Benefit at  
31 May 2001, by rate of benefit  
and Government Office Region**

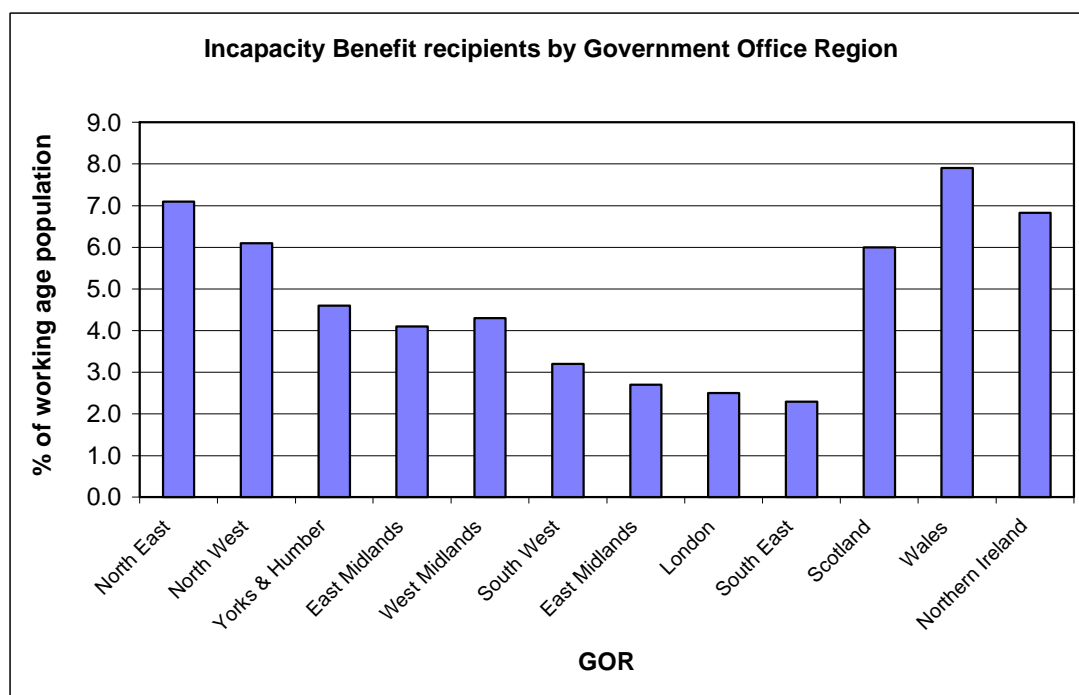
**Sheet 2**

*Thousands*

	All IB	IBST(L)	IBST(H)	IBLT	All IB as % of working age population
<b>All Cases (GB)</b>	<b>1,516.2</b>	<b>96.0</b>	<b>93.9</b>	<b>1,326.3</b>	<b>4.3</b>
North East	112.0	7.2	6.2	98.6	7.1
North West	257.7	16.2	15.5	226.0	6.1
Yorks & Humber	143.1	10.0	9.7	123.3	4.6
East Midlands	106.5	5.9	6.6	94.0	4.1
West Midlands	140.9	9.1	9.2	122.6	4.3
South West	94.5	6.4	6.0	82.1	3.2
East Midlands	89.3	5.9	6.4	76.9	2.7
London	119.7	7.4	8.2	104.1	2.5
South East	112.6	7.1	8.0	97.5	2.3
England	1,176.1	75.2	75.9	1,025.1	3.8
Scotland	192.5	12.2	10.9	169.4	6.0
Wales	139.6	8.6	7.1	123.9	7.9
Northern Ireland	70.3	4.4	4.8	61.1	6.8
Overseas	8.0	0.1*	0.1*	7.9	0.0

Mid 2000 estimates. Population of working age. Namely 16-59 for Females, 16-64 for Males.

\*Figures under 500 are subject to a high degree of sampling error and should only be used as a guide to the current situation as GB data are taken from a 5% extract of the computer system.

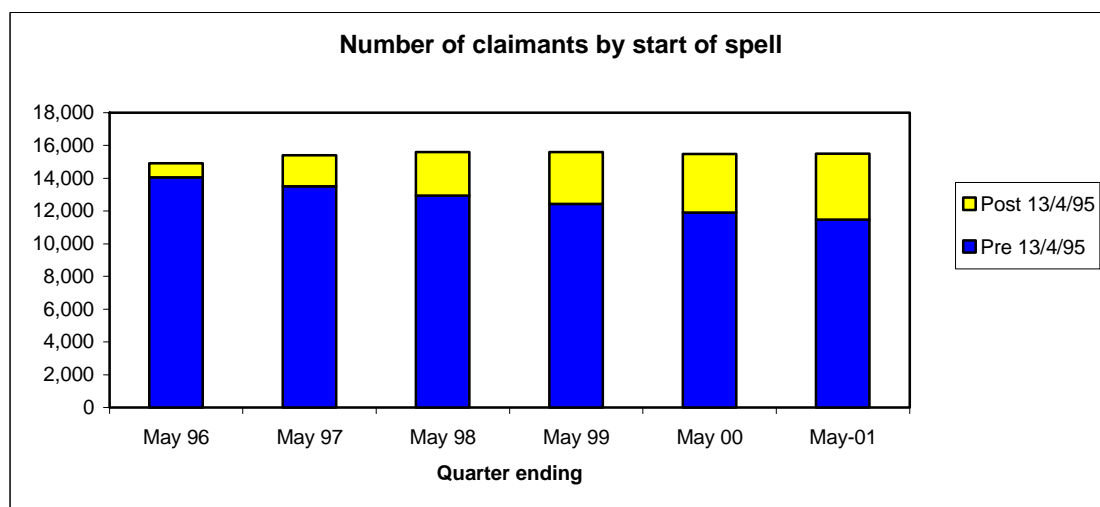


### C1 Severe Disablement Allowance claimants and recipients by start of spell

Year	Quarter ending	SDA claimants <sup>(1)</sup>			SDA recipients <sup>(1)</sup>		
		Total	Pre 13th <sup>(2)</sup>	Post 13th <sup>(2)</sup>	Total	Pre 13th <sup>(2)</sup>	Post 13th <sup>(2)</sup>
			April '95	April '95		April '95	April '95
			cases	cases		cases	cases
1996	Feb	<b>14,812</b>	14,185	627	<b>14,684</b>	14,101	583
	May	<b>14,901</b>	14,049	852	<b>14,784</b>	13,981	803
	Aug	<b>15,045</b>	13,922	1,123	<b>14,892</b>	13,854	1,038
	Nov	<b>15,239</b>	13,770	1,469	<b>15,077</b>	13,702	1,375
1997	Feb	<b>15,306</b>	13,634	1,672	<b>15,177</b>	13,582	1,595
	May	<b>15,400</b>	13,506	1,894	<b>15,278</b>	13,457	1,821
	Aug	<b>15,504</b>	13,350	2,154	<b>15,376</b>	13,312	2,064
	Nov	<b>15,559</b>	13,216	2,343	<b>15,449</b>	13,191	2,258
1998	Feb	<b>15,579</b>	13,068	2,511	<b>15,470</b>	13,041	2,429
	May	<b>15,589</b>	12,939	2,650	<b>15,502</b>	12,915	2,587
	Aug	<b>15,612</b>	12,799	2,813	<b>15,498</b>	12,767	2,731
	Nov	<b>15,689</b>	12,599	3,090	<b>15,520</b>	12,573	2,947
1999	Feb	<b>15,629</b>	12,517	3,112	<b>15,514</b>	12,497	3,017
	May	<b>15,593</b>	12,430	3,163	<b>15,509</b>	12,415	3,094
	Aug	<b>15,571</b>	12,330	3,241	<b>15,494</b>	12,308	3,186
	Nov	<b>15,507</b>	12,180	3,327	<b>15,407</b>	12,158	3,249
2000	Feb	<b>15,463</b>	12,028	3,435	<b>15,366</b>	12,011	3,355
	May	<b>15,470</b>	11,904	3,566	<b>15,352</b>	11,886	3,466
	Aug	<b>15,458</b>	11,795	3,663	<b>15,355</b>	11,772	3,583
	Nov	<b>15,489</b>	11,690	3,799	<b>15,385</b>	11,668	3,717
2001	Feb	<b>15,507</b>	11,582	3,925	<b>15,397</b>	11,564	3,833
	May	<b>15,494</b>	11,467	4,027	<b>15,384</b>	11,452	3,932

(1): Claimants include all those on the benefit, while recipients only include claimants who are in receipt of payment

(2): Incapacity Benefit was introduced on 13th April 1995, replacing Sickness and Invalidation benefit



## C2 Severe Disablement Allowance claimants and recipients by start of spell

	Quarter ending	SDA claimants <sup>(1)</sup>			SDA recipients <sup>(1)</sup>		
		Total	Pre 13th <sup>(2)</sup>	Post 13th <sup>(2)</sup>	Total	Pre 13th <sup>(2)</sup>	Post 13th <sup>(2)</sup>
			April '95 cases	April '95 cases		April '95 cases	April '95 cases
1996	Feb	14,812	95.8%	4.2%	14,684	96.0%	4.0%
	May	14,901	94.3%	5.7%	14,784	94.6%	5.4%
	Aug	15,045	92.5%	7.5%	14,892	93.0%	7.0%
	Nov	15,239	90.4%	9.6%	15,077	90.9%	9.1%
1997	Feb	15,306	89.1%	10.9%	15,177	89.5%	10.5%
	May	15,400	87.7%	12.3%	15,278	88.1%	11.9%
	Aug	15,504	86.1%	13.9%	15,376	86.6%	13.4%
	Nov	15,559	84.9%	15.1%	15,449	85.4%	14.6%
1998	Feb	15,579	83.9%	16.1%	15,470	84.3%	15.7%
	May	15,589	83.0%	17.0%	15,502	83.3%	16.7%
	Aug	15,612	82.0%	18.0%	15,498	82.4%	17.6%
	Nov	15,689	80.3%	19.7%	15,520	81.0%	19.0%
1999	Feb	15,629	80.1%	19.9%	15,514	80.6%	19.4%
	May	15,593	79.7%	20.3%	15,509	80.1%	19.9%
	Aug	15,571	79.2%	20.8%	15,494	79.4%	20.6%
	Nov	15,507	78.5%	21.5%	15,407	78.9%	21.1%
2000	Feb	15,463	77.8%	22.2%	15,366	78.2%	21.8%
	May	15,470	76.9%	23.1%	15,352	77.4%	22.6%
	Aug	15,458	76.3%	23.7%	15,355	76.7%	23.3%
	Nov	15,489	75.5%	24.5%	15,385	75.8%	24.2%
2001	Feb	15,507	74.7%	25.3%	15,397	75.1%	24.9%
	May	15,494	74.0%	26.0%	15,384	74.4%	25.6%

(1): Claimants include all those on the benefit, while recipients only include claimants who are in receipt of payment

(2): Incapacity Benefit was introduced on 13th April 1995, replacing Sickness and Invalidity benefit



**C3 Number of claimants and recipients of Severe  
Disablement Allowance at 31 May 2001  
by age, sex, and commencement of benefit**

	All SDA		SDA Pre 13 April 1995		SDA Post 13 April 1995	
	Claimants	Recipients	Claimants	Recipients	Claimants	Recipients
<b>All Persons</b>						
<b>All Ages</b>	<b>15,494</b>	15,384	11,467	11,452	4,027	3,932
Under 20	<b>1,095</b>	899	318	316	609	583
20 - 24	<b>1,327</b>	1,789	1,028	1,025	777	764
25 - 29	<b>1,458</b>	1,510	1,216	1,216	299	294
30 - 34	<b>1,646</b>	1,536	1,301	1,299	242	237
35 - 39	<b>1,560</b>	1,546	1,213	1,213	345	333
40 - 44	<b>1,474</b>	1,487	1,154	1,151	347	336
45 - 49	<b>1,643</b>	1,613	1,305	1,304	320	309
50 - 54	<b>1,721</b>	1,632	1,305	1,304	338	328
55 - 59	<b>1,196</b>	1,360	949	946	416	414
60 - 64	<b>1,765</b>	1,925	1,678	1,678	247	247
65 and over	<b>87</b>	87	0	0	87	87
<b>Men</b>						
All Ages	<b>6,834</b>	6,779	5,041	5,036	1,793	1,743
Under 20	<b>535</b>	521	170	170	365	351
20 - 24	<b>976</b>	967	564	563	412	404
25 - 29	<b>841</b>	839	684	684	157	155
30 - 34	<b>862</b>	860	739	739	123	121
35 - 39	<b>749</b>	742	591	591	158	151
40 - 44	<b>656</b>	647	523	521	133	126
45 - 49	<b>610</b>	604	508	508	102	96
50 - 54	<b>533</b>	530	441	441	92	89
55 - 59	<b>481</b>	478	355	353	126	125
60 - 64	<b>558</b>	558	466	466	92	92
65 and over	<b>33</b>	33	0	0	33	33
<b>Women</b>						
All Ages	<b>8,660</b>	8,605	6,426	6,416	2,234	2,189
Under 20	<b>392</b>	378	148	146	244	232
20 - 24	<b>829</b>	822	464	462	365	360
25 - 29	<b>674</b>	671	532	532	142	139
30 - 34	<b>681</b>	676	562	560	119	116
35 - 39	<b>809</b>	804	622	622	187	182
40 - 44	<b>845</b>	840	631	630	214	210
45 - 49	<b>1,015</b>	1,009	797	796	218	213
50 - 54	<b>1,110</b>	1,102	864	863	246	239
55 - 59	<b>884</b>	882	594	593	290	289
60 and over	<b>1,421</b>	1,421	1,212	1,212	209	209



**C4 Number of terminations of Severe Disablement Allowance  
in the period 1 June 2000 to 31 May 2001, by age and reason**

	All cases	Closed certificate	Death of claimant	At request of claimant	Other reason *
<b>All Persons</b>	<b>503</b>	<b>42</b>	<b>326</b>	<b>22</b>	<b>113</b>
<b>All Ages</b>					
Under 20	41	9	7	5	20
20 - 24	57	8	10	7	32
25 - 29	35	8	9	2	16
30 - 34	22	5	9	2	6
35 - 39	27	6	10	2	9
40 - 44	26	0	14	2	10
45 - 49	35	2	25	0	8
50 - 54	30	2	19	1	8
55 - 59	46	1	41	1	3
60 - 64	57	1	55	0	1
65 and over	127	0	127	0	0

\* Other reason includes failure to attend medical, failure to provide information, and not incapable (own occ. / PCA).



### C5 Number of claimants and recipients of Severe Disablement Allowance at 31 May 2001, by District Council

	Claimants	Recipients	Population aged 16 and over *	Recipients as % of Population
<b>All Persons</b>				
<b>All Cases</b>	<b>15,494</b>	<b>15,384</b>	<b>1,289,600</b>	<b>1.19%</b>
Ards	465	465	56,700	0.82%
Belfast	2,632	2,610	216,900	1.20%
Castlereagh	428	427	53,000	0.81%
Down	618	616	47,700	1.29%
Lisburn	788	779	84,300	0.92%
North Down	562	560	60,600	0.92%
Antrim	705	701	39,000	1.80%
Ballymena	442	436	46,400	0.94%
Ballymoney	258	257	19,800	1.30%
Carrickfergus	287	287	29,700	0.97%
Coleraine	417	414	43,700	0.95%
Cookstown	290	289	24,000	1.20%
Larne	226	226	24,300	0.93%
Magherafelt	364	363	28,400	1.28%
Moyle	182	180	11,900	1.51%
Newtownabbey	528	527	63,600	0.83%
Armagh	605	595	41,100	1.45%
Banbridge	318	318	31,300	1.02%
Craigavon	656	652	60,500	1.08%
Dungannon	469	466	35,700	1.31%
Newry & Mourne	918	912	63,600	1.43%
Derry	1,066	1,053	77,000	1.37%
Fermanagh	552	548	43,300	1.27%
Limavady	287	286	23,500	1.22%
Omagh	544	536	35,300	1.52%
Strabane	476	472	28,300	1.67%
Missing postcode	411	409	..	..

Note: Approximately 2% of records on the May 2001 dataset had missing or invalid postcodes, without which district council cannot be assigned.

\* = Mid 2000 estimates. Population aged 16 and over

.. = Not available



**C6 Number of recipients of Severe Disablement Allowance  
at 31 May 2001 by dependency**

	All Persons	Men	Women
<b>All Persons</b>			
<b>All Cases</b>	<b>15,384</b>	<b>6,779</b>	<b>8,605</b>
No Dependants	15,124	6,629	8,495
Adult Dependant only	46	41	5
Adult and:			
1 child	10	9	1
2 children	13	13	0
3 children	4	4	0
4 children	5	3	2
5 or more children	3	3	0
No Adult and:			
1 child	92	32	60
2 children	48	20	28
3 children	22	13	9
4 children	10	9	1
5 or more children	7	3	4
Total number of children	414	237	177

Note: Table does not reflect actual dependency status of all IB claimants, but only those who have declared dependants for benefit purposes.

**C7 Number of Severe Disablement Allowance recipients at  
31 May 2001 by total weekly amounts in payment**

	Number of Recipients	Total weekly amount paid £	Average weekly amount paid £
All in receipt of SDA	15,384	821,363	53.39
Of which:			
In receipt of Age Related Addition	15,321	196,017	12.79



**C8 Number of claimants of Severe Disablement Allowance at 31 May 2001, by reason exempt from Personal Capability Assessment**

---

	<b>All Persons</b>
<b>All Exempt</b>	<b>14,835</b>
DLA High Care rate	1,302
Severe Sickness	1,529
Other reason <sup>(1)</sup>	422
In receipt of SDA at 12.4.95	11,582

---

(1) other reason includes terminally ill and SDA passports



**C9 Number of claimants of Severe Disablement Allowance at  
31 May 2001, by Diagnosis Group \***

	All SDA	% of all SDA	Men	Women
<b>All Cases</b>	<b>15,494</b>	<b>100.0%</b>	<b>6,834</b>	<b>8,660</b>
Claimants without any diagnosis code on the system	5	0.0%	3	2
Certain infectious and Parasitic Diseases (A00 - B99)	62	0.4%	22	40
Neoplasms (C00 - D48)	124	0.8%	39	85
Diseases of the Blood and Blood forming organs and certain diseases involving the immune mechanism (D50 - D89)	16	0.1%	6	10
Endocrine, Nutritional and Metabolic Diseases (E00 - E90)	151	1.0%	55	96
Mental and Behavioural Disorders (F00 - F99)	6,104	39.4%	3,047	3,057
Diseases of the Nervous System (G00 - G99)	1,560	10.1%	638	922
Diseases of the Eye and Adnexa (H00 - H59)	227	1.5%	94	133
Diseases of the Ear and Mastoid Process (H60 - H95)	161	1.0%	61	100
Disease of the Circulatory System (I00 - I99)	766	4.9%	261	505
Diseases of the Respiratory System (J00 - J99)	382	2.5%	98	284
Diseases of the Digestive System (K00 - K93)	111	0.7%	37	74
Diseases of the Skin and Subcutaneous System (L00 - L99)	54	0.3%	15	39
Diseases of the Musculoskeletal system and Connective Tissue (M00 - M99)	1,437	9.3%	309	1,128
Diseases of the Genitourinary System (N00 - N99)	84	0.5%	31	53
Pregnancy, Childbirth and the Puerperium (O00 - O99)	7	0.0%	2	5
Certain Conditions Originating in the Perinatal Period (P00 - P96)	0	0.0%	0	0
Congenital Malformations, Deformations and Chromosomal Abnormalities (Q00 - Q99)	1,075	6.9%	583	492
Symptoms, Signs and Abnormal Clinical and Laboratory findings, not elsewhere classified (R00 - R99)	2,200	14.2%	950	1,250
Injury, Poisoning and certain other consequences of external causes (S00 - U22)	338	2.2%	210	128
Factors influencing Health Status and Contact with Health Services (Z00 - Z99)	630	4.1%	373	257

\*Diagnosis Group is taken from ICD10 published by the World Health Organisation.



**C10 Number of claimants of Severe Disablement  
Allowance at 31 May 2001, by age, sex,  
and duration of benefit**

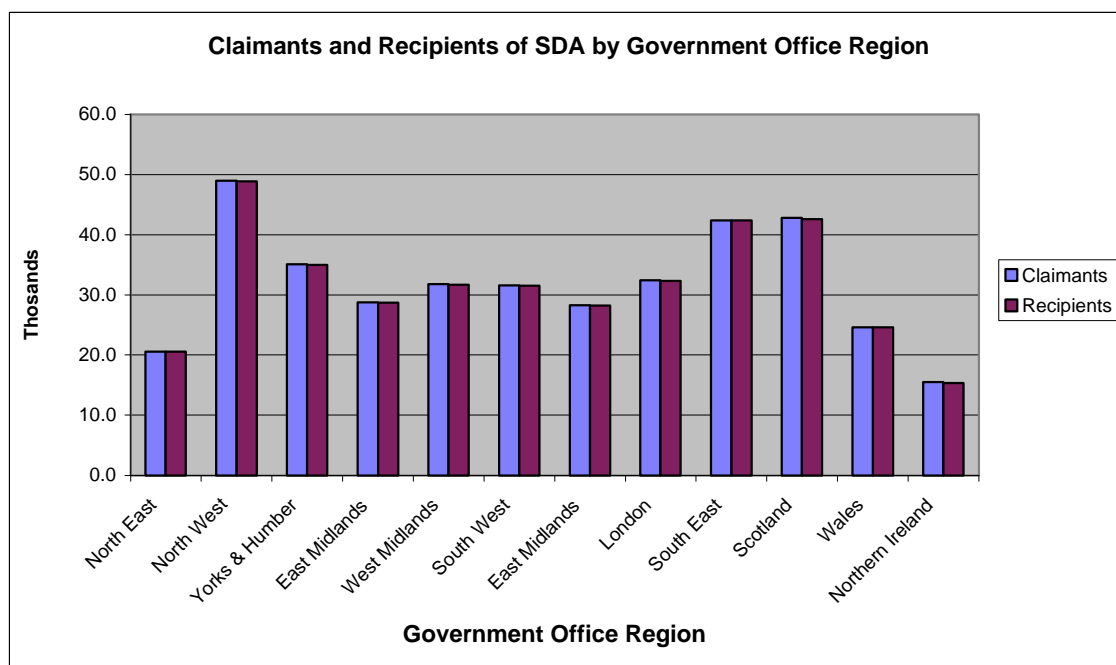
	<b>All IB</b>	Under 3 months	3 to under 6 months	6 to under 12 months	1 to under 2 years	2 to under 4 years	4 years and over
<b>All Persons</b>							
All Ages	<b>15,494</b>	<b>34</b>	<b>95</b>	<b>278</b>	<b>633</b>	<b>1,240</b>	<b>13,214</b>
Under 20	<b>609</b>	5	43	116	195	249	1
20-24	<b>1,095</b>	7	8	24	91	243	722
25-29	<b>1,327</b>	3	6	13	34	90	1181
30-34	<b>1,458</b>	1	4	16	22	73	1342
35-39	<b>1,646</b>	5	6	26	64	93	1452
40-44	<b>1,560</b>	1	4	17	54	98	1386
45-49	<b>1,474</b>	4	8	17	48	83	1314
50-54	<b>1,643</b>	2	8	21	41	101	1470
55-59	<b>1,721</b>	0	3	21	52	117	1528
60-64	<b>1,196</b>	6	4	5	27	66	1088
65 and over	<b>1,765</b>	0	1	2	5	27	1730
<b>Men</b>							
All Ages	<b>6,834</b>	<b>15</b>	<b>42</b>	<b>142</b>	<b>277</b>	<b>552</b>	<b>5,806</b>
Under 20	<b>365</b>	3	22	77	104	159	0
20-24	<b>582</b>	4	3	13	49	124	389
25-29	<b>721</b>	1	5	7	13	46	649
30-34	<b>807</b>	1	1	6	12	40	747
35-39	<b>897</b>	1	1	13	28	40	814
40-44	<b>724</b>	1	1	6	19	33	664
45-49	<b>625</b>	2	3	5	13	25	577
50-54	<b>600</b>	2	2	7	11	20	558
55-59	<b>567</b>	0	2	6	15	32	512
60-64	<b>447</b>	0	1	1	12	23	410
65 and over	<b>499</b>	0	1	1	1	10	486
<b>Women</b>							
All Ages	<b>8,660</b>	<b>19</b>	<b>53</b>	<b>136</b>	<b>356</b>	<b>688</b>	<b>7,408</b>
Under 20	<b>244</b>	2	21	39	91	90	1
20-24	<b>513</b>	3	5	11	42	119	333
25-29	<b>606</b>	2	1	6	21	44	532
30-34	<b>651</b>	0	3	10	10	33	595
35-39	<b>749</b>	4	5	13	36	53	638
40-44	<b>836</b>	0	3	11	35	65	722
45-49	<b>849</b>	2	5	12	35	58	737
50-54	<b>1,043</b>	0	6	14	30	81	912
55-59	<b>1,154</b>	0	1	15	37	85	1016
60 and over	<b>2,015</b>	6	3	5	19	60	1922



**C11 Number of claimants and recipients of Severe Disablement Allowance at 31 May 2001 by Government Office Region**

Thousands

	Claimants	Recipients
<b>All Persons</b>		
<b>All Cases (Great Britain)</b>	<b>367.7</b>	<b>366.7</b>
North East	20.6	20.6
North West	49.0	48.9
Yorks & Humber	35.1	35.0
East Midlands	28.8	28.7
West Midlands	31.8	31.7
South West	31.6	31.5
East Midlands	28.3	28.2
London	32.4	32.3
South East	42.4	42.4
England	299.8	299.1
Scotland	42.8	42.6
Wales	24.6	24.6
Northern Ireland	15.5	15.4
Overseas	0.5	0.4*



**ISBN 1-904105-01-7**