

**Department for Social Development**

**Income Support  
Summary Statistics**

**DSD**

Department for  
Social Development

**November 2002**



**A Government Statistical Publication**

**Published by*****Statistics & Research Branch***

Department for Social Development  
Room 3 Block 4,  
The Village, Stormont,  
Belfast, BT4 3SJ

Telephone: 02890 5/23339  
GTN (440) 23339  
Fax: 02890 5/22763  
e-mail: [srb@dndni.gov.uk](mailto:srb@dndni.gov.uk)

ISSN 1475-5777

Further Statistics for Northern Ireland relating to Social Security Benefits can be obtained by visiting our website;

<http://www.dndni.gov.uk/statistics-research/introduction.asp>

Statistics relating to Social Security Benefits in Great Britain can be obtained by visiting the following website;

<http://www.dss.gov.uk/asd/online.html>



## Contents

<b>GLOSSARY OF TERMS AND CONVENTIONS.....</b>	<b>4</b>
<b>SUMMARY .....</b>	<b>5</b>
<b>SECTION 1        CASELOAD-KEY CHARACTERISTICS AND AVERAGE PAYMENTS .....</b>	<b>6</b>
<b>SECTION 2        LENGTH OF TIME ON IS.....</b>	<b>13</b>
<b>SECTION 3        MAIN CLAIMANT GROUPS .....</b>	<b>16</b>
<b>SECTION 4        CLAIMANTS, PARTNERS AND DEPENDANTS .....</b>	<b>20</b>
<b>SECTION 5        PREMIUM PAYMENTS .....</b>	<b>22</b>
<b>SECTION 6        CLAIMANTS IN RESIDENTIAL CARE AND NURSING HOMES (RCNH) .....</b>	<b>26</b>
<b>SECTION 7        DISTRICT COUNCIL AND SOCIAL SECURITY OFFICE ANALYSES.....</b>	<b>28</b>
<b>SECTION 8        UNITED KINGDOM ANALYSES.....</b>	<b>35</b>
<b>ANNEX 1:        TECHNICAL DETAILS.....</b>	<b>39</b>
<b>ANNEX 2:        SAMPLING ERRORS.....</b>	<b>40</b>
<b>ANNEX 3:        MAIN CHANGES TO BENEFIT RULES.....</b>	<b>41</b>
<b>ANNEX 4:        PERSONAL ALLOWANCES AND RATES OF PREMIUM .....</b>	<b>43</b>
<b>INDEX.....</b>	<b>45</b>



## Glossary of Terms and Conventions

### Glossary of Terms

#### ***Couple***

Two persons either married or living together as husband and wife

#### ***Dependant***

A person who is not a partner and whose resources and requirements are included with those of the claimant

#### ***Duration of claim***

Duration of current period in receipt of Income Support

#### ***Family Type***

Single or couple, with or without dependants

#### ***Lone Parent***

A single parent aged under 60 and not in the disabled group

#### ***Partner***

One of a married or unmarried couple living together

#### ***Single***

A claimant who is not living as one of a couple

#### ***Single Parent***

A claimant without a partner but with one or more dependants

#### ***Statistical Group***

The main groups of claimants

### **Conventions**

IS	Income Support
JSA	Jobseekers Allowance
£pw	Pounds per week
£million	Millions of pounds
QSE	Quarterly Statistical Enquiry
RCNH	Residential Care Nursing Homes
GOR	Government Office Region
-	Numbers are too small to be statistically reliable
<i>Italics</i>	Counts in italics are not statistically reliable



## Summary

Income Support (IS) is a means-tested benefit, intended to provide for basic living expenses for an individual and their family. A customer can claim for self, partner and any dependent children under the age of 19, providing they are not able to claim in their own right. Only one person in the family can be the primary customer at one time. The main types of people who receive IS are pensioners, lone parents, long and short-term sick, people with disabilities and other special groups.

Prior to October 1996, unemployed people or those on a government training scheme could claim IS, but now claim Jobseekers Allowance (JSA). In order for valid comparisons to be drawn of the IS population before and after the introduction of JSA, unemployed IS claimants and those on government training schemes have been excluded from those tables which show data prior to November 1997.

IS is made up of a personal allowance, a premium payment and where applicable help in meeting accommodation costs. The personal allowance provides money for normal expenses for the customer (and partner and dependants if appropriate). Premium payments are extra payments for groups of people whose expenses are likely to be higher than normal. The maximum amount that a customer can receive is normally reduced by any amount of income they have from most other benefits or other sources.



## Section 1 Caseload-key characteristics and average payments

### Summary

The opening section of this report looks at the IS caseload and the average amount of benefit in payment per week (Table 1.3). Breakdowns according to certain key characteristics (statistical group, age, gender) are also given, although more detailed information is given in more specialised sections later in the report.

Between November 2001 and November 2002 the IS caseload has grown by approximately 1.2% and now stands at 178,660 at November 2002. The total number of IS claimants was higher in November 2002 than at any other time in the preceding six years (178,660 claimants in November 2002 and 158,560 at May 1996). In contrast, in GB the total number of IS claimants has fallen slightly in the same time period, with the total number of claimants at November 2002 standing at 3,961,000 compared to 3,963,000 at May 1996.

A large proportion of this increase was due to the increased number of claimants receiving a disability premium or those aged 60 or over. This effect was also seen in GB. Between November 2001 and November 2002 the disabled statistical group in Northern Ireland increased by approximately 4% to 54,160 claimants (30.3% of the total caseload) compared to the GB disabled statistical group increasing by approximately 4% to 1,086,000 claimants (27.4% of the total caseload). Similarly, in the statistical group aged 60 or over, between November 2001 and November 2002 this group in Northern Ireland increased by approximately 1.5% to 78,800 claimants (44.1% of the total caseload) compared to the GB group aged 60 or over increasing by approximately 1.6% to 1,768,000 claimants (44.6% of the total caseload).

The Lone Parent group has shown a decrease in both the numbers claiming IS and the proportion of the total IS caseload. The number of lone parent claimants has fallen from 30,680 in November 2001 to 29,580 in November 2002, with the average weekly payment for this group rising from £103.76 to £111.25. This group has the highest average weekly payment of IS. The number of claimants in the 'Other' statistical group has decreased slightly between November 2001 and November 2002 (16,200 to 16,120) and makes up 9% of the IS caseload.

Generally, claimants with dependants receive a higher weekly payment of IS compared to those without dependants, irrespective of marital status. At November 2002, for example, a single claimant without dependants received on average £54.80 per week, compared to £117.08 received by a single person with dependants. Amongst couples, those without dependants received on average £70.88 per week, while those with dependants received on average £138.11 per week.

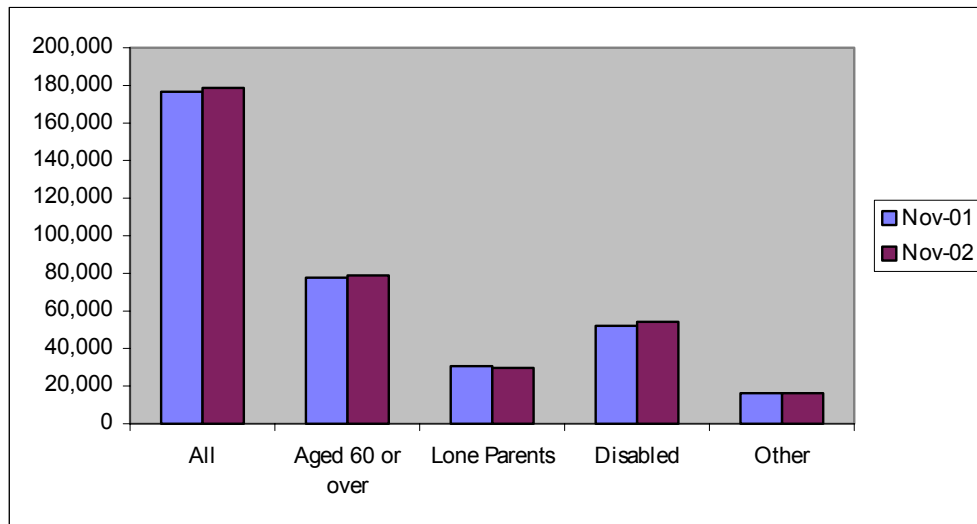


The largest number of male IS claimants lies in the 25-59 year age bracket, followed by the 60 years or over age bracket (39,360 and 29,280 respectively at November 2002). The largest number of females is in the 60 years and over age bracket, closely followed by the 25-59 year age bracket (48,740 and 47,600 respectively at November 2002).



**Table 1.1 Income Support claimants by statistical group: November 2001 to November 2002**

	All Claimants	Statistical group			
		Aged 60 or over	Lone Parents	Disabled	Other
Nov-01	<b>176,600</b>	77,660	30,680	52,060	16,200
Feb-02	<b>176,500</b>	77,640	30,680	52,640	15,540
May-02	<b>176,280</b>	77,720	29,960	53,180	15,420
Aug-02	<b>178,080</b>	78,360	30,360	52,920	16,440
Nov-02	<b>178,660</b>	78,800	29,580	54,160	16,120

**Chart 1A Income Support claimants by statistical group: November 2001 and November 2002****Table 1.2 Income Support claimants by statistical group: November 2001 to November 2002**

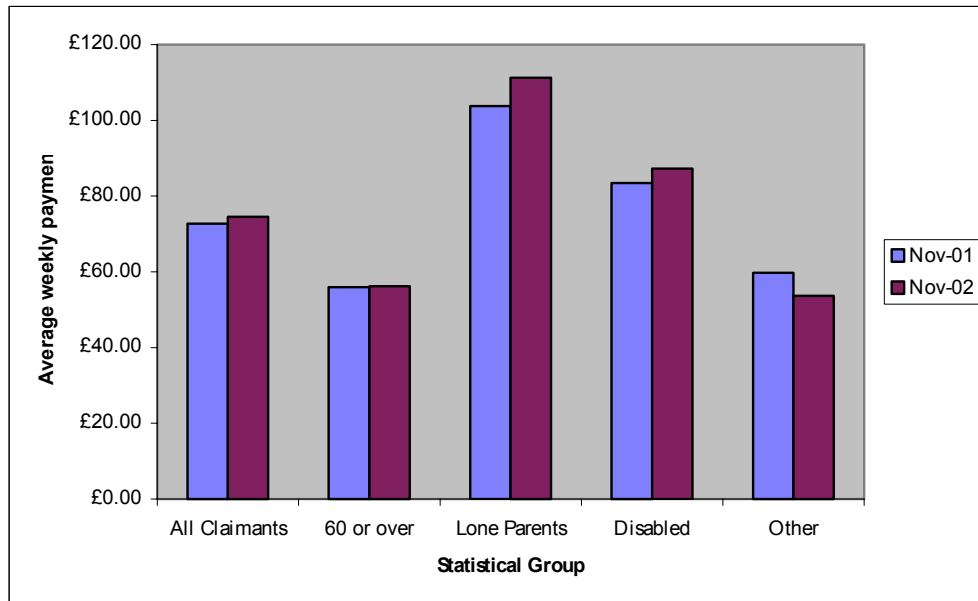
	All Claimants	Statistical group			
		% Aged 60 or over	% Lone Parents	% Disabled	% Other
Nov-01	<b>100%</b>	44%	17%	29%	9%
Feb-02	<b>100%</b>	44%	17%	30%	9%
May-02	<b>100%</b>	44%	17%	30%	9%
Aug-02	<b>100%</b>	44%	17%	30%	9%
Nov-02	<b>100%</b>	44%	17%	30%	9%



**Table 1.3 Average weekly payments made to Income Support claimants by statistical group: November 2001 to November 2002 (£pw)**

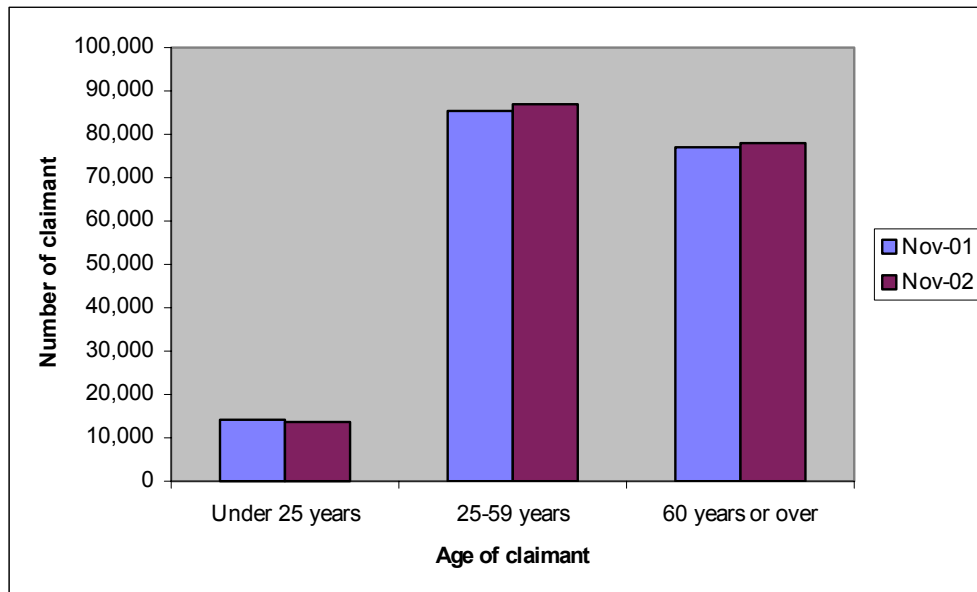
	All Claimants	Statistical group			
		Aged 60 or over	Lone Parents	Disabled	Other
Nov-01	<b>£72.72</b>	£55.99	£103.76	£83.43	£59.79
Feb-02	<b>£72.62</b>	£55.35	£103.55	£83.71	£60.30
May-02	<b>£73.41</b>	£57.06	£105.71	£85.02	£53.02
Aug-02	<b>£73.32</b>	£56.69	£105.45	£85.86	£52.86
Nov-02	<b>£74.51</b>	£56.20	£111.25	£87.29	£53.64

**Chart 1B Average weekly payments made to Income Support claimants by statistical group: November 2001 and November 2002**



**Table 1.4 Income Support claimants by age and gender: November 2001 to November 2002**

	All Claimants	All males			All females		
		Under 25 years	25-59	60 or over	Under 25 years	25-59	60 or over
Nov-01	<b>176,600</b>	4,440	37,760	27,720	9,720	47,680	49,280
Feb-02	<b>176,500</b>	4,380	37,480	28,080	9,700	47,880	48,980
May-02	<b>176,280</b>	4,240	37,640	28,560	9,780	47,640	48,420
Aug-02	<b>178,080</b>	4,120	38,560	28,860	10,040	47,760	48,740
Nov-02	<b>178,660</b>	4,080	39,360	29,280	9,600	47,600	48,740

**Chart 1C Income Support claimants by age: November 2001 and November 2002****Table 1.5 Average weekly payments made to Income Support claimants by age and gender: November 2001 to November 2002 (£pw)**

	All Claimants	All males			All females		
		Under 25 years	25-59	60 or over	Under 25 years	25-59	60 or over
Nov-01	<b>£72.72</b>	£45.83	£78.81	£61.71	£78.91	£96.58	£52.37
Feb-02	<b>£72.62</b>	£47.27	£79.25	£61.19	£78.79	£96.70	£51.62
May-02	<b>£73.41</b>	£50.40	£78.34	£63.18	£80.09	£97.06	£53.00
Aug-02	<b>£73.32</b>	£49.96	£78.36	£62.83	£81.16	£97.32	£52.38
Nov-02	<b>£74.51</b>	£54.04	£79.07	£61.88	£84.95	£101.01	£52.18

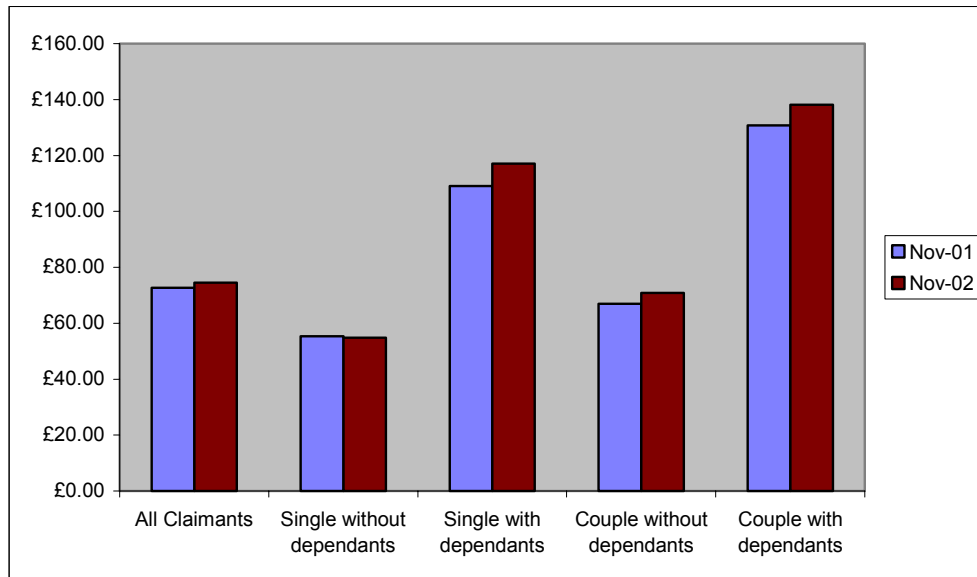


**Table 1.6 Income Support claimants by family type: November 2001 to November 2002**

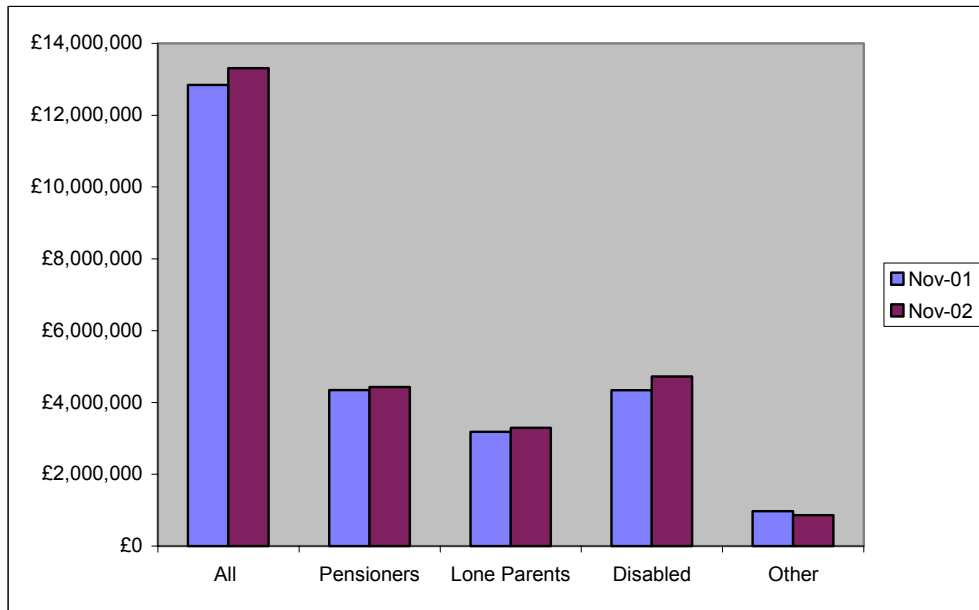
	All Claimants	Single without dependants	Single with dependants	Couples without dependants	Couples with dependants
Nov-01	176,600	108,180	38,660	19,640	10,120
Feb-02	176,500	107,600	38,680	20,000	10,220
May-02	176,280	108,020	37,980	19,980	10,300
Aug-02	178,080	108,840	38,420	20,340	10,480
Nov-02	178,660	110,260	37,420	20,680	10,300

**Table 1.7 Average weekly payments made to Income Support claimants by family type: November 2001 to November 2002 (£pw)**

	All Claimants	Single without dependants	Single with dependants	Couples without dependants	Couples with dependants
Nov-01	£72.72	£55.38	£109.03	£66.94	£130.66
Feb-02	£72.62	£55.18	£108.87	£66.69	£130.65
May-02	£73.41	£54.91	£111.35	£71.26	£131.65
Aug-02	£73.32	£54.63	£110.99	£71.60	£132.63
Nov-02	£74.51	£54.80	£117.08	£70.88	£138.11

**Chart 1D Average weekly payments made to Income Support claimants by family type: November 2001 and November 2002**

**Chart 1E Estimated Total Weekly Expenditure on Income Support by group (Last week in November): 2001 and 2002**



## Section 2 Length of time on IS

### Summary

This section examines the length of time customers spend on IS with respect to their key characteristics (Table 2.2, 2.3). A comparison over time is also given (Table 2.1).

Duration data may have an indication of changes in the flow of claimants on and off benefit. A sudden increase in the number of claimants on benefit indicates that more individuals are flowing into the benefit than leaving and may lead to a rise in the number of claimants having relatively short spells of benefit receipt. On the other hand, an increase that occurs over a longer period of time may be due to claimants having longer spells of benefit receipt, reflected in longer durations on benefit.

### Main Findings

While the overall numbers claiming IS has increased between November 2001 and November 2002, the proportion of claimants receiving benefit for the duration periods of under 3 months and 3 to under 6 months have also increased (4.1% to 4.3% and 3.8% to 4% respectively). This increase suggests a slight up-turn in the number of new applicants over the last year. Approximately 72% of all IS claimants have been in receipt of the benefit for at least 2 years since 1997. Claimants in the statistical group aged 60 or over were most likely to have spent the longest time on IS in November 2002 (83.2% had a claim which lasted 2 years or over) whilst those in the 'other' group were likely to have spent the shortest time (35.7% had made their claim in the 6 months to November 2002).

The majority of claimants over 25 have been in receipt of IS for 2 years or more. Older claimants (over 60), both male and female, are the most likely to have spent the longest time on Income Support. At November 2002 81.2% of males in this age bracket had a claim lasting 2 Years or longer, while 84.5% of females in this age group had a claim of this duration. Those aged under 25 claiming IS at November 2002 also tended to be claiming benefit for longer durations although, when compared with other age groups, more young claimants were claiming for less than 3 months (15.2% males under 25 and 9% of females under 25 at November 2002).

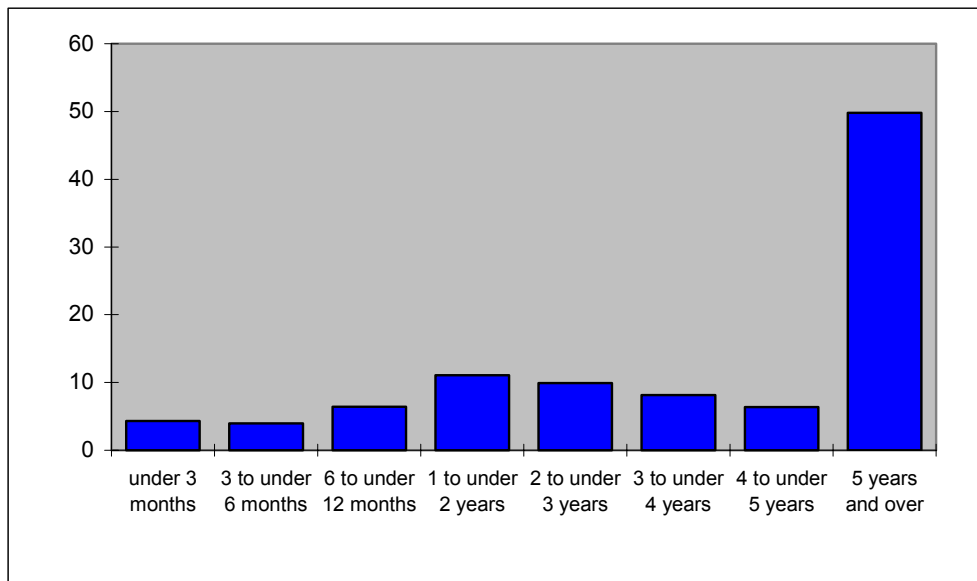
Claimants with longer claim durations were more likely to receive higher amounts of benefit than those claimants with shorter claim durations in November 2002. 39.8% of those with a duration of 2 years or more received £80 or more per week compared with only 29.7% for those with a duration of under 3 months.



**Table 2.1 Income Support claimants by duration of current claim:  
November 2001 to November 2002**

<b>Duration</b>	<b>Nov 2001</b>	<b>Feb 2002</b>	<b>May 2002</b>	<b>Aug 2002</b>	<b>Nov 2002</b>
<b>All claimants</b>	<b>176,600</b>	<b>176,500</b>	<b>176,280</b>	<b>178,080</b>	<b>178,660</b>
% under 3 months	4.1%	2.9%	3.8%	3.9%	4.3%
% 3 to under 6 months	3.8%	4.6%	3.7%	4.1%	4.0%
% 6 to under 12 months	7.3%	6.9%	6.7%	6.6%	6.4%
% 1 to under 2 years	12.7%	12.6%	12.3%	11.3%	11.1%
% 2 to under 3 years	9.3%	9.5%	9.5%	10.0%	9.9%
% 3 to under 4 years	7.4%	7.3%	7.8%	7.7%	8.2%
% 4 to under 5 years	7.1%	7.2%	6.9%	6.6%	6.4%
% 5 years and over	48.2%	48.9%	49.4%	49.8%	49.8%

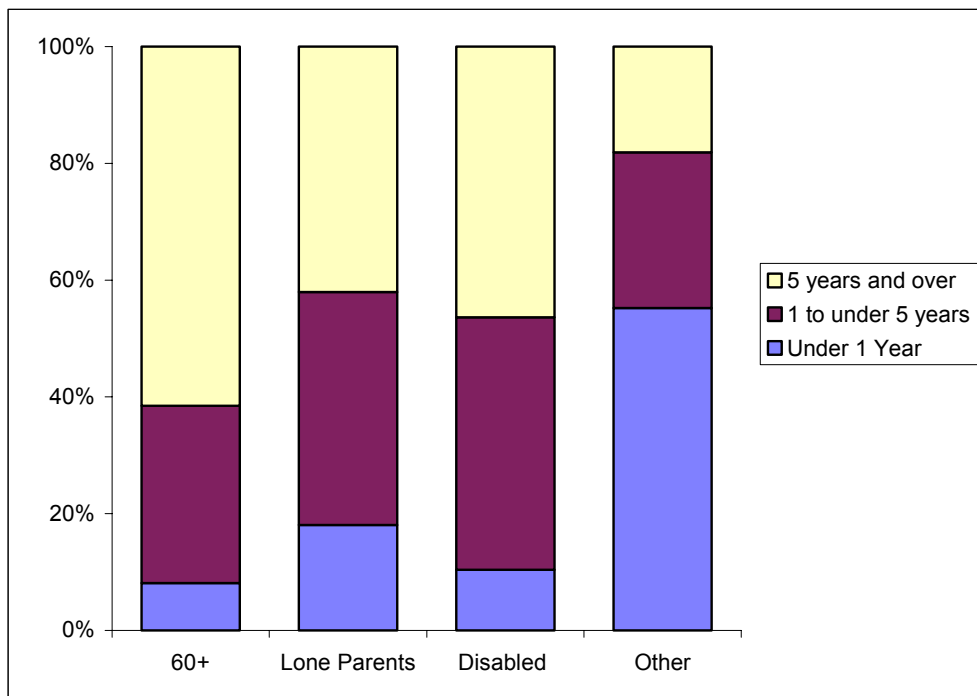
**Chart 2A Income Support claimants by duration of current claim:  
November 2002**



**Table 2.2 Income Support claimants by duration of current claim and statistical group: November 2002**

	All Claimants	Statistical group			
		Aged 60 or over	Lone Parents	Disabled	Other
Total	178,660	78,800	29,580	54,160	16,120
% under 3 months	4.3	2.1	5.3	2.6	19.2
% 3 to under 6 months	4.0	2.3	4.2	2.6	16.5
% 6 to under 12 months	6.4	3.7	8.6	5.2	19.5
% 1 to under 2 years	11.1	8.7	13.3	14.0	8.9
% 2 to under 3 years	9.9	9.5	9.9	11.2	7.8
% 3 to under 4 years	8.2	6.4	9.1	10.8	6.2
% 4 to under 5 years	6.4	5.9	7.5	7.3	3.7
% 5 years and over	49.8	61.5	42.1	46.4	18.1

**Table 2B: Income Support claimants by duration of current claim and statistical group: November 2002**



**Table 2.3 Income Support claimants by duration of current claim, age and gender: November 2002**

Age/ Gender	All Claimants	Duration				
		% Under 3 Months	% 3 months to under 6 months	% 6 months to under 1 year	% 1 year to under 2 years	% 2 years or over
<b>Total</b>	<b>178,660</b>	<b>4.3</b>	<b>4.0</b>	<b>6.4</b>	<b>11.1</b>	<b>74.2</b>
<b>Male</b>	<b>72,720</b>	<b>5.6</b>	<b>4.6</b>	<b>7.6</b>	<b>12.1</b>	<b>70.2</b>
Under 18	300	40.0	13.3	20.0	26.7	-
18-24	3,780	13.2	13.2	18.0	24.3	31.2
25-59	39,360	6.6	6.0	8.5	12.6	66.2
60 and Over	29,280	2.9	1.4	4.8	9.8	81.2
<b>Female</b>	<b>105,940</b>	<b>3.5</b>	<b>3.5</b>	<b>5.6</b>	<b>10.3</b>	<b>77.0</b>
Under 18	500	24.0	20.0	24.0	32.0	-
18-24	9,100	8.1	8.6	14.7	23.1	45.5
25-59	47,600	4.2	3.2	6.3	10.0	76.2
60 and Over	48,740	1.7	2.7	3.0	8.0	84.5

**Table 2.4 Income Support claimants by duration of current claim and range of weekly IS payment: November 2002**

Age/ Gender	All Claimants	Duration				
		% Under 3 Months	% 3 months to under 6 months	% 6 months to under 1 year	% 1 year to under 2 years	% 2 years or over
<b>All amounts</b>	<b>178,660</b>	<b>7,740</b>	<b>7,080</b>	<b>11,420</b>	<b>19,780</b>	<b>132,640</b>
Under £10	3.4	7.0	13.6	6.8	6.3	1.9
£10 to under £30	16.0	9.6	13.3	11.7	13.5	17.3
£30 to under £40	7.9	7.2	5.6	8.2	8.8	7.9
£40 to under £50	6.7	14.2	13.0	9.3	5.9	5.8
£50 to under £70	17.6	27.4	22.6	17.5	13.9	17.4
£70 to under £80	9.8	4.9	7.3	7.4	13.4	9.9
£80 to under £100	14.2	12.1	11.9	15.4	15.7	14.1
£100 or over	24.3	17.6	12.7	23.6	22.5	25.7
Average amount £ per week	74.51	64.41	57.50	71.63	74.14	76.31



### **Section 3 Main claimant groups**

#### **Summary**

This section looks at the main claimant groups within the overall caseload (60 or over, disabled, lone parents and “others”). Claimants are allocated to groups based firstly upon entitlement to pensioner or disability premiums, and then to the lone parent group if they are single with dependants and not already classed as a pensioner or disabled.

Eligibility for the pensioner or disability premium November be based on either the claimant’s or their partner’s circumstances. For example, a 59-year-old claimant with a 62-year-old partner would receive a pensioner premium. Some claimants are eligible for more than one of these premiums but their benefit is assessed using only the one that gives them the highest allowance. They are therefore allocated to statistical groups in the following order: pensioner, disabled, lone parent and “other” (i.e. not in one of the other groups). There are several rates of pensioner premium that can be paid to people in the 60 or over group, depending upon age and disability.

This section presents a set of tables for each group, and identifies key claimant characteristics.

#### **Main Findings**

Females in the aged 60 or over statistical group tended to be older than the male claimants in this category, which is also the trend in the general population. In November 2002, 37.3% (18,280) of these women were aged 80 years or over compared to just 15.5% (4,600) of men. Those aged 60-64 accounted for 35.8% of males in this premium group, while only 13% were in this age bracket for females. This age distribution is broadly similar to that in Great Britain at this time, with 32.1% of males and 12.1% of females falling into the 60-64 years age bracket.

Disabled IS claimants were mainly in the 25-59 age range at November 2002, a situation which has remained relatively unchanged since 1995. 56.9% (30,800) of IS claimants receiving the disability were male, 43.1% (23,360) female. This is mirrored in Great Britain where the percentages are 54.8% male and 45.2% female.

The majority of lone parents were female (94.9%) and concentrated mainly in the 25-59 year old age band. This is again mirrored in Great Britain.

The number of ‘other’ claimants fell slightly from 16,200 in November 2001 to 16,120 in November 2002. There continues to be almost twice as many males than females in this category (10,680 and 5,440 respectively). This distribution is mirrored in GB, with 61.1% (162,000) of ‘other’ claimants being male and 38.9% (103,000) female at November 2002.



**Table 3.1 Income Support claimants receiving a Pensioner premium<sup>1</sup> by age and gender: November 2001 to November 2002**

<b>Age/ Gender</b>	Nov-01	Feb-02	May-02	Aug-02	Nov-02
<b>Total</b>	<b>77,660</b>	<b>77,640</b>	<b>77,720</b>	<b>78,360</b>	<b>78,800</b>
<b>Male</b>	<b>28,080</b>	<b>28,400</b>	<b>28,920</b>	<b>29,340</b>	<b>29,740</b>
60-64	9,680	9,680	9,920	10,380	10,660
65-74	10,640	10,760	10,980	10,860	10,960
75-79	3,220	3,380	3,340	3,400	3,520
80 or over	4,540	4,580	4,680	4,700	4,600
<b>Female</b>	<b>49,580</b>	<b>49,240</b>	<b>48,800</b>	<b>49,020</b>	<b>49,060</b>
60-64	6,080	6,140	6,080	6,280	6,380
65-74	15,140	14,940	14,840	14,700	14,640
75-79	9,740	9,640	9,380	9,480	9,760
80 or over	18,620	18,520	18,500	18,560	18,280

<sup>1</sup> This includes cases where the claimant/partner is aged 60 or over

<sup>2</sup> 60-64 age band includes claimants aged under 60 where there is a partner aged 60 or over/ in receipt of a pensioner premium

**Table 3.2 Income Support claimants in receipt of a Disability premium by age and gender: November 2001 to November 2002**

<b>Age/ Gender</b>	Nov-01	Feb-02	May-02	Aug-02	Nov-02
<b>Total</b>	<b>52,060</b>	<b>52,640</b>	<b>53,180</b>	<b>52,920</b>	<b>54,160</b>
<b>Male</b>	<b>29,760</b>	<b>30,040</b>	<b>30,240</b>	<b>29,960</b>	<b>30,800</b>
Under 18	200	140	-	100	120
18-24	2,340	2,440	2,040	1,920	2,040
25-59	27,220	27,460	28,120	27,940	28,640
<b>Female</b>	<b>22,300</b>	<b>22,600</b>	<b>22,940</b>	<b>22,960</b>	<b>23,360</b>
Under 18	140	140	100	100	140
18-24	1,940	1,820	1,680	1,600	1,580
25-59	20,220	20,640	21,160	21,260	21,640



**Table 3.3 Income Support claimants in receipt of a Lone Parent premium by age and gender: November 2001 to November 2002**

<b>Age/ Gender</b>	Nov-01	Feb-02	May-02	Aug-02	Nov-02
<b>Total</b>	<b>30,680</b>	<b>30,680</b>	<b>29,960</b>	<b>30,360</b>	<b>29,580</b>
<b>Male</b>	<b>1,560</b>	<b>1,600</b>	<b>1,440</b>	<b>1,460</b>	<b>1,500</b>
<b>Female</b>	<b>29,120</b>	<b>29,080</b>	<b>28,520</b>	<b>28,900</b>	<b>28,080</b>
Under 18	240	200	160	220	260
18-24	6,260	6,420	6,280	6,680	6,400
25-59	22,620	22,460	22,080	22,000	21,420

**Table 3.4 "Other" Income Support claimants by age and gender: November 2001 to November 2002**

<b>Age/ Gender</b>	Nov-01	Feb-02	May-02	Aug-02	Nov-02
<b>Total</b>	<b>16,200</b>	<b>15,540</b>	<b>15,420</b>	<b>16,440</b>	<b>16,120</b>
<b>Male</b>	<b>10,520</b>	<b>9,900</b>	<b>9,840</b>	<b>10,780</b>	<b>10,680</b>
Under 18	140	200	280	140	180
18-24	1,680	1,560	1,760	1,920	1,680
25-59	8,700	8,140	7,800	8,720	8,820
<b>Female</b>	<b>5,680</b>	<b>5,640</b>	<b>5,580</b>	<b>5,660</b>	<b>5,440</b>
Under 18	140	200	260	240	100
18-24	1,000	920	1,300	1,200	1,120
25-59	4,540	4,520	4,020	4,220	4,220



## **Section 4 Claimants, partners and dependants**

### **Summary**

In this section beneficiaries of IS are classified by type (claimant, partner or dependant). Data is given according to the age and number of dependants of the claimant (Table 4.2). Income Support November be claimed by either member of a couple, but only one person in the family can be the primary customer at any one time. In other words a customer claims on behalf of themselves, their partner and any dependent children. Entitlement to IS takes account of the claimant and partner's circumstances and is based on a personal allowance, plus allowances for a partner and any dependent children.

### **Main Findings**

In comparison to November 2001 the proportion of the population who are beneficiaries of IS (i.e. a claimant, partner or dependant) has decreased slightly from 18.1% to 18% in November 2002. This proportion of the population in GB at November 2002 is 11.8%. Historical data for this proportion is unavailable due to the revision of population estimates for GB.

The proportion of IS claimants having a partner from November 2001 to November 2002 has increased slightly from 16.9% to 17.3%. Similarly, in GB the proportion has increased from 14.5% to 14.8% over the same period.

The average number of dependants of an IS claimant in Northern Ireland at November 2002 was 2.0 which compares to 1.9 in GB. The highest average number of dependants was found in the 25-34 and 35-49 year old age bands in Northern Ireland (2.2 dependants at November 2002). The highest average number of dependants was mirrored in the 25-34 year old GB age band (2.1 dependants at November 2002).



**Table 4.1 Beneficiaries of Income Support by type: November 2001 to November 2002**

	All Beneficiaries	Type of beneficiary			Beneficiaries as % of population
		Claimant	Partner	Dependant	
Nov-01	<b>304,120</b>	176,600	29,760	97,760	18.1%
Feb-02	<b>304,140</b>	176,500	30,220	97,420	18.0%
May-02	<b>303,620</b>	176,280	30,280	97,060	18.0%
Aug-02	<b>306,840</b>	178,080	30,820	97,940	18.2%
Nov-02	<b>303,700</b>	178,660	30,980	94,060	18.0%

**Table 4.2 Income Support claimants by age and number of dependants: November 2002**

	Total	Age of Claimant					
		Under 18	18 to 24	25 to 34	35 to 49	50 to 59	60 or over
<b>All claimants</b>	<b>178,660</b>	<b>800</b>	<b>12,880</b>	<b>24,420</b>	<b>40,340</b>	<b>22,200</b>	<b>78,020</b>
Claimants without deps	<b>130,940</b>	540	5,600	9,820	19,160	18,500	77,320
Claimants with deps	<b>47,720</b>	260	7,280	14,600	21,180	3,700	700
Number of Deps							
1	<b>20,560</b>	260	5,400	4,800	7,200	2,460	440
2	<b>14,840</b>	0	1,540	5,160	7,000	960	180
3	<b>7,620</b>	0	320	2700	4320	220	-
4	<b>3,240</b>	0	-	1480	1660	-	-
5	<b>1,040</b>	0	0	320	720	0	0
6 or more	<b>420</b>	0	0	140	280	0	0
Average number of dependants	<b>2.0</b>	1.0	1.3	2.2	2.2	1.4	1.5



## **Section 5 Premium payments**

### **Summary**

Where it is recognised that a customer has special needs, an additional amount, known as a premium is awarded. The allocation of claimants to statistical groups is governed by the premiums mentioned in Section 3, i.e. pensioner premiums, disability premium and lone parent premium. Of these premiums, claimants benefit from one giving the highest allowance. Other types of premiums e.g. severe disability, caring responsibilities, may be paid in combination with these.

This section gives a breakdown of the IS caseload by the type of premium which a claimant is receiving (Table 5.1). The claimants are subsequently further classified, firstly by family type (Table 5.2) and then by statistical group (Table 5.3).

A comparison over time is given.

### **Main Findings**

The premium structure of Income Support is designed for those claimants who have extra expenses. The majority of IS claimants in November 2002 received extra help in this way (170,380 claimants, 95.4% of the total IS caseload). The proportion of claimants receiving one or more premiums has consistently been above 90% since 1996. In Northern Ireland the average number of premiums per claimant has risen from 1.51 per claimant in November 2001 to 1.52 in November 2002. In GB the average number of premiums per claimant has risen to 1.4 after having been 1.3 premiums per claimant over the last five years.

The number of premiums awarded in Northern Ireland has increased by 1.9% from November 2001 to November 2002 which compares to an increase of 2.9% in GB. The number of premiums linked to disability and age (the various rates of pensioner premium) in Northern Ireland has shown increases from November 2001 to November 2002, 2.2% and 2.7% respectively. In GB the increases for disability and age are 4.7% and 3.6% respectively.

Single claimants without dependants were mostly in receipt of pensioner premiums, premiums linked with disabilities and the carer premium, but 7.3% of this group were not in receipt of any premium. The situation was similar in GB, with 7.4% of this group not receiving any premium. Claimants with dependants, irrespective of marital status, were in receipt of at least one IS premium.

Those receiving the severe disability (lower and higher rate) premium were mainly in the aged 60 or over statistical group, the remainder falling into the disabled category. The majority of claimants receiving a premium for a disabled child were in the lone parent statistical group, followed by claimants in the disabled and other groups.



**Table 5.1 Income Support premiums by type and number: November 2001 to November 2002**

Type of premium	Nov 2001	Feb 2002	May 2002	Aug 2002	Nov 2002
<b>All types</b>	<b>266,660</b>	<b>268,260</b>	<b>268,360</b>	<b>270,160</b>	<b>271,760</b>
Higher pensioner premium					
Claimant/partner aged 80 or over	23,560	23,640	24,000	24,160	23,700
Claimant/partner aged 60-79	38,400	38,320	38,780	39,260	39,980
Enhanced pensioner premium	3,400	3,460	3,460	3,460	3,700
Pensioner premium	12,020	12,100	12,100	12,240	12,060
Severe Disability premium - higher	3,980	4,220	4,140	4,300	4,240
Severe Disability premium - lower	43,580	43,620	43,460	43,880	44,840
Disability Premium	52,060	52,680	53,180	52,940	54,140
Enhanced disability premium	11,660	11,780	11,300	11,320	11,300
Disabled child premium	5,040	4,900	4,900	4,860	4,760
Enhanced disabled child premium	2,520	2,360	2,380	2,260	2,180
Family Premium(lone parent)*	15,440	15,140	14,320	14,000	13,160
Family Premium*	33,340	33,760	33,920	34,880	34,520
Carer Premium	21,660	22,280	22,420	22,600	23,180
Claimants not in receipt of an IS premium	9,440	8,680	7,820	8,780	8,280
Claimants with 1 or more premiums	167,160	167,820	168,460	169,300	170,380
Average number of premiums	1.51	1.52	1.52	1.52	1.52

\*As from April 1997 the Lone Parent Premium was amalgamated with the Family Premium to form a single higher rate Family premium for Lone Parents

\*From April 1998 the Family Premium (Lone Parent) was abolished, although those in receipt at that time continue to receive it until a relevant change of circumstances



**Table 5.2 Income Support claimants with premiums by family and premium type: November 2002**

Type of premium	Single Claimants		Couples		
	With Dependants	Without Dependants	With Dependants	Without Dependants	
<b>All premiums</b>	<b>271,760</b>	<b>59,740</b>	<b>150,760</b>	<b>27,680</b>	<b>33,580</b>
Higher Pensioner Premium					
Claimant/partner aged 80 or over	23,700	0	21,760	0	1,940
Claimant/partner aged 60-79	39,980	100	27,980	480	11,420
Enhanced pensioner premium	3,700	0	3,460	0	240
Pensioner premium	12,060	-	9,520	180	2,300
Severe Disability premium-higher	4,240	0	0	280	3,960
Severe Disability premium - lower	44,840	3,960	40,240	-	580
Disability Premium	54,140	7,680	33,640	7,460	5,360
Enhanced disability premium	11,300	1,300	6,860	1,600	1,540
Disabled child premium	4,760	3,220	0	1,540	0
Enhanced disabled child premium	2,180	1,440	0	740	0
Family Premium(lone parent)*	13,160	13,160	0	0	0
Family Premium*	34,520	24,240	0	10,280	0
Carer Premium	23,180	4,580	7,300	5,060	6,240
Claimants with 1 or more premiums	170,380	37,420	102,160	10,300	20,500
Claimants with no premium	8,280	0	8,100	0	180
Average number of premiums	1.52	1.60	1.37	2.69	1.62

\*As from April 1997 the Lone Parent Premium was amalgamated with the Family Premium to form a single higher rate Family premium for Lone Parents

\*From April 1998 the Family Premium (Lone Parent) was abolished, although those in receipt at that time continue to receive it until a relevant change of circumstances



**Table 5.3 Income Support claimants premiums by type and statistical group of claimant: November 2002**

Type of premium	All Claimants	Statistical Group			
		Aged 60 or over	Lone Parents	Disabled	Other
<b>All premiums</b>	<b>271,760</b>	<b>118,060</b>	<b>37,260</b>	<b>106,180</b>	<b>10,260</b>
Higher pensioner premium					
Claimant/partner aged 80 or over	<b>23,700</b>	23,700	0	0	0
Claimant/partner aged 60-79	<b>39,980</b>	39,980	0	0	0
Enhanced pensioner premium	<b>3,700</b>	3,700	0	0	0
Pensioner premium	<b>12,060</b>	12,060	0	0	0
Severe disability premium - higher	<b>4,240</b>	3,600	0	640	0
Severe disability premium - lower	<b>44,840</b>	29,580	0	15,260	0
Disability Premium	<b>54,140</b>	0	0	54,140	0
Enhanced disability premium	<b>11,300</b>	0	0	11,300	0
Disabled child premium	<b>4,760</b>	-	2,540	1,620	560
Enhanced disabled child premium	<b>2,180</b>	-	1,040	740	360
Family Premium(lone parent) <sup>1,2</sup>	<b>13,160</b>	0	13,160	0	0
Family Premium <sup>1,2</sup>	<b>34,520</b>	820	16,420	15,120	2,160
Carer Premium	<b>23,180</b>	4,540	4,100	7,360	7,180
Claimants with 1 or more premiums	<b>170,380</b>	78,460	29,580	54,160	8,180
Claimants with no premium	<b>8,280</b>	340*	0	0	7,940
Average number of premiums	1.52	1.50	1.26	1.96	0.64

<sup>1</sup>As from April 1997 the Lone Parent Premium was amalgamated with the Family Premium to form a single higher rate Family premium for Lone Parents

<sup>2</sup>From April 1998 the Family Premium (Lone Parent) was abolished, although those in receipt at that time continue to receive it until a relevant change of circumstances

\*Those aged 60 or over without premiums are in Residential Care/Nursing Homes



## **Section 6 Claimants in residential care and nursing homes (RCNH)**

### **Summary**

As well as the categories of IS claimants previously mentioned, there are individuals whose entitlement to IS takes into account special circumstances. A large proportion of these cases is made up of individuals receiving care in residential care or nursing homes (Table 6.1).

The date on which a customer entered a residential care nursing home determines the rules by which their entitlement to IS is assessed.

People who entered homes prior to April 1993 qualified for help with their fees directly through IS payments. These fees could be met in full or up to a maximum limit, depending on the type of care required. Those who were still in residential care nursing homes after the introduction of the new scheme in April 1993 had preserved rights to IS payments under the old scheme (this includes those who were not claiming at the point of the change, but have since done so). From 8<sup>th</sup> April 2002 preserved rights cases were abolished and are now the financial responsibility of the Local Authorities.

The amount of IS received by people who entered residential homes after April 1993 is assessed on a broadly similar basis to people living in their own homes and does not depend directly on the fees for care. This means they are entitled to IS premiums. Their assessment also contains a residential allowance (RA) to assist with the recognised extra accommodation costs incurred.

### **Main Findings**

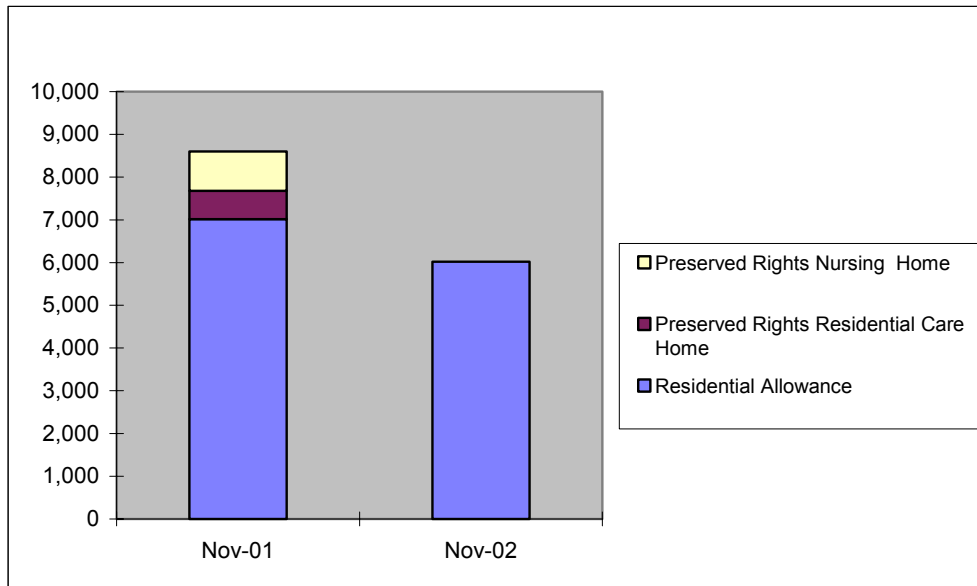
Due to the abolition of preserved rights cases from 8<sup>th</sup> April 2002, the number of preserved rights cases has fallen to zero. The number of Residential allowance cases during the period from November 2001 until November 2002 has decreased from 7,360 to 6,020. The overall number of RCNH claimants has shown a decrease from 8,940 in November 2001 to 6,020 in November 2002. Currently RCNH cases make up 3.4% of the total IS caseload in Northern Ireland. In contrast, the equivalent GB percentage stands at 4.4%.



**Table 6.1 Income Support claimants in residential care and nursing homes: November 2001 to November 2002**

	All	Residential allowance	Preserved Rights		
			All	Residential care home	Nursing home
Nov-01	<b>8,940</b>	7,360	1,580	660	920
Feb-02	<b>8,560</b>	7,120	1,440	620	820
May-02	<b>6,980</b>	6,980	0	0	0
Aug-02	<b>6,420</b>	6,420	0	0	0
Nov-02	<b>6,020</b>	6,020	0	0	0

**Chart 6A Income Support claimants in residential care and nursing homes by type of care: November 2001 and November 2002**



## Section 7 District Council and Social Security Office analyses

### Summary

A breakdown of the IS caseload is given by District Council and Social Security Office, comparing data from November 2001 to November 2002 (Tables 7.1 and 7.4). The caseload is also split by statistical group (Tables 7.2 and 7.5) and a distribution of IS beneficiaries given (Tables 7.3 and 7.6).

The highest numbers of claimants were found in the Belfast, Derry and Newry & Mourne district councils. The lowest numbers of claimants were found in Moyle and Ballymoney district councils. When taken as a percentage of the population aged 16 and over, the highest proportion of claimants was in the Derry district council (19.4%), closely followed by Belfast (19.3% of the population). The lowest proportion of claimants aged 16 and over is in the Castlereagh district council (6.3% of population) followed by North Down (7.7% of the population).

Similarly, in regard to beneficiaries as a percentage of total population, the highest proportion of claimants is in Derry district council (25.8%), closely followed by Belfast (25.2%) and Newry & Mourne (23.8%). The lowest proportion of beneficiaries is in the Castlereagh district council (7.6%) followed by North Down (9.5% of the population) and Banbridge (9.7%). Overall 18% of the population in Northern Ireland were beneficiaries of IS, compared to 11.8% in GB.

Corporation Street Social Security Office had the largest share of the IS caseload with 11,100 claimants (6.2% of the caseload) at November 2002, while Kilkeel had only 1,420 claimants (0.8% of the caseload) at the same point in time. Andersonstown and Lisnagelvin experienced the largest increases in claimant numbers between November 2001 and November 2002. Similarly Falls Road and Knockbreda experienced the largest claimant decreases during this period.

In Magherafelt and Ballymena 55.2% of the caseload consisted of claimants aged 60 or over, while this category of claimant only accounted for 29.2% of the caseload in Foyle. Newcastle had the highest proportion of lone parents in comparison to Kilkeel which had the lowest (29.2% and 9.9% respectively at November 2002). In regard to the disabled claimants, Strabane had the highest proportion while Ballymena had the lowest proportion (37.3% and 21% respectively).

The highest number IS beneficiaries was found in the Foyle Social Security Office (20,940 beneficiaries at November 2002) the lowest number being in Kilkeel (2,740 beneficiaries at November 2002).

**Table 7.1 Northern Ireland Income Support claimants by District Council:  
November 2001 to November 2002**

<b>District Council</b>	<b>Nov 2001</b>	<b>Feb 2002</b>	<b>May 2002</b>	<b>August 2002</b>	<b>Nov 2002</b>
Antrim	4,080	4,040	4,100	4,120	4,220
Ards	5,040	4,980	4,980	4,880	5,060
Armagh	4,560	4,600	4,480	4,460	4,620
Ballymena	4,260	4,360	4,320	4,300	4,300
Ballymoney	2,220	2,340	2,360	2,400	2,320
Banbridge	2,480	2,460	2,600	2,620	2,600
Belfast	42,060	41,900	41,900	42,080	41,820
Carrickfergus	2,300	2,360	2,360	2,320	2,440
Castlereagh	3,580	3,320	3,280	3,360	3,280
Coleraine	5,080	5,100	5,160	5,240	5,240
Cookstown	4,300	4,260	4,180	4,120	4,140
Craigavon	8,380	8,320	8,460	8,680	8,880
Derry	14,820	14,920	14,940	15,000	15,000
Down	5,180	5,260	5,000	5,040	5,020
Dungannon	6,220	6,260	6,340	6,340	6,440
Fermanagh	6,540	6,540	6,580	6,640	6,580
Larne	2,380	2,400	2,280	2,340	2,360
Limavady	3,160	3,300	3,460	3,580	3,520
Lisburn	8,800	8,820	8,840	8,860	8,700
Magherafelt	3,980	3,860	3,840	3,800	3,920
Moyle	1,780	1,840	1,760	1,920	2,020
Newry&Mourne	11,240	11,280	11,560	11,620	11,440
Newtownabbey	5,740	5,800	5,600	5,980	6,040
North Down	4,980	4,720	4,620	4,780	4,740
Omagh	5,300	5,420	5,300	5,380	5,440
Strabane	5,480	5,360	5,120	5,240	5,260
Missing Postcode *	2,660	2,680	2,860	2,980	3,260
<b>All Claimants</b>	<b>176,600</b>	<b>176,500</b>	<b>176,280</b>	<b>178,080</b>	<b>178,660</b>

In producing this analysis, individual records were attributed on the basis of their postcode. Not all records can be correctly allocated to a ward using this method, and some cannot be allocated at all. Past investigation has demonstrated that mis-allocations and non-allocations do not necessarily occur randomly between areas, and at ward level, the proportion of records mis-allocated or unallocated can be substantial. At present it seems likely that a higher than average proportion of the records that can not be attributed to a ward are in the following areas: Fermanagh District Council, Derry District Council and parts of Belfast City Council.



**Table 7.2 Northern Ireland Income Support claimants by Statistical group and District Council: November 2002**

District Council	All Claimants 100%	Statistical group				Claimants as a percentage of the population <sup>1</sup>
		Aged 60 or over %	Lone Parents %	Disabled %	Other %	
Antrim	4,220	47.9%	13.3%	31.3%	7.6%	11.4%
Ards	5,060	48.6%	13.0%	30.4%	7.9%	8.7%
Armagh	4,620	54.1%	12.6%	26.0%	7.4%	11.3%
Ballymena	4,300	54.0%	16.3%	22.8%	7.0%	9.4%
Ballymoney	2,320	53.4%	16.4%	25.0%	5.2%	11.2%
Banbridge	2,600	52.3%	13.8%	21.5%	12.3%	8.2%
Belfast	41,820	39.6%	18.9%	31.1%	10.3%	19.3%
Carrickfergus	2,440	37.7%	18.9%	36.1%	7.4%	8.3%
Castlereagh	3,280	51.2%	14.6%	25.0%	9.1%	6.3%
Coleraine	5,240	46.6%	16.0%	28.2%	9.2%	11.9%
Cookstown	4,140	49.8%	10.1%	33.8%	6.3%	17.1%
Craigavon	8,880	44.6%	14.0%	30.9%	10.6%	14.6%
Derry	15,000	32.1%	21.9%	35.3%	10.7%	19.4%
Down	5,020	41.4%	19.1%	31.9%	7.6%	10.4%
Dungannon	6,440	44.1%	13.7%	32.9%	9.3%	18.1%
Fermanagh	6,580	55.9%	10.6%	27.1%	6.4%	15.0%
Larne	2,360	46.6%	13.6%	27.1%	12.7%	9.8%
Limavady	3,520	39.2%	15.3%	33.0%	12.5%	14.4%
Lisburn	8,700	42.1%	21.8%	29.9%	6.2%	10.6%
Magherafelt	3,920	59.7%	10.7%	22.4%	7.1%	13.3%
Moyle	2,020	50.5%	19.8%	16.8%	12.9%	16.6%
Newry&Mourne	11,440	43.0%	13.5%	33.7%	9.8%	17.8%
Newtownabbey	6,040	47.4%	18.5%	26.5%	7.6%	9.6%
North Down	4,740	55.7%	12.7%	27.4%	4.2%	7.7%
Omagh	5,440	48.5%	13.6%	29.8%	8.1%	15.2%
Strabane	5,260	42.2%	12.2%	36.1%	9.5%	18.5%
Missing Postcode*	3,260	32.5%	29.4%	28.8%	9.2%	
<b>All Claimants</b>	<b>178,660</b>	<b>44%</b>	<b>17%</b>	<b>30%</b>	<b>9%</b>	<b>13.8%</b>

<sup>1</sup> Population aged 16 and over

\*In producing this analysis, individual records were attributed on the basis of their postcode. Not all records can be correctly allocated to a ward using this method, and some cannot be allocated at all. Past investigation has demonstrated that mis-allocations and non-allocations do not necessarily occur randomly between areas, and at ward level, the proportion of records mis-allocated or unallocated can be substantial. At present it seems likely that a higher than average proportion of the records that can not be attributed to a ward are in the following areas: Fermanagh District Council, Derry District Council and parts of Belfast City Council.



**Table 7.3 Northern Ireland Beneficiaries of Income Support by type and District Council: November 2002**

District Council	All Beneficiaries	Type of beneficiary			Beneficiaries as a percentage of the population <sup>1</sup>
		Claimant	Partner	Dependant	
Antrim	6,980	4,220	580	2,180	14.3%
Ards	8,200	5,060	880	2,260	11.2%
Armagh	7,320	4,620	920	1,780	13.4%
Ballymena	7,060	4,300	600	2,160	12.0%
Ballymoney	4,000	2,320	520	1,160	14.8%
Banbridge	4,020	2,600	460	960	9.7%
Belfast	69,720	41,820	5,320	22,580	25.2%
Carrickfergus	4,220	2,440	400	1,380	11.2%
Castlereagh	5,040	3,280	560	1,200	7.6%
Coleraine	8,100	5,240	840	2,020	14.4%
Cookstown	7,320	4,140	1,220	1,960	22.4%
Craigavon	15,820	8,880	1,900	5,040	19.5%
Derry	27,160	15,000	2,540	9,620	25.8%
Down	8,820	5,020	780	3,020	13.7%
Dungannon	10,900	6,440	1,360	3,100	22.8%
Fermanagh	10,560	6,580	1,460	2,520	18.3%
Larne	3,880	2,360	520	1,000	12.6%
Limavady	6,180	3,520	720	1,940	18.9%
Lisburn	15,900	8,700	1,300	5,900	14.6%
Magherafelt	6,720	3,920	920	1,880	16.8%
Moyle	3,400	2,020	320	1,060	21.3%
Newry&Mourne	20,820	11,440	2,460	6,920	23.8%
Newtownabbey	9,900	6,040	1,100	2,760	12.4%
North Down	7,280	4,740	840	1,700	9.5%
Omagh	8,760	5,440	1,100	2,220	18.2%
Strabane	8,900	5,260	960	2,680	23.3%
Missing Postcode*	6,720	3,260	400	3,060	
<b>All Claimants</b>	<b>303,700</b>	<b>178,660</b>	<b>30,980</b>	<b>94,060</b>	<b>18.0%</b>

<sup>1</sup> Total Population

In producing this analysis, individual records were attributed on the basis of their postcode. Not all records can be correctly allocated to a ward using this method, and some cannot be allocated at all. Past investigation has demonstrated that mis-allocations and non-allocations do not necessarily occur randomly between areas, and at ward level, the proportion of records mis-allocated or unallocated can be substantial. At present it seems likely that a higher than average proportion of the records that can not be attributed to a ward are in the following areas: Fermanagh District Council, Derry District Council and parts of Belfast City Council.



**Table 7.4 Income Support claimants by Social Security Office: November 2001 to November 2002**

<b>Social Security Office</b>	<b>Nov 2001</b>	<b>Feb 2002</b>	<b>May 2002</b>	<b>Aug 2002</b>	<b>Nov 2002</b>
Andersonstown	7,960	8,060	8,220	8,380	8,300
Antrim	4,820	4,780	4,860	4,920	5,040
Armagh	4,320	4,360	4,320	4,300	4,520
Ballymena	4,880	5,040	4,880	4,840	4,960
Ballymoney	3,860	4,000	4,000	4,220	4,160
Ballynahinch	1,980	2,020	2,000	2,000	1,980
Banbridge	3,000	2,980	3,160	3,160	3,180
Bangor	5,200	5,000	4,880	5,000	5,020
Carrickfergus*					
Coleraine	5,160	5,200	5,260	5,320	5,340
Cookstown	3,700	3,600	3,580	3,540	3,560
Corporation Street	10,980	10,900	11,140	11,100	11,100
Downpatrick	2,700	2,760	2,680	2,640	2,540
Dungannon	5,920	5,920	5,960	5,960	6,000
Enniskillen	7,640	7,640	7,680	7,720	7,680
Falls Road	8,780	8,760	8,520	8,580	8,240
Foyle	10,820	10,840	10,760	10,820	10,820
Hollywood Road	7,580	7,420	7,380	7,660	7,540
Kilkeel	1,420	1,380	1,360	1,420	1,420
Knockbreda	5,060	4,820	4,800	4,680	4,740
Larne	4,660	4,760	4,680	4,640	4,820
Limavady	2,980	3,060	3,200	3,300	3,240
Lisburn	5,200	5,160	5,160	5,240	5,140
Lisnagelvin	5,000	5,100	5,140	5,280	5,320
Lurgan	5,340	5,320	5,380	5,460	5,580
Magherafelt	4,080	4,020	4,000	3,980	4,060
Newcastle	1,340	1,420	1,320	1,380	1,440
Newry	9,320	9,320	9,580	9,580	9,520
Newtownabbey	4,880	4,960	4,780	5,020	5,120
Newtownards	3,940	3,840	3,880	3,820	3,940
Omagh	5,260	5,320	5,160	5,220	5,320
Portadown	4,020	4,040	4,140	4,260	4,320
Shaftesbury Sq.	4,820	4,760	4,780	4,920	5,040
Shankill Road	4,420	4,420	4,280	4,260	4,240
Strabane	5,560	5,500	5,360	5,460	5,420
<b>All Claimants</b>	<b>176,600</b>	<b>176,480</b>	<b>176,280</b>	<b>178,080</b>	<b>178,660</b>

\*Carrickfergus totals combined with Larne SSO from May 1999



**Table 7.5 Income Support claimants by Statistical group and Social Security Office: November 2002**

Social Security Office	All Claimants 100%	Statistical group			
		Aged 60 or over %	Lone Parents %	Disabled %	Other %
Andersonstown	8,300	31.8%	24.6%	32.3%	11.3%
Antrim	5,040	47.2%	12.7%	31.3%	8.7%
Armagh	4,520	54.9%	12.4%	25.2%	7.5%
Ballymena	4,960	55.2%	16.5%	21.0%	7.3%
Ballymoney	4,160	51.9%	14.9%	24.0%	9.1%
Ballynahinch	1,980	52.5%	11.1%	31.3%	5.1%
Banbridge	3,180	51.6%	11.9%	23.3%	13.2%
Bangor	5,020	54.6%	12.0%	28.7%	4.8%
Coleraine	5,340	47.6%	16.9%	27.0%	8.6%
Cookstown	3,560	50.0%	11.2%	31.5%	7.3%
Corporation Street	11,100	37.5%	22.7%	32.4%	7.4%
Downpatrick	2,540	41.7%	19.7%	32.3%	6.3%
Dungannon	6,000	42.0%	14.7%	34.3%	9.0%
Enniskillen	7,680	56.5%	11.2%	26.0%	6.3%
Falls Road	8,240	34.0%	21.6%	32.8%	11.7%
Foyle	10,820	29.2%	25.7%	35.1%	10.0%
Hollywood Road	7,540	46.7%	14.9%	30.0%	8.5%
Kilkeel	1,420	46.5%	9.9%	33.8%	9.9%
Knockbreda	4,740	48.5%	16.0%	28.7%	6.8%
Larne	4,820	42.3%	16.6%	31.5%	9.5%
Limavady	3,240	38.3%	16.0%	32.7%	13.0%
Lisburn	5,140	51.0%	15.6%	26.1%	7.4%
Lisnagelvin	5,320	38.0%	16.2%	33.1%	12.8%
Lurgan	5,580	45.2%	12.2%	31.2%	11.5%
Magherafelt	4,060	55.2%	11.3%	26.6%	6.9%
Newcastle	1,440	33.3%	29.2%	27.8%	9.7%
Newry	9,520	41.0%	14.1%	34.9%	10.1%
Newtownabbey	5,120	47.7%	20.3%	24.6%	7.4%
Newtownards	3,940	49.2%	14.2%	28.4%	8.1%
Omagh	5,320	48.5%	13.2%	30.1%	8.3%
Portadown	4,320	47.7%	15.3%	28.7%	8.3%
Shaftesbury Sq.	5,040	38.9%	14.7%	34.5%	11.9%
Shankill Road	4,240	44.3%	18.4%	25.5%	11.8%
Strabane	5,420	41.0%	12.9%	37.3%	8.9%
<b>All Claimants</b>	<b>178,660</b>	<b>76,460</b>	<b>32,400</b>	<b>50,940</b>	<b>15,620</b>



**Table 7.6 Beneficiaries of Income Support by type and SSO: November 2002**

Social Security Office	All Beneficiaries	Type of beneficiary		
		Claimant	Partner	Dependant
Andersonstown	15,920	8,300	1,240	6,380
Antrim	8,040	5,040	660	2,340
Armagh	7,240	4,520	880	1,840
Ballymena	8,200	4,960	760	2,480
Ballymoney	7,100	4,160	920	2,020
Ballynahinch	3,120	1,980	320	820
Banbridge	5,100	3,180	660	1,260
Bangor	7,800	5,020	920	1,860
Coleraine	8,180	5,340	780	2,060
Cookstown	6,460	3,560	1,100	1,800
Corporation Street	19,600	11,100	1,440	7,060
Downpatrick	4,160	2,540	340	1,280
Dungannon	10,260	6,000	1,280	2,980
Enniskillen	12,480	7,680	1,640	3,160
Falls Road	14,080	8,240	1,160	4,680
Foyle	20,940	10,820	1,700	8,420
Holywood Road	12,200	7,540	1,100	3,560
Kilkeel	2,740	1,420	380	940
Knockbreda	7,360	4,740	500	2,120
Larne	8,160	4,820	940	2,400
Limavady	5,620	3,240	620	1,760
Lisburn	8,520	5,140	800	2,580
Lisnagelvin	8,700	5,320	1,060	2,320
Lurgan	9,980	5,580	1,200	3,200
Magherafelt	7,080	4,060	920	2,100
Newcastle	2,900	1,440	240	1,220
Newry	17,100	9,520	1,860	5,720
Newtownabbey	8,460	5,120	920	2,420
Newtownards	6,580	3,940	720	1,920
Omagh	8,520	5,320	1,100	2,100
Portadown	7,280	4,320	860	2,100
Shaftesbury Sq.	7,620	5,040	460	2,120
Shankill Road	6,920	4,240	540	2,140
Strabane	9,280	5,420	960	2,900
<b>All Claimants</b>	<b>303,700</b>	<b>178,660</b>	<b>30,980</b>	<b>94,060</b>



## **Section 8 United Kingdom analyses**

### **Summary**

A breakdown of the IS caseload is given by Government Office Region (GOR) comparing data from November 1998 to November 2002 (Table 8.1). The caseload is then split by statistical group and GOR at November 2002 (Table 8.2). The average weekly payment of IS by statistical group is given (Table 8.4). The caseload is also given by the duration of the current claim to IS (Table 8.5).

GB data was taken from the November 2002 IS QSE published by the Information and Analysis Directorate of the Department for Work and Pensions.

There has been little change in the distribution of Income Support claimants between Government Office Regions since November 1998. The North West is the GOR with the greatest share of the UK caseload (14% at November 2002) in comparison with Northern Ireland which has the smallest share of the caseload (4.3% at November 2002). The North East has exhibited the largest increase in its share of the caseload, with its share increasing by 0.3% over the period of November 1998 to November 2002.

11.8% of the population in Great Britain were beneficiaries of Income support at November 2002. Among the regions this varied from 7.7% in the South East to 15.6% in the North East. In Northern Ireland 18% of the population were beneficiaries of IS. IS claimants in Northern Ireland were likely to have spent a longer time on benefit at November 2002 (74.2% had a claim with a duration of 2 years or more compared with 69.8% for Great Britain as a whole).



**Table 8.1 Income Support claimants by GOR: November 1998 to November 2002**

GOR	Thousands <sup>1</sup>				
	Nov 1998	Nov 1999	Nov 2000	Nov 2001	Nov 2002
North East	212	218	223	228	231
North West	570	564	570	580	578
Yorks & Humberside	342	347	355	363	364
East Midlands	241	242	243	253	254
West Midlands	364	364	370	382	386
East	267	267	272	277	279
London	575	582	574	571	572
South East	360	355	357	363	364
South West	267	268	271	276	275
Wales	225	229	233	235	235
Scotland	400	399	409	421	425
<b>Great Britain</b>	<b>3,824</b>	<b>3,835</b>	<b>3,877</b>	<b>3,950</b>	<b>3,961</b>
Northern Ireland	168	169	174	177	179

<sup>1</sup> Figures are rounded to the nearest thousand

**Table 8.2 Income Support claimants by GOR and statistical group: November 2002**

GOR	All Claimants (000s) <sup>1</sup>					%
		Aged 60 or over %	Lone Parents %	Disabled %	Other %	Claimants as % of GOR population <sup>2</sup>
North East	231	44.8	19.8	28.0	7.4	11.4
North West	578	42.8	19.8	30.7	6.7	10.8
Yorks & Humberside	364	47.1	19.9	26.1	6.9	9.2
East Midlands	254	47.7	20.0	26.0	6.3	7.6
West Midlands	386	48.5	20.4	24.8	6.3	9.3
East	279	48.1	22.0	24.4	5.6	6.5
London	572	37.2	28.6	26.9	7.3	10.0
South East	364	46.4	23.0	24.8	5.8	5.7
South West	275	48.9	18.6	26.5	6.0	6.9
Wales	235	43.1	19.4	31.2	6.3	10.1
Scotland	425	43.8	17.9	30.4	7.9	10.4
<b>Great Britain</b>	<b>3,961</b>	<b>44.6</b>	<b>21.3</b>	<b>27.4</b>	<b>6.7</b>	<b>8.7</b>
Northern Ireland	179	44.1	16.6	30.3	9.0	13.8

<sup>1</sup> Figures are rounded to the nearest thousand

<sup>2</sup> Aged 16 and over

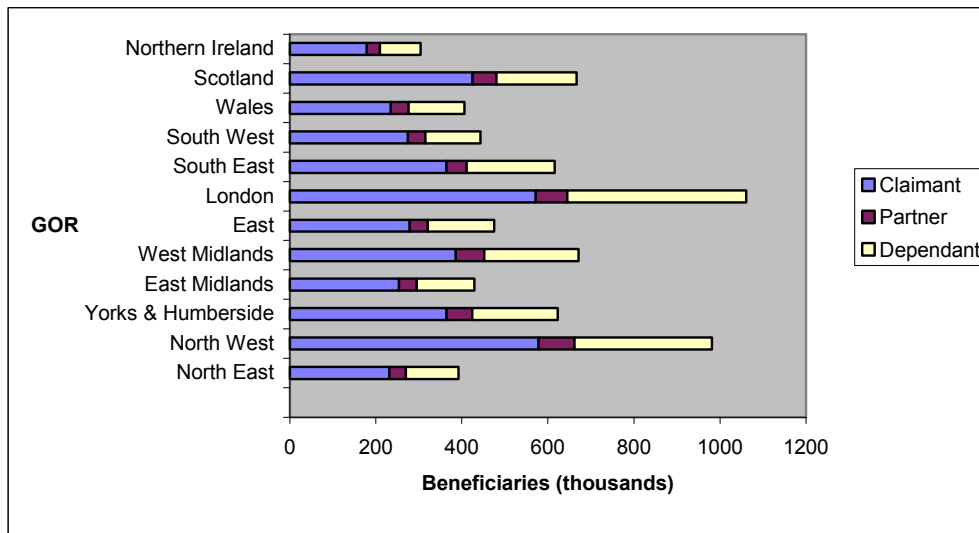


**Table 8.3 Beneficiaries of Income Support by type and GOR: November 2002**

GOR	All	Type of beneficiary			Beneficiaries as % GOR's population
		Claimant	Partner	Dependant	
North East	392	231	39	122	15.6
North West	980	578	84	319	14.6
Yorks & Humberside	623	364	60	199	12.5
East Midlands	429	254	41	134	10.3
West Midlands	671	386	66	219	12.7
East	475	279	42	154	8.8
London	1,061	572	73	416	14.8
South East	616	364	47	205	7.7
South West	443	275	40	128	9.0
Wales	406	235	41	130	14.0
Scotland	667	425	55	187	13.2
<b>Great Britain</b>	<b>6,762</b>	<b>3,961</b>	<b>588</b>	<b>2,212</b>	<b>11.8</b>
Northern Ireland	304	179	31	94	18.0

† Figures are rounded to the nearest thousand

**Chart 8A Beneficiaries of Income Support by type and GOR: November 2002**



**Table 8.4 Average weekly payment of Income Support by GOR and statistical group: November 2002**

GOR	£pw				
	All Claimants	Aged 60 or over	Lone Parents	Disabled	Other
North East	66.41	42.55	108.80	77.19	56.65
North West	70.38	47.20	111.71	79.41	55.16
Yorks & Humberside	68.34	46.12	111.55	77.79	59.45
East Midlands	67.71	46.87	111.00	74.89	58.17
West Midlands	69.06	47.01	112.76	78.37	60.35
East	69.34	47.08	111.70	77.93	57.03
London	85.35	65.11	114.62	88.78	61.47
South East	70.17	47.00	112.21	77.46	58.26
South West	65.85	45.54	110.44	74.78	54.02
Wales	69.62	46.73	111.60	78.51	53.16
Scotland	65.47	46.01	107.26	73.08	49.37
<b>Great Britain</b>	<b>70.84</b>	<b>48.63</b>	<b>111.72</b>	<b>78.72</b>	<b>56.76</b>
Northern Ireland	74.51	56.20	111.25	87.29	53.64

**Table 8.5 Income Support claimants by GOR and duration of current claim: November 2002**

GOR	All Claimants (000s)	Duration of claim				
		% Under 3 Months	% 3 months to under 6 months	% 6 months to under 1 year	% 1 year to under 2 years	% 2 years or over
North East	231	5.2	4.8	8.3	13.1	68.7
North West	578	4.7	4.5	7.2	12.8	70.8
Yorks & Humberside	364	5.4	5.1	8.0	13.1	68.3
East Midlands	254	5.0	5.1	8.5	14.6	66.8
West Midlands	386	4.6	4.9	7.6	13.3	69.5
East	279	5.0	4.8	7.8	13.1	69.3
London	572	3.8	4.3	7.0	11.8	73.0
South East	364	4.7	5.2	7.8	13.4	69.0
South West	275	4.9	4.8	8.0	13.7	68.6
Wales	235	4.6	4.7	7.2	12.7	70.8
Scotland	425	5.2	5.2	7.7	12.4	69.4
<b>Great Britain</b>	<b>3,982</b>	<b>4.8</b>	<b>4.8</b>	<b>7.6</b>	<b>13.0</b>	<b>69.8</b>
Northern Ireland	179	4.3	4.0	6.4	11.1	74.2



## **Annex 1: Technical Details**

### **Income Support Quarterly Statistical Enquiry**

The Income Support Quarterly Statistical Enquiry (QSE) is a sample survey that collects information on the number and characteristics of claimants receiving Income Support in Northern Ireland. The QSE includes all people who are recorded as having entitlement to receive benefit on the enquiry date. This is based on claims held on the Income Support Computer System on that day. It therefore misses claims where entitlement had not been established, but is subsequently backdated.

This publication refers to the QSE conducted on 28<sup>th</sup> November 2002.

The QSE is based on a sample of approximately 5% of the IS population (1 in every 20 IS claimants). The data in each table has been rated up by a factor of 20 to give estimates for the population of IS claimants in Northern Ireland.

The data collected from the QSE is used to provide information to monitor and evaluate IS, answer parliamentary Questions and queries from the public, academics and researchers.

### **Impact of Jobseekers Allowance**

Unemployed claimants or those participating in government training schemes now claim JSA instead of IS. Data that relates to periods prior to the introduction of JSA therefore excludes these claimants.

### **Data sources and validation**

Information in the Northern Ireland QSE is taken directly from the Income Support Computer System, which is used to administer the benefit.

Validation procedures are carried out both by Information and Analysis Directorate and Statistics and Research Branch (Department for Social Development) on the data collected. Amendments are made where it is obvious that some of the information recorded for individual cases is inconsistent e.g. where the recorded statistical group does not match the appropriate premium.



## Annex 2: Sampling Errors

The analyses carried out on the QSE are subject to sampling error. That is, there is a chance that the number of cases in the November sample produces population estimates that are in fact higher or lower than the true value in the population.

The effects of these sampling errors are indicated below in the table of confidence intervals. The figures in this report are the best estimate based on the sample data. The true number will lie in a range around the estimate. The 95% confidence interval means that there is only a 1 in 20 chance that the actual value lies outside this range.

The figures in the table below give the 95% confidence intervals for the true value in the population, based on the estimated value from the 5% sample.

Estimated Value	95% Confidence Interval	Confidence interval as a % of the estimate
100	+/-86	+/-86%
200	+/-121	+/-61%
300	+/-148	+/-49%
400	+/-171	+/-43%
500	+/-191	+/-38%
600	+/-209	+/-35%
700	+/-226	+/-32%
800	+/-242	+/-30%
900	+/-256	+/-28%
1,000	+/-270	+/-27%
2,000	+/-382	+/-19%
3,000	+/-468	+/-16%
4,000	+/-540	+/-14%
5,000	+/-604	+/-12%
6,000	+/-662	+/-11%
7,000	+/-715	+/-10%
8,000	+/-764	+/-10%
9,000	+/-811	+/-9%
10,000	+/-854	+/-9%
20,000	+/-1,208	+/-6%
30,000	+/-1,480	+/-5%
40,000	+/-1,709	+/-4%
50,000	+/-1,910	+/-4%
100,000	+/-2,702	+/-3%
200,000	+/-3,821	+/-2%
300,000	+/-4,679	+/-2%



### Annex 3: Main changes to benefit rules

- Mortgage interest paid direct to lender for most claimants who receive the full amount (November 1992).
- A new scheme to provide support to claimants in residential care and nursing homes was introduced (April 1993).
- Special rules over the treatment of capital held by claimants in residential care, nursing home (RCNH) were introduced (April 1995).
- On 2<sup>nd</sup> October 1995 waiting periods were introduced for claimants without a pensioner premium before help is given (8 weeks for those with loans taken out before that date and 9 months for those with loans taken out thereafter). From the same date, most claimants with mortgage interest payments have them calculated using a standard rate based on the average of the largest building societies' basic mortgage rates (October 1995).
- Claimants in RCHN, Part III accommodation are allowed capital of up to £16,000. Tariff income is payable where the savings are over £10,000 (April 1996).
- Changes to the rules for asylum seekers (November 1996).
- Family premium and lone parent premium were combined to form family premium (lone parent) which was paid to all eligible claimants (April 1997).
- One parent benefit was replaced by a new rate of child benefit for lone parents (April 1997).
- Deductions for payment of arrears of mortgage interest abolished (April 1997).
- Family premium (lone parent) was abolished, although those in receipt at that time continue to receive it until a relevant change of circumstances (April 1998).
- The dependants allowance payable for each child under 11 was increased by £2.50 per week (November 1998).
- The Minimum Income Guarantee (MIG) was introduced increasing the amount payable to those aged 60 or over, except for special category cases (April 1999).
- Introduction of the new budgeting loan scheme.
- The dependants allowance payable for each child under 11 was increased by a further £4.70 per week (October 1999).



- Family Credit and Disability Working Allowance were replaced by Working Families Tax Credit and Disabled Persons Tax Credit respectively (October 1999).
- The dependants allowance for under 11's was abolished increasing the amount payable for children aged under 11 to match that of the under 16's: There are now two remaining rates for: dependants under 16, and the dependants aged 16 and over (April 2000).
- The MIG was updated in line with earnings (April 2000).
- Persons claiming asylum on or after 3<sup>rd</sup> April 2000 and who are awaiting decisions from the Home Office will be excluded from claiming social security benefits. They will receive support from either the National Asylum Support Service (set up by the Home Office) or local authorities (April 2000).
- Further increase (by £4.35) in the amount payable in respect of children aged up to 16 in October 2000.
- Claimants aged over 60 that are not in residential accommodation are now allowed up to £6000 in capital assets before their benefit is affected by tariff income. If capital totals more than £12000 the claimant is not entitled to Income Support (April 2001).
- All pensioner premiums are paid at the same rate i.e. the HPP rate (April 2001).
- The Government introduced a new Disability Income Guarantee (DIG) for severely disabled people and the Enhanced Disability Premium (April 2001).
- Preserved rights on all existing claims were abolished; these cases became the financial responsibility of the Local Authorities (April 2002).
- Part III/RA was transitionally protected if still in payment on the 8<sup>th</sup> April 2002 (April 2002).
- From 8<sup>th</sup> April 2002 claimants on Part III or who are still permanent residents of RCNH had their higher capital limits protected (April 2002).



**Annex 4: Personal Allowances and Rates of Premium**  
**Table 1: Income Support: personal allowance 1989 to 2002**

	£ per week							
	Single Person				Lone Parent			
	Under 18		18 or over		Under 18		18 or over	
	Usual rate	Higher rate	18 to 24	25 or over	Usual rate	Higher rate		
April 10, 1989	20.80	-	27.40	34.90	20.80	-	34.90	
April 9, 1990	21.90	28.80	28.80	36.70	21.90	-	36.70	
April 8, 1991	23.65	31.15	31.15	39.65	23.65	31.15	39.65	
October 7, 1991	23.90	31.40	31.40	39.65	23.90	31.40	39.65	
April 6, 1992	25.55	33.60	33.60	42.45	25.55	33.60	42.45	
April 12, 1993	26.45	34.80	34.80	44.00	26.45	34.80	44.00	
April 11, 1994	27.50	36.15	36.15	45.70	27.50	36.15	45.70	
April 10, 1995	28.00	36.80	36.80	46.50	28.00	36.80	46.50	
April 8, 1996	28.85	37.90	37.90	47.90	28.85	37.90	47.90	
April 7, 1997	29.60	38.90	38.90	49.15	29.60	38.90	49.15	
April 6, 1998	30.30	39.85	39.85	50.35	30.30	39.85	50.35	
April 12, 1999	30.95	40.70	40.70	51.40	30.95	40.70	51.40	
April 10, 2000	31.45	41.35	41.35	52.20	31.45	41.35	52.20	
April 9, 2001	31.95	42.00	42.00	53.05	31.95	42.00	53.05	
April 8, 2002	32.50	42.70	42.70	53.95	32.50	42.70	53.95	
	Couple		Dependant children					
	Both under 18	One or both 18 or over	Under 11	11 to 15	16 to 17	18		
April 10, 1989	41.60	54.80	11.75	17.35	20.80	27.40		
April 9, 1990	43.80	57.60	12.35	18.25	21.90	28.80		
April 8, 1991	47.30	62.25	13.35	19.75	23.65	31.15		
October 7, 1991	47.30	62.25	13.60	20.00	23.90	31.40		
April 6, 1992	50.60	66.60	14.55	21.40	25.55	33.60		
April 12, 1993	52.40	69.00	15.05	22.15	26.45	34.80		
April 11, 1994	54.55	71.70	15.65	23.00	27.50	36.15		
April 10, 1995	55.55	73.00	15.95	23.40	28.00	36.80		
April 8, 1996	57.20	75.20	16.45	24.10	28.85	37.90		
			Dependant children					
			Under 11 <sup>(1a)</sup>	11 to 16 <sup>(1b)</sup>	16-18 <sup>(1c)</sup>			
April 7, 1997	58.70	77.15		16.90	24.75	29.60		
April 6, 1998	60.10	79.00		17.30	25.35	30.30		
November 5, 1998	60.10	79.00		19.80	25.35	30.30		
April 12, 1999 <sup>(2)</sup>		80.65		20.20	25.90	30.95		
October 4, 1999		80.65		24.90	25.90	30.95		
			Dependant children					
			Up to and inc 16 <sup>(3a)</sup>	16-18 <sup>(3b)</sup>				
April 10, 2000 <sup>(3)</sup>		81.95	26.60	31.75				
October 23, 2000		81.95	30.95	31.75				
April 9, 2001		83.25	31.45	32.25				
October 22, 2001		83.25	32.95	33.75				
April 8, 2002		84.65	33.50	34.30				

## Notes

1. From 7 April 1997 the age banding used for the benefit calculation of dependant children have changed.

from this date the banding are as follows:

a. Birth to September following 11th birthday.

b. From September following the 11th birthday to September following the 16th birthday

c. From September following the 16th birthday to the day before the 19th birthday.

Some children will remain eligible for a different rate of benefit i.e. have 'protected rights'. These are as follows:-

\*Child aged 11 before 7 April 1997 : allowance £25.35

\*Child aged 16 before 7 April 1997 : allowance £30.30

\*Child aged 18 before 7 April 1997 : allowance £39.85

2. From 12 April 1999 the personal allowance for married or unmarried couples where both members are not yet 18 or one of the couple is aged 18 or over depends on the couple's circumstances. They may be entitled to a couple allowance or a single person's allowance dependant upon certain criteria.

3. From 10 April 2000 there are only 2 age bands for dependants. From this date the age banding are as follows:

(a) Birth to September following 16th birthday.

(b) From September following 16th birthday to the day before th 19th birthday.



**Table 2: Income Support: Rates of Premium 1988 to 2002**

	£ per week									
	Disabled		Disability		Enhanced Disability <sup>(5)</sup>			Severe Disability		
	child	Carer <sup>(1)</sup>	Single	Couple	Child	Single	Couple	Single	Couple (one)	Couple (both)
April 11, 1988	6.15	-	13.05	18.60	-	-	-	24.75	24.75	49.50
April 10, 1989	6.50	-	13.70	19.50	-	-	-	26.20	26.20	52.40
April 9, 1990	15.40	10.00	15.40	22.10	-	-	-	28.20	28.20	56.40
April 8, 1991	16.65	10.80	16.65	23.90	-	-	-	31.25	31.25	62.50
April 6, 1992	17.80	11.55	17.80	25.55	-	-	-	32.55	32.55	65.10
April 12, 1993	18.45	11.95	18.45	26.45	-	-	-	33.70	33.70	67.40
April 11, 1994	19.45	12.40	19.45	27.80	-	-	-	34.30	34.40	68.60
April 10, 1995	19.80	12.60	19.80	28.30	-	-	-	35.05	35.05	70.10
April 8, 1996	20.40	13.00	20.40	29.15	-	-	-	36.40	36.40	72.80
April 7, 1997	20.95	13.35	20.95	29.90	-	-	-	37.15	37.15	74.30
April 6, 1998	21.45	13.65	21.45	30.60	-	-	-	38.50	38.50	77.00
April 12, 1999	21.90	13.95	21.90	31.25	-	-	-	39.75	39.75	79.50
April 10, 2000	22.25	14.15	22.25	31.75	-	-	-	40.20	40.20	80.40
April 9, 2001	30.00	24.40	22.60	32.25	11.05	11.05	16.00	41.55	41.55	83.10
April 8, 2002	35.50	24.80	23.00	32.80	11.25	11.25	16.25	42.25	42.25	84.50
	Family		Lone Parent		Pensioner		Enhanced Pensioner <sup>(3)</sup>		Higher Pensioner	
	All	Couple	Lone Parent	Lone Parent <sup>(4)</sup>	Single	Couple	Single	Couple	Single	Couple
April 11, 1988	6.15	-	-	3.70	10.65	16.25	-	-	13.05	18.60
April 10, 1989	6.50	-	-	3.90	11.20	17.05	-	-	13.70	19.50
October 9, 1989	6.50	-	-	3.90	11.20	17.05	13.70	20.55	16.20	23.00
April 9, 1990	7.35	-	-	4.10	11.80	17.95	14.40	21.60	17.05	24.25
April 8, 1991	7.95	-	-	4.45	13.75	20.90	15.55	23.35	18.45	26.20
April 6, 1992	9.30	-	-	4.75	14.70	22.35	16.65	25.00	20.75	29.55
April 12, 1993	9.65	-	-	4.90	17.30	26.25	19.30	29.00	23.55	33.70
April 11, 1994	10.05	-	-	5.10	18.25	27.55	20.35	30.40	24.70	35.30
April 10, 1995	10.25	-	-	5.20	18.60	28.05	20.70	30.95	25.15	35.95
April 8, 1996	10.55	-	-	5.20	19.15	28.90	21.30	31.90	25.90	37.05
April 7, 1997	-	10.80	15.75	-	19.65	29.65	21.85	32.75	26.55	38.00
April 6, 1998	-	11.05	15.75 <sup>(4)</sup>	-	20.10	30.35	22.35	33.55	27.20	38.90
April 12, 1999	-	13.90	15.75	-	23.60	35.95	25.90	39.20	30.85	44.65
April 10, 2000	-	14.25	15.90	-	26.25	40.00	28.65	43.40	33.85	49.10
April 9, 2001 <sup>(6)</sup>	-	14.20	15.90	-	39.10	57.30	39.10	57.30	39.10	57.30
April 8, 2002	-	14.75	15.90	-	44.20	65.15	44.20	65.15	44.20	65.15
April 8, 2002	Bereavement <sup>(7)</sup>									
April 8, 2002	21.55									

## Notes

1. Carer premium introduced in October 1990.
2. Family Premium increased to £8.70 from 7 October 1991.
3. Enhanced Pensioner premium introduced in October 1989.
4. From 7 April 1997 Lone parents receive one premium (Family premium-Lone parent rate) instead of two separate premiums i.e. Family premium & Lone parent premium.
5. Enhanced Disability Premium introduced in April 2001
6. Alignment of Premiums paid to 'aged 60 or over' (MIG) April 2001
7. Bereavement Premium introduced in April 2002.



## Index

### **Section 1 Caseload-key characteristics and average payments**

Table 1.1 Income Support claimants by statistical group: November 2001 to November 2002

Chart 1A Income Support claimants by statistical group: November 2001 and November 2002

Table 1.2 Income Support claimants by statistical group (%): November 2001 to November 2002

Table 1.3 Average weekly payments made to Income Support claimants by statistical group: November 2001 to November 2002

Chart 1B Average weekly payments made of Income Support claimants by statistical group: November 2001 & November 2002

Table 1.4 Income Support claimants by age and gender: November 2001 to November 2002

Chart 1C Income Support claimants by age: November 2001 and November 2002

Table 1.5 Average weekly payments made to Income Support claimants by age and gender: November 2001 to November 2002

Table 1.6 Income Support claimants by family type: November 2001 to November 2002

Table 1.7 Average weekly payments made to Income Support claimants by family type: November 2001 to November 2002

Chart 1D Average weekly payments made to Income Support claimants by family type: November 2001 and November 2002

Chart 1E Estimated total weekly expenditure on Income Support by group (£): November 2001 and November 2002



**Section 2 Length of time on IS**

Table 2.1 Income Support claimants by duration of current claim: November 2001 to November 2002

Chart 2A Income Support claimants by duration of current claim: November 2002

Table 2.2 Income Support claimants by duration of current claim and statistical group: November 2002

Chart 2B Income Support claimants by duration of current claim and statistical group: November 2002

Table 2.3 Income Support claimants by duration of current claim, age and gender: November 2002

Table 2.4 Income Support claimants by duration of current claim and range of weekly IS payment: November 2002

**Section 3 Main claimant groups**

Table 3.1 Income Support claimants receiving a Pensioner premium by age and gender: November 2001 to November 2002

Table 3.2 Income Support claimants in receipt of a Disability premium by age and gender: November 2001 to November 2002

Table 3.3 Income Support claimants in receipt of a Lone Parent premium by age and gender: November 2001 to November 2002

Table 3.4 "Other" Income Support claimants by age and gender: November 2001 to November 2002

**Section 4 Claimants, partners and dependants**

Table 4.1 Beneficiaries of Income Support by type: November 2001 to November 2002

Table 4.2 Income Support claimants by age and number of dependants: November 2002



**Section 5 Premium payments**

Table 5.1 Income Support premiums by type and number: November 2001 to November 2002

Table 5.2 Income Support claimants with premiums by family and premium type: November 2002

Table 5.3 Income Support premiums by type and statistical group: November 2002

**Section 6 Claimants in residential care and nursing homes (RCNH)**

Table 6.1 Income Support claimants in residential care and nursing homes: November 2001 to November 2002

Chart 6A Income Support claimants in residential care and nursing homes by type of care: November 2001 and November 2002

**Section 7 District council and Social Security Office analyses**

Table 7.1 Income Support claimants by District Council: November 2001 to November 2002

Table 7.2 Income Support claimants by statistical group and District Council: November 2002

Table 7.3 Beneficiaries of Income Support by type and District Council: November 2002

Table 7.4 Income Support claimants by Social Security Office: November 2001 to November 2002

Table 7.5 Income Support claimants by statistical group and Social Security Office: November 2002

Table 7.6 Income Support claimants by type and Social Security Office: November 2002



**Section 8 United Kingdom Analysis**

Table 8.1 Income Support claimants by GOR: November 1998 to November 2002

Table 8.2 Income Support by GOR and statistical group: November 2002

Table 8.3 Beneficiaries of Income Support by type and GOR: November 2002

Chart 8A Beneficiaries of Income Support by type and GOR: November 2002

Table 8.4 Average weekly payment of Income Support by GOR and statistical group: November 2002

Table 8.5 Income Support claimants by GOR and duration of current claim: November 2002



**ISSN 1475-5777**

