

**Department for Social Development**

**Jobseeker's  
Allowance  
Summary Statistics**

**DSD**

**Department for  
Social Development**

**August 2001**



**A National Statistics Publication**



**Department for Social Development**

**Jobseeker's  
Allowance  
Summary Statistics**

**August 2001**

## **Published BY**

Statistics & Research Branch  
Department for Social Development  
Room 3 Block 4,  
The Village, Stormont,  
Belfast, BT4 3SJ

Telephone: 02890 5/22803  
GTN (440) 22803  
Fax: 02890 5/22763  
e-mail: [srb@dndi.gov.uk](mailto:srb@dndi.gov.uk)

ISSN 1475-5769

Further Statistics for Northern Ireland relating to Social Security Benefits can be obtained by visiting our website;

<http://www.dndi.gov.uk/statistics-research/introduction.asp>

Statistics relating to Social Security Benefits in Great Britain can be obtained by visiting the following website;

<http://www.dss.gov.uk/asd/online.html>

**Contents**

	Page
Introduction .....	3
Glossary of terms and conventions .....	4
Main Findings .....	6
Section 1: Caseload by Benefit entitlement .....	9
Section 2: Duration of Claim .....	11
Section 3: Claimants without contribution and income-based benefit ....	13
Section 4: District Council and Social Security Office Analysis.....	16
Section 5: United Kingdom Regional Analysis .....	21
Section 6: Gender, age and marital status .....	23
Section 7: Amounts of benefit .....	26
Annex 1: Technical details.....	28
Annex 2: Background to JSA.....	29
Annex 3: Sampling Errors.....	30
List of Tables .....	31

## Introduction

This publication presents data from the Jobseeker's Allowance (JSA) Quarterly Statistical Enquiry (QSE), and also historical data on unemployed claimants of Unemployment Benefit and Income Support. Data is based on a 20% sample of all JSA claimants which is conducted on the second Thursday of February, May, August and November. The publication provides numbers of unemployed claimants for each quarter from February 1996 through to August 2001 with the exception of November 1996 which is unavailable. There is a more in-depth analysis for August 2001 and comparisons with the previous year.

Jobseeker's Allowance (JSA) replaced Unemployment Benefit and Income Support for unemployed people on 7 October 1996. JSA can be claimed by people who are available for and actively seeking employment, including those in work for less than 16 hours a week on average, and by people on a Government training scheme. They must not be in relevant education and must be under pensionable age (i.e. 60 years for females and 65 for males). Young people aged 16-17 are generally excluded from claiming, however there are exceptions such as suffering severe hardship (See Annexe 2 for more details).

Jobseeker's Allowance data is extracted from the JSA payment system (JSAPS). Unemployment Benefit data is extracted from the National Unemployment Benefits System (NUBS). Claimants are selected for the 20% sample based on National Insurance number endings. The Department of Enterprise Trade and Investment (DETI) unemployment count is used to gross up the sample (See Technical Details in Annexe 1).

Further advice on analysis can be obtained from the contact point on page 3.

## **Glossary of Terms and Conventions**

### **Glossary of Terms**

#### **Benefit entitlement**

##### **Contribution-based:-**

Benefit based on National Insurance contributions paid at a personal rate for up to 6 months.

##### **Income-based:-**

Benefit based on claimants and dependants needs payable for as long as qualifying conditions are met.

##### **Contribution and income-based:-**

A claimant can receive either contribution or income-based benefit, but not both. However for the purposes of this publication, claimants who satisfy the conditions for contribution-based JSA, but receive income-based JSA are shown separately.

#### **Child**

A dependant aged under 16. (Also dependants aged 16-18 for whom Child Benefit is in receipt).

#### **Couple**

Two persons either married or living together as husband and wife.

#### **Dependant**

A person who is not a *Partner* and whose resources and requirements are included with those of the claimant.

#### **Disallowances**

Refusals of claims to benefit because of failure to satisfy the qualifying conditions.

#### **Duration of claim**

The length of time a claimant has been unemployed in the current claim.



## Income Support (IS)

Income Support is an income-related benefit which provides financial help for people who are not required to be available for work, are not in remunerative work and whose income from all sources is below a minimum level set by parliament. JSA replaced Income Support for the unemployed in October 1996.

## Marital status

Whether the claimant is without a partner (single) or with a partner (couple) - see Partner.

## Partner

One of a married or unmarried couple, living together.

## Sanctions

The non-payment of JSA for a specified period because the jobseeker has unreasonably caused or perpetuated their own unemployment.

## Single

A claimant who is not living as one of a couple.

## Unemployment related benefits

Benefits paid due to unemployment. From October 1996 they are Jobseeker's Allowance, including JSA (Cont), JSA (IB) or Hardship payments. Prior to October 1996 they were Unemployment Benefit and/or Income Support.

## Conventions

JSA	Jobseeker's Allowance
JSA (Cont)	Contribution-based JSA
JSA (IB)	Income-based JSA
IS	Income Support
GOR	Government Office Region
-	Nil or Negligible
.	Not applicable
n/a	Not available
<i>Italics</i>	<i>Counts in italics are not statistically reliable</i>

## **Main findings**

This section summarises the key findings of the August 2001 JSA Summary Statistics.

### **Section 1 - Caseload and benefit entitlement**

The overall number of unemployed claimants fell by nearly two thousand (1,889) between August 2000 and August 2001 to 42,234. The majority of this reduction in numbers was accounted for by recipients of income-based benefit.

The proportion of the overall caseload in receipt of only contribution-based JSA increased to 13.4% in August 2001, from 12.1% in the previous year. This figure is lower than that of Great Britain, which has a proportion of the overall caseload in receipt of only contribution-based benefit of 15.9%.

### **Section 2 - Duration of claim**

There was a slightly lower proportion of claims of short duration (less than 3 months) in August 2001, 35.7% compared to 37.3% a year earlier. Claims of less than 3 months are a proxy for new claims.

There was also a slightly larger proportion of claims of more than a year in August 2001 (31.8%) than in August 2000 (31.2%). This was also the case in Great Britain, with claims of long duration (more than one year) falling to 21.5% of the overall caseload, from 24.5% in the previous year.

Between August 1998 and August 2001 the proportion of JSA claimants who had been out of work for one year or more decreased from 44.3% to 31.8% of all JSA claimants. Some of this decrease will be due to changing economic circumstances. But, it will also be impacted upon by the introduction of the New Deal for 18 to 24 year olds and the New Deal for 25+ both of which are designed to assist the longer-term unemployed into work or training.

When compared with the corresponding figures for Great Britain, Northern Ireland is shown to have a greater proportion of claims of long duration (more than one year), namely 31.8% of the overall caseload in August 2001, compared to the GB figure of 21.5%.

Over two thirds (67.2%) of female and almost half (45.6%) of male unemployed claimants had a current claim duration of less than 6 months in August 2001, with a far greater percentage of males having a claim duration of over 1 year.



### **Section 3 - Claimants without contribution and/or income-based benefit**

The proportion of claimants not receiving contribution-based benefit has decreased to 85.7% in August 2001 from 86.9% in the previous year. The main reasons for claimants not receiving contribution-based benefit in August 2001 are contribution deficiency (62.7% of all claimants) and entitlement exhausted (16.4% of all claimants).

This was also the case in Great Britain with figures of 58.2% and 14.0% respectively.

The number of JSA claimants who are not entitled to unemployment related benefit rose slightly to 7.9% in August 2001 from 7.8% in the previous year. The corresponding figures for Great Britain between August 2000 and August 2001 rose slightly from 9.0% to 9.8% of the overall caseload. The main reason for non-entitlement once again was contribution deficiency and entitlement exhausted.

### **Section 4 – District Council and Social Security Office analysis**

The proportion of JSA claimants with benefit varied between 84.9% in Newtownabbey to 95.9% in Belfast.

Unemployed claimants in Moyle were least likely to be in receipt of only JSA Contribution-based benefit in August 2001 (4.8% compared to 13.4% for Northern Ireland as a whole and 21.6% in Antrim).

The proportion of JSA claimants in receipt of only JSA Income-based benefit in August 2001 varied between 63.4% in Newtownabbey and 85.5% in Belfast.

JSA claimants as a proportion of people of working age in Northern Ireland in August 2001 was 4.1%. These proportions range from 2.3% in Banbridge and Castlereagh to 7.4% in Derry.

Foyle Social Security Office (Londonderry) had the largest share of the JSA caseload with 3,503 claimants (8.3% of the total caseload) at August 2001. Kilkeel Social Security Office had only 183 claimants (0.4% of the total caseload).

Larne Social Security Office had the highest proportion of contribution based only claimants (22.6%) while Falls Road Social Security Office had the lowest (4.3%).

## Section 5 – United Kingdom Regional analysis

JSA claimants in the United Kingdom have decreased by 10.7% in the year to August 2001. There has been a decrease in every Government Office Region, ranging from 4.5% in Northern Ireland to 15.3% in the South East.

JSA Income-based Beneficiaries as a proportion of the population under state retirement age in the United Kingdom in August 2001 was 2.2%. This is lower than the corresponding figure for Northern Ireland (3.3%). These proportions for the Government Office Regions range from 1.0% in the South East to 3.3% in the North East and Northern Ireland.

## Section 6 - Gender, age and marital status

Men are more likely to claim JSA (72.5% of claimants in August 2001). This is partly because income-based benefit is claimed on behalf of couples by only one partner, normally the man. The corresponding figure for men in Great Britain in August 2001 was 74.8% of claimants.

Female unemployed claimants are more likely than males to be in receipt of only JSA contribution-based benefit in August 2001 (19.7% compared with 11.0%) but less likely to receive JSA income-based (66.8% compared to 81.9%).

The age distribution of unemployed claimants has changed very little over the year to August 2001. Over a quarter (30%) of all claimants are aged under 25, over half (53%) are aged 25-49 and just under a fifth (17%) are aged 50 or over. The figures for Great Britain with regards to age groups in August 2001 were similar.

## Section 7 - Amounts of benefit

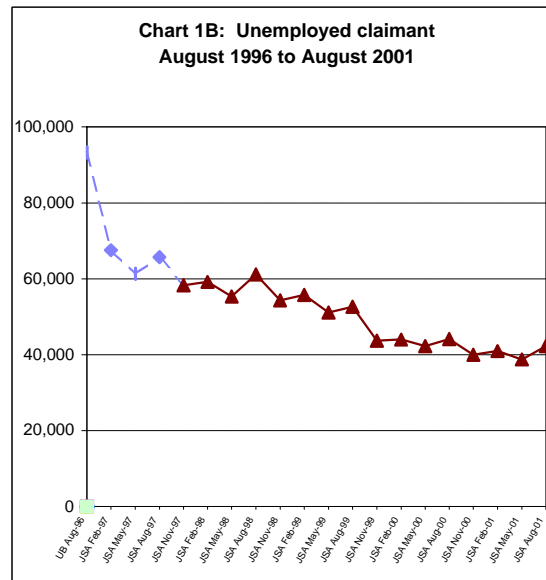
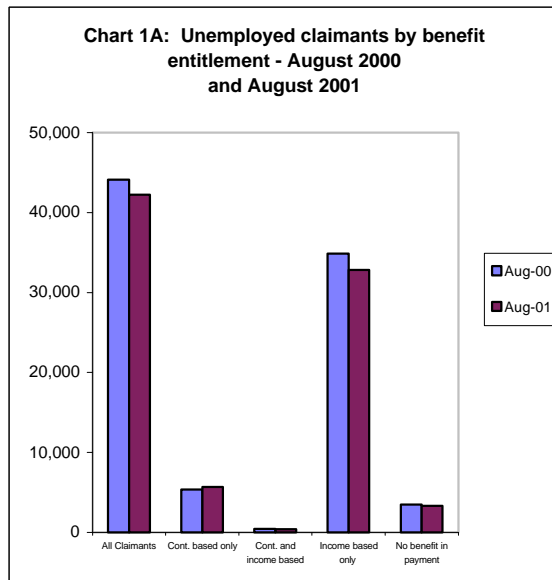
Single claimants without dependants tend to receive the lowest amounts of benefit, on average £49.58 per week for contribution-based and £49.26 for those with income-based. Recipients of income-based JSA with partners and/or dependants receive higher amounts (£87.34 for couples without dependants and £131.77 for single/couples with dependants).

However the former account for only 3.5% of all JSA claimants, whilst the latter account for 10%. The corresponding figures for Great Britain in August 2001, with regards to JSA with partners and dependants, are similar.

**Table 1.1: Unemployed Claimants by benefit entitlement - 1996 to 2001**

Unemployment Benefit/Income Support	Type of unemployment related benefit					
	All Claimants	All with benefit	Contribution based only	Contribution and income based	Income based only	No benefit in payment
<b>Unemployment Benefit/Income Support</b>						
May-96	82,713	74,210	9,820	1,431	62,959	8,503
Aug-96	93,263	83,826	12,726	1,468	69,632	9,437
<b>Jobseeker's Allowance</b>						
Feb-97	67,541	62,089	5,914	826	55,349	5,452
May-97	61,309	56,765	3,646	772	52,346	4,544
Aug-97	65,727	60,889	6,570	649	53,669	4,838
Nov-97	58,305	54,242	5,054	586	48,602	4,063
Feb-98	59,161	55,049	5,807	622	48,620	4,112
May-98	55,323	51,552	4,720	586	46,246	3,771
Aug-98	61,175	56,914	6,716	679	49,519	4,261
Nov-98	54,327	50,443	5,076	525	44,842	3,884
Feb-99	55,796	51,834	5,397	663	45,774	3,962
May-99	51,137	47,561	4,423	642	42,496	3,577
Aug-99	52,652	48,339	5,383	538	42,417	4,313
Nov-99	43,720	40,383	4,035	410	35,939	3,337
Feb-00	44,018	40,756	4,792	491	35,473	3,262
May-00	42,255	38,900	4,466	489	33,945	3,355
Aug-00	44,123	40,667	5,351	444	34,872	3,456
Nov-00	40,007	36,527	4,536	429	31,562	3,480
Feb-01	40,971	37,772	4,822	359	32,592	3,199
May-01	38,766	35,632	4,313	359	30,961	3,133
Aug-01	42,234	38,901	5,660	391	32,850	3,333

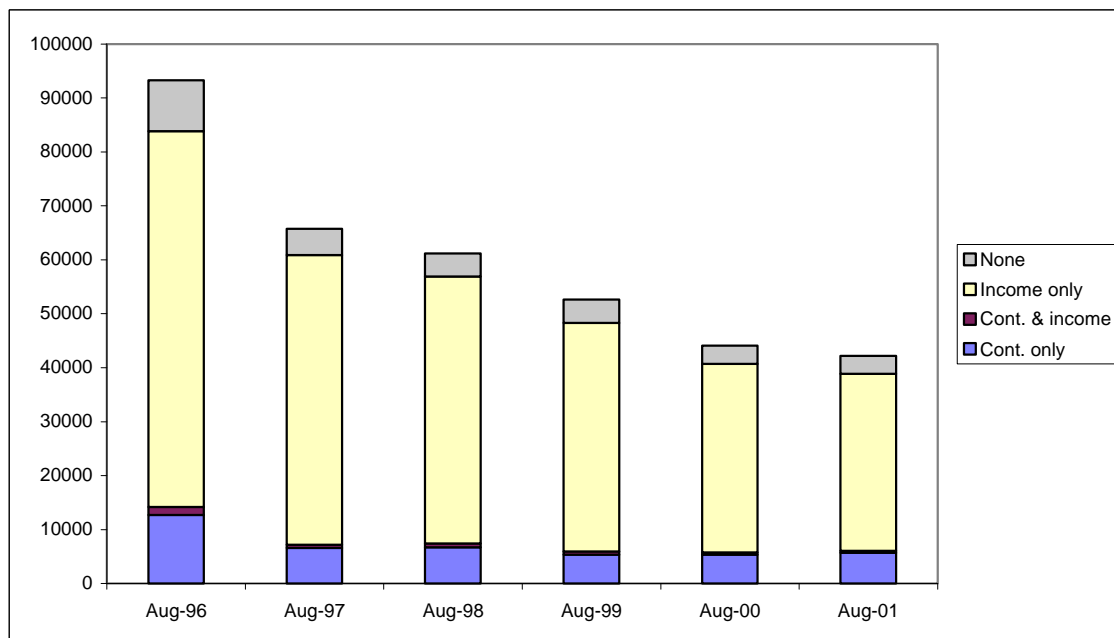
Note: No figures available for November 1996



**Table 1.2: Unemployed Claimants by benefit entitlement - 1996 to 2001**

	All Claimants (*000=100%)	All with benefit %	Type of unemployment related benefit			
			Contribution based only %	Contribution and income based %	Income based only %	No benefit in payment %
<b>Unemployment Benefit/Income Support</b>						
Aug-96	93,263	89.9	13.6	1.6	74.7	10.1
<b>Jobseeker's Allowance</b>						
Aug-97	65,727	92.6	10.0	1.0	81.7	7.4
Aug-98	61,175	93.0	11.0	1.1	80.9	7.0
Aug-99	52,652	91.8	10.2	1.0	80.6	8.2
Aug-00	44,123	92.2	12.1	1.0	79.0	7.8
Aug-01	42,234	92.1	13.4	0.9	77.8	7.9

**Chart 1C: Unemployed Claimants by benefit entitlement - 1996 to 2001**



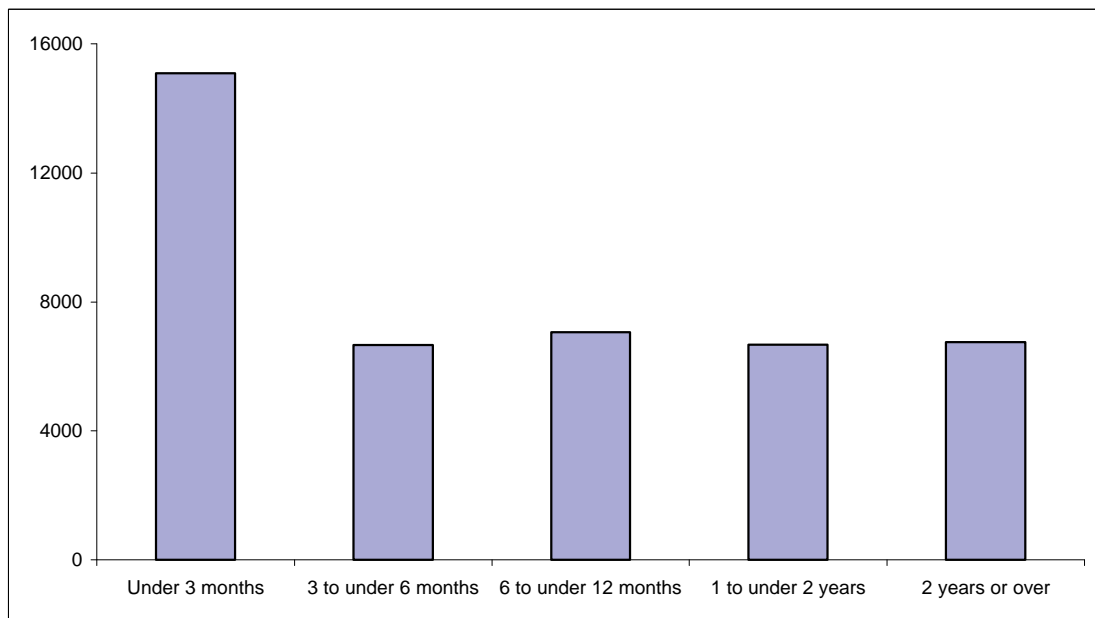
**Table 2.1: Unemployed Claimants by duration of claim - August 1998 to August 2001**

Duration	Aug-98	Aug-99	Aug-00	Aug-01
<b>All claimants ('000= 100%)</b>	<b>61,175</b>	<b>52,652</b>	<b>44,123</b>	<b>42,234</b>
Under 3 months	18,720	17,240	16,444	15,091
3 to under 6 months	6,715	6,863	6,852	6,663
6 to under 12 months	8,622	8,632	7,533	7,057
1 to under 2 years	8,983	6,474	6,208	6,670
2 years or over	18,134	13,444	7,085	6,753

Duration	Aug-98	Aug-99	Aug-00	Aug-01
<b>All claimants ('000= 100%)</b>	<b>100%</b>	<b>100%</b>	<b>100%</b>	<b>100%</b>
Under 3 months	30.6	32.7	37.3	35.7
3 to under 6 months	11.0	13.0	15.5	15.8
6 to under 12 months	14.1	16.4	17.1	16.7
1 to under 2 years	14.7	12.3	14.1	15.8
2 years or over	29.6	25.5	16.1	16.0

**Chart 2A: Unemployed Claimants by duration of current claim - August 2001**



**Table 2.2: Unemployed Claimants by benefit entitlement and duration of current claim - August 2001**

	All Claimants	All with benefit	Type of unemployment related benefit			
			Contribution based only	Contribution and income based	Income based only	No benefit in payment
<b>Duration</b>						
<b>All ('000=100%)</b>	<b>42,234</b>	<b>38,901</b>	<b>5,660</b>	<b>391</b>	<b>32,850</b>	<b>3,333</b>
% up to 2 weeks	6.0	4.8	9.1	5.4	4.0	20.3
% 2 to under 6 weeks	12.8	12.5	28.3	15.6	9.8	16.0
% 6 to under 13 weeks	16.9	17.0	34.6	34.5	13.8	16.1
% 13 to under 26 weeks	15.8	16.2	28.0	44.5	13.8	10.9
% 26 to under 39 weeks	9.4	9.1	0.0	0.0	10.8	12.3
% 39 weeks to under 1 year	7.4	7.4	0.0	0.0	8.8	6.4
% 1 to under 2 years	15.8	16.1	0.0	0.0	19.1	12.0
% 2 years or over	16.0	16.8	0.0	0.0	20.0	6.0

**Table 2.3 Unemployed Claimants by gender, age and duration of current claim - August 2001**

Age	All Claimants ('000=100%)	Duration of current claim			
		Under 6 months %	6 months to under 1 year %	1 to under 2 years %	2 years or more %
<b>All persons</b>	<b>42,234</b>	<b>51.5</b>	<b>16.7</b>	<b>15.8</b>	<b>16.0</b>
Under 25	12,796	75.2	16.1	6.3	2.4
25 to 49	22,620	44.4	17.4	19.9	18.3
50 or over	6,818	30.8	15.7	19.9	33.6
<b>Males</b>	<b>30,604</b>	<b>45.6</b>	<b>17.8</b>	<b>17.5</b>	<b>19.1</b>
Under 25	7,983	72.4	17.4	7.4	2.8
25 to 49	17,568	38.8	18.4	21.6	21.2
50 or over	5,053	26.6	16.6	19.3	37.5
<b>Females</b>	<b>11,630</b>	<b>67.2</b>	<b>13.7</b>	<b>11.3</b>	<b>7.8</b>
Under 25	4,813	79.8	13.9	4.5	1.8
25 to 49	5,051	63.6	13.8	14.2	8.4
50 or over	1,765	42.9	13.2	21.4	22.5



**Table 3.1 Unemployed claimants : receipt / non-receipt of contribution-based benefit by gender - August 2000 and August 2001**

	Aug-00		Aug-01		% All males	% All females
	Total	% All claimants	Total	% All claimants		
<b>All claimants</b>	<b>44,123</b>	100.0	<b>42,234</b>	100.0	100.0	100.0
Claimants in receipt of contribution-based benefit(1)	<b>5,795</b>	13.1	<b>6,050</b>	14.3	12.1	20.2
Claimants not in receipt of contribution-based benefit	<b>38,328</b>	86.9	<b>36,184</b>	85.7	87.9	79.8

1. Includes claimants in receipt of income-based JSA, but who would also be entitled via the contributory route.

**Table 3.2: Unemployed claimants not in receipt of contribution-based benefit by gender and benefit reason - August 2000 and August 2001**

Reason for non-entitlement	Aug-00		Aug-01		% All males	% All females
	Total	% All claimants	Total	% All claimants		
<b>All without JSA(C)</b>	<b>38,328</b>	86.9	<b>36,184</b>	85.7	87.9	79.8
(% by claimants):						
Waiting days	<b>431</b>	1.0	<b>369</b>	0.9	0.7	1.2
Entitlement exhausted	<b>7,507</b>	17.0	<b>6,908</b>	16.4	19.2	8.8
Entitlement not yet determined	<b>178</b>	0.4	<b>1,479</b>	3.5	3.1	4.5
Contribution deficiency	<b>29,273</b>	66.3	<b>26,491</b>	62.7	62.8	62.5
Benefit disallowed or sanctioned(1)	<b>608</b>	1.4	<b>535</b>	1.3	1.0	2.0
Other	<b>10</b>	0.0	<b>26</b>	0.1	0.0	0.1

1. Includes claimants who lose entitlement because they have earnings or income above prescribed levels

**Table 3.3: Unemployed claimants: receipt / non-receipt of unemployment-related benefit by gender - August 2000 and August 2001**

	Aug-00		Aug-01			
	Total	% All claimants	Total	% All claimants	% All males	% All females
<b>All claimants</b>	<b>44,123</b>	100.0	<b>42,234</b>	100.0	100.0	100.0
Claimants in receipt of unemployment-related benefit	<b>40,667</b>	92.2	<b>38,901</b>	92.1	94.0	87.0
Claimants not in receipt of unemployment-related benefit	<b>3,456</b>	7.8	<b>3,333</b>	7.9	6.0	13.0

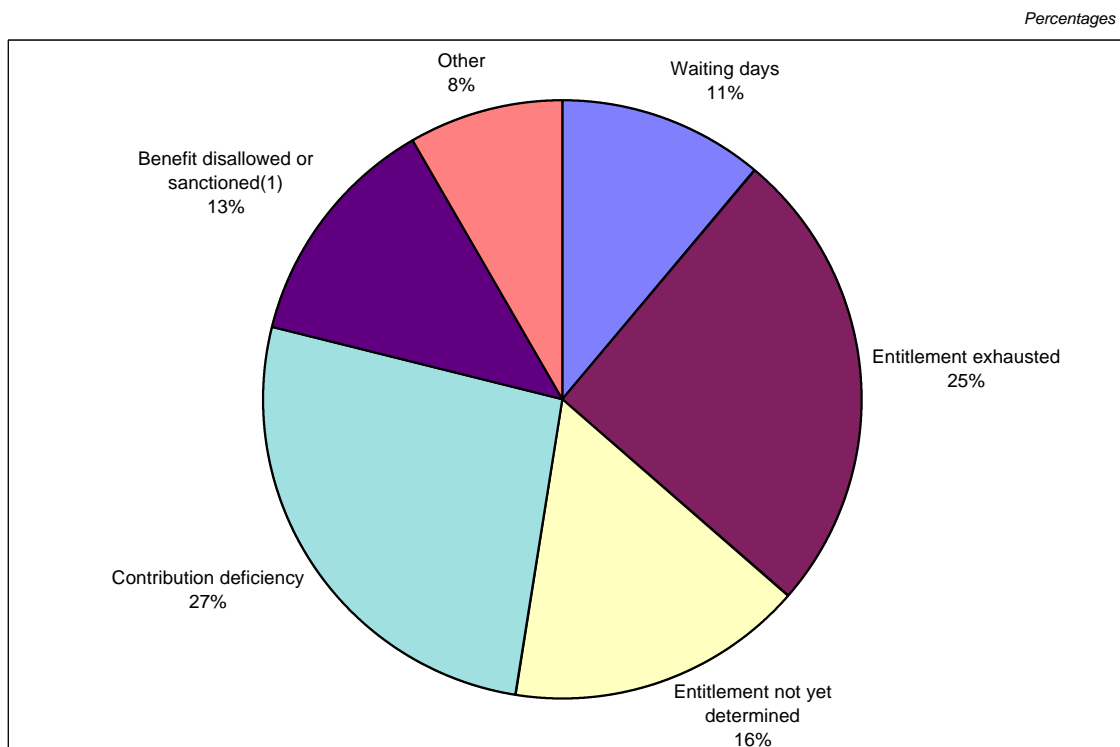


**Table 3.4: Unemployed claimants not in receipt of unemployment-related benefit by gender and benefit reason - August 2000 and August 2001**

Reason for non-entitlement	Aug-00		Aug-01			
	Total	% All claimants	Total	% All claimants	% All males	% All females
<b>All without JSA</b>	<b>3,456</b>	<b>7.8</b>	<b>3,333</b>	<b>7.9</b>	<b>6.0</b>	<b>13.0</b>
(% by claimants):						
Waiting days	431	1.0	369	0.9	0.7	1.2
Entitlement exhausted	959	2.2	844	2.0	1.5	3.4
Entitlement not yet determined	106	0.2	539	1.3	0.9	2.2
Contribution deficiency	1,189	2.7	877	2.1	1.4	3.8
Benefit disallowed or sanctioned(1)	547	1.2	427	1.0	0.8	1.7
Other	225	0.5	276	0.7	0.6	0.3

1. Includes claimants who lose entitlement because they have earnings or income above prescribed levels

**Chart 3A: Unemployed JSA claimants not in receipt of any unemployment-related benefit by reason for non-payment - August 2001**



**Table 4.1: JSA claimants at August 2001: by District Council and benefit position**

District Council	All Claimants ( ' 000 = 100%)	Type of unemployment related benefit				
		All with benefit	Contribution based only	Contribution and income based	Income based only	No benefit in payment
<b>All</b>	<b>42,234</b>	<b>38,901</b>	<b>5,660</b>	<b>391</b>	<b>32,850</b>	<b>3,333</b>
Antrim	789	740	170	0	570	49
Ards	1,276	1,122	193	11	918	154
Armagh	1,171	1,064	191	10	863	107
Ballymena	1,061	943	200	0	743	118
Ballymoney	597	548	68	10	470	49
Banbridge	580	507	109	9	388	73
Belfast	9,547	9,157	912	86	8,159	390
Carrickfergus	735	685	150	0	536	50
Castlereagh	914	807	117	5	685	107
Coleraine	1,536	1,339	264	19	1,055	197
Cookstown	551	510	68	22	421	41
Craigavon	1,614	1,475	294	34	1,146	139
Derry	4,822	4,535	474	49	4,012	287
Down	1,355	1,201	181	6	1,015	154
Dungannon	858	808	164	5	640	50
Fermanagh	1,900	1,737	251	6	1,480	163
Larne	663	605	143	12	450	58
Limavady	993	918	207	11	700	75
Lisburn	1,920	1,750	263	10	1,477	170
Magherafelt	719	653	138	6	509	66
Moyle	506	448	24	0	424	58
Newry & Mourne	2,435	2,295	272	21	2,001	140
Newtownabbey	1,446	1,227	295	14	917	219
North Down	1,349	1,156	230	6	921	193
Omagh	1,471	1,343	159	15	1,169	128
Strabane	1,426	1,329	122	24	1,183	97

Note: The allocation of allowances to District Council is based on the postcode of the recipient. There is evidence that this process is not equally accurate for all District Councils.

**Table 4.2: JSA claimants at August 2001: by District Council and benefit position**

District Council	All Claimants ( ' 000 = 100%)	Type of unemployment related benefit				
		All with benefit	Contribution based only	Contribution and income based	Income based only	No benefit in payment
<b>All</b>	<b>42,234</b>	<b>92.1%</b>	<b>13.4%</b>	<b>0.9%</b>	<b>77.8%</b>	<b>7.9%</b>
Antrim	789	93.8%	21.6%	0.0%	72.2%	6.2%
Ards	1,276	88.0%	15.1%	0.9%	72.0%	12.0%
Armagh	1,171	90.9%	16.3%	0.8%	73.7%	9.1%
Ballymena	1,061	88.9%	18.9%	0.0%	70.0%	11.1%
Ballymoney	597	91.8%	11.3%	1.7%	78.8%	8.2%
Banbridge	580	87.4%	18.8%	1.6%	67.0%	12.6%
Belfast	9,547	95.9%	9.6%	0.9%	85.5%	4.1%
Carrickfergus	735	93.2%	20.3%	0.0%	72.9%	6.8%
Castlereagh	914	88.2%	12.8%	0.5%	74.9%	11.8%
Coleraine	1,536	87.2%	17.2%	1.3%	68.7%	12.8%
Cookstown	551	92.6%	12.3%	3.9%	76.4%	7.4%
Craigavon	1,614	91.4%	18.2%	2.1%	71.0%	8.6%
Derry	4,822	94.0%	9.8%	1.0%	83.2%	6.0%
Down	1,355	88.7%	13.4%	0.4%	74.9%	11.3%
Dungannon	858	94.2%	19.1%	0.6%	74.6%	5.8%
Fermanagh	1,900	91.4%	13.2%	0.3%	77.9%	8.6%
Larne	663	91.2%	21.5%	1.8%	67.9%	8.8%
Limavady	993	92.4%	20.9%	1.1%	70.4%	7.6%
Lisburn	1,920	91.1%	13.7%	0.5%	76.9%	8.9%
Magherafelt	719	90.8%	19.2%	0.8%	70.8%	9.2%
Moyle	506	88.6%	4.8%	0.0%	83.8%	11.4%
Newry & Mourne	2,435	94.2%	11.2%	0.9%	82.2%	5.8%
Newtownabbey	1,446	84.9%	20.4%	1.0%	63.4%	15.1%
North Down	1,349	85.7%	17.0%	0.4%	68.3%	14.3%
Omagh	1,471	91.3%	10.8%	1.0%	79.4%	8.7%
Strabane	1,426	93.2%	8.5%	1.7%	82.9%	6.8%

Note: The allocation of allowances to District Council is based on the postcode of the recipient. There is evidence that this process is not equally accurate for all District Councils.



**Table 4.3: JSA claimants at August 2001: by District Council and as a percentage of the working age population**

District Council	All Claimants (* 000 = 100%)	Working age Population *	Claimants as % of Population
<b>All</b>	<b>42,234</b>	<b>1,030,400</b>	<b>4.1%</b>
Antrim	789	32,900	2.4%
Ards	1,276	45,500	2.8%
Armagh	1,171	33,100	3.5%
Ballymena	1,061	37,000	2.9%
Ballymoney	597	15,900	3.8%
Banbridge	580	25,700	2.3%
Belfast	9,547	165,800	5.8%
Carrickfergus	735	23,800	3.1%
Castlereagh	914	40,200	2.3%
Coleraine	1,536	34,300	4.5%
Cookstown	551	19,200	2.9%
Craigavon	1,614	48,900	3.3%
Derry	4,822	65,300	7.4%
Down	1,355	38,400	3.5%
Dungannon	858	29,300	2.9%
Fermanagh	1,900	34,300	5.5%
Larne	663	18,900	3.5%
Limavady	993	19,700	5.0%
Lisburn	1,920	68,500	2.8%
Magherafelt	719	23,300	3.1%
Moyle	506	9,300	5.4%
Newry & Mourne	2,435	52,400	4.6%
Newtownabbey	1,446	50,700	2.9%
North Down	1,349	45,700	3.0%
Omagh	1,471	29,100	5.1%
Strabane	1,426	23,200	6.1%

\* =Mid 2000 estimates. Population of working age. Namely 16-59 for Females, and ages 16-64 for Males.

Note: The allocation of allowances to District Council is based on the postcode of the recipient.

There is evidence that this process is not equally accurate for all District Councils.



**Table 4.4: JSA claimants at August 2001: by Social Security Office and benefit position**

Social Security Office	All Claimants ( ' 000 = 100%)	Type of unemployment related benefit				
		All with benefit	Contribution based only	Contribution and income based	Income based only	No benefit in payment
<b>All</b>	<b>42,234</b>	<b>38,901</b>	<b>5,660</b>	<b>391</b>	<b>32,850</b>	<b>3,333</b>
Antrim	998	905	216	5	685	93
Armagh	1,063	982	160	10	812	82
Ballymena	1,140	1,018	210	0	808	121
Ballymoney	919	846	83	10	753	73
Ballynahinch	313	248	37	0	211	65
Banbridge	563	485	91	9	385	78
Bangor	1,358	1,163	224	11	928	194
Belfast - Andersonstown	2,110	2,046	198	5	1,843	65
Belfast - Corporation Street	2,202	2,081	177	41	1,863	121
Belfast - Falls Road	1,633	1,602	71	0	1,532	30
Belfast - Holywood Road	1,609	1,437	243	0	1,194	173
Belfast - Knockbreda	1,041	947	134	20	793	93
Belfast - Shaftsbury Square	1,500	1,434	171	10	1,253	66
Belfast - Shankill Road	1,371	1,346	96	10	1,240	25
Carrickfergus	732	670	144	0	526	62
Coleraine	1,632	1,411	269	19	1,122	221
Cookstown	445	414	57	16	341	31
Downpatrick	733	667	110	6	552	66
Dungannon	721	682	134	11	537	40
Enniskillen	2,029	1,851	281	11	1,559	178
Kilkeel	183	173	10	5	158	10
Larne	632	580	143	12	426	52
Limavady	900	834	202	11	621	66
Lisburn	977	856	208	10	638	121
Lisnagelvin	1,426	1,290	149	26	1,115	136
Londonderry / Foyle	3,503	3,338	335	23	2,980	166
Lurgan	1,067	968	206	24	737	99
Magherafelt	812	746	150	6	590	66
Newcastle	418	369	54	0	316	49
Newry	2,228	2,108	262	16	1,830	120
Newtownabbey	1,277	1,105	255	15	836	171
Newtownards	1,091	982	171	6	805	110
Omagh	1,441	1,313	159	10	1,144	128
Portadown	739	669	134	10	525	70
Strabane	1,427	1,335	117	24	1,194	92

**Table 4.5: JSA claimants at August 2001: by Social Security Office and benefit position**

Social Security Office	All Claimants ( ' 000 = 100%)	Type of unemployment related benefit				
		All with benefit	Contribution based only	Contribution and income based	Income based only	No benefit in payment
<b>All</b>	<b>42,234</b>	<b>92.1%</b>	<b>13.4%</b>	<b>0.9%</b>	<b>77.8%</b>	<b>7.9%</b>
Antrim	998	90.7%	21.6%	0.5%	68.6%	9.3%
Armagh	1,063	92.3%	15.0%	0.9%	76.4%	7.7%
Ballymena	1,140	89.3%	18.4%	0.0%	70.9%	10.7%
Ballymoney	919	92.1%	9.0%	1.1%	82.0%	7.9%
Ballynahinch	313	79.3%	12.0%	0.0%	67.3%	20.7%
Banbridge	563	86.1%	16.1%	1.6%	68.3%	13.9%
Bangor	1,358	85.7%	16.5%	0.8%	68.4%	14.3%
Belfast - Andersonstown	2,110	96.9%	9.4%	0.2%	87.3%	3.1%
Belfast - Corporation Street	2,202	94.5%	8.0%	1.8%	84.6%	5.5%
Belfast - Falls Road	1,633	98.2%	4.3%	0.0%	93.8%	1.8%
Belfast - Holywood Road	1,609	89.3%	15.1%	0.0%	74.2%	10.7%
Belfast - Knockbreda	1,041	91.0%	12.9%	1.9%	76.2%	9.0%
Belfast - Shaftsbury Square	1,500	95.6%	11.4%	0.7%	83.5%	4.4%
Belfast - Shankill Road	1,371	98.2%	7.0%	0.7%	90.4%	1.8%
Carrickfergus	732	91.6%	19.7%	0.0%	71.9%	8.4%
Coleraine	1,632	86.4%	16.5%	1.2%	68.8%	13.6%
Cookstown	445	93.0%	12.7%	3.6%	76.7%	7.0%
Downpatrick	733	91.0%	15.0%	0.8%	75.2%	9.0%
Dungannon	721	94.5%	18.6%	1.5%	74.5%	5.5%
Enniskillen	2,029	91.2%	13.9%	0.5%	76.8%	8.8%
Kilkeel	183	94.5%	5.5%	2.9%	86.2%	5.5%
Larne	632	91.8%	22.6%	1.9%	67.4%	8.2%
Limavady	900	92.7%	22.5%	1.2%	69.0%	7.3%
Lisburn	977	87.6%	21.3%	1.1%	65.3%	12.4%
Lisnagelvin	1,426	90.4%	10.4%	1.8%	78.2%	9.6%
Londonderry / Foyle	3,503	95.3%	9.6%	0.7%	85.1%	4.7%
Lurgan	1,067	90.7%	19.3%	2.3%	69.1%	9.3%
Magherafelt	812	91.8%	18.5%	0.7%	72.7%	8.2%
Newcastle	418	88.3%	12.8%	0.0%	75.5%	11.7%
Newry	2,228	94.6%	11.8%	0.7%	82.1%	5.4%
Newtownabbey	1,277	86.6%	20.0%	1.1%	65.5%	13.4%
Newtownards	1,091	90.0%	15.7%	0.5%	73.8%	10.0%
Omagh	1,441	91.1%	11.0%	0.7%	79.4%	8.9%
Portadown	739	90.5%	18.1%	1.3%	71.1%	9.5%
Strabane	1,427	93.5%	8.2%	1.7%	83.6%	6.5%

**Table 5.1: JSA claimants by Government Office Region:  
August 2000 and August 2001**

*Thousands*

GOR	Aug 2000	Aug 2001	Annual % change
<b>United Kingdom</b>	<b>1,090</b>	<b>973</b>	<b>-10.7</b>
North East	71	62	-13.5
North West	138	125	-9.4
Yorks & Humberside	106	97	-9.2
East Midlands	70	63	-8.9
West Midlands	111	100	-9.5
East	62	54	-13.3
London	173	155	-10.6
South East	77	65	-15.3
South West	59	51	-13.6
Wales	58	50	-12.5
Scotland	121	109	-9.4
Northern Ireland	44	42	-4.5



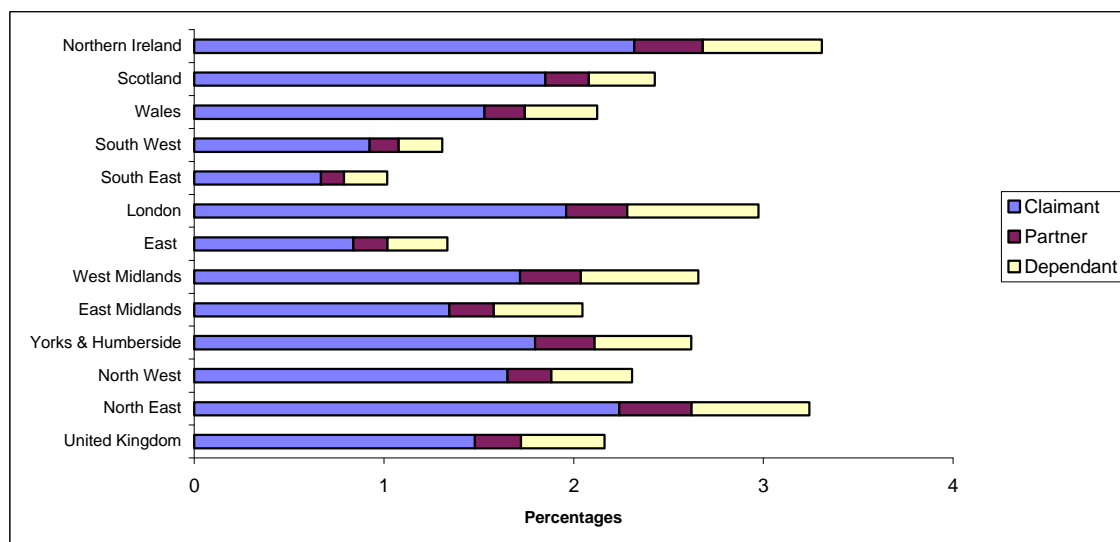
**Table 5.2: Beneficiaries of income - based JSA by type and GOR: August 2001**

*Thousands*

GOR	Type of beneficiary				Beneficiaries as % of regions population aged under state retirement age <sup>(1)</sup> %
	All	Claimant	Partner	Dependant	
<b>United Kingdom</b>	<b>1,057</b>	<b>723</b>	<b>118</b>	<b>215</b>	<b>2.2</b>
North East	69	47	8	13	3.3
North West	130	93	13	24	2.3
Yorks & Humberside	108	74	13	21	2.6
East Midlands	70	46	8	16	2.0
West Midlands	116	75	14	27	2.7
East	59	37	8	14	1.3
London	186	122	20	43	3.0
South East	67	44	8	15	1.0
South West	51	36	6	9	1.3
Wales	50	36	5	9	2.1
Scotland	104	80	10	15	2.4
Northern Ireland	47	33	5	9	3.3

<sup>(1)</sup> 65 for men and 60 for women. Based on mid-year 2000 population estimates.

**Chart 5A: Beneficiaries of income - based JSA by type as a percentage of the population aged under state retirement age <sup>(1)</sup> : August 2001**

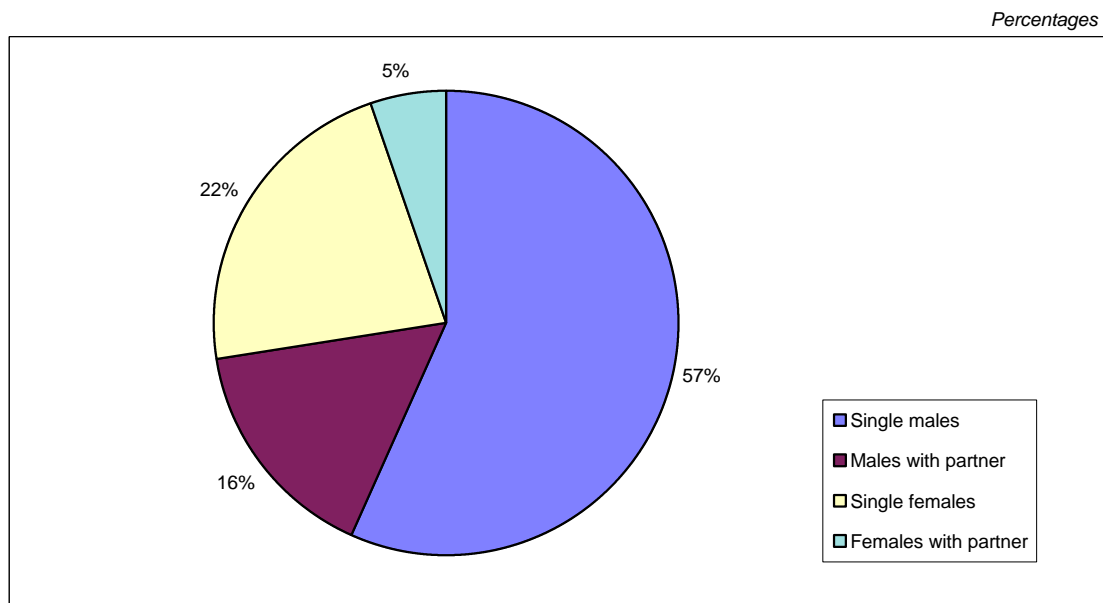


<sup>(1)</sup> 65 for men and 60 for women. Based on mid-year 2000 population estimates.

**Table 6.1 Unemployed JSA claimants by gender, marital status and benefit entitlement - August 2001**

Claimants	All Claimants ('000=100%)	All with benefit	Type of unemployment related benefit			
			Contribution based only %	Contribution and income based %	Income based only %	No benefit in payment %
<b>All</b>	<b>42,234</b>	<b>92.1</b>	13.4	0.9	77.8	7.9
<b>All males</b>	<b>30,604</b>	<b>94.0</b>	11.0	1.1	81.9	6.0
Single	23,904	97.0	11.5	0.2	85.3	3.0
With partner	6,700	83.5	9.2	4.3	70.1	16.5
<b>All females</b>	<b>11,630</b>	<b>87.0</b>	19.7	0.5	66.8	13.0
Single	9,432	94.2	13.5	0.5	80.2	5.8
With partner	2,198	56.1	46.0	0.7	9.5	43.9

**Chart 6A: Unemployed JSA claimants by gender and marital status - August 2001**



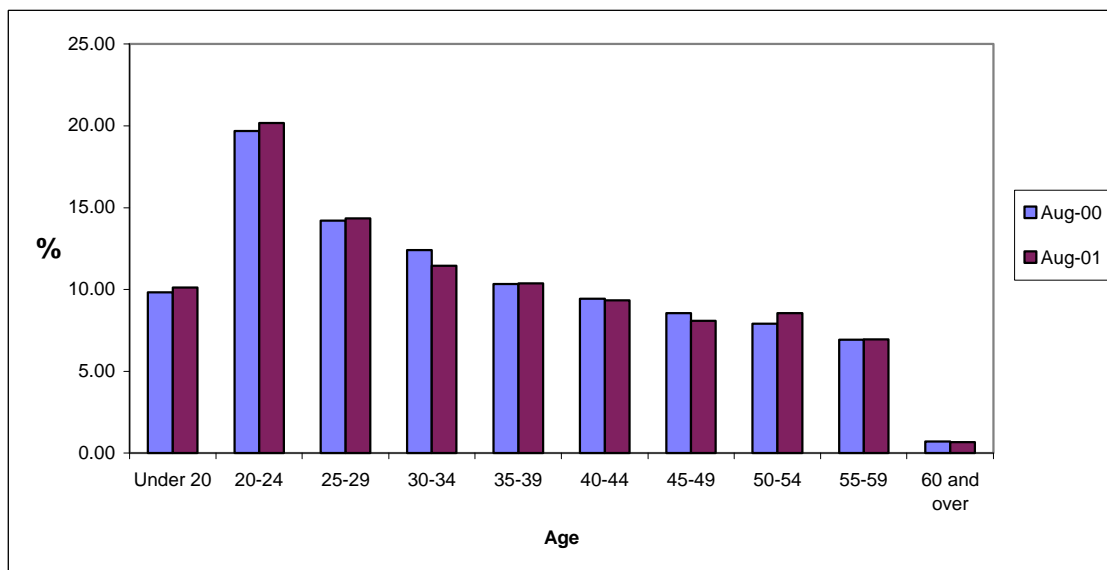
**Table 6.2 Unemployed JSA claimants by age and benefit entitlement - August 2001**

Claimants age	All Claimants (*000=100%)	All with benefit	Type of unemployment related benefit			
			Contribution based only %	Contribution and income based %	Income based only %	No benefit in payment %
<b>All ages</b>	<b>42,234</b>	<b>92.1</b>	13.4	0.9	77.8	7.9
Under 20	4,275	96.3	0.8	0.1	95.4	3.7
20-24	8,521	95.1	17.6	0.2	77.3	4.9
25-29	6,054	94.8	20.7	0.8	73.3	5.2
30-34	4,830	93.6	15.5	1.4	76.6	6.4
35-39	4,380	94.3	11.9	1.5	80.9	5.7
40-44	3,940	92.6	11.7	2.3	78.5	7.4
45-49	3,416	90.3	11.4	1.5	77.4	9.7
50-54	3,607	84.4	10.8	0.4	73.2	15.6
55-59	2,933	77.3	9.6	0.8	67.0	22.7
60 and over	279	87.1	27.6	1.7	57.8	12.9

**Table 6.3: Unemployed claimants by gender and age:  
August 2000 and August 2001**

Claimants age	Aug-00		Aug-01		Men %	Women %
	Total ('000=100%)	Men %	Total ('000=100%)	Men %		
<b>All ages</b>	<b>44,123</b>	72.7	27.3	<b>42,234</b>	72.5	27.5
Under 20	4,341	59.6	40.4	4,275	59.3	40.7
20-24	8,680	64.2	35.8	8,521	64.0	36.0
25-29	6,266	74.8	25.2	6,054	73.0	27.0
30-34	5,468	82.0	18.0	4,830	81.7	18.3
35-39	4,563	83.2	16.8	4,380	83.7	16.3
40-44	4,165	77.4	22.6	3,940	75.9	24.1
45-49	3,771	74.1	25.9	3,416	74.4	25.6
50-54	3,491	72.0	28.0	3,607	74.0	26.0
55-59	3,062	69.5	30.5	2,933	71.7	28.3
60 and over	316	100.0	0.0	279	100.0	0.0

**Chart 6B: Unemployed claimants by gender and age:  
August 2000 and August 2001**



**Table 7.1: Unemployed claimants with contribution-based benefit entitlement (1) by average weekly amount - 1997-2001**

	All		Personal claim only (2)	
	Number	Average amount £pw	Number	Average amount £pw
<b>JSA(1)</b>				
Aug-97	7,220	£46.27	7,220	£46.27
Aug-98	7,395	£47.27	7,395	£47.27
Aug-99	5,921	£48.42	5,921	£48.42
Aug-00	5,795	£48.65	5,795	£48.65
Aug-01	6,050	£49.58	6,050	£49.58

1. Includes claimants in receipt of income-based JSA who would be entitled to the contributory element.

2. Adult dependency increase is not payable to claimants coming onto benefit after October 1996 and ceased in April 1997.



**Table 7.2: Unemployed claimants with income-based benefit (1) by average weekly amount - 1997-2001**

	All		Single without dependants		Couple without dependants		Single or couple with dependants	
	Number	Average amount £pw	Number	Average amount £pw	Number	Average amount £pw	Number	Average amount £pw
<b>JSA(1)</b>								
Aug-97	54,319	£57.73	41,602	£45.04	3,777	£63.96	8,940	£114.15
Aug-98	50,198	£60.73	37,801	£46.58	3,391	£73.22	9,006	£115.40
Aug-99	42,956	£61.45	33,559	£47.93	2,470	£81.83	6,927	£119.70
Aug-00	35,315	£60.28	28,922	£48.34	1,683	£81.39	4,711	£126.04
Aug-01	33,241	£61.56	27,482	£49.26	1,497	£87.34	4,262	£131.77

1. Includes claimants in receipt of income-based JSA who would be entitled to the contributory element. Only the amount of income-based award above the level of contributon based award is included.

**Chart 7A: Average weekly amount of JSA in payment by benefit and family type - August 2001**



## ANNEX 1: TECHNICAL DETAILS

A 20% sample of all claimants of JSA is conducted on the second Thursday in February, May, August and November of each year. The sample data are used to make estimates of the total number of JSA claimants in Northern Ireland.

The JSA QSE covers all unemployed people who claim JSA, including credits only cases. The JSA QSE also collects data on participants of government training schemes. However, analysis of this group is not yet possible.

The data is extracted from the JSA payment system (JSAPS). Claimants are selected for the sample based on National Insurance endings. The same endings are used each quarter to ensure continuity. The data is physically extracted from JSAPS 21 days after the enquiry date. This allows for claims, which had not been put on the system at the enquiry date, or claims, which had ended before the enquiry date and should have been excluded.

The Department of Enterprise Trade and Investment (DETI) unemployment count is used to gross up the sample. The JSA QSE is taken from the same source as the DETI unemployed claimant count. The DETI count also includes clerically processed claims, which means these are also reflected in the results. Temporarily stopped cases are now omitted for post-JSA cases, as these on average number less than fifty. Both the JSA QSE and the DETI count allow 21 days after the enquiry date for late claims and early terminations.

Automated validation checks have been carried out on data from May 1998 only. The JSA QSE is designed to cover all people who claim JSA, including those on government training schemes, however the training scheme cases are not included in this analysis. The data are not seasonally adjusted. DETI produce a headline count of claimant unemployment each month. DETI exclude claimants on government training schemes in their count. Data from each can be used to complement one another to provide consistent estimates of the number of unemployed JSA claimants.

## **ANNEX 2: BACKGROUND TO JSA**

Jobseeker's Allowance (JSA) replaced Unemployment Benefit and Income Support for unemployed people on 7 October 1996. JSA is for people who are unemployed or working less than 16 hours a week, are available for work for at least 40 hours a week, actively looking for work, and people on a Government training scheme. They must not be in relevant education and be under pensionable age (i.e. 60 years for females and 65 for males). Young people aged 16-17 are generally excluded from claiming, however there are exceptions such as suffering severe hardship.

There are two routes of entry into JSA, contribution-based JSA and income-based JSA. Contribution-based is payable for up to 6 months to those people who have paid sufficient national insurances and is taxable. Income-based JSA is means-tested and taxable. It is usually paid when someone does not qualify for contribution-based or as a top up to contribution-based JSA. Claimants can not claim both income-based and contribution-based JSA, however in this publication we have classified claimants who receive income-based JSA but who have underlying rights to contribution-based JSA into a group on their own.

Credits are awarded for each week of claiming JSA. Credits can be awarded even though the person is not being paid JSA. This is the case when either they have not paid enough contributions, they already have received their full entitlement of contribution-based JSA, they are not entitled to income-based JSA or they choose not to claim JSA.

Benefit may be disallowed if the claimant does not fulfil the basic 'labour market' conditions. In some cases even if you do satisfy the basic conditions your benefit may be 'sanctioned' and payment stopped for a limited period. In this instance you may be eligible for a hardship payment which is a reduced rate income-based JSA payment.

### ANNEX 3: SAMPLING ERRORS

The estimates in the tables in this report are based on a 20% sample and are therefore subject to 'sampling error', i.e. the number of cases in the sample may produce rated up population estimates which are lower or higher than the true population value.

An indication of the effect of these sampling errors can be gained from the tables of 'confidence intervals' shown below. The figures shown in this report are a best estimate based on the sample data. The true number will lie somewhere in a range around this estimate. The size of this range is based on a "95% confidence interval" i.e. there is a 1 in 20 chance that the true value lies outside this range. Thus, for example, an estimate of 1,000 is really showing that the true value could lie anywhere in the range of 876 to 1,124. This applies only to estimates of numbers of cases and not to other features, e.g. amounts of benefit.

The figures in the table below give the 95% confidence intervals for the true value in the population, based on the estimated value from the 5% sample.

Estimated Value	95% Confidence Interval (+/-)	Confidence interval as a % of the estimate (+/-)
<i>150</i>	<i>48</i>	<i>32</i>
<i>300</i>	<i>68</i>	<i>23</i>
<i>400</i>	<i>78</i>	<i>20</i>
<i>500</i>	<i>88</i>	<i>18</i>
<i>600</i>	<i>96</i>	<i>16</i>
<i>700</i>	<i>104</i>	<i>15</i>
<i>800</i>	<i>111</i>	<i>14</i>
<i>900</i>	<i>118</i>	<i>13</i>
<i>1000</i>	<i>124</i>	<i>12</i>
<i>2000</i>	<i>175</i>	<i>9</i>
<i>3000</i>	<i>215</i>	<i>7</i>
<i>4000</i>	<i>248</i>	<i>6</i>
<i>5000</i>	<i>277</i>	<i>6</i>
<i>6000</i>	<i>304</i>	<i>5</i>
<i>7000</i>	<i>328</i>	<i>5</i>
<i>8000</i>	<i>351</i>	<i>4</i>
<i>9000</i>	<i>372</i>	<i>4</i>
<i>10000</i>	<i>392</i>	<i>4</i>
<i>20000</i>	<i>554</i>	<i>3</i>
<i>30000</i>	<i>679</i>	<i>2</i>
<i>40000</i>	<i>784</i>	<i>2</i>
<i>50000</i>	<i>877</i>	<i>2</i>

*Warning: Figures in italics should be used with caution*

## List of Tables

### Section 1: Caseload by benefit entitlement

Table 1.1 Unemployed Claimants by benefit entitlement - 1996 to 2001

Table 1.2 Unemployed Claimants by benefit entitlement - 1996 to 2001

### Section 2: Duration of claim

Table 2.1 Unemployed Claimants by duration of claim - August 1998 to August 2001

Table 2.2 Unemployed Claimants by benefit entitlement and duration of current claim – August 2001

Table 2.3 Unemployed Claimants by gender, age and duration of current claim - August 2001

### Section 3: Claims without contribution and income-based benefit

Table 3.1 Unemployed Claimants : receipt/non-receipt of contribution-based benefit by gender - August 2000 and August 2001

Table 3.2 Unemployed Claimants not in receipt of contribution-based benefit by gender and benefit reason - August 2000 and August 2001

Table 3.3 Unemployed Claimants : receipt/non-receipt of unemployment-related benefit by gender - August 2000 and August 2001

Table 3.4 Unemployed Claimants not in receipt of unemployment-related benefit by gender and benefit reason - August 2000 and August 2001

### Section 4: District Council and Social Security Office analysis

Table 4.1 JSA Claimants at August 2001: by District Council and benefit position

Table 4.2 JSA Claimants at August 2001: by District Council and benefit position

Table 4.3 JSA Claimants at August 2001: by District Council and as a percentage of the working age population



Table 4.4 JSA Claimants at August 2001: by Social Security Office and benefit position

Table 4.5 JSA Claimants at August 2001: by Social Security Office and benefit position

### **Section 5: United Kingdom Regional analysis**

Table 5.1 JSA Claimants by Government Office Region: August 2000 and August 2001

Table 5.2 Beneficiaries of income-based JSA by type and Government Office Region: August 2001

### **Section 6: Gender, age and marital status**

Table 6.1 Unemployed JSA Claimants by gender, marital status and benefit entitlement - August 2001

Table 6.2 Unemployed JSA Claimants by age and benefit entitlement - August 2001

Table 6.3 Unemployed Claimants by gender and age - August 2000 and August 2001

### **Section 7: Amounts of Benefit**

Table 7.1 Unemployed Claimants with contribution-based benefit entitlement by average weekly amount – 1997 - 2001

Table 7.2 Unemployed Claimants with income-based benefit by average weekly amount – 1997 - 2001

**ISSN 1475-5769**