

Department for Social Development

**Jobseeker's
Allowance
Summary Statistics**

DSD

**Department for
Social Development**

February 2001



A National Statistics Publication

Department for Social Development

**Jobseeker's
Allowance
Summary Statistics**

February 2001



Published BY

Statistics & Research Branch
Department for Social Development
Room 3 Block 4,
The Village, Stormont,
Belfast, BT4 3SJ

Telephone: 02890 5/22803
GTN (440) 22803
Fax: 02890 5/22763
e-mail: srb@dndi.gov.uk

ISBN 1475-5769

Further Statistics for Northern Ireland relating to Social Security Benefits can be obtained by visiting our website;
<http://www.dndi.gov.uk/srb/index.html>

Statistics relating to Social Security Benefits in Great Britain can be obtained by visiting the following website;
<http://www.dss.gov.uk/asd/online.html>



Contents

	Page
Introduction	3
Glossary of terms and conventions	4
Main Findings	6
Section 1: Caseload by Benefit entitlement	9
Section 2: Duration of Claim	11
Section 3: Claimants without contribution and income-based benefit	14
Section 4: District Council and Social Security Office Analysis.....	18
Section 5: United Kingdom Regional Analysis	23
Section 6: Gender, age and marital status	25
Section 7: Amounts of benefit	28
Annex 1: Technical details.....	30
Annex 2: Background to JSA.....	31
Annex 3: Sampling Errors.....	32
List of Tables	33



Introduction

This publication presents data from the Jobseeker's Allowance (JSA) Quarterly Statistical Enquiry (QSE), and also historical data on unemployed claimants of Unemployment Benefit and Income Support. Data is based on a 20% sample of all JSA claimants which is conducted on the second Thursday of February, May, August and November. The publication provides numbers of unemployed claimants for each quarter from February 1996 through to February 2001 with the exception of November 1996 which is unavailable. There is a more in-depth analysis for February 2001 and comparisons with the previous year.

Jobseeker's Allowance (JSA) replaced Unemployment Benefit and Income Support for unemployed people on 7 October 1996. JSA can be claimed by people who are available for and actively seeking employment, including those in work for less than 16 hours a week on average, and by people on a Government training scheme. They must not be in relevant education and must be under pensionable age (i.e. 60 years for females and 65 for males). Young people aged 16-17 are generally excluded from claiming, however there are exceptions such as suffering severe hardship (See Annexe 2 for more details).

Jobseeker's Allowance data is extracted from the JSA payment system (JSAPS). Unemployment Benefit data is extracted from the National Unemployment Benefits System (NUBS). Claimants are selected for the 20% sample based on National Insurance number endings. The Department of Enterprise Trade and Investment (DETI) unemployment count is used to gross up the sample (See Technical Details in Annexe 1).

Further advice on analysis can be obtained from the contact point on page 3.



Glossary of Terms and Conventions

Glossary of Terms

Benefit entitlement

Contribution-based:-

Benefit based on National Insurance contributions paid at a personal rate for up to 6 months.

Income-based:-

Benefit based on claimants and dependants needs payable for as long as qualifying conditions are met.

Contribution and income-based:-

A claimant can receive either contribution or income-based benefit, but not both. However for the purposes of this publication, claimants who satisfy the conditions for contribution-based JSA, but receive income-based JSA are shown separately.

Child

A dependant aged under 16. (Also dependants aged 16-18 for whom Child Benefit is in receipt).

Couple

Two persons either married or living together as husband and wife.

Dependant

A person who is not a *Partner* and whose resources and requirements are included with those of the claimant.

Disallowances

Refusals of claims to benefit because of failure to satisfy the qualifying conditions.

Duration of claim

The length of time a claimant has been unemployed in the current claim.



Income Support (IS)

Income Support is an income-related benefit which provides financial help for people who are not required to be available for work, are not in remunerative work and whose income from all sources is below a minimum level set by parliament. JSA replaced Income Support for the unemployed in October 1996.

Marital status

Whether the claimant is without a partner (single) or with a partner (couple) - see Partner.

Partner

One of a married or unmarried couple, living together.

Sanctions

The non-payment of JSA for a specified period because the jobseeker has unreasonably caused or perpetuated their own unemployment.

Single

A claimant who is not living as one of a couple.

Unemployment related benefits

Benefits paid due to unemployment. From October 1996 they are Jobseeker's Allowance, including JSA (Cont), JSA (IB) or Hardship payments. Prior to October 1996 they were Unemployment Benefit and/or Income Support.

Conventions

JSA	Jobseeker's Allowance
JSA (Cont)	Contribution-based JSA
JSA (IB)	Income-based JSA
IS	Income Support
GOR	Government Office Region
-	Nil or Negligible
.	Not applicable
n/a	Not available
<i>Italics</i>	<i>Counts in italics are not statistically reliable</i>



Main findings

This section summarises the key findings of the February 2001 JSA Summary Statistics.

Section 1 - Caseload and benefit entitlement

The overall number of unemployed claimants fell by over three thousand (3,047) between February 2000 and February 2001 to 40,971. The majority of this reduction in numbers was accounted for by recipients of income-based benefit - a fall of 2,881 in the year to February 2001.

The proportion of the overall caseload in receipt of only contribution-based JSA increased to 11.8% in February 2001, from 10.9% in the previous year. This figure is lower than that of Great Britain, which has a proportion of the overall caseload in receipt of only contribution-based benefit of 16.1%.

Section 2 - Duration of claim

There was a slightly higher proportion of claims of short duration (less than 3 months) in February 2001, 30.7% compared to 30.2% a year earlier. Claims of less than 3 months are a proxy for new claims.

There was also a smaller proportion of claims of more than a year in February 2001 (31.9%) than in February 2000 (35.1%). This was also the case in Great Britain, with claims of long duration (more than one year) falling to 21.2% of the overall caseload, from 25.0% in the previous year.

Between February 1998 and February 2001 the proportion of JSA claimants who had been out of work for one year or more decreased from 46.3% to 31.9% of all JSA claimants. Some of this decrease will be due to changing economic circumstances. But, it will also be impacted upon by the introduction of the New Deal for 18 to 24 year olds and the New Deal for 25+ both of which are designed to assist the longer-term unemployed into work or training.

When compared with the corresponding figures for Great Britain, Northern Ireland is shown to have a greater proportion of claims of long duration (more than one year), namely 31.9% of the overall caseload in February 2001, compared to the GB figure of 21.2%.

Almost two thirds (60.2%) of female and almost half (47.0%) of male unemployed claimants had a current claim duration of less than 6 months in February 2001, with a far greater percentage of males having a claim duration of over 1 year.



Section 3 - Claimants without contribution and/or income-based benefit

The proportion of claimants not receiving contribution-based benefit has decreased to 87.4% in February 2001 from 88.0% in the previous year. The main reasons for claimants not receiving contribution-based benefit in February 2001 are contribution deficiency (64.7% of all claimants) and entitlement exhausted (18.1% of all claimants).

This was also the case in Great Britain with figures of 60.6% and 14.1% respectively.

The number of JSA claimants who are not entitled to unemployment related benefit rose slightly to 7.8% in February 2001 from 7.4% in the previous year. The corresponding figures for Great Britain between February 2000 and February 2001 rose slightly from 9.3% to 9.4% of the overall caseload. The main reason for non-entitlement once again was contribution deficiency and entitlement exhausted.

Section 4 – District Council and Social Security Office analysis

The proportion of JSA claimants with benefit varied between 84.6% in Ards to 96.3% in Belfast.

Unemployed claimants in Strabane were least likely to be in receipt of only JSA Contribution-based benefit in February 2001 (5.1% compared to 11.8% for Northern Ireland as a whole and 20.9% in Magherafelt).

The proportion of JSA claimants in receipt of only JSA Income-based benefit in February 2001 varied between 66.5% in Ards and 88.2% in Strabane.

JSA claimants as a proportion of people of working age in Northern Ireland in February 2001 was 4.0%. These proportions range from 2.2% in Banbridge to 6.8% in Derry.

Foyle Social Security Office (Londonderry) had the largest share of the JSA caseload with 3,344 claimants (8% of the total caseload) at February 2001. Kilkeel Social Security Office had only 198 claimants (0.5% of the total caseload).

Lisburn Social Security Office had the highest proportion of contribution based only claimants (20.6%) while Falls Road Social Security Office had the lowest (4.8%).



Section 5 – United Kingdom Regional analysis

JSA claimants in the United Kingdom have decreased by 12.4% in the year to February 2001. There has been a decrease in every Government Office Region, ranging from 6.2% in Wales to 19.0% in the South East.

JSA Income-based Beneficiaries as a proportion of the population under state retirement age in the United Kingdom in February 2001 was 2.4%. This is lower than the corresponding figure for Northern Ireland (3.4%). These proportions for the Government Office Regions range from 1.3% in the South East to 3.9% in the North East.

Section 6 - Gender, age and marital status

Men are more likely to claim JSA (77.1% of claimants in February 2001). This is partly because income-based benefit is claimed on behalf of couples by only one partner, normally the man. The corresponding figure for men in Great Britain in February 2001 was 76.5% of claimants.

Female unemployed claimants are more likely than males to be in receipt of only JSA contribution-based benefit in February 2001 (15.3% compared with 10.7%) but less likely to receive JSA income-based (70.2% compared to 82.3%).

The age distribution of unemployed claimants has changed very little over the year to February 2001. Over a quarter (26%) of all claimants are aged under 25, over half (57%) are aged 25-49 and just under a fifth (17%) are aged 50 or over. The figures for Great Britain with regards to age groups in February 2001 were similar.

Section 7 - Amounts of benefit

Single claimants without dependants tend to receive the lowest amounts of benefit, on average £48.86 per week for contribution-based and £48.79 for those with income-based. Recipients of income-based JSA with partners and/or dependants receive higher amounts (£81.77 for couples without dependants and £131.57 for single/couples with dependants).

However the former account for only 4% of all JSA claimants, whilst the latter account for 11%. The corresponding figures for Great Britain in February 2001, with regards to JSA with partners and dependants, are similar.



Table 1.1: Unemployed Claimants by benefit entitlement - 1996 to 2001

	<u>Type of unemployment related benefit</u>					
	All Claimants	All with benefit	Contribution based only	Contribution and income based	Income based only	No benefit in payment
Unemployment Benefit/Income Support						
Feb-96	85,744	76,997	7,704	4,241	65,052	8,747
May-96	82,713	74,210	9,820	1,431	62,959	8,503
Aug-96	93,263	83,826	12,726	1,468	69,632	9,437
Jobseeker's Allowance						
Feb-97	67,541	62,089	5,914	826	55,349	5,452
May-97	61,309	56,765	3,646	772	52,346	4,544
Aug-97	65,727	60,889	6,570	649	53,669	4,838
Nov-97	58,305	54,242	5,054	586	48,602	4,063
Feb-98	59,161	55,049	5,807	622	48,620	4,112
May-98	55,323	51,552	4,720	586	46,246	3,771
Aug-98	61,175	56,914	6,716	679	49,519	4,261
Nov-98	54,327	50,443	5,076	525	44,842	3,884
Feb-99	55,796	51,834	5,397	663	45,774	3,962
May-99	51,137	47,561	4,423	642	42,496	3,577
Aug-99	52,652	48,339	5,383	538	42,417	4,313
Nov-99	43,720	40,383	4,035	410	35,939	3,337
Feb-00	44,018	40,756	4,792	491	35,473	3,262
May-00	42,255	38,900	4,466	489	33,945	3,355
Aug-00	44,123	40,667	5,351	444	34,872	3,456
Nov-00	40,007	36,527	4,536	429	31,562	3,480
Feb-01	40,971	37,772	4,822	359	32,592	3,199

Note: No figures available for November 1996

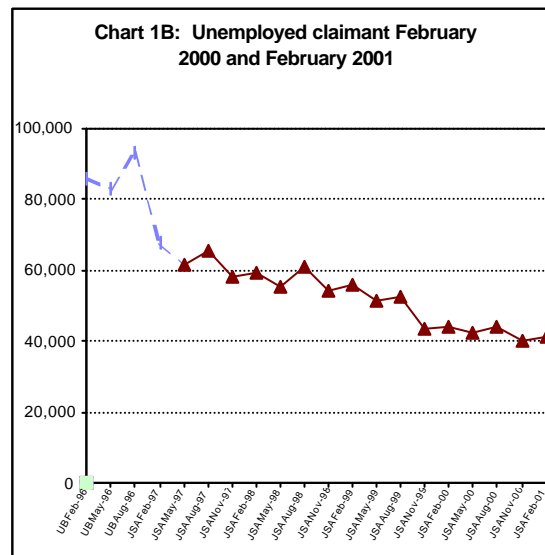
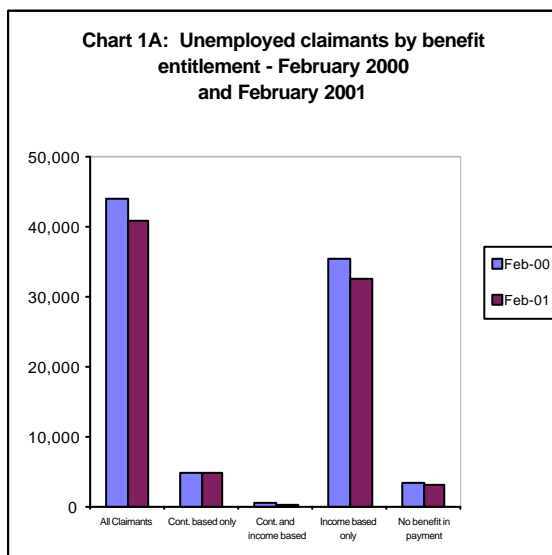


Table 1.2: Unemployed Claimants by benefit entitlement - 1996 to 2001

	All Claimants (*000=100%)	All with benefit %	Type of unemployment related benefit			
			Contribution based only %	Contribution and income based %	Income based only %	No benefit in payment %
Unemployment Benefit/Income Support						
Feb-96	85,744	89.8	9.0	4.9	75.9	10.2
Jobseeker's Allowance						
Feb-97	67,541	91.9	8.8	1.2	81.9	8.1
Feb-98	59,161	93.0	9.8	1.1	82.2	7.0
Feb-99	55,796	92.9	9.7	1.2	82.0	7.1
Feb-00	44,018	92.6	10.9	1.1	80.6	7.4
Feb-01	40,971	92.2	11.8	0.9	79.5	7.8

Chart 1C: Unemployed Claimants by benefit entitlement - 1996 to 2001

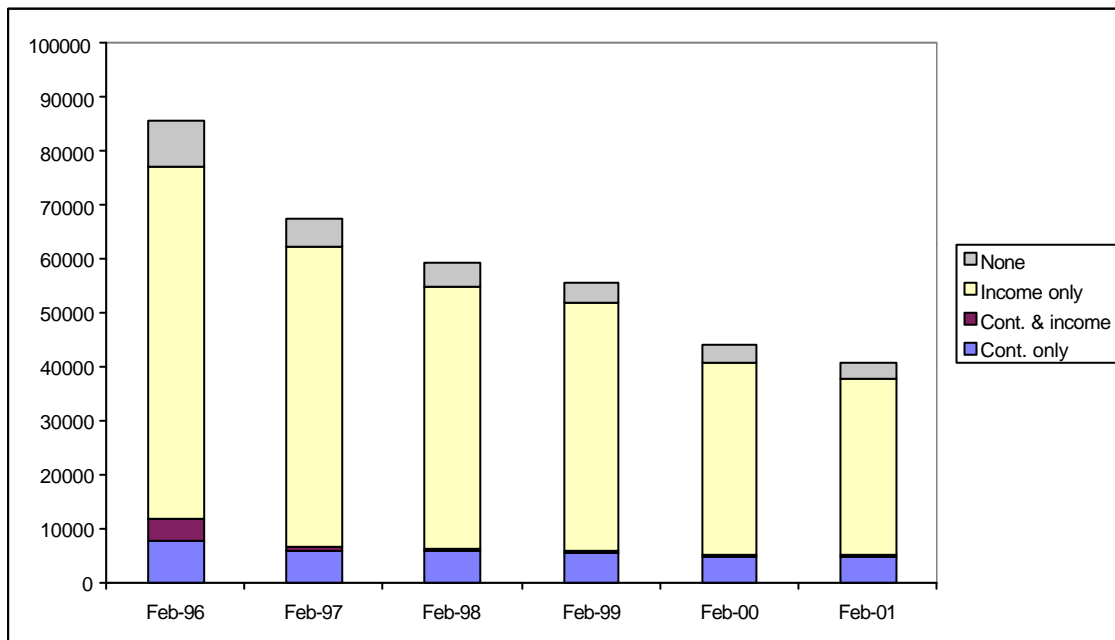


Table 2.1: Unemployed Claimants by duration of claim - February 1998 to February 2001

Duration	Feb-98	Feb-99	Feb-00	Feb-01
All claimants ('000= 100%)	59,161	55,796	44,018	40,971
Under 3 months	14,577	13,979	13,307	12,574
3 to under 6 months	8,615	9,155	7,964	7,907
6 to under 12 months	8,566	7,500	7,303	7,408
1 to under 2 years	8,177	8,181	6,503	6,200
2 years or over	19,225	16,981	8,941	6,881

Duration	Feb-98	Feb-99	Feb-00	Feb-01
All claimants ('000= 100%)	100%	100%	100%	100%
Under 3 months	24.6	25.1	30.2	30.7
3 to under 6 months	14.6	16.4	18.1	19.3
6 to under 12 months	14.5	13.4	16.6	18.1
1 to under 2 years	13.8	14.7	14.8	15.1
2 years or over	32.5	30.4	20.3	16.8

Chart 2A: Unemployed Claimants by duration of current claim - February 2001

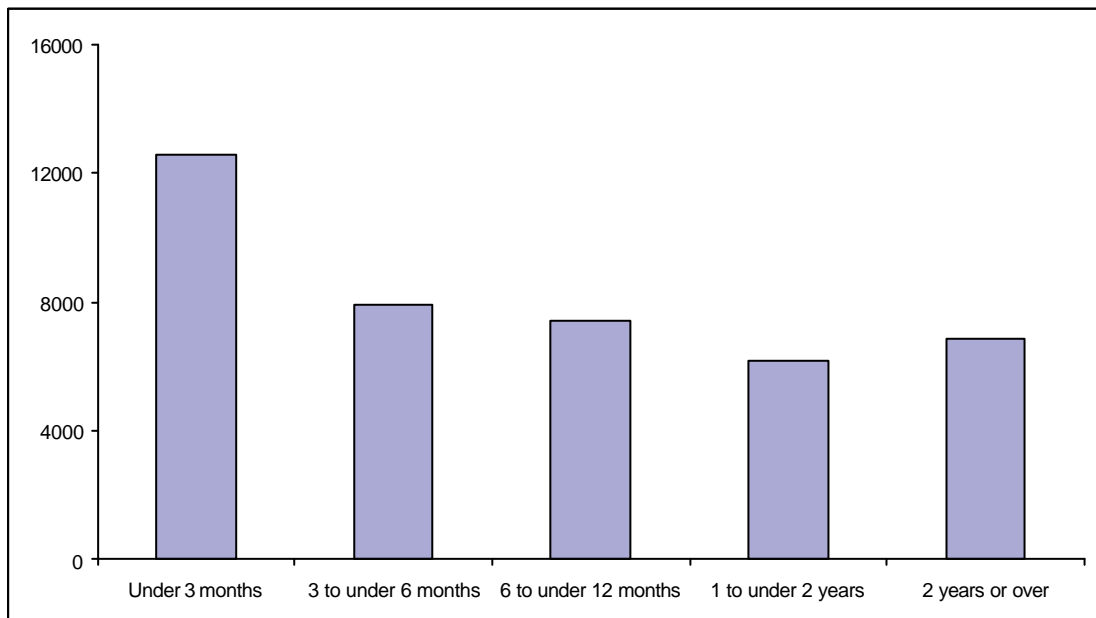


Table 2.2: Unemployed Claimants by benefit entitlement and duration of current claim - February 2001

	All Claimants	All with benefit	Type of unemployment related benefit			
			Contribution based only	Contribution and income based	Income based only	No benefit in payment
Duration						
All ('000=100%)	40,971	37,772	4,822	359	32,592	3,199
% up to 2 weeks	5.8	4.6	10.3	9.7	3.7	20.4
% 2 to under 6 weeks	12.3	12.1	27.6	19.6	9.7	14.7
% 6 to under 13 weeks	12.6	12.7	23.4	25.0	11.0	10.6
% 13 to under 26 weeks	19.3	19.5	38.6	45.7	16.3	17.4
% 26 to under 39 weeks	11.3	11.3	0.0	0.0	13.1	11.6
% 39 weeks to under 1 year	6.7	6.7	0.0	0.0	7.7	7.4
% 1 to under 2 years	15.1	15.5	0.0	0.0	17.9	11.4
% 2 years or over	16.8	17.7	0.0	0.0	20.5	6.6



Table 2.3 Unemployed Claimants by gender, age and duration of current claim - February 2001

Age	All Claimants ('000=100%)	Duration of current claim			
		Under 6 months %	6 months to under 1 year %	1 to under 2 years %	2 years or more %
All persons	40,971	50.0	18.1	15.1	16.8
Under 25	10,767	74.5	16.3	7.0	2.2
25 to 49	23,333	43.3	19.4	18.2	19.1
50 or over	6,871	34.4	16.3	17.6	31.7
Males	31,583	47.0	18.1	15.9	19.1
Under 25	7,450	73.0	17.0	7.3	2.7
25 to 49	18,905	40.3	19.5	19.0	21.2
50 or over	5,228	33.9	14.1	16.9	35.1
Females	9,388	60.2	18.2	12.7	9.0
Under 25	3,317	77.9	14.7	6.3	1.2
25 to 49	4,428	55.9	18.9	14.7	10.5
50 or over	1,643	36.0	23.3	20.0	20.7



Table 3.1 Unemployed claimants : receipt / non-receipt of contribution-based benefit by gender - February 2000 and February 2001

	Feb-00		Feb-01			
	Total	% All claimants	Total	% All claimants	% All males	% All females
All claimants	44,018	100.0	40,971	100.0	100.0	100.0
Claimants in receipt of contribution-based benefit(1)	5,283	12.0	5,181	12.6	11.8	15.6
Claimants not in receipt of contribution-based benefit	38,735	88.0	35,790	87.4	88.2	84.4

1. Includes claimants in receipt of income-based JSA, but who would also be entitled via the contributory route.



Table 3.2: Unemployed claimants not in receipt of contribution-based benefit by gender and benefit reason - February 2000 and February 2001

Reason for non-entitlement	Feb-00		Feb-01		% All males	% All females
	Total	% All claimants	Total	% All claimants		
All without JSA(C)	38,735	88.0	35,790	87.4	88.2	84.4
(% by claimants):						
Waiting days	227	0.5	333	0.8	0.7	1.2
Entitlement exhausted	8,344	19.0	7,396	18.1	19.6	12.7
Entitlement not yet determined	704	1.6	554	1.4	1.3	1.4
Contribution deficiency	28,526	64.8	26,519	64.7	64.1	66.9
Benefit disallowed or sanctioned(1)	521	1.2	542	1.3	1.3	1.2
Other	31	0.1	30	0.1	0.1	0.0

1. Includes claimants who lose entitlement because they have earnings or income above prescribed levels



Table 3.3: Unemployed claimants: receipt / non-receipt of unemployment-related benefit by gender - February 2000 and February 2001

	Feb-00		Feb-01			
	Total	% All claimants	Total	% All claimants	% All males	% All females
All claimants	44,018	100.0	40,971	100.0	100.0	100.0
Claimants in receipt of unemployment-related benefit	40,756	92.6	37,772	92.2	94.1	85.8
Claimants not in receipt of unemployment-related benefit	3,262	7.4	3,199	7.8	5.9	14.2



Table 3.4: Unemployed claimants not in receipt of unemployment-related benefit by gender and benefit reason - February 2000 and February 2001

Reason for non-entitlement	Feb-00		Feb-01			
	Total	% All claimants	Total	% All claimants	% All males	% All females
All without JSA	3,262	7.4	3,199	7.8	5.9	14.2
(% by claimants):						
Waiting days	227	0.5	333	0.8	0.7	1.2
Entitlement exhausted	1,004	2.3	880	2.1	1.2	5.2
Entitlement not yet determined	263	0.6	212	0.5	0.4	0.8
Contribution deficiency	1,077	2.4	978	2.4	1.6	4.9
Benefit disallowed or sanctioned(1)	462	1.1	473	1.2	1.2	1.1
Other	228	0.5	321	0.8	0.7	0.3

1. Includes claimants who lose entitlement because they have earnings or income above prescribed levels

Chart 3A: Unemployed JSA claimants not in receipt of any unemployment-related benefit by reason for non-payment - February 2001

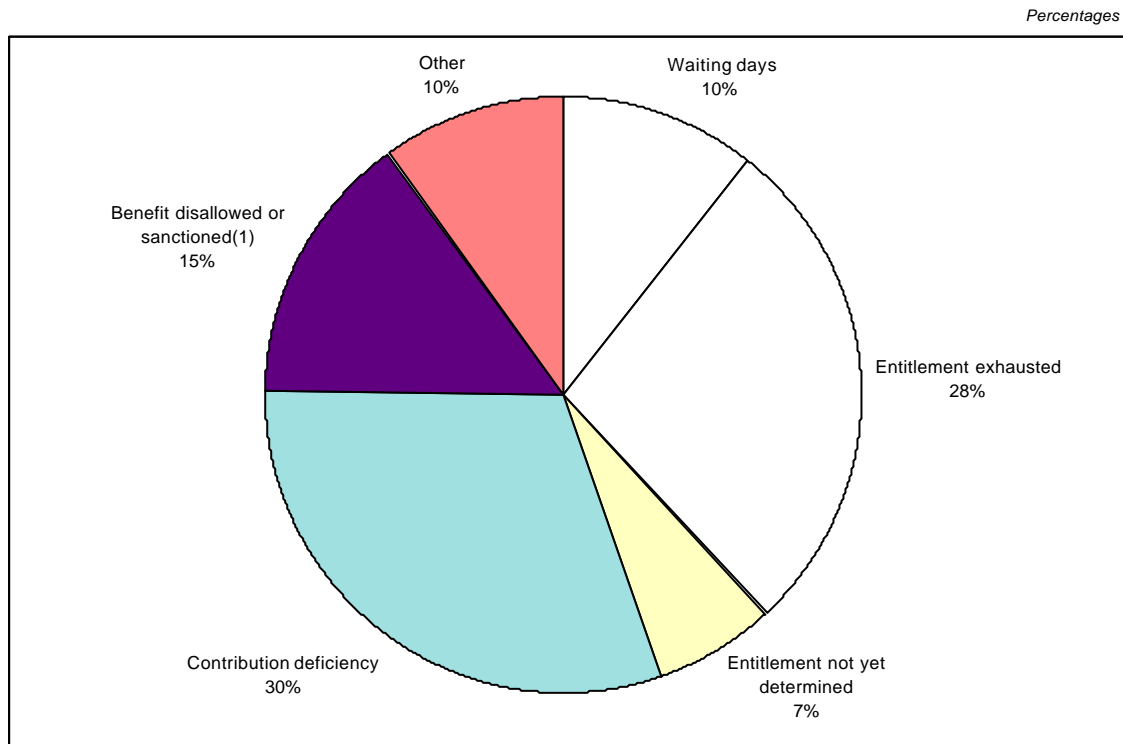


Table 4.1: JSA claimants at February 2001: by District Council and benefit position

District Council	Type of unemployment related benefit					
	All Claimants (' 000 = 100%)	All with benefit	Contribution based only	Contribution and income based	Income based only	No benefit in payment
All	40,971	37,772	4,822	359	32,592	3,199
Antrim	749	670	142	10	517	79
Ards	1,414	1,196	238	17	941	218
Armagh	1,165	1,069	137	5	927	96
Ballymena	1,012	909	145	15	749	103
Ballymoney	570	494	76	0	417	76
Banbridge	577	511	92	15	404	66
Belfast	9,630	9,269	978	90	8,201	361
Carrickfergus	662	617	115	14	489	45
Castlereagh	920	839	179	4	655	81
Coleraine	1,544	1,365	227	28	1,110	179
Cookstown	473	454	43	5	406	19
Craigavon	1,553	1,417	204	9	1,204	136
Derry	4,456	4,140	344	27	3,770	316
Down	1,372	1,208	133	10	1,065	164
Dungannon	845	787	131	9	647	58
Fermanagh	1,802	1,623	132	10	1,481	179
Larne	623	576	106	13	458	47
Limavady	910	843	112	5	726	67
Lisburn	1,920	1,760	249	10	1,501	160
Magherafelt	659	612	138	10	464	47
Moyle	497	450	57	0	394	47
Newry & Mourne	2,221	2,098	236	11	1,851	123
Newtownabbey	1,370	1,209	179	5	1,026	161
North Down	1,381	1,230	223	31	976	151
Omagh	1,331	1,194	140	0	1,054	137
Strabane	1,315	1,231	67	5	1,160	84

Note: The allocation of allowances to District Council is based on the postcode of the recipient. There is evidence that this process is not equally accurate for all District Councils.

Table 4.2: JSA claimants at February 2001: by District Council and benefit position

District Council	All Claimants (' 000 = 100%)	Type of unemployment related benefit				
		All with benefit	Contribution based only	Contribution and income based	Income based only	No benefit in payment
All	40,971	92.2%	11.8%	0.9%	79.5%	7.8%
Antrim	749	89.4%	18.9%	1.4%	69.1%	10.6%
Ards	1,414	84.6%	16.9%	1.2%	66.5%	15.4%
Armagh	1,165	91.8%	11.8%	0.4%	79.6%	8.2%
Ballymena	1,012	89.8%	14.4%	1.5%	74.0%	10.2%
Ballymoney	570	86.6%	13.4%	0.0%	73.2%	13.4%
Banbridge	577	88.6%	16.0%	2.7%	69.9%	11.4%
Belfast	9,630	96.3%	10.2%	0.9%	85.2%	3.7%
Carrickfergus	662	93.2%	17.3%	2.1%	73.9%	6.8%
Castlereagh	920	91.2%	19.5%	0.5%	71.2%	8.8%
Coleraine	1,544	88.4%	14.7%	1.8%	71.9%	11.6%
Cookstown	473	96.0%	9.1%	1.2%	85.8%	4.0%
Craigavon	1,553	91.2%	13.1%	0.6%	77.5%	8.8%
Derry	4,456	92.9%	7.7%	0.6%	84.6%	7.1%
Down	1,372	88.1%	9.7%	0.8%	77.6%	11.9%
Dungannon	845	93.2%	15.5%	1.1%	76.6%	6.8%
Fermanagh	1,802	90.1%	7.3%	0.6%	82.2%	9.9%
Larne	623	92.5%	17.0%	2.1%	73.5%	7.5%
Limavady	910	92.6%	12.3%	0.6%	79.8%	7.4%
Lisburn	1,920	91.7%	13.0%	0.5%	78.2%	8.3%
Magherafelt	659	92.9%	20.9%	1.5%	70.4%	7.1%
Moyle	497	90.6%	11.4%	0.0%	79.2%	9.4%
Newry & Mourne	2,221	94.4%	10.6%	0.5%	83.4%	5.6%
Newtownabbey	1,370	88.3%	13.0%	0.3%	74.9%	11.7%
North Down	1,381	89.0%	16.1%	2.2%	70.7%	11.0%
Omagh	1,331	89.7%	10.5%	0.0%	79.2%	10.3%
Strabane	1,315	93.6%	5.1%	0.4%	88.2%	6.4%

Note: The allocation of allowances to District Council is based on the postcode of the recipient. There is evidence that this process is not equally accurate for all District Councils.



Table 4.3: JSA claimants at February 2001: by District Council and as a percentage of the working age population

District Council	All Claimants (* 000 = 100%)	Working age Population *	Claimants as % of Population
All	40,971	1,030,400	4.0%
Antrim	749	32,900	2.3%
Ards	1,414	45,500	3.1%
Armagh	1,165	33,100	3.5%
Ballymena	1,012	37,000	2.7%
Ballymoney	570	15,900	3.6%
Banbridge	577	25,700	2.2%
Belfast	9,630	165,800	5.8%
Carrickfergus	662	23,800	2.8%
Castlereagh	920	40,200	2.3%
Coleraine	1,544	34,300	4.5%
Cookstown	473	19,200	2.5%
Craigavon	1,553	48,900	3.2%
Derry	4,456	65,300	6.8%
Down	1,372	38,400	3.6%
Dungannon	845	29,300	2.9%
Fermanagh	1,802	34,300	5.3%
Larne	623	18,900	3.3%
Limavady	910	19,700	4.6%
Lisburn	1,920	68,500	2.8%
Magherafelt	659	23,300	2.8%
Moyle	497	9,300	5.3%
Newry & Mourne	2,221	52,400	4.2%
Newtownabbey	1,370	50,700	2.7%
North Down	1,381	45,700	3.0%
Omagh	1,331	29,100	4.6%
Strabane	1,315	23,200	5.7%

* =Mid 2000 estimates. Population of working age. Namely 16-59 for Females, and ages 16-64 for Males.

Note: The allocation of allowances to District Council is based on the postcode of the recipient.

There is evidence that this process is not equally accurate for all District Councils.



Table 4.4: JSA claimants at February 2001: by Social Security Office and benefit position

Social Security Office	All Claimants (' 000 = 100%)	Type of unemployment related benefit				
		All with benefit	Contribution based only	Contribution and income based	Income based only	No benefit in payment
All	40,971	37,772	4,822	359	32,592	3,199
Antrim	909	797	131	16	650	112
Armagh	1,066	985	106	5	874	81
Ballymena	1,069	940	145	10	784	129
Ballymoney	903	827	138	0	689	76
Ballynahinch	296	243	46	0	197	53
Banbridge	541	486	102	10	373	56
Bangor	1,403	1,247	223	26	999	155
Belfast - Andersonstown	2,145	2,060	144	15	1,901	85
Belfast - Corporation Street	2,078	1,970	158	10	1,802	109
Belfast - Falls Road	1,649	1,619	79	0	1,541	30
Belfast - Holywood Road	1,822	1,707	310	35	1,362	115
Belfast - Knockbreda	934	879	185	10	684	55
Belfast - Shaftsbury Square	1,327	1,278	179	15	1,084	50
Belfast - Shankill Road	1,556	1,507	139	10	1,358	49
Carrickfergus	670	614	105	14	495	56
Coleraine	1,643	1,445	226	28	1,191	198
Cookstown	382	364	38	5	320	19
Downpatrick	786	687	66	10	610	99
Dungannon	707	649	110	5	535	58
Enniskillen	1,900	1,721	137	15	1,570	179
Kilkeel	198	176	21	0	155	21
Larne	602	562	110	13	439	40
Limavady	808	741	113	5	623	67
Lisburn	1,022	918	210	15	692	105
Lisnagelvin	1,238	1,145	116	10	1,018	93
Londonderry / Foyle	3,334	3,112	226	16	2,869	223
Lurgan	1,011	914	161	5	749	97
Magherafelt	751	704	138	10	556	47
Newcastle	416	371	41	0	330	44
Newry	1,997	1,900	198	11	1,691	96
Newtownabbey	1,258	1,117	204	10	903	141
Newtownards	1,197	1,016	207	17	792	181
Omagh	1,318	1,177	135	0	1,042	142
Portadown	727	662	106	5	551	65
Strabane	1,307	1,234	67	5	1,162	74



Table 4.5: JSA claimants at February 2001: by Social Security Office and benefit position

Social Security Office	All Claimants (' 000 = 100%)	Type of unemployment related benefit				
		All with benefit	Contribution based only	Contribution and income based	Income based only	No benefit in payment
All	40,971	92.2%	11.8%	0.9%	79.5%	7.8%
Antrim	909	87.7%	14.4%	1.7%	71.6%	12.3%
Armagh	1,066	92.4%	10.0%	0.5%	82.0%	7.6%
Ballymena	1,069	87.9%	13.6%	1.0%	73.4%	12.1%
Ballymoney	903	91.6%	15.2%	0.0%	76.4%	8.4%
Ballynahinch	296	82.0%	15.6%	0.0%	66.5%	18.0%
Banbridge	541	89.7%	18.9%	1.9%	68.9%	10.3%
Bangor	1,403	88.9%	15.9%	1.8%	71.2%	11.1%
Belfast - Andersonstown	2,145	96.0%	6.7%	0.7%	88.6%	4.0%
Belfast - Corporation Street	2,078	94.8%	7.6%	0.5%	86.7%	5.2%
Belfast - Falls Road	1,649	98.2%	4.8%	0.0%	93.4%	1.8%
Belfast - Holywood Road	1,822	93.7%	17.0%	1.9%	74.7%	6.3%
Belfast - Knockbreda	934	94.1%	19.9%	1.0%	73.3%	5.9%
Belfast - Shaftsbury Square	1,327	96.2%	13.5%	1.1%	81.7%	3.8%
Belfast - Shankill Road	1,556	96.8%	9.0%	0.6%	87.2%	3.2%
Carrickfergus	670	91.6%	15.7%	2.0%	73.9%	8.4%
Coleraine	1,643	88.0%	13.8%	1.7%	72.5%	12.0%
Cookstown	382	95.1%	10.1%	1.4%	83.6%	4.9%
Downpatrick	786	87.4%	8.4%	1.3%	77.6%	12.6%
Dungannon	707	91.8%	15.5%	0.7%	75.7%	8.2%
Enniskillen	1,900	90.6%	7.2%	0.8%	82.6%	9.4%
Kilkeel	198	89.2%	10.8%	0.0%	78.3%	10.8%
Larne	602	93.4%	18.4%	2.1%	72.9%	6.6%
Limavady	808	91.7%	14.0%	0.6%	77.1%	8.3%
Lisburn	1,022	89.8%	20.6%	1.5%	67.7%	10.2%
Lisnagelvin	1,238	92.5%	9.4%	0.8%	82.2%	7.5%
Londonderry / Foyle	3,334	93.3%	6.8%	0.5%	86.1%	6.7%
Lurgan	1,011	90.4%	15.9%	0.4%	74.1%	9.6%
Magherafelt	751	93.7%	18.4%	1.3%	74.0%	6.3%
Newcastle	416	89.3%	9.9%	0.0%	79.4%	10.7%
Newry	1,997	95.2%	9.9%	0.5%	84.7%	4.8%
Newtownabbey	1,258	88.8%	16.2%	0.8%	71.8%	11.2%
Newtownards	1,197	84.9%	17.3%	1.4%	66.2%	15.1%
Omagh	1,318	89.3%	10.2%	0.0%	79.0%	10.7%
Portadown	727	91.1%	14.6%	0.6%	75.8%	8.9%
Strabane	1,307	94.4%	5.1%	0.4%	88.9%	5.6%

**Table 5.1: JSA claimants by Government Office Region:
February 2000 and February 2001**

<i>Thousands</i>			
GOR	February 2000	February 2001	Annual % change
United Kingdom	1,226	1,074	-12.4
North East	81	71	-12.6
North West	155	137	-12.1
Yorks & Humberside	122	108	-12.0
East Midlands	78	72	-7.9
West Midlands	116	108	-6.6
East	75	63	-16.9
London	191	160	-16.1
South East	93	75	-19.0
South West	74	61	-18.4
Wales	63	59	-6.2
Scotland	134	119	-10.9
Northern Ireland	44	41	-6.8

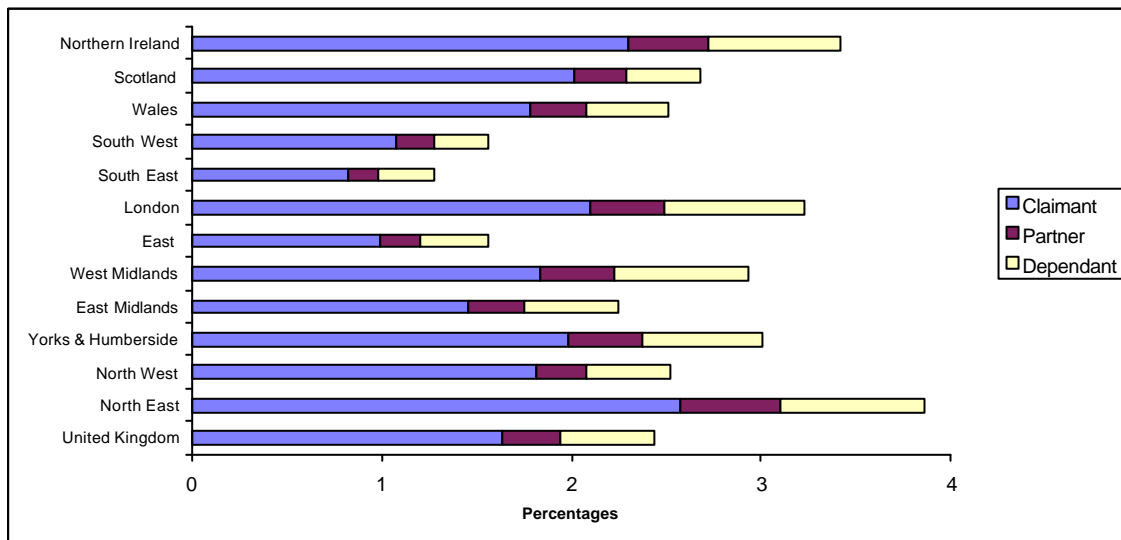


Table 5.2: Beneficiaries of income - based JSA by type and GOR: February 2001

GOR	Type of beneficiary				Beneficiaries as % of regions population aged under state retirement age ⁽¹⁾ %
	All	Claimant	Partner	Dependant	
United Kingdom	1,195	801	146	244	2.4
North East	81	54	11	16	3.9
North West	143	102	15	25	2.5
Yorks & Humberside	124	82	16	26	3.0
East Midlands	78	50	10	17	2.3
West Midlands	128	80	17	31	2.9
East	69	44	9	16	1.6
London	201	131	24	46	3.2
South East	84	54	11	19	1.3
South West	61	42	8	11	1.6
Wales	60	42	7	10	2.6
Scotland	117	87	12	17	2.7
Northern Ireland	49	33	6	10	3.4

⁽¹⁾ 65 for men and 60 for women. Based on mid-year 1999 population estimates.

Chart 5A: Beneficiaries of income - based JSA by type as a percentage of the population aged under state retirement age ⁽¹⁾ : February 2001



⁽¹⁾ 65 for men and 60 for women. Based on mid-year 1999 population estimates.

Table 6.1 Unemployed JSA claimants by gender, marital status and benefit entitlement - February 2001

Claimants	All Claimants ('000=100%)	All with benefit	Type of unemployment related benefit			
			Contribution based only %	Contribution and income based %	Income based only %	No benefit in payment %
All	40,971	92.2	11.8	0.9	79.5	7.8
All males	31,583	94.1	10.7	1.0	82.3	5.9
Single	23,966	97.1	10.3	0.2	86.6	2.9
With partner	7,617	84.8	12.1	3.8	68.9	15.2
All females	9,388	85.8	15.3	0.3	70.2	14.2
Single	7,479	94.9	9.7	0.2	85.0	5.1
With partner	1,909	50.0	37.2	0.7	12.1	50.0

Chart 6A: Unemployed JSA claimants by gender and marital status - February 2001

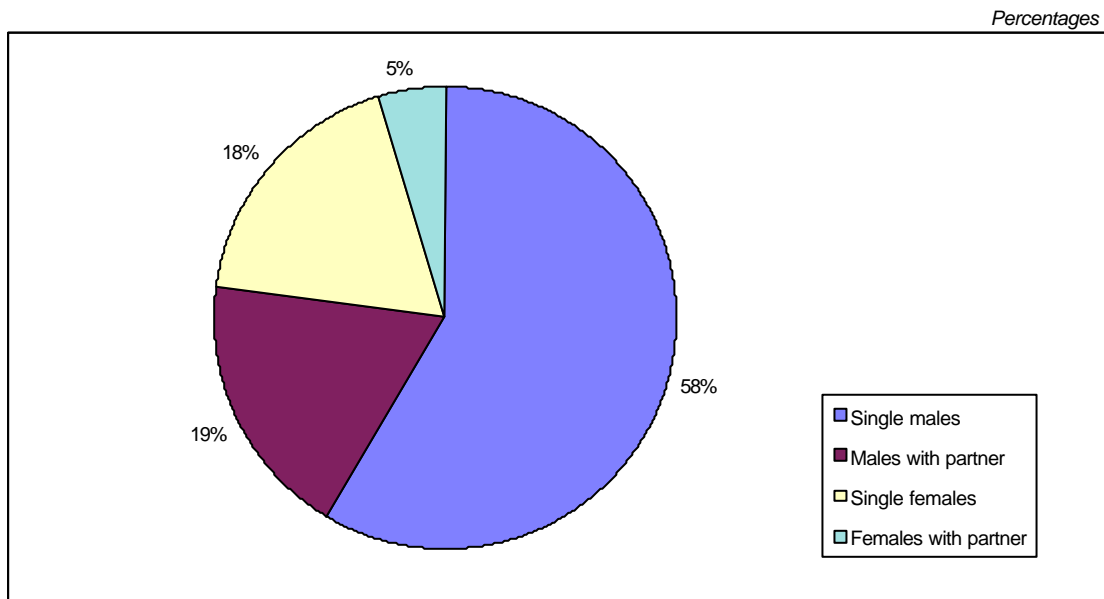


Table 6.2 Unemployed JSA claimants by age and benefit entitlement - February 2001

Claimants age	All Claimants (<i>'000=100%</i>)	All with benefit	Type of unemployment related benefit			
			Contribution based only %	Contribution and income based %	Income based only %	No benefit in payment %
All ages	40,971	92.2	11.8	0.9	79.5	7.8
Under 20	4,140	97.2	1.0	0.0	96.2	2.8
20-24	6,627	96.4	13.9	0.8	81.8	3.6
25-29	5,908	95.4	16.0	0.8	78.6	4.6
30-34	5,166	94.9	15.5	1.1	78.4	5.1
35-39	4,739	93.3	12.8	1.3	79.2	6.7
40-44	3,880	92.4	9.9	1.0	81.5	7.6
45-49	3,640	91.1	11.4	1.4	78.3	8.9
50-54	3,575	83.7	9.4	1.1	73.2	16.3
55-59	2,956	75.9	9.6	0.0	66.3	24.1
60 and over	340	76.6	27.2	4.8	44.7	23.4



**Table 6.3: Unemployed claimants by gender and age:
February 2000 and February 2001**

Claimants age	Feb-00			Feb-01		
	Total (<i>'000=100%</i>)	Men %	Women %	Total (<i>'000=100%</i>)	Men %	Women %
All ages	44,018	77.4	22.6	40,971	77.1	22.9
Under 20	4,460	63.7	36.3	4,140	62.0	38.0
20-24	7,113	73.5	26.5	6,627	73.7	26.3
25-29	6,210	79.9	20.1	5,908	77.8	22.2
30-34	5,698	81.5	18.5	5,166	84.6	15.4
35-39	4,784	85.8	14.2	4,739	83.8	16.2
40-44	4,388	81.9	18.1	3,880	81.9	18.1
45-49	3,876	77.7	22.3	3,640	76.7	23.3
50-54	3,891	75.0	25.0	3,575	76.0	24.0
55-59	3,286	74.6	25.4	2,956	73.5	26.5
60 and over	312	100.0	0.0	340	100.0	0.0

**Chart 6B: Unemployed claimants by gender and age:
February 2000 and February 2001**

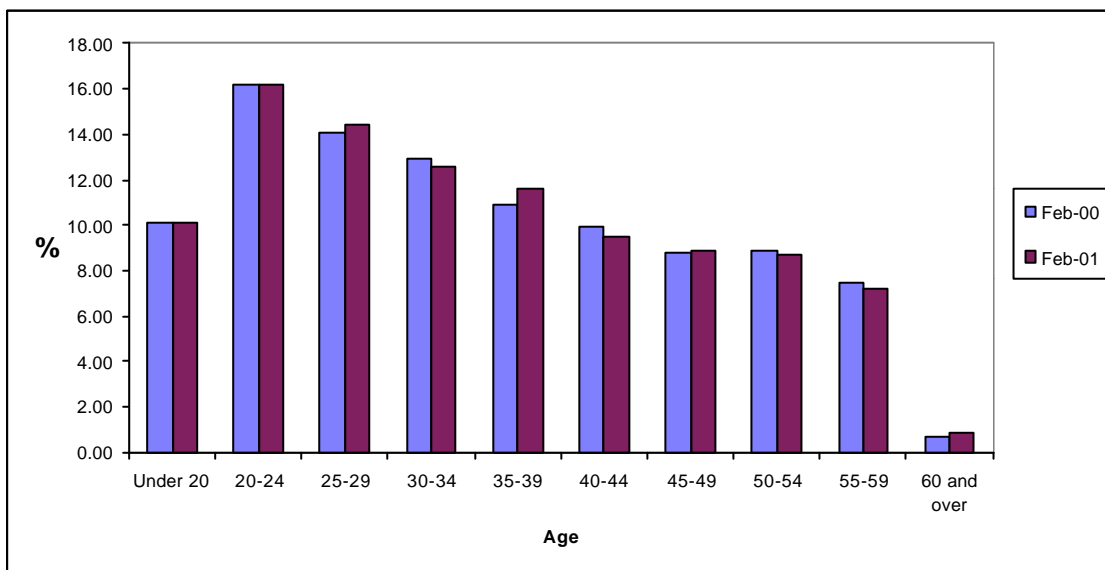


Table 7.1: Unemployed claimants with contribution-based benefit entitlement (1) by average weekly amount - 1997-2001

	All		Personal claim only		Including adult dependant (2)	
	Number	Average amount £pw	Number	Average amount £pw	Number	Average amount £pw
JSA(1)						
Feb-97	6,740	£44.77	6,673	£44.67	68	£54.78
Feb-98	6,429	£45.91	6,429	£45.91	.	.
Feb-99	6,060	£47.17	6,060	£47.17	.	.
Feb-00	5,283	£48.40	5,283	£48.40	.	.
Feb-01	5,181	£48.86	5,181	£48.86	.	.

1. Includes claimants in receipt of income-based JSA who would be entitled to the contributory element.

2. Adult dependency increase is not payable to claimants coming onto benefit after October 1996 and ceased in April 1997.

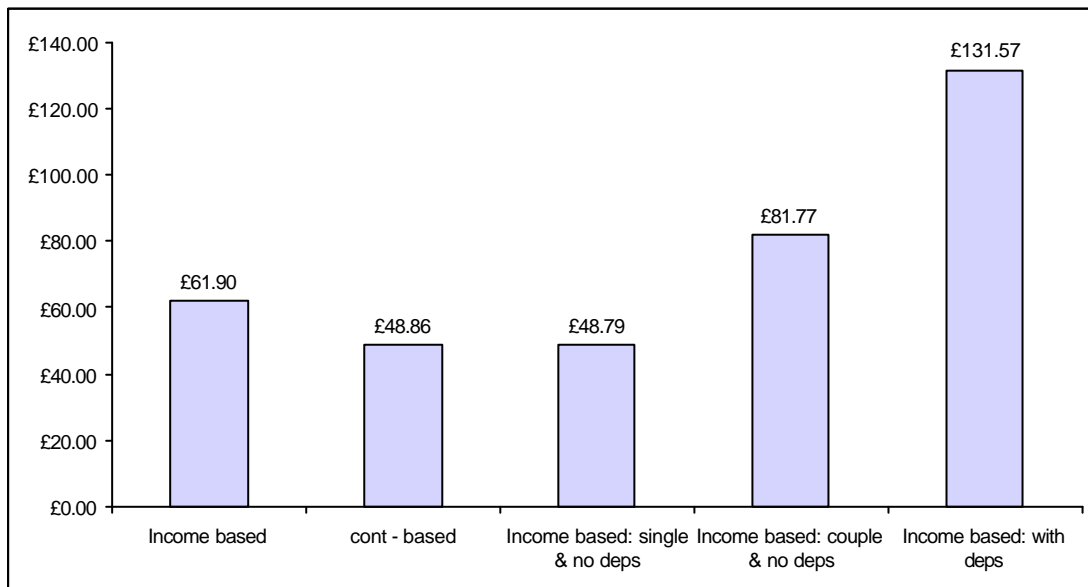


Table 7.2: Unemployed claimants with income-based benefit (1) by average weekly amount - 1997-2001

	All		Single without dependants		Couple without dependants		Single or couple with dependants	
	Number	Average amount £pw	Number	Average amount £pw	Number	Average amount £pw	Number	Average amount £pw
JSA(1)								
Feb-97	56,175	£22.07	41,191	£17.29	10,879	£7.27	4,104	£109.35
Feb-98	49,242	£60.71	36,215	£45.81	3,506	£70.32	9,521	£113.85
Feb-99	46,437	£62.26	34,570	£47.33	3,388	£73.66	8,479	£118.60
Feb-00	35,964	£60.31	28,712	£47.89	2,017	£78.82	5,236	£121.26
Feb-01	32,951	£61.90	26,695	£48.79	1,722	£81.77	4,534	£131.57

1. Includes claimants in receipt of income-based JSA who would be entitled to the contributory element. Only the amount of income-based award above the level of contributon based award is included.

Chart 7A: Average weekly amount of JSA in payment by benefit and family type - February 2001



ANNEX 1: TECHNICAL DETAILS

A 20% sample of all claimants of JSA is conducted on the second Thursday in February, May, August and November of each year. The sample data are used to make estimates of the total number of JSA claimants in Northern Ireland.

The JSA QSE covers all unemployed people who claim JSA, including credits only cases. The JSA QSE also collects data on participants of government training schemes. However, analysis of this group is not yet possible.

The data is extracted from the JSA payment system (JSAPS). Claimants are selected for the sample based on National Insurance endings. The same endings are used each quarter to ensure continuity. The data is physically extracted from JSAPS 21 days after the enquiry date. This allows for claims, which had not been put on the system at the enquiry date, or claims, which had ended before the enquiry date and should have been excluded.

The Department of Enterprise Trade and Investment (DETI) unemployment count is used to gross up the sample. The JSA QSE is taken from the same source as the DETI unemployed claimant count. The DETI count also includes clerically processed claims, which means these are also reflected in the results. Temporarily stopped cases are now omitted for post-JSA cases, as these on average number less than fifty. Both the JSA QSE and the DETI count allow 21 days after the enquiry date for late claims and early terminations.

Automated validation checks have been carried out on data from May 1998 only. The JSA QSE is designed to cover all people who claim JSA, including those on government training schemes, however the training scheme cases are not included in this analysis. The data are not seasonally adjusted. DETI produce a headline count of claimant unemployment each month. DETI exclude claimants on government training schemes in their count. Data from each can be used to complement one another to provide consistent estimates of the number of unemployed JSA claimants.



ANNEX 2: BACKGROUND TO JSA

Jobseeker's Allowance (JSA) replaced Unemployment Benefit and Income Support for unemployed people on 7 October 1996. JSA is for people who are unemployed or working less than 16 hours a week, are available for work for at least 40 hours a week, actively looking for work, and people on a Government training scheme. They must not be in relevant education and be under pensionable age (i.e. 60 years for females and 65 for males). Young people aged 16-17 are generally excluded from claiming, however there are exceptions such as suffering severe hardship.

There are two routes of entry into JSA, contribution-based JSA and income-based JSA. Contribution-based is payable for up to 6 months to those people who have paid sufficient national insurances and is taxable. Income-based JSA is means-tested and taxable. It is usually paid when someone does not qualify for contribution-based or as a top up to contribution-based JSA. Claimants can not claim both income-based and contribution-based JSA, however in this publication we have classified claimants who receive income-based JSA but who have underlying rights to contribution-based JSA into a group on their own.

Credits are awarded for each week of claiming JSA. Credits can be awarded even though the person is not being paid JSA. This is the case when either they have not paid enough contributions, they already have received their full entitlement of contribution-based JSA, they are not entitled to income-based JSA or they choose not to claim JSA.

Benefit may be disallowed if the claimant does not fulfil the basic 'labour market' conditions. In some cases even if you do satisfy the basic conditions your benefit may be 'sanctioned' and payment stopped for a limited period. In this instance you may be eligible for a hardship payment which is a reduced rate income-based JSA payment.



ANNEX 3: SAMPLING ERRORS

The estimates in the tables in this report are based on a 20% sample and are therefore subject to 'sampling error', i.e. the number of cases in the sample may produce rated up population estimates which are lower or higher than the true population value.

An indication of the effect of these sampling errors can be gained from the tables of 'confidence intervals' shown below. The figures shown in this report are a best estimate based on the sample data. The true number will lie somewhere in a range around this estimate. The size of this range is based on a "95% confidence interval" i.e. there is a 1 in 20 chance that the true value lies outside this range. Thus, for example, an estimate of 1,000 is really showing that the true value could lie anywhere in the range of 876 to 1,124. This applies only to estimates of numbers of cases and not to other features, e.g. amounts of benefit.

The figures in the table below give the 95% confidence intervals for the true value in the population, based on the estimated value from the 5% sample.

Estimated Value	95% Confidence Interval (+/-)	Confidence interval as a % of the estimate (+/-)
<i>150</i>	<i>48</i>	<i>32</i>
<i>300</i>	<i>68</i>	<i>23</i>
<i>400</i>	<i>78</i>	<i>20</i>
<i>500</i>	<i>88</i>	<i>18</i>
<i>600</i>	<i>96</i>	<i>16</i>
<i>700</i>	<i>104</i>	<i>15</i>
<i>800</i>	<i>111</i>	<i>14</i>
<i>900</i>	<i>118</i>	<i>13</i>
<i>1000</i>	<i>124</i>	<i>12</i>
<i>2000</i>	<i>175</i>	<i>9</i>
<i>3000</i>	<i>215</i>	<i>7</i>
<i>4000</i>	<i>248</i>	<i>6</i>
<i>5000</i>	<i>277</i>	<i>6</i>
<i>6000</i>	<i>304</i>	<i>5</i>
<i>7000</i>	<i>328</i>	<i>5</i>
<i>8000</i>	<i>351</i>	<i>4</i>
<i>9000</i>	<i>372</i>	<i>4</i>
<i>10000</i>	<i>392</i>	<i>4</i>
<i>20000</i>	<i>554</i>	<i>3</i>
<i>30000</i>	<i>679</i>	<i>2</i>
<i>40000</i>	<i>784</i>	<i>2</i>
<i>50000</i>	<i>877</i>	<i>2</i>

Warning: Figures in italics should be used with caution



List of Tables

Section 1: Caseload by benefit entitlement

Table 1.1 Unemployed Claimants by benefit entitlement - 1996 to 2001

Table 1.2 Unemployed Claimants by benefit entitlement - 1996 to 2001

Section 2: Duration of claim

Table 2.1 Unemployed Claimants by duration of claim - February 1998 to February 2001

Table 2.2 Unemployed Claimants by benefit entitlement and duration of current claim – February 2001

Table 2.3 Unemployed Claimants by gender, age and duration of current claim - February 2001

Section 3: Claims without contribution and income-based benefit

Table 3.1 Unemployed Claimants : receipt/non-receipt of contribution-based benefit by gender - February 2000 and February 2001

Table 3.2 Unemployed Claimants not in receipt of contribution-based benefit by gender and benefit reason - February 2000 and February 2001

Table 3.3 Unemployed Claimants : receipt/non-receipt of unemployment-related benefit by gender - February 2000 and February 2001

Table 3.4 Unemployed Claimants not in receipt of unemployment-related benefit by gender and benefit reason - February 2000 and February 2001



Section 4: District Council and Social Security Office analysis

- Table 4.1 JSA Claimants at February 2001: by District Council and benefit position
- Table 4.2 JSA Claimants at February 2001: by District Council and benefit position
- Table 4.3 JSA Claimants at February 2001: by District Council and as a percentage of the working age population
- Table 4.4 JSA Claimants at February 2001: by Social Security Office and benefit position
- Table 4.5 JSA Claimants at February 2001: by Social Security Office and benefit position

Section 5: United Kingdom Regional analysis

- Table 5.1 JSA Claimants by Government Office Region: February 2000 and February 2001
- Table 5.2 Beneficiaries of income-based JSA by type and Government Office Region: February 2001

Section 6: Gender, age and marital status

- Table 6.1 Unemployed JSA Claimants by gender, marital status and benefit entitlement - February 2001
- Table 6.2 Unemployed JSA Claimants by age and benefit entitlement - February 2001
- Table 6.3 Unemployed Claimants by gender and age - February 2000 and February 2001

Section 7: Amounts of Benefit

- Table 7.1 Unemployed Claimants with contribution-based benefit entitlement by average weekly amount – 1997 - 2001
- Table 7.2 Unemployed Claimants with income-based benefit by average weekly amount – 1997 - 2001



ISSN 1475-5769