

**Department for Social Development**

**Jobseeker's  
Allowance  
Summary Statistics**

**DSD**

Department for  
Social Development

**February 2003**



**A National Statistics Publication**

## **Published BY**

Statistics & Research Branch  
Department for Social Development  
Room 3 Block 4,  
The Village, Stormont,  
Belfast, BT4 3SJ

Telephone: 02890 5/22803  
GTN (440) 22803  
Fax: 02890 5/22763  
e-mail: [srb@dsdni.gov.uk](mailto:srb@dsdni.gov.uk)

ISSN 1475-5769

Further Statistics for Northern Ireland relating to Social Security Benefits can be obtained by visiting our website;

<http://www.dsdni.gov.uk/statistics-research/introduction.asp>

Statistics relating to Social Security Benefits in Great Britain can be obtained by visiting the following website;

<http://www.dwp.gov.uk/asd/index.htm>

## Contents

	Page
Introduction .....	3
Glossary of terms and conventions .....	4
Main Findings .....	6
Section 1: Caseload by Benefit entitlement .....	9
Section 2: Duration of Claim .....	11
Section 3: Claimants without contribution and income-based benefit ....	13
Section 4: District Council and Social Security Office Analysis.....	16
Section 5: United Kingdom Regional Analysis .....	21
Section 6: Gender, age and marital status .....	23
Section 7: Amounts of benefit .....	26
Annex 1: Technical details.....	28
Annex 2: Background to JSA.....	29
Annex 3: Sampling Errors.....	30
List of Tables .....	31

## Introduction

This publication presents data from the Jobseeker's Allowance (JSA) Quarterly Statistical Enquiry (QSE), and also historical data on unemployed claimants of Unemployment Benefit and Income Support. Data is based on a 20% sample of all JSA claimants which is conducted on the second Thursday of February, May, August and November. The publication provides numbers of unemployed claimants for each quarter from February 1997 through to February 2003. There is a more in-depth analysis for February 2003 and comparisons with the previous year.

Jobseeker's Allowance (JSA) replaced Unemployment Benefit and Income Support for unemployed people on 7 October 1996. JSA can be claimed by people who are available for and actively seeking employment, including those in work for less than 16 hours a week on average, and by people on a Government training scheme. They must not be in relevant education and must be under pensionable age (i.e. 60 years for females and 65 for males). Young people aged 16-17 are generally excluded from claiming, however there are exceptions such as suffering severe hardship (See Annexe 2 for more details).

Jobseeker's Allowance data is extracted from the JSA payment system (JSAPS). Unemployment Benefit data is extracted from the National Unemployment Benefits System (NUBS). Claimants are selected for the 20% sample based on National Insurance number endings. The Department of Enterprise Trade and Investment (DETI) unemployment count is used to gross up the sample (See Technical Details in Annexe 1).

Further advice on analysis can be obtained from the contact point on page 1.

## Glossary of Terms and Conventions

### Glossary of Terms

#### Benefit entitlement

##### Contribution-based:-

Benefit based on National Insurance contributions paid at a personal rate for up to 6 months.

##### Income-based:-

Benefit based on claimants and dependants needs payable for as long as qualifying conditions are met.

##### Contribution and income-based:-

A claimant can receive either contribution or income-based benefit, but not both. However for the purposes of this publication, claimants who satisfy the conditions for contribution-based JSA, but receive income-based JSA are shown separately.

#### Child

A dependant aged under 16. (Also dependants aged 16-18 for whom Child Benefit is in receipt).

#### Couple

Two persons either married or living together as husband and wife.

#### Dependant

A person who is not a *Partner* and whose resources and requirements are included with those of the claimant.

#### Disallowances

Refusals of claims to benefit because of failure to satisfy the qualifying conditions.

#### Duration of claim

The length of time a claimant has been unemployed in the current claim.

## Income Support (IS)

Income Support is an income-related benefit which provides financial help for people who are not required to be available for work, are not in remunerative work and whose income from all sources is below a minimum level set by parliament. JSA replaced Income Support for the unemployed in October 1996.

## Marital status

Whether the claimant is without a partner (single) or with a partner (couple) - see Partner.

## Partner

One of a married or unmarried couple, living together.

## Sanctions

The non-payment of JSA for a specified period because the jobseeker has unreasonably caused or perpetuated their own unemployment.

## Single

A claimant who is not living as one of a couple.

## Unemployment related benefits

Benefits paid due to unemployment. From October 1996 they are Jobseeker's Allowance, including JSA (Cont), JSA (IB) or Hardship payments. Prior to October 1996 they were Unemployment Benefit and/or Income Support.

## Conventions

JSA	Jobseeker's Allowance
JSA (Cont)	Contribution-based JSA
JSA (IB)	Income-based JSA
IS	Income Support
GOR	Government Office Region
-	Nil or Negligible
.	Not applicable
n/a	Not available
<i>Italics</i>	<i>Counts in italics are not statistically reliable</i>



## **Main findings**

This section summarises the key findings of the February 2003 JSA Summary Statistics.

### **Section 1 - Caseload and benefit entitlement**

The overall number of unemployed claimants fell by over three thousand (3,084) between February 2002 and February 2003 to 35,176. The majority of this reduction in numbers was accounted for by recipients of income-based benefit - a fall of 2,830 in the year to February 2003.

The proportion of the overall caseload in receipt of only contribution-based JSA increased to 14.4% in February 2003, from 12.7% in the previous year. This figure is lower than that of Great Britain, which has a proportion of the overall caseload in receipt of only contribution-based benefit of 19.2%.

### **Section 2 - Duration of claim**

There was a slightly higher proportion of claims of short duration (less than 3 months) in February 2003, 35.9% compared to 33.4% a year earlier. Claims of less than 3 months are a proxy for new claims.

There was also a decrease in the proportion of claims of more than a year in February 2003 (27.1%) than in February 2002 (29.8%). Great Britain saw a similar trend, with claims of long duration (more than one year) falling to 16.9% of the overall caseload, from 17.9% in the previous year.

Between February 2000 and February 2003 the proportion of JSA claimants who had been out of work for one year or more decreased from 35% to 27% of all JSA claimants. Some of this decrease will be due to changing economic circumstances. But, it will also be impacted upon by the introduction of the New Deal for 18 to 24 year olds and the New Deal for 25+ both of which are designed to assist the longer-term unemployed into work or training.

When compared with the corresponding figures for Great Britain, Northern Ireland is shown to have a greater proportion of claims of long duration (more than one year), namely 27.1% of the overall caseload in February 2003, compared to the Great Britain figure of 16.9%.

Almost two thirds (63.5%) of female and over half (54.5%) of male unemployed claimants had a current claim duration of less than 6 months in February 2003, with a far greater percentage of males having a claim duration of over 1 year.

### **Section 3 - Claimants without contribution and/or income-based benefit**

The proportion of claimants not receiving contribution-based benefit has decreased slightly to 84.6% in February 2003 from 86.0% in the previous year. The main reasons for claimants not receiving contribution-based benefit in February 2003 are contribution deficiency (58.5% of all claimants) and entitlement exhausted (14.9% of all claimants).

This was also the case in Great Britain with figures of 56.8% for contribution deficiency and 13.5% for entitlement exhausted.

The number of JSA claimants who are not entitled to unemployment related benefit fell to 8.6% in February 2003 from 8.7% in the previous year. The corresponding figures for Great Britain between February 2002 and February 2003 rose to 9.8% of the overall caseload, from 9.5% in the previous year. The main reason for non-entitlement once again was contribution deficiency and entitlement exhausted.

### **Section 4 – District Council and Social Security Office analysis**

The proportion of JSA claimants with benefit varied between 85.5% in Omagh to 94.8% in Belfast.

Unemployed claimants in Fermanagh were least likely to be in receipt of only JSA Contribution-based benefit in February 2003 (8.1% compared to 14.4% for Northern Ireland as a whole and 28.2% in Castlereagh).

The proportion of JSA claimants in receipt of only JSA Income-based benefit in February 2003 varied between 57.4% in Castlereagh and 84.0% in Moyle.

JSA claimants as a proportion of people of working age in Northern Ireland in February 2003 was 3.4%. These proportions range from 1.8% in Banbridge and Magherafelt to 5.5% in Derry.

Foyle Social Security Office (Londonderry) had the largest share of the JSA caseload with 2,730 claimants (7.8% of the total caseload) at February 2003. Kilkeel Social Security Office had only 191 claimants (0.5% of the total caseload).

Newtownabbey Social Security Office had the highest proportion of contribution based only claimants (25.1%) while Falls Road Social Security Office had the lowest (7.0%).



## Section 5 – United Kingdom Regional analysis

JSA claimants in the United Kingdom have decreased by 1.1% in the year to February 2003. There has been an increase in four Government Office Regions, with South East having the largest increase at 6.7%. The other regions have seen a decrease ranging from 2.2% in Scotland to 8.8% in the North East.

JSA Income-based Beneficiaries as a proportion of the population under state retirement age in the United Kingdom in February 2003 was 2.1%. This is lower than the corresponding figure for Northern Ireland (2.6%). These proportions for the Government Office Regions range from 1.2% in the South East to 3.2% in London.

## Section 6 - Gender, age and marital status

Men are more likely to claim JSA (77.8% of claimants in February 2003). This is partly because income-based benefit is claimed on behalf of couples by only one partner, normally the man. The corresponding figure for men in Great Britain in February 2003 was 75.3% of claimants.

Female unemployed claimants are more likely than males to be in receipt of only JSA contribution-based benefit in February 2003 (17.6% compared with 13.5%) but less likely to receive JSA income-based (67.8% compared to 78.4%).

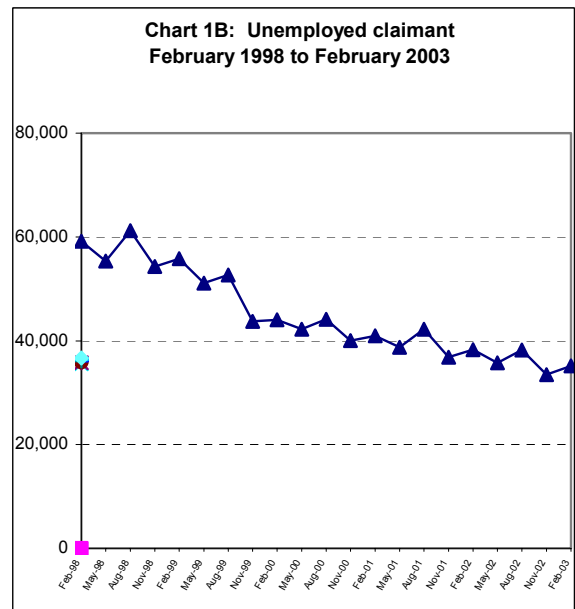
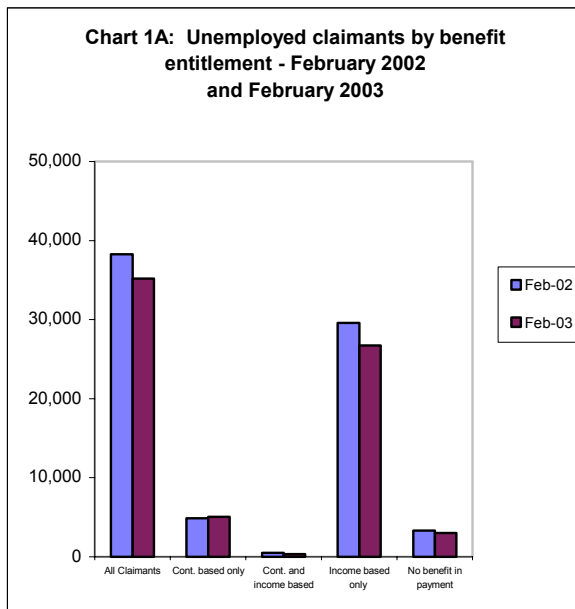
The age distribution of unemployed claimants has changed very little over the year to February 2003. Over a quarter (30.8%) of all claimants are aged under 25, over half (51.0%) are aged 25-49 and just over a fifth (18.2%) are aged 50 or over. The figures for Great Britain with regards to age groups in February 2003 were similar.

## Section 7 - Amounts of benefit

Single claimants without dependants tend to receive the lowest amounts of benefit, on average £50.50 per week for contribution-based and £50.24 for those with income-based. Recipients of income-based JSA with partners and/or dependants receive higher amounts (£87.17 for couples without dependants and £141.19 for single/couples with dependants). However the former account for only 4.2% of all JSA claimants, whilst the latter account for 8.7%. The corresponding figures for Great Britain in February 2003, with regards to JSA with partners and dependants, are similar.

**Table 1.1: Unemployed Claimants by benefit entitlement - 1997 to 2003**

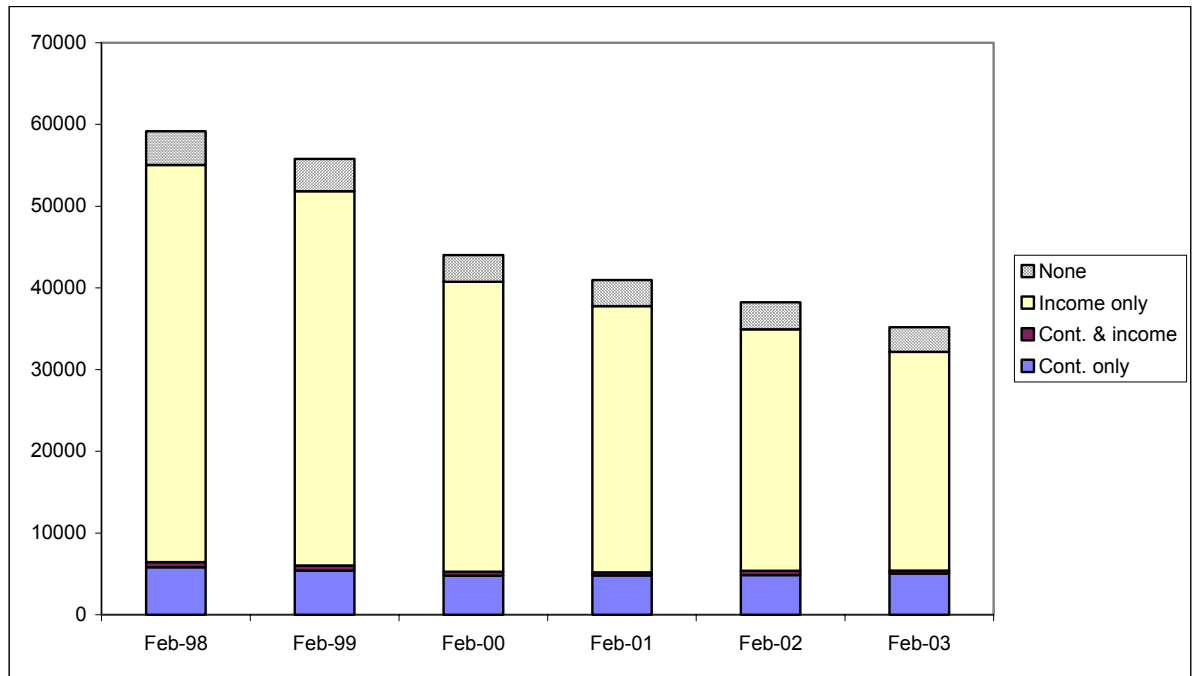
	<u>Type of unemployment related benefit</u>					
	All Claimants	All with benefit	Contribution based only	Contribution and income based	Income based only	No benefit in payment
<b>Jobseeker's Allowance</b>						
Feb-97	67,541	62,089	5,914	826	55,349	5,452
May-97	61,309	56,765	3,646	772	52,346	4,544
Aug-97	65,727	60,889	6,570	649	53,669	4,838
Nov-97	58,305	54,242	5,054	586	48,602	4,063
Feb-98	59,161	55,049	5,807	622	48,620	4,112
May-98	55,323	51,552	4,720	586	46,246	3,771
Aug-98	61,175	56,914	6,716	679	49,519	4,261
Nov-98	54,327	50,443	5,076	525	44,842	3,884
Feb-99	55,796	51,834	5,397	663	45,774	3,962
May-99	51,137	47,561	4,423	642	42,496	3,577
Aug-99	52,652	48,339	5,383	538	42,417	4,313
Nov-99	43,720	40,383	4,035	410	35,939	3,337
Feb-00	44,018	40,756	4,792	491	35,473	3,262
May-00	42,255	38,900	4,466	489	33,945	3,355
Aug-00	44,123	40,667	5,351	444	34,872	3,456
Nov-00	40,007	36,527	4,536	429	31,562	3,480
Feb-01	40,971	37,772	4,822	359	32,592	3,199
May-01	38,766	35,632	4,313	359	30,961	3,133
Aug-01	42,234	38,901	5,660	391	32,850	3,333
Nov-01	36,854	33,764	4,616	369	28,780	3,090
Feb-02	38,260	34,933	4,868	493	29,571	3,327
May-02	35,747	32,709	4,503	456	27,750	3,038
Aug-02	38,257	34,987	5,332	456	29,199	3,270
Nov-02	33,488	30,488	4,221	376	25,891	3,000
Feb-03	35,176	32,158	5,063	354	26,741	3,018



**Table 1.2: Unemployed Claimants by benefit entitlement - 1997 to 2003**

	All Claimants ( <sup>'000=100%</sup> )	All with benefit %	Type of unemployment related benefit			
			Contribution based only %	Contribution and income based %	Income based only %	No benefit in payment %
<b>Jobseeker's Allowance</b>						
Feb-98	59,161	93.0	9.8	1.1	82.2	7.0
Feb-99	55,796	92.9	9.7	1.2	82.0	7.1
Feb-00	44,018	92.6	10.9	1.1	80.6	7.4
Feb-01	40,971	92.2	11.8	0.9	79.5	7.8
Feb-02	38,260	91.3	12.7	1.3	77.3	8.7
Feb-03	35,176	91.4	14.4	1.0	76.0	8.6

**Chart 1C: Unemployed Claimants by benefit entitlement - 1997 to 2002**



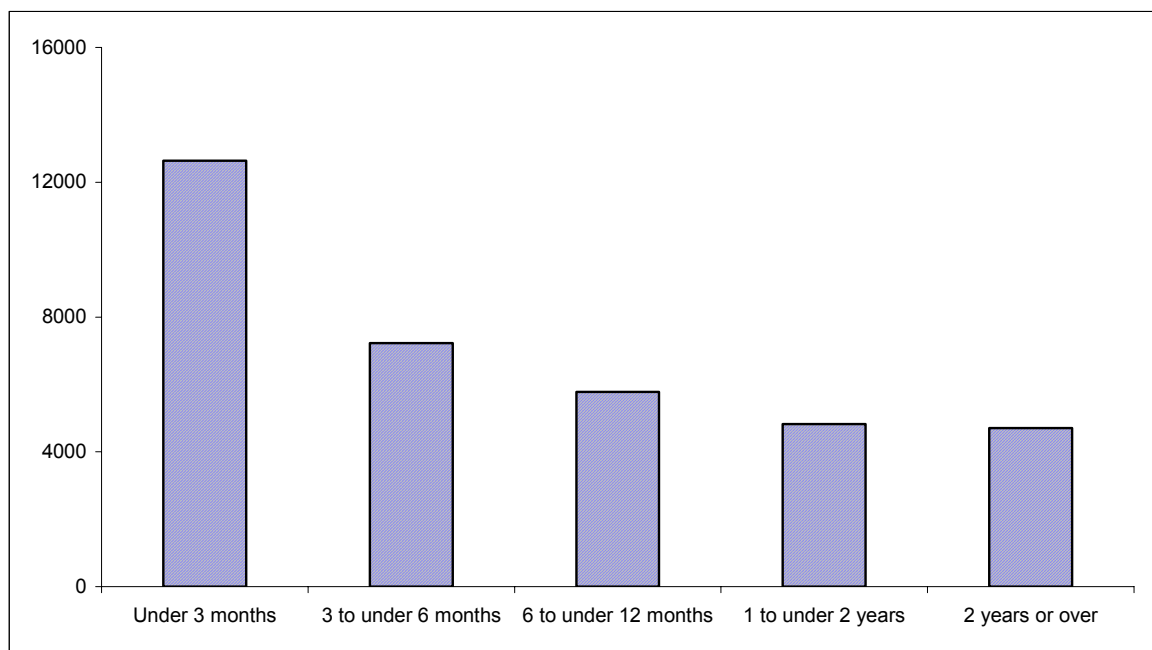
**Table 2.1: Unemployed Claimants by duration of claim - February 2000 to February 2003**

Duration	Feb-00	Feb-01	Feb-02	Feb-03
<b>All claimants ('000= 100%)</b>	<b>44,018</b>	<b>40,971</b>	<b>38,260</b>	<b>35,176</b>
Under 3 months	13,307	12,574	12,797	12,645
3 to under 6 months	7,964	7,907	7,651	7,223
6 to under 12 months	7,303	7,408	6,393	5,779
1 to under 2 years	6,503	6,200	5,821	4,824
2 years or over	8,941	6,881	5,598	4,706

Duration	Feb-00	Feb-01	Feb-02	Feb-03
<b>All claimants ('000= 100%)</b>	<b>100%</b>	<b>100%</b>	<b>100%</b>	<b>100%</b>
Under 3 months	30.2	30.7	33.4	35.9
3 to under 6 months	18.1	19.3	20.0	20.5
6 to under 12 months	16.6	18.1	16.7	16.4
1 to under 2 years	14.8	15.1	15.2	13.7
2 years or over	20.3	16.8	14.6	13.4

**Chart 2A: Unemployed Claimants by duration of current claim - February 2003**



**Table 2.2: Unemployed Claimants by benefit entitlement and duration of current claim - February 2003**

	All Claimants	All with benefit	Type of unemployment related benefit			
			Contribution based only	Contribution and income based	Income based only	No benefit in payment
<b>Duration</b>						
<b>All ('000=100%)</b>	<b>35,176</b>	<b>32,158</b>	<b>5,063</b>	<b>354</b>	<b>26,741</b>	<b>3,018</b>
% up to 2 weeks	6.5	5.4	11.3	18.2	4.1	18.6
% 2 to under 6 weeks	15.2	15.3	29.4	21.7	12.6	13.2
% 6 to under 13 weeks	14.3	14.4	25.5	18.9	12.3	12.3
% 13 to under 26 weeks	20.5	20.9	33.8	41.3	18.2	16.3
% 26 to under 39 weeks	10.2	10.1	0.0	0.0	12.1	11.3
% 39 weeks to under 1 year	6.2	6.2	0.0	0.0	7.5	6.3
% 1 to under 2 years	13.7	13.8	0.0	0.0	16.5	13.2
% 2 years or over	13.4	13.8	0.0	0.0	16.6	8.7

**Table 2.3 Unemployed Claimants by gender, age and duration of current claim - February 2003**

Age	All Claimants ('000=100%)	Duration of current claim			
		Under 6 months %	6 months to under 1 year %	1 to under 2 years %	2 years or more %
<b>All persons</b>	<b>35,176</b>	<b>56.5</b>	<b>16.4</b>	<b>13.7</b>	<b>13.4</b>
Under 25	10,823	78.9	15.6	4.0	1.5
25 to 49	17,941	51.5	18.2	18.5	11.8
50 or over	6,411	32.6	12.8	16.7	37.9
<b>Males</b>	<b>27,372</b>	<b>54.5</b>	<b>16.7</b>	<b>14.2</b>	<b>14.6</b>
Under 25	7,758	79.3	15.7	3.7	1.3
25 to 49	14,697	49.2	18.6	19.5	12.7
50 or over	4,917	31.1	12.6	15.1	41.2
<b>Females</b>	<b>7,804</b>	<b>63.5</b>	<b>15.4</b>	<b>11.9</b>	<b>9.1</b>
Under 25	3,066	77.7	15.4	4.8	2.1
25 to 49	3,244	62.1	16.4	14.1	7.4
50 or over	1,495	37.5	13.4	21.9	27.2

**Table 3.1 Unemployed claimants : receipt / non-receipt of contribution-based benefit by gender - February 2002 and February 2003**

	Feb-02		Feb-03		% All males	% All females
	Total	% All claimants	Total	% All claimants		
<b>All claimants</b>	<b>38,260</b>	100.0	<b>35,176</b>	100.0	100.0	100.0
Claimants in receipt of contribution-based benefit(1)	<b>5,362</b>	14.0	<b>5,417</b>	15.4	14.7	17.7
Claimants not in receipt of contribution-based benefit	<b>32,898</b>	86.0	<b>29,759</b>	84.6	85.3	82.3

1. Includes claimants in receipt of income-based JSA, but who would also be entitled via the contributory route.

**Table 3.2: Unemployed claimants not in receipt of contribution-based benefit by gender and benefit reason - February 2002 and February 2003**

Reason for non-entitlement	Feb-02		Feb-03		% All males	% All females
	Total	% All claimants	Total	% All claimants		
<b>All without JSA(C)</b>	<b>32,898</b>	86.0	<b>29,759</b>	84.6	85.3	82.3
(% by claimants):						
Waiting days	<b>377</b>	1.0	<b>317</b>	0.9	0.9	0.8
Entitlement exhausted	<b>5,398</b>	14.1	<b>5,231</b>	14.9	16.1	10.4
Entitlement not yet determined	<b>6,157</b>	16.1	<b>2,911</b>	8.3	8.1	8.8
Contribution deficiency	<b>20,031</b>	52.4	<b>20,562</b>	58.5	58.1	59.6
Benefit disallowed or sanctioned(1)	<b>583</b>	1.5	<b>402</b>	1.1	1.0	1.6
Other	<b>41</b>	0.1	<b>33</b>	0.1	0.1	0.1

1. Includes claimants who lose entitlement because they have earnings or income above prescribed levels

**Table 3.3: Unemployed claimants: receipt / non-receipt of unemployment-related benefit by gender - February 2002 and February 2003**

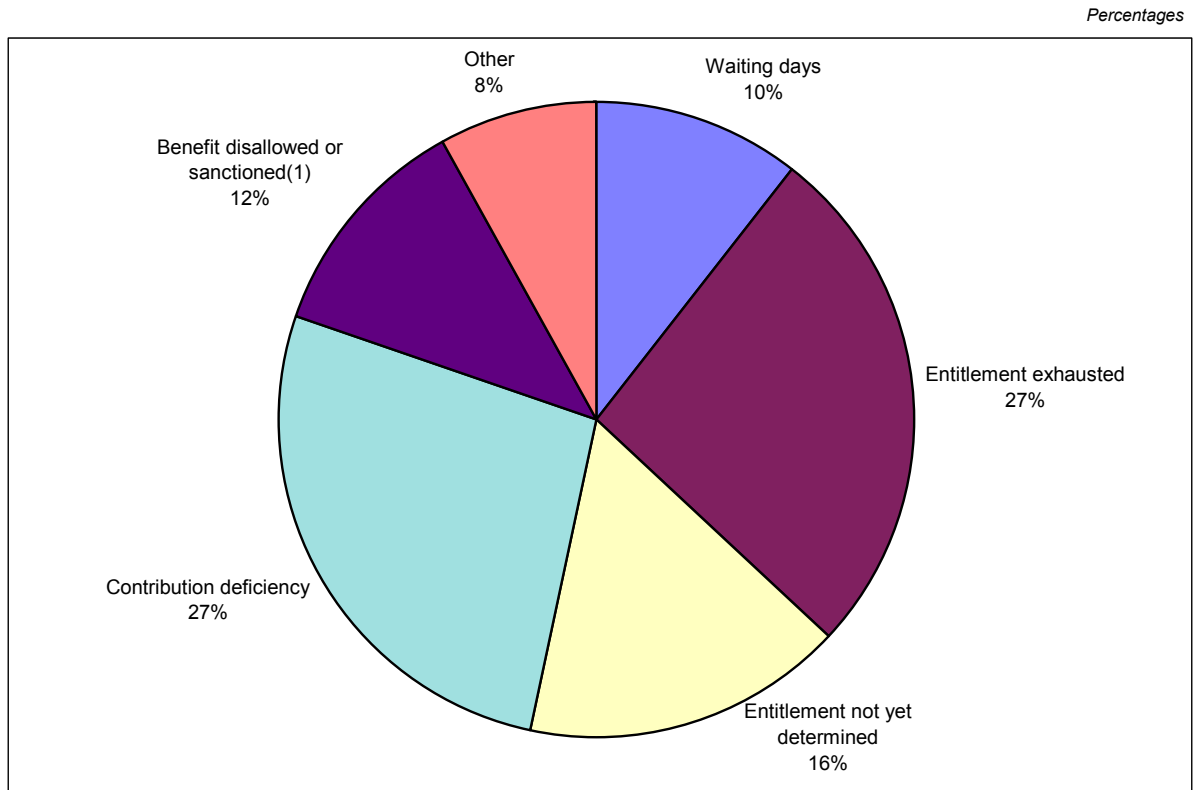
	Feb-02		Feb-03		% All males	% All females
	Total	% All claimants	Total	% All claimants		
<b>All claimants</b>	<b>38,260</b>	100.0	<b>35,176</b>	100.0	100.0	100.0
Claimants in receipt of unemployment-related benefit	<b>34,933</b>	91.3	<b>32,158</b>	91.4	93.1	85.6
Claimants not in receipt of unemployment-related benefit	<b>3,327</b>	8.7	<b>3,018</b>	8.6	6.9	14.4

**Table 3.4: Unemployed claimants not in receipt of unemployment-related benefit by gender and benefit reason - February 2002 and February 2003**

Reason for non-entitlement	Feb-02		Feb-03			
	Total	% All claimants	Total	% All claimants	% All males	% All females
<b>All without JSA</b>	<b>3,327</b>	8.7	<b>3,018</b>	8.6	6.9	14.4
(% by claimants):						
Waiting days	377	1.0	317	0.9	0.9	0.8
Entitlement exhausted	784	2.1	802	2.3	1.7	4.1
Entitlement not yet determined	602	1.6	495	1.4	1.2	2.3
Contribution deficiency	794	2.1	808	2.3	1.6	4.7
Benefit disallowed or sanctioned(1)	506	1.3	353	1.0	0.9	1.5
Other	264	0.7	244	0.7	0.6	0.3

1. Includes claimants who lose entitlement because they have earnings or income above prescribed levels

**Chart 3A: Unemployed JSA claimants not in receipt of any unemployment-related benefit by reason for non-payment - February 2003**



**Table 4.1: JSA claimants at February 2003: by District Council and benefit position**

District Council	Type of unemployment related benefit					
	All Claimants ( ' 000 = 100%)	All with benefit	Contribution based only	Contribution and income based	Income based only	No benefit in payment
<b>All</b>	<b>35,176</b>	<b>32,158</b>	<b>5,063</b>	<b>354</b>	<b>26,741</b>	<b>3,018</b>
Antrim	732	654	132	6	517	78
Ards	1,152	1,000	207	11	782	152
Armagh	968	829	81	9	738	139
Ballymena	889	808	163	5	640	81
Ballymoney	354	320	82	4	234	34
Banbridge	462	428	106	0	322	34
Belfast	8,319	7,889	1,023	100	6,766	430
Carrickfergus	745	665	147	0	518	80
Castlereagh	774	680	218	17	445	94
Coleraine	1,293	1,191	204	5	982	102
Cookstown	408	350	38	0	311	58
Craigavon	1,360	1,227	266	9	952	133
Derry	3,566	3,327	376	25	2,925	239
Down	1,224	1,097	174	24	899	127
Dungannon	592	559	76	9	475	33
Fermanagh	1,633	1,465	132	20	1,313	168
Larne	651	592	134	0	458	59
Limavady	729	661	134	21	506	68
Lisburn	1,652	1,508	293	27	1,189	144
Magherafelt	425	400	74	6	321	25
Moyle	383	354	33	0	322	29
Newry & Mourne	1,993	1,850	247	5	1,598	143
Newtownabbey	1,422	1,284	308	10	965	138
North Down	1,145	980	182	17	780	165
Omagh	1,090	932	124	10	799	158
Strabane	1,215	1,109	108	14	987	106

Note: The allocation of allowances to District Council is based on the postcode of the recipient. There is evidence that this process is not equally accurate for all District Councils.

**Table 4.2: JSA claimants at February 2003: by District Council and benefit position**

District Council	All Claimants ( ' 000 = 100%)	Type of unemployment related benefit				
		All with benefit	Contribution based only	Contribution and income based	Income based only	No benefit in payment
<b>All</b>	<b>35,176</b>	<b>91.4%</b>	<b>14.4%</b>	<b>1.0%</b>	<b>76.0%</b>	<b>8.6%</b>
Antrim	732	89.4%	18.0%	0.8%	70.6%	10.6%
Ards	1,152	86.8%	18.0%	1.0%	67.9%	13.2%
Armagh	968	85.6%	8.4%	0.9%	76.3%	14.4%
Ballymena	889	90.9%	18.4%	0.6%	72.0%	9.1%
Ballymoney	354	90.3%	23.0%	1.2%	66.0%	9.7%
Banbridge	462	92.6%	23.0%	0.0%	69.6%	7.4%
Belfast	8,319	94.8%	12.3%	1.2%	81.3%	5.2%
Carrickfergus	745	89.2%	19.7%	0.0%	69.5%	10.8%
Castlereagh	774	87.9%	28.2%	2.2%	57.4%	12.1%
Coleraine	1,293	92.1%	15.8%	0.4%	75.9%	7.9%
Cookstown	408	85.7%	9.4%	0.0%	76.3%	14.3%
Craigavon	1,360	90.2%	19.5%	0.7%	70.0%	9.8%
Derry	3,566	93.3%	10.6%	0.7%	82.0%	6.7%
Down	1,224	89.6%	14.2%	1.9%	73.4%	10.4%
Dungannon	592	94.5%	12.8%	1.5%	80.2%	5.5%
Fermanagh	1,633	89.7%	8.1%	1.2%	80.4%	10.3%
Larne	651	90.9%	20.6%	0.0%	70.3%	9.1%
Limavady	729	90.6%	18.4%	2.8%	69.4%	9.4%
Lisburn	1,652	91.3%	17.7%	1.6%	72.0%	8.7%
Magherafelt	425	94.1%	17.3%	1.3%	75.5%	5.9%
Moyle	383	92.5%	8.5%	0.0%	84.0%	7.5%
Newry & Mourne	1,993	92.8%	12.4%	0.3%	80.2%	7.2%
Newtownabbey	1,422	90.3%	21.7%	0.7%	67.9%	9.7%
North Down	1,145	85.6%	15.9%	1.5%	68.1%	14.4%
Omagh	1,090	85.5%	11.3%	0.9%	73.3%	14.5%
Strabane	1,215	91.3%	8.9%	1.2%	81.2%	8.7%

Note: The allocation of allowances to District Council is based on the postcode of the recipient. There is evidence that this process is not equally accurate for all District Councils.

**Table 4.3: JSA claimants at February 2003: by District Council and as a percentage of the working age population**

District Council	All Claimants ( ' 000 = 100%)	Working age Population *	Claimants as % of Population
<b>All</b>	<b>35,176</b>	<b>1,025,700</b>	<b>3.4%</b>
Antrim	732	30,622	2.4%
Ards	1,152	45,595	2.5%
Armagh	968	32,823	2.9%
Ballymena	889	35,782	2.5%
Ballymoney	354	16,269	2.2%
Banbridge	462	25,490	1.8%
Belfast	8,319	168,305	4.9%
Carrickfergus	745	23,294	3.2%
Castlereagh	774	39,421	2.0%
Coleraine	1,293	34,224	3.8%
Cookstown	408	19,700	2.1%
Craigavon	1,360	48,671	2.8%
Derry	3,566	64,546	5.5%
Down	1,224	38,450	3.2%
Dungannon	592	28,434	2.1%
Fermanagh	1,633	34,514	4.7%
Larne	651	18,748	3.5%
Limavady	729	20,371	3.6%
Lisburn	1,652	66,720	2.5%
Magherafelt	425	24,086	1.8%
Moyle	383	9,426	4.1%
Newry & Mourne	1,993	51,983	3.8%
Newtownabbey	1,422	49,342	2.9%
North Down	1,145	46,812	2.4%
Omagh	1,090	29,055	3.8%
Strabane	1,215	23,017	5.3%

\* =NI Census 2001. Population of working age. Namely 16-59 for Females, and ages 16-64 for Males.

Note: The allocation of allowances to District Council is based on the postcode of the recipient.

There is evidence that this process is not equally accurate for all District Councils.

**Table 4.4: JSA claimants at February 2003: by Social Security Office and benefit position**

Social Security Office	Type of unemployment related benefit					
	All Claimants ( ' 000 = 100%)	All with benefit	Contribution based only	Contribution and income based	Income based only	No benefit in payment
<b>All</b>	<b>35,176</b>	<b>32,158</b>	<b>5,063</b>	<b>354</b>	<b>26,741</b>	<b>3,018</b>
Antrim	922	840	155	6	679	83
Armagh	889	768	72	9	687	120
Ballymena	1,000	900	179	11	710	100
Ballymoney	589	545	106	4	434	44
Ballynahinch	237	204	49	5	151	33
Banbridge	469	435	112	0	323	34
Bangor	1,088	940	175	17	747	149
Belfast - Andersonstown	1,979	1,910	221	27	1,663	68
Belfast - Corporation Street	1,943	1,884	210	16	1,659	58
Belfast - Falls Road	1,432	1,396	100	11	1,285	37
Belfast - Holywood Road	1,529	1,315	308	30	977	214
Belfast - Knockbreda	725	640	137	8	494	86
Belfast - Shaftsbury Square	1,170	1,117	189	21	907	52
Belfast - Shankill Road	1,207	1,133	152	21	960	73
Carrickfergus	768	688	147	0	541	80
Coleraine	1,348	1,237	208	5	1,024	112
Cookstown	334	293	35	0	258	42
Downpatrick	709	645	77	19	548	65
Dungannon	538	501	85	9	407	36
Enniskillen	1,724	1,546	135	20	1,391	178
Kilkeel	191	169	22	0	147	22
Larne	603	544	117	0	427	59
Limavady	660	597	119	16	462	63
Lisburn	900	777	223	11	543	122
Lisnagelvin	908	830	130	15	686	77
Londonderry / Foyle	2,730	2,564	256	15	2,292	167
Lurgan	966	870	186	9	675	95
Magherafelt	469	436	69	0	367	33
Newcastle	314	285	54	0	231	30
Newry	1,778	1,657	219	5	1,433	121
Newtownabbey	1,224	1,097	307	10	779	127
Newtownards	1,039	914	187	11	716	125
Omagh	1,066	918	120	10	789	148
Portadown	516	459	94	0	365	57
Strabane	1,211	1,105	108	14	982	106

**Table 4.5: JSA claimants at February 2003: by Social Security Office and benefit position**

Social Security Office	All Claimants ( ' 000 = 100%)	Type of unemployment related benefit			
		All with benefit	Contribution based only	Contribution and income based	Income based only
<b>All</b>	<b>35,176</b>	<b>91.4%</b>	<b>14.4%</b>	<b>1.0%</b>	<b>76.0%</b>
Antrim	922	91.0%	16.8%	0.6%	73.6%
Armagh	889	86.4%	8.1%	1.0%	77.3%
Ballymena	1,000	90.0%	17.9%	1.1%	71.0%
Ballymoney	589	92.5%	18.0%	0.7%	73.8%
Ballynahinch	237	86.0%	20.5%	2.0%	63.5%
Banbridge	469	92.7%	23.8%	0.0%	68.9%
Bangor	1,088	86.3%	16.1%	1.6%	68.6%
Belfast - Andersonstown	1,979	96.5%	11.2%	1.3%	84.0%
Belfast - Corporation Street	1,943	97.0%	10.8%	0.8%	85.4%
Belfast - Falls Road	1,432	97.4%	7.0%	0.7%	89.7%
Belfast - Holywood Road	1,529	86.0%	20.1%	2.0%	63.9%
Belfast - Knockbreda	725	88.2%	18.9%	1.1%	68.1%
Belfast - Shaftsbury Square	1,170	95.5%	16.2%	1.8%	77.6%
Belfast - Shankill Road	1,207	93.9%	12.6%	1.7%	79.5%
Carrickfergus	768	89.6%	19.1%	0.0%	70.4%
Coleraine	1,348	91.7%	15.4%	0.4%	75.9%
Cookstown	334	87.6%	10.4%	0.0%	77.2%
Downpatrick	709	90.9%	10.9%	2.7%	77.3%
Dungannon	538	93.2%	15.9%	1.7%	75.7%
Enniskillen	1,724	89.7%	7.9%	1.1%	80.7%
Kilkeel	191	88.4%	11.4%	0.0%	77.0%
Larne	603	90.2%	19.4%	0.0%	70.8%
Limavady	660	90.5%	18.1%	2.4%	70.0%
Lisburn	900	86.4%	24.8%	1.2%	60.4%
Lisnagelvin	908	91.5%	14.3%	1.6%	75.5%
Londonderry / Foyle	2,730	93.9%	9.4%	0.6%	84.0%
Lurgan	966	90.2%	19.2%	1.0%	70.0%
Magherafelt	469	92.9%	14.6%	0.0%	78.3%
Newcastle	314	90.6%	17.1%	0.0%	73.4%
Newry	1,778	93.2%	12.3%	0.3%	80.6%
Newtownabbey	1,224	89.6%	25.1%	0.9%	63.7%
Newtownards	1,039	88.0%	18.0%	1.1%	68.9%
Omagh	1,066	86.1%	11.2%	0.9%	74.0%
Portadown	516	89.0%	18.3%	0.0%	70.7%
Strabane	1,211	91.2%	8.9%	1.2%	81.1%

**Table 5.1: JSA claimants by Government Office Region:  
February 2002 and February 2003**

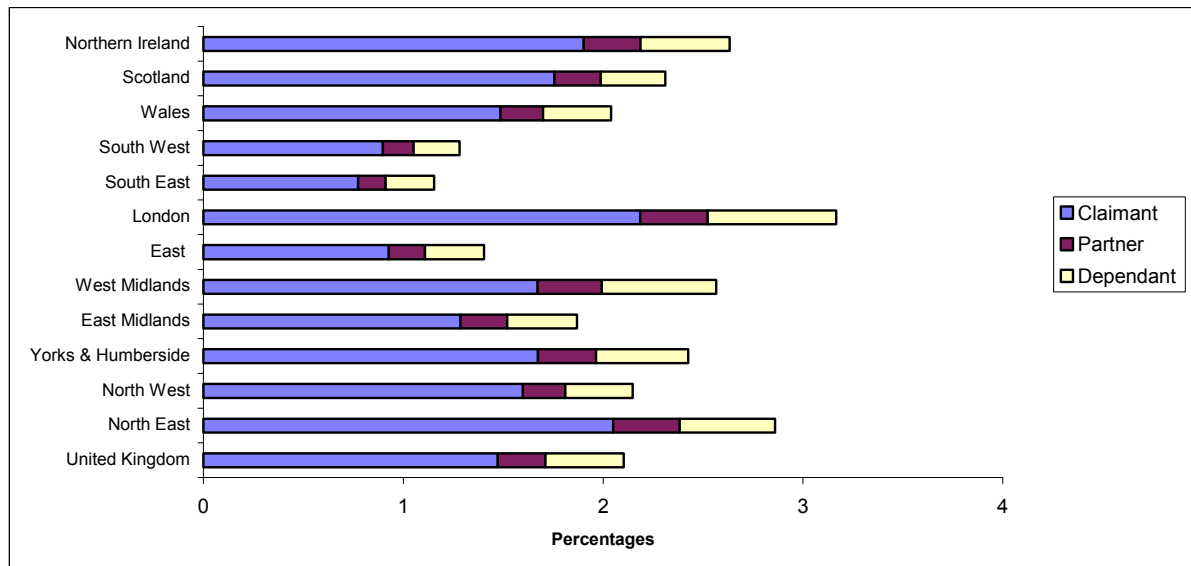
<i>Thousands</i>			
GOR	February 2002	February 2003	Annual % change
<b>United Kingdom</b>	<b>1,023</b>	<b>1,012</b>	<b>-1.1</b>
North East	65	60	-8.8
North West	130	124	-4.4
Yorks & Humberside	98	94	-3.9
East Midlands	65	64	-2.4
West Midlands	100	101	0.6
East	61	64	4.3
London	167	174	4.5
South East	76	81	6.7
South West	58	55	-4.1
Wales	53	51	-4.2
Scotland	113	111	-2.2
Northern Ireland	37	33	-10.8

**Table 5.2: Beneficiaries of income - based JSA by type and GOR: February 2003**

GOR	Type of beneficiary				Beneficiaries as % of regions population aged under state retirement age <sup>(1)</sup> %
	All	Claimant	Partner	Dependant	
<b>United Kingdom</b>	<b>1,027</b>	<b>720</b>	<b>116</b>	<b>191</b>	<b>2.1</b>
North East	60	43	7	10	2.9
North West	121	90	12	19	2.1
Yorks & Humberside	99	69	12	19	2.4
East Midlands	64	44	8	12	1.9
West Midlands	112	73	14	25	2.6
East	62	41	8	13	1.4
London	196	136	21	40	3.2
South East	77	51	9	16	1.2
South West	50	35	6	9	1.3
Wales	49	35	5	8	2.1
Scotland	100	76	10	14	2.3
Northern Ireland	37	27	4	6	2.6

<sup>(1)</sup> 65 for men and 60 for women. Based on mid-year 2001 population estimates.

**Chart 5A: Beneficiaries of income - based JSA by type as a percentage of the population aged under state retirement age (1) : February 2003**

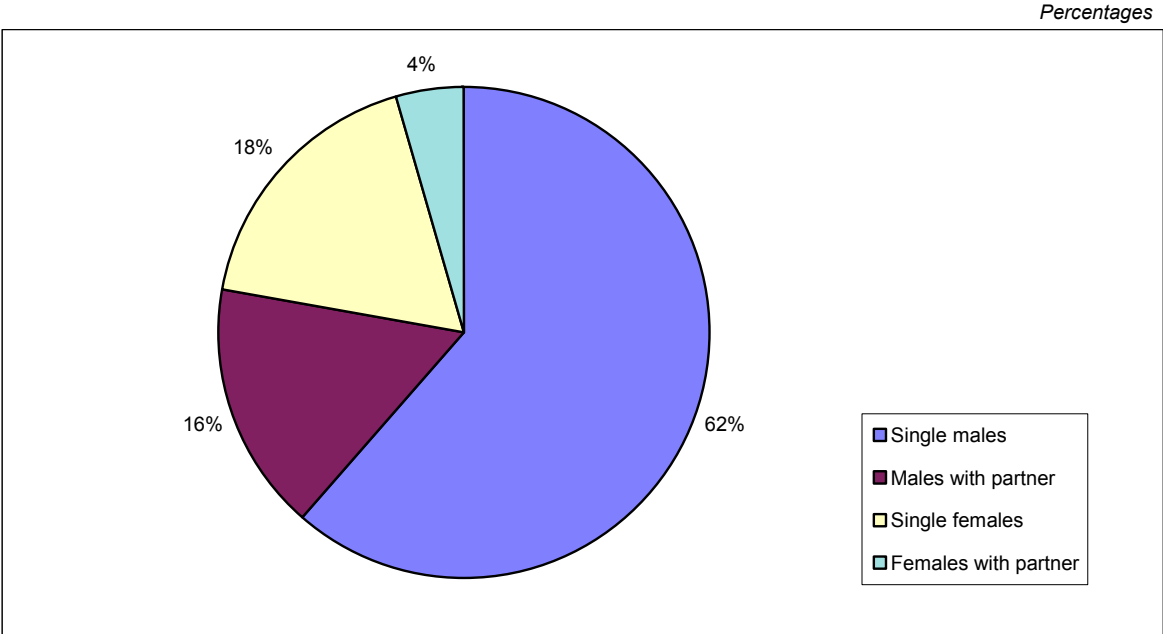


<sup>(1)</sup> 65 for men and 60 for women. Based on mid-year 2001 population estimates.

**Table 6.1 Unemployed JSA claimants by gender, marital status and benefit entitlement - February 2003**

Claimants	All Claimants ('000=100%)	All with benefit	Type of unemployment related benefit			
			Contribution based only %	Contribution and income based %	Income based only %	No benefit in payment %
<b>All</b>	<b>35,176</b>	<b>91.4</b>	14.4	1.0	76.0	8.6
<b>All males</b>	<b>27,372</b>	<b>93.1</b>	13.5	1.2	78.4	6.9
Single	21,626	96.7	13.4	0.3	83.0	3.3
With partner	5,746	79.4	13.8	4.7	60.9	20.6
<b>All females</b>	<b>7,804</b>	<b>85.6</b>	17.6	0.2	67.8	14.4
Single	6,235	93.8	13.3	0.2	80.3	6.2
With partner	1,569	53.0	34.6	0.0	18.4	47.0

**Chart 6A: Unemployed JSA claimants by gender and marital status - February 2003**



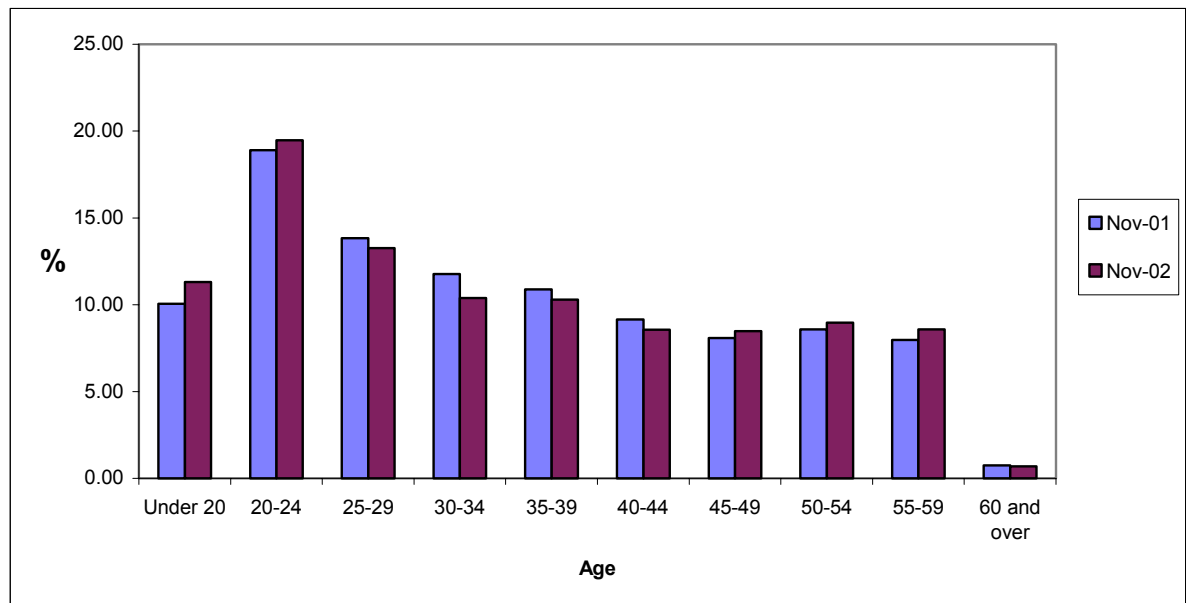
**Table 6.2 Unemployed JSA claimants by age and benefit entitlement - February 2003**

Claimants age	All Claimants ( <sup>'000</sup> =100%)	All with benefit	Type of unemployment related benefit			
			Contribution based only %	Contribution and income based %	Income based only %	No benefit in payment %
<b>All ages</b>	<b>35,176</b>	<b>91.4</b>	14.4	1.0	76.0	8.6
Under 20	3,977	96.3	1.2	0.0	95.2	3.7
20-24	6,846	95.9	18.9	0.2	76.8	4.1
25-29	4,668	95.2	20.4	1.0	73.8	4.8
30-34	3,653	94.5	20.4	1.1	73.1	5.5
35-39	3,625	93.8	16.3	1.9	75.7	6.2
40-44	3,014	90.8	12.1	2.4	76.4	9.2
45-49	2,982	86.2	11.1	1.3	73.7	13.8
50-54	3,152	83.1	11.9	1.0	70.2	16.9
55-59	3,016	77.8	9.7	1.0	67.1	22.2
60 and over	244	80.5	30.3	6.3	43.9	19.5

**Table 6.3: Unemployed claimants by gender and age:  
February 2002 and February 2003**

Claimants age	Feb-02			Feb-03		
	Total ('000=100%)	Men %	Women %	Total ('000=100%)	Men %	Women %
<b>All ages</b>	<b>38,260</b>	77.5	22.5	<b>35,176</b>	77.8	22.2
Under 20	3,849	62.8	37.2	3,977	64.6	35.4
20-24	7,228	74.3	25.7	6,846	75.8	24.2
25-29	5,295	81.8	18.2	4,668	82.7	17.3
30-34	4,506	84.3	15.7	3,653	84.7	15.3
35-39	4,169	83.9	16.1	3,625	83.0	17.0
40-44	3,502	81.3	18.7	3,014	79.5	20.5
45-49	3,093	78.7	21.3	2,982	78.3	21.7
50-54	3,283	73.8	26.2	3,152	76.3	23.7
55-59	3,051	73.3	26.7	3,016	75.2	24.8
60 and over	285	98.3	1.7	244	100.0	0.0

**Chart 6B: Unemployed claimants by gender and age:  
February 2002 and February 2003**



**Table 7.1: Unemployed claimants with contribution-based benefit entitlement (1) by average weekly amount - 1999-2003**

	All		Personal claim only (2)	
	Number	Average amount £pw	Number	Average amount £pw
<b>JSA(1)</b>				
Feb-99	<b>6,060</b>	<b>£47.17</b>	6,060	£47.17
Feb-00	<b>5,283</b>	<b>£48.40</b>	5,283	£48.40
Feb-01	<b>5,181</b>	<b>£48.86</b>	5,181	£48.86
Feb-02	<b>5,362</b>	<b>£49.72</b>	5,362	£49.72
Feb-03	<b>5,417</b>	<b>£50.50</b>	5,417	£50.50

1. Includes claimants in receipt of income-based JSA who would be entitled to the contributory element.

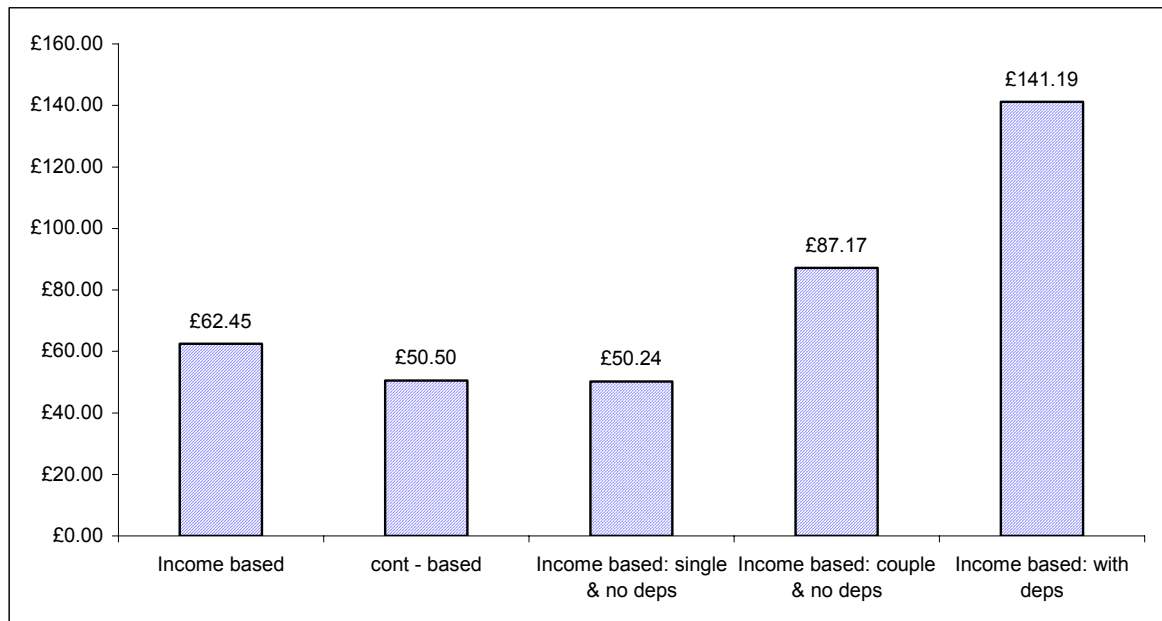
2. Adult dependency increase is not payable to claimants coming onto benefit after October 1996 and ceased in April 1997.

**Table 7.2: Unemployed claimants with income-based benefit (1) by average weekly amount - 1999-2003**

	All		Single without dependants		Couple without dependants		Single or couple with dependants	
	Number	Average amount £pw	Number	Average amount £pw	Number	Average amount £pw	Number	Average amount £pw
<b>JSA(1)</b>								
Feb-99	<b>46,437</b>	<b>£62.26</b>	34,570	£47.33	3,388	£73.66	8,479	£118.60
Feb-00	<b>35,964</b>	<b>£60.31</b>	28,712	£47.89	2,017	£78.82	5,236	£121.26
Feb-01	<b>32,951</b>	<b>£61.90</b>	26,695	£48.79	1,722	£81.77	4,534	£131.57
Feb-02	<b>30,064</b>	<b>£61.19</b>	25,007	£49.54	1,509	£84.15	3,548	£133.51
Feb-03	<b>27,095</b>	<b>£62.45</b>	22,590	£50.24	1,460	£87.17	3,045	£141.19

1. Includes claimants in receipt of income-based JSA who would be entitled to the contributory element. Only the amount of income-based award above the level of contributon based award is included.

**Chart 7A: Average weekly amount of JSA in payment by benefit and family type - February 2003**



## ANNEX 1: TECHNICAL DETAILS

A 20% sample of all claimants of JSA is conducted on the second Thursday in February, May, August and November of each year. The sample data are used to make estimates of the total number of JSA claimants in Northern Ireland.

The JSA QSE covers all unemployed people who claim JSA, including credits only cases. The JSA QSE also collects data on participants of government training schemes. However, analysis of this group is not yet possible.

The data is extracted from the JSA payment system (JSAPS). Claimants are selected for the sample based on National Insurance endings. The same endings are used each quarter to ensure continuity. The data is physically extracted from JSAPS 21 days after the enquiry date. This allows for claims, which had not been put on the system at the enquiry date, or claims, which had ended before the enquiry date and should have been excluded.

The Department of Enterprise Trade and Investment (DETI) unemployment count is used to gross up the sample. The JSA QSE is taken from the same source as the DETI unemployed claimant count. The DETI count also includes clerically processed claims, which means these are also reflected in the results. Temporarily stopped cases are now omitted for post-JSA cases, as these on average number less than fifty. Both the JSA QSE and the DETI count allow 21 days after the enquiry date for late claims and early terminations.

Automated validation checks have been carried out on data from November 1998 only. The JSA QSE is designed to cover all people who claim JSA, including those on government training schemes, however the training scheme cases are not included in this analysis. The data are not seasonally adjusted. DETI produce a headline count of claimant unemployment each month. DETI exclude claimants on government training schemes in their count. Data from each can be used to complement one another to provide consistent estimates of the number of unemployed JSA claimants.

## **ANNEX 2: BACKGROUND TO JSA**

Jobseeker's Allowance (JSA) replaced Unemployment Benefit and Income Support for unemployed people on 7 October 1996. JSA is for people who are unemployed or working less than 16 hours a week, are available for work for at least 40 hours a week, actively looking for work, and people on a Government training scheme. They must not be in relevant education and be under pensionable age (i.e. 60 years for females and 65 for males). Young people aged 16-17 are generally excluded from claiming, however there are exceptions such as suffering severe hardship.

There are two routes of entry into JSA, contribution-based JSA and income-based JSA. Contribution-based is payable for up to 6 months to those people who have paid sufficient national insurances and is taxable. Income-based JSA is means-tested and taxable. It is usually paid when someone does not qualify for contribution-based or as a top up to contribution-based JSA. Claimants can not claim both income-based and contribution-based JSA, however in this publication we have classified claimants who receive income-based JSA but who have underlying rights to contribution-based JSA into a group on their own.

Credits are awarded for each week of claiming JSA. Credits can be awarded even though the person is not being paid JSA. This is the case when either they have not paid enough contributions, they already have received their full entitlement of contribution-based JSA, they are not entitled to income-based JSA or they choose not to claim JSA.

Benefit may be disallowed if the claimant does not fulfil the basic 'labour market' conditions. In some cases even if you do satisfy the basic conditions your benefit may be 'sanctioned' and payment stopped for a limited period. In this instance you may be eligible for a hardship payment which is a reduced rate income-based JSA payment.

### ANNEX 3: SAMPLING ERRORS

The estimates in the tables in this report are based on a 20% sample and are therefore subject to 'sampling error', i.e. the number of cases in the sample November produce rated up population estimates which are lower or higher than the true population value.

An indication of the effect of these sampling errors can be gained from the tables of 'confidence intervals' shown below. The figures shown in this report are a best estimate based on the sample data. The true number will lie somewhere in a range around this estimate. The size of this range is based on a "95% confidence interval" i.e. there is a 1 in 20 chance that the true value lies outside this range. Thus, for example, an estimate of 1,000 is really showing that the true value could lie anywhere in the range of 876 to 1,124. This applies only to estimates of numbers of cases and not to other features, e.g. amounts of benefit.

The figures in the table below give the 95% confidence intervals for the true value in the population, based on the estimated value from the 5% sample.

Estimated Value	95% Confidence Interval (+/-)	Confidence interval as a % of the estimate (+/-)
<i>150</i>	<i>48</i>	<i>32</i>
<i>300</i>	<i>68</i>	<i>23</i>
<i>400</i>	<i>78</i>	<i>20</i>
<i>500</i>	<i>88</i>	<i>18</i>
<i>600</i>	<i>96</i>	<i>16</i>
<i>700</i>	<i>104</i>	<i>15</i>
<i>800</i>	<i>111</i>	<i>14</i>
<i>900</i>	<i>118</i>	<i>13</i>
<i>1000</i>	<i>124</i>	<i>12</i>
<i>2000</i>	<i>175</i>	<i>9</i>
<i>3000</i>	<i>215</i>	<i>7</i>
<i>4000</i>	<i>248</i>	<i>6</i>
<i>5000</i>	<i>277</i>	<i>6</i>
<i>6000</i>	<i>304</i>	<i>5</i>
<i>7000</i>	<i>328</i>	<i>5</i>
<i>8000</i>	<i>351</i>	<i>4</i>
<i>9000</i>	<i>372</i>	<i>4</i>
<i>10000</i>	<i>392</i>	<i>4</i>
<i>20000</i>	<i>554</i>	<i>3</i>
<i>30000</i>	<i>679</i>	<i>2</i>
<i>40000</i>	<i>784</i>	<i>2</i>
<i>50000</i>	<i>877</i>	<i>2</i>

*Warning: Figures in italics should be used with caution*

#### List of Tables

**Section 1: Caseload by benefit entitlement**

Table 1.1 Unemployed Claimants by benefit entitlement - 1997 to 2003

Table 1.2 Unemployed Claimants by benefit entitlement - 1997 to 2003

**Section 2: Duration of claim**

Table 2.1 Unemployed Claimants by duration of claim – February 2000 to February 2003

Table 2.2 Unemployed Claimants by benefit entitlement and duration of current claim – February 2003

Table 2.3 Unemployed Claimants by gender, age and duration of current claim – February 2003

**Section 3: Claims without contribution and income-based benefit**

Table 3.1 Unemployed Claimants : receipt/non-receipt of contribution-based benefit by gender – February 2002 and February 2003

Table 3.2 Unemployed Claimants not in receipt of contribution-based benefit by gender and benefit reason – February 2002 and February 2003

Table 3.3 Unemployed Claimants : receipt/non-receipt of unemployment-related benefit by gender – February 2002 and February 2003

Table 3.4 Unemployed Claimants not in receipt of unemployment-related benefit by gender and benefit reason – February 2002 and February 2003

**Section 4: District Council and Social Security Office analysis**

Table 4.1 JSA Claimants at February 2003: by District Council and benefit position

Table 4.2 JSA Claimants at February 2003: by District Council and benefit position

Table 4.3 JSA Claimants at February 2003: by District Council and as a percentage of the working age population

Table 4.4 JSA Claimants at February 2003: by Social Security Office and benefit position

Table 4.5 JSA Claimants at February 2003: by Social Security Office and benefit position

### **Section 5: United Kingdom Regional analysis**

Table 5.1 JSA Claimants by Government Office Region: February 2002 and February 2003

Table 5.2 Beneficiaries of income-based JSA by type and Government Office Region: February 2003

### **Section 6: Gender, age and marital status**

Table 6.1 Unemployed JSA Claimants by gender, marital status and benefit entitlement – February 2003

Table 6.2 Unemployed JSA Claimants by age and benefit entitlement - February 2003

Table 6.3 Unemployed Claimants by gender and age – February 2002 and February 2003

### **Section 7: Amounts of Benefit**

Table 7.1 Unemployed Claimants with contribution-based benefit entitlement by average weekly amount – 1999 - 2003

Table 7.2 Unemployed Claimants with income-based benefit by average weekly amount – 1999 - 2003

**ISSN 1475-5769**