

Department for Social Development

**Jobseeker's
Allowance
Summary Statistics**

DSD

**Department for
Social Development**

November 2001



A National Statistics Publication

Department for Social Development

**Jobseeker's
Allowance
Summary Statistics**

November 2001

Published BY

Statistics & Research Branch
Department for Social Development
Room 3 Block 4,
The Village, Stormont,
Belfast, BT4 3SJ

Telephone: 02890 5/22803
GTN (440) 22803
Fax: 02890 5/22763
e-mail: srb@dndi.gov.uk

ISSN 1475-5769

Further Statistics for Northern Ireland relating to Social Security Benefits can be obtained by visiting our website;

<http://www.dndi.gov.uk/statistics-research/introduction.asp>

Statistics relating to Social Security Benefits in Great Britain can be obtained by visiting the following website;

<http://www.dss.gov.uk/asd/online.html>

Contents

	Page
Introduction	3
Glossary of terms and conventions	4
Main Findings	6
Section 1: Caseload by Benefit entitlement	9
Section 2: Duration of Claim	11
Section 3: Claimants without contribution and income-based benefit	13
Section 4: District Council and Social Security Office Analysis.....	16
Section 5: United Kingdom Regional Analysis	21
Section 6: Gender, age and marital status	23
Section 7: Amounts of benefit	26
Annex 1: Technical details.....	28
Annex 2: Background to JSA.....	29
Annex 3: Sampling Errors.....	30
List of Tables	31

Introduction

This publication presents data from the Jobseeker's Allowance (JSA) Quarterly Statistical Enquiry (QSE), and also historical data on unemployed claimants of Unemployment Benefit and Income Support. Data is based on a 20% sample of all JSA claimants which is conducted on the second Thursday of February, May, August and November. The publication provides numbers of unemployed claimants for each quarter from February 1996 through to May 2001 with the exception of November 1996 which is unavailable. There is a more in-depth analysis for November 2001 and comparisons with the previous year.

Jobseeker's Allowance (JSA) replaced Unemployment Benefit and Income Support for unemployed people on 7 October 1996. JSA can be claimed by people who are available for and actively seeking employment, including those in work for less than 16 hours a week on average, and by people on a Government training scheme. They must not be in relevant education and must be under pensionable age (i.e. 60 years for females and 65 for males). Young people aged 16-17 are generally excluded from claiming, however there are exceptions such as suffering severe hardship (See Annexe 2 for more details).

Jobseeker's Allowance data is extracted from the JSA payment system (JSAPS). Unemployment Benefit data is extracted from the National Unemployment Benefits System (NUBS). Claimants are selected for the 20% sample based on National Insurance number endings. The Department of Enterprise Trade and Investment (DETI) unemployment count is used to gross up the sample (See Technical Details in Annexe 1).

Further advice on analysis can be obtained from the contact point on page 3.

Glossary of Terms and Conventions

Glossary of Terms

Benefit entitlement

Contribution-based:-

Benefit based on National Insurance contributions paid at a personal rate for up to 6 months.

Income-based:-

Benefit based on claimants and dependants needs payable for as long as qualifying conditions are met.

Contribution and income-based:-

A claimant can receive either contribution or income-based benefit, but not both. However for the purposes of this publication, claimants who satisfy the conditions for contribution-based JSA, but receive income-based JSA are shown separately.

Child

A dependant aged under 16. (Also dependants aged 16-18 for whom Child Benefit is in receipt).

Couple

Two persons either married or living together as husband and wife.

Dependant

A person who is not a *Partner* and whose resources and requirements are included with those of the claimant.

Disallowances

Refusals of claims to benefit because of failure to satisfy the qualifying conditions.

Duration of claim

The length of time a claimant has been unemployed in the current claim.

Income Support (IS)

Income Support is an income-related benefit which provides financial help for people who are not required to be available for work, are not in remunerative work and whose income from all sources is below a minimum level set by parliament. JSA replaced Income Support for the unemployed in October 1996.

Marital status

Whether the claimant is without a partner (single) or with a partner (couple) - see Partner.

Partner

One of a married or unmarried couple, living together.

Sanctions

The non-payment of JSA for a specified period because the jobseeker has unreasonably caused or perpetuated their own unemployment.

Single

A claimant who is not living as one of a couple.

Unemployment related benefits

Benefits paid due to unemployment. From October 1996 they are Jobseeker's Allowance, including JSA (Cont), JSA (IB) or Hardship payments. Prior to October 1996 they were Unemployment Benefit and/or Income Support.

Conventions

JSA	Jobseeker's Allowance
JSA (Cont)	Contribution-based JSA
JSA (IB)	Income-based JSA
IS	Income Support
GOR	Government Office Region
-	Nil or Negligible
.	Not applicable
n/a	Not available
<i>Italics</i>	<i>Counts in italics are not statistically reliable</i>

Main findings

This section summarises the key findings of the November 2001 JSA Summary Statistics.

Section 1 - Caseload and benefit entitlement

The overall number of unemployed claimants fell by over three thousand (3,153) between November 2000 and November 2001 to 36,854. The majority of this reduction in numbers was accounted for by recipients of income-based benefit - a fall of 2,782 in the year to November 2001.

The proportion of the overall caseload in receipt of only contribution-based JSA increased to 12.5% in November 2001, from 11.3% in the previous year. This figure is lower than that of Great Britain, which has a proportion of the overall caseload in receipt of only contribution-based benefit of 16.9%.

Section 2 - Duration of claim

There was a slightly higher proportion of claims of short duration (less than 3 months) in November 2001, 34.6% compared to 33.2% a year earlier. Claims of less than 3 months are a proxy for new claims.

There were also a slightly larger proportion of claims of more than a year in November 2001 (32.5%) than in November 2000 (32.4%). Claims of long duration (more than one year) in Great Britain fell to 20.5% of the overall caseload, from 23.8% in the previous year.

Between November 1998 and November 2001 the proportion of JSA claimants who had been out of work for one year or more decreased from 47.3% to 32.5% of all JSA claimants. Some of this decrease will be due to changing economic circumstances. But, it will also be impacted upon by the introduction of the New Deal for 18 to 24 year olds and the New Deal for 25+ both of which are designed to assist the longer-term unemployed into work or training.

When compared with the corresponding figures for Great Britain, Northern Ireland is shown to have a greater proportion of claims of long duration (more than one year), namely 32.5% of the overall caseload in November 2001, compared to the GB figure of 20.5%.

Almost two thirds (61.9%) of female and almost half (47.7%) of male unemployed claimants had a current claim duration of less than 6 months in November 2001, with a far greater percentage of males having a claim duration of over 1 year.



Section 3 - Claimants without contribution and/or income-based benefit

The proportion of claimants not receiving contribution-based benefit has decreased to 86.5% in November 2001 from 87.6% in the previous year. The main reasons for claimants not receiving contribution-based benefit in November 2001 are contribution deficiency (61.1% of all claimants) and entitlement exhausted (17.1% of all claimants).

This was also the case in Great Britain with figures of 58.4% and 13.8% respectively.

The number of JSA claimants who are not entitled to unemployment related benefit fell slightly to 8.4% in November 2001 from 8.7% in the previous year. The corresponding figures for Great Britain between November 2000 and November 2001 rose slightly from 9.6% to 10.1% of the overall caseload. The main reason for non-entitlement once again was contribution deficiency and entitlement exhausted.

Section 4 – District Council and Social Security Office analysis

The proportion of JSA claimants with benefit varied between 83.9% in Banbridge to 95.8% in Belfast.

Unemployed claimants in Moyle and Strabane were least likely to be in receipt of only JSA Contribution-based benefit in November 2001 (7.0% compared to 12.5% for Northern Ireland as a whole and 25.2% in Larne).

The proportion of JSA claimants in receipt of only JSA Income-based benefit in November 2001 varied between 63.8% in North Down and 85.7% in Belfast.

JSA claimants as a proportion of people of working age in Northern Ireland in November 2001 was 3.6%. These proportions range from 1.9% in Banbridge and Castlereagh to 6.7% in Derry.

Foyle Social Security Office (Londonderry) had the largest share of the JSA caseload with 3,253 claimants (8.8% of the total caseload) at November 2001.

Kilkeel Social Security Office had only 193 claimants (0.5% of the total caseload).

Larne Social Security Office had the highest proportion of contribution based only claimants (26.5%) while Falls Road Social Security Office had the lowest (4.8%).



Section 5 – United Kingdom Regional analysis

JSA claimants in the United Kingdom have decreased by 7.4% in the year to November 2001. There has been a decrease in every Government Office Region, ranging from 2.0% in London to 12.3% in Wales.

JSA Income-based Beneficiaries as a proportion of the population under state retirement age in the United Kingdom in November 2001 was 2.0%. This is lower than the corresponding figure for Northern Ireland (2.9%). These proportions for the Government Office Regions range from 1.0% in the South East to 3.1% in the North East.

Section 6 - Gender, age and marital status

Men are more likely to claim JSA (76.3% of claimants in November 2001). This is partly because income-based benefit is claimed on behalf of couples by only one partner, normally the man. The corresponding figure for men in Great Britain in November 2001 was 75.7% of claimants.

Female unemployed claimants are more likely than males to be in receipt of only JSA contribution-based benefit in November 2001 (15.9% compared with 11.5%) but less likely to receive JSA income-based (69.8% compared to 80.7%).

The age distribution of unemployed claimants has changed very little over the year to November 2001. Over a quarter (29%) of all claimants are aged under 25, over half (54%) are aged 25-49 and just under a fifth (17%) are aged 50 or over. The figures for Great Britain with regards to age groups in November 2001 were similar.

Section 7 - Amounts of benefit

Single claimants without dependants tend to receive the lowest amounts of benefit, on average £49.83 per week for contribution-based and £49.54 for those with income-based. Recipients of income-based JSA with partners and/or dependants receive higher amounts (£84.99 for couples without dependants and £132.99 for single/couples with dependants).

However the former account for only 4% of all JSA claimants, whilst the latter account for 10%. The corresponding figures for Great Britain in November 2001, with regards to JSA with partners and dependants, are similar.



Table 1.1: Unemployed Claimants by benefit entitlement - 1996 to 2001

	Type of unemployment related benefit					
	All Claimants	All with benefit	Contribution based only	Contribution and income based	Income based only	No benefit in payment
Unemployment Benefit/Income Support						
Aug-96	93,263	83,826	12,726	1,468	69,632	9,437
Jobseeker's Allowance						
Feb-97	67,541	62,089	5,914	826	55,349	5,452
May-97	61,309	56,765	3,646	772	52,346	4,544
Aug-97	65,727	60,889	6,570	649	53,669	4,838
Nov-97	58,305	54,242	5,054	586	48,602	4,063
Feb-98	59,161	55,049	5,807	622	48,620	4,112
May-98	55,323	51,552	4,720	586	46,246	3,771
Aug-98	61,175	56,914	6,716	679	49,519	4,261
Nov-98	54,327	50,443	5,076	525	44,842	3,884
Feb-99	55,796	51,834	5,397	663	45,774	3,962
May-99	51,137	47,561	4,423	642	42,496	3,577
Aug-99	52,652	48,339	5,383	538	42,417	4,313
Nov-99	43,720	40,383	4,035	410	35,939	3,337
Feb-00	44,018	40,756	4,792	491	35,473	3,262
May-00	42,255	38,900	4,466	489	33,945	3,355
Aug-00	44,123	40,667	5,351	444	34,872	3,456
Nov-00	40,007	36,527	4,536	429	31,562	3,480
Feb-01	40,971	37,772	4,822	359	32,592	3,199
May-01	38,766	35,632	4,313	359	30,961	3,133
Aug-01	42,234	38,901	5,660	391	32,850	3,333
Nov-01	36,854	33,764	4,616	369	28,780	3,090

Note: No figures available for November 1996

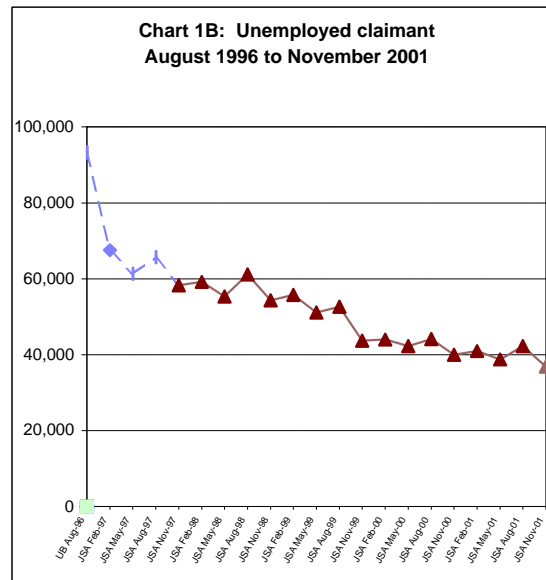
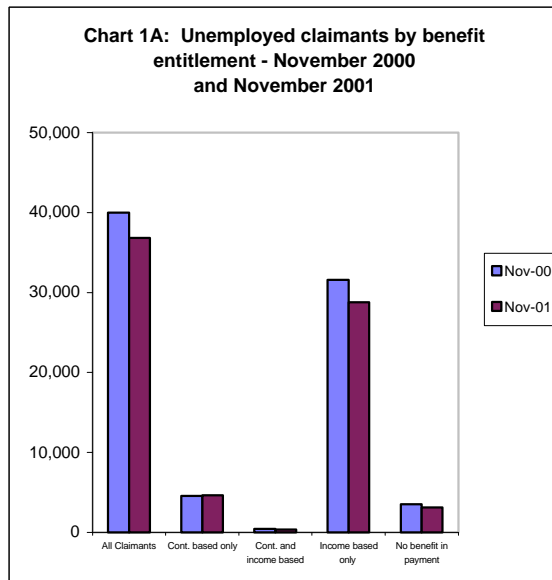


Table 1.2: Unemployed Claimants by benefit entitlement - 1996 to 2001

	All Claimants (*000=100%)	All with benefit %	Type of unemployment related benefit			
			Contribution based only %	Contribution and income based %	Income based only %	No benefit in payment %
Unemployment Benefit/Income Support						
Aug-96	93,263	89.9	13.6	1.6	74.7	10.1
Jobseeker's Allowance						
Nov-97	58,305	93.0	8.7	1.0	83.4	7.0
Nov-98	54,327	92.9	9.3	1.0	82.5	7.1
Nov-99	43,720	92.4	9.2	0.9	82.2	7.6
Nov-00	40,007	91.3	11.3	1.1	78.9	8.7
Nov-01	36,854	91.6	12.5	1.0	78.1	8.4

Note: No figures available for November 1996

Chart 1C: Unemployed Claimants by benefit entitlement - 1996 to 2001

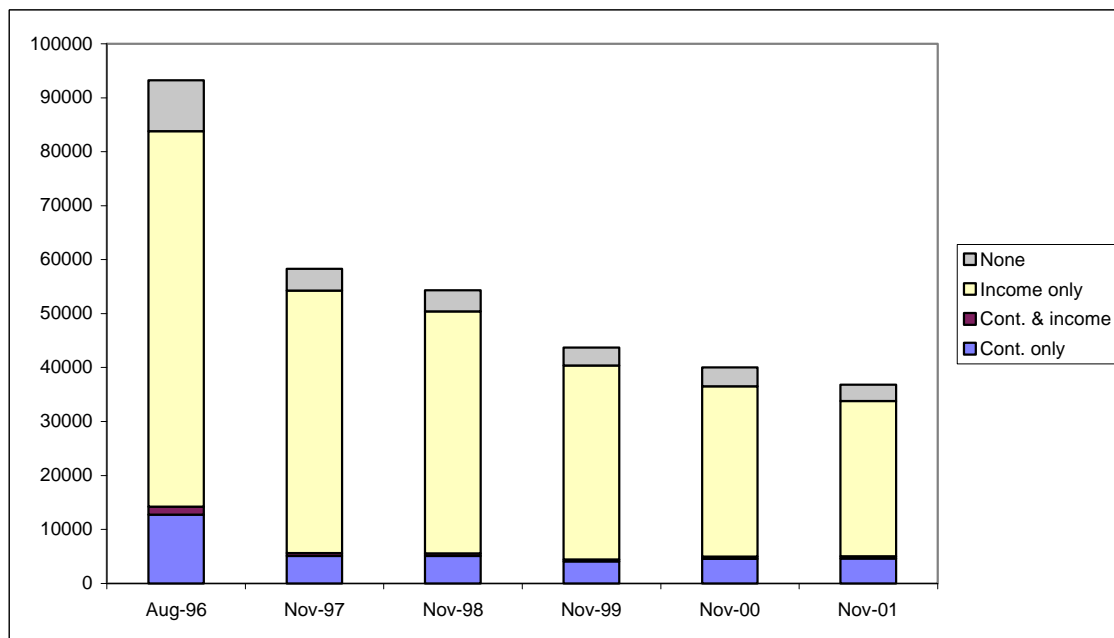


Table 2.1: Unemployed Claimants by duration of claim - November 1998 to November 2001

Duration	Nov-98	Nov-99	Nov-00	Nov-01
All claimants ('000= 100%)	54,327	43,720	40,007	36,854
Under 3 months	14,251	13,412	13,272	12,735
3 to under 6 months	7,582	6,891	7,267	6,081
6 to under 12 months	6,788	6,763	6,507	6,076
1 to under 2 years	8,374	6,079	6,192	6,147
2 years or over	17,332	10,575	6,769	5,816

Duration	Nov-98	Nov-99	Nov-00	Nov-01
All claimants ('000= 100%)	100%	100%	100%	100%
Under 3 months	26.2	30.7	33.2	34.6
3 to under 6 months	14.0	15.8	18.2	16.5
6 to under 12 months	12.5	15.5	16.3	16.5
1 to under 2 years	15.4	13.9	15.5	16.7
2 years or over	31.9	24.2	16.9	15.8

Chart 2A: Unemployed Claimants by duration of current claim - November 2001

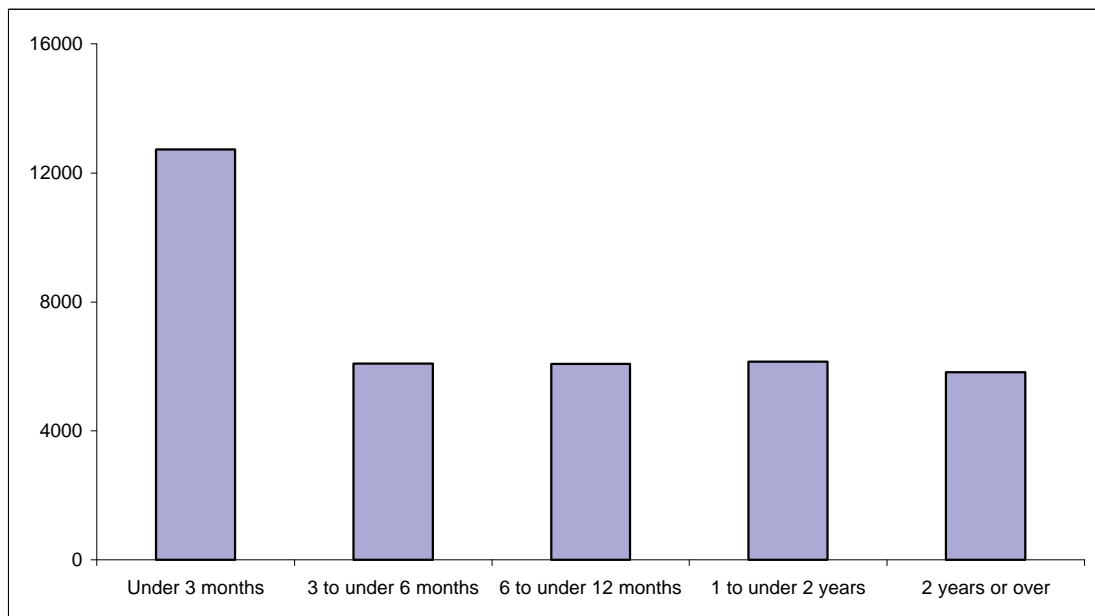


Table 2.2: Unemployed Claimants by benefit entitlement and duration of current claim - November 2001

	All Claimants	All with benefit	Type of unemployment related benefit			
			Contribution based only	Contribution and income based	Income based only	No benefit in payment
Duration						
All ('000=100%)	36,854	33,764	4,616	369	28,780	3,090
% up to 2 weeks	6.7	5.3	13.2	4.1	4.1	22.3
% 2 to under 6 weeks	12.5	12.2	25.9	29.2	9.8	15.4
% 6 to under 13 weeks	15.3	15.3	31.5	32.1	12.5	15.1
% 13 to under 26 weeks	16.5	16.8	29.4	34.6	14.6	13.1
% 26 to under 39 weeks	10.1	10.2	0.0	0.0	11.9	9.4
% 39 weeks to under 1 year	6.4	6.3	0.0	0.0	7.4	6.9
% 1 to under 2 years	16.7	17.1	0.0	0.0	20.1	11.7
% 2 years or over	15.8	16.7	0.0	0.0	19.6	6.0

Table 2.3 Unemployed Claimants by gender, age and duration of current claim - November 2001

Age	All Claimants ('000=100%)	Duration of current claim			
		Under 6 months %	6 months to under 1 year %	1 to under 2 years %	2 years or more %
All persons	36,854	51.1	16.5	16.7	15.8
Under 25	10,541	74.0	16.8	6.7	2.6
25 to 49	19,783	44.6	17.4	20.9	17.0
50 or over	6,530	33.5	13.1	20.1	33.3
Males	28,124	47.7	16.8	17.7	17.8
Under 25	7,159	72.7	17.4	7.0	2.9
25 to 49	16,071	41.9	17.4	21.9	18.8
50 or over	4,894	30.1	14.0	19.6	36.3
Females	8,730	61.9	15.4	13.4	9.3
Under 25	3,382	76.7	15.4	5.9	1.9
25 to 49	3,712	56.3	17.7	16.8	9.3
50 or over	1,636	43.9	10.4	21.5	24.2



Table 3.1 Unemployed claimants : receipt / non-receipt of contribution-based benefit by gender - November 2000 and November 2001

	Nov-00		Nov-01		% All males	% All females
	Total	% All claimants	Total	% All claimants		
All claimants	40,007	100.0	36,854	100.0	100.0	100.0
Claimants in receipt of contribution-based benefit(1)	4,965	12.4	4,985	13.5	12.6	16.6
Claimants not in receipt of contribution-based benefit	35,042	87.6	31,870	86.5	87.4	83.4

1. Includes claimants in receipt of income-based JSA, but who would also be entitled via the contributory route.

Table 3.2: Unemployed claimants not in receipt of contribution-based benefit by gender and benefit reason - November 2000 and November 2001

Reason for non-entitlement	Nov-00		Nov-01		% All males	% All females
	Total	% All claimants	Total	% All claimants		
All without JSA(C)	35,042	87.6	31,870	86.5	87.4	83.4
(% by claimants):						
Waiting days	394	1.0	338	0.9	1.0	0.8
Entitlement exhausted	6,990	17.5	6,299	17.1	18.9	11.1
Entitlement not yet determined	1,059	2.6	1,855	5.0	4.4	7.0
Contribution deficiency	25,519	63.8	22,514	61.1	60.9	61.7
Benefit disallowed or sanctioned(1)	604	1.5	442	1.2	1.2	1.3
Other	26	0.1	10	0.0	0.0	0.1

1. Includes claimants who lose entitlement because they have earnings or income above prescribed levels

Table 3.3: Unemployed claimants: receipt / non-receipt of unemployment-related benefit by gender - November 2000 and November 2001

	Nov-00		Nov-01			
	Total	% All claimants	Total	% All claimants	% All males	% All females
All claimants	40,007	100.0	36,854	100.0	100.0	100.0
Claimants in receipt of unemployment-related benefit	36,527	91.3	33,764	91.6	93.2	86.4
Claimants not in receipt of unemployment-related benefit	3,480	8.7	3,090	8.4	6.8	13.6

Table 3.4: Unemployed claimants not in receipt of unemployment-related benefit by gender and benefit reason - November 2000 and November 2001

Reason for non-entitlement	Nov-00		Nov-01			
	Total	% All claimants	Total	% All claimants	% All males	% All females
All without JSA	3,480	8.7	3,090	8.4	6.8	13.6
(% by claimants):						
Waiting days	394	1.0	338	0.9	1.0	0.8
Entitlement exhausted	872	2.2	811	2.2	1.5	4.5
Entitlement not yet determined	205	0.5	423	1.1	0.8	2.3
Contribution deficiency	1,121	2.8	827	2.2	1.9	3.4
Benefit disallowed or sanctioned(1)	550	1.4	386	1.0	1.0	1.1
Other	339	0.8	305	0.8	0.6	0.5

1. Includes claimants who lose entitlement because they have earnings or income above prescribed levels

Chart 3A: Unemployed JSA claimants not in receipt of any unemployment-related benefit by reason for non-payment - November 2001

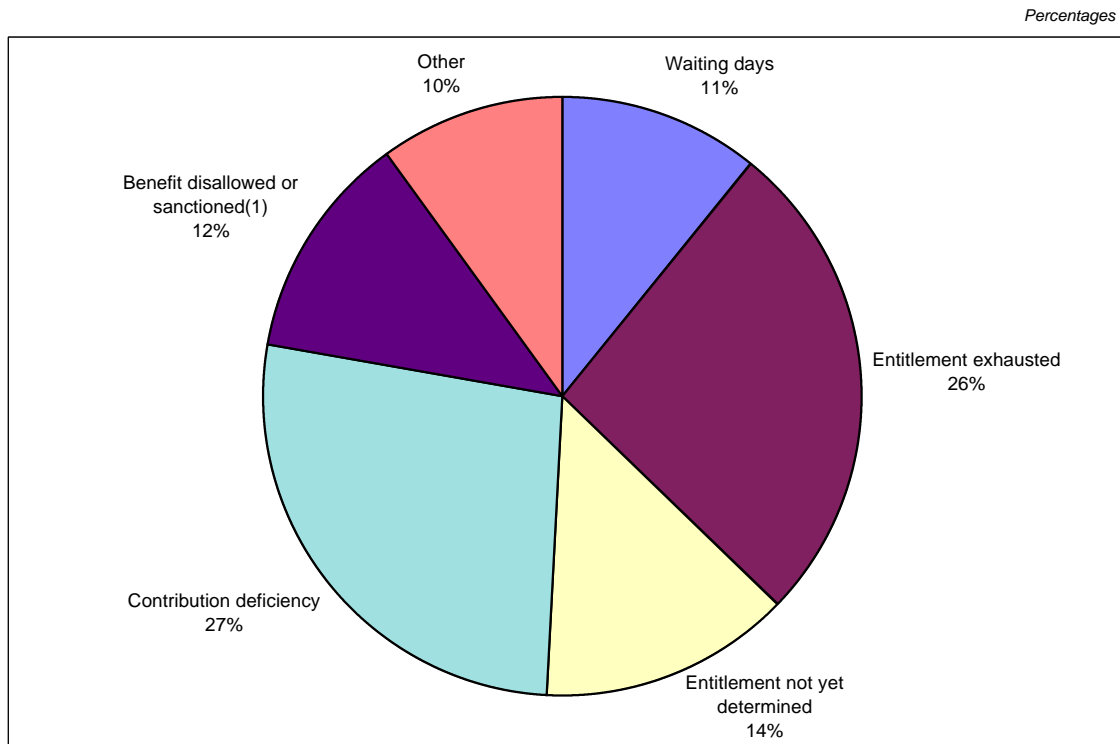


Table 4.1: JSA claimants at November 2001: by District Council and benefit position

District Council	All Claimants (' 000 = 100%)	Type of unemployment related benefit				
		All with benefit	Contribution based only	Contribution and income based	Income based only	No benefit in payment
All	36,854	33,764	4,616	369	28,780	3,090
Antrim	679	621	101	5	515	58
Ards	1,202	1,048	155	0	893	154
Armagh	973	873	103	16	753	100
Ballymena	878	748	142	6	601	130
Ballymoney	485	453	69	9	375	32
Banbridge	480	403	57	11	335	77
Belfast	8,598	8,233	796	71	7,366	365
Carrickfergus	714	631	122	10	500	83
Castlereagh	759	666	111	5	550	93
Coleraine	1,352	1,194	221	9	964	158
Cookstown	388	357	51	12	294	31
Craigavon	1,404	1,259	224	15	1,020	145
Derry	4,352	4,068	464	36	3,568	284
Down	1,188	1,072	127	22	923	116
Dungannon	616	573	115	10	449	43
Fermanagh	1,705	1,530	266	11	1,253	175
Larne	616	574	155	0	419	42
Limavady	811	725	106	5	614	86
Lisburn	1,749	1,623	241	25	1,356	126
Magherafelt	533	476	57	6	413	57
Moyle	469	421	42	9	369	48
Newry & Mourne	2,011	1,876	205	21	1,651	135
Newtownabbey	1,251	1,113	196	20	897	138
North Down	1,172	1,031	255	28	748	142
Omagh	1,234	1,092	124	0	968	142
Strabane	1,235	1,106	111	9	986	129

Note: The allocation of allowances to District Council is based on the postcode of the recipient. There is evidence that this process is not equally accurate for all District Councils.



Table 4.2: JSA claimants at November 2001: by District Council and benefit position

District Council	All Claimants (' 000 = 100%)	Type of unemployment related benefit				
		All with benefit	Contribution based only	Contribution and income based	Income based only	No benefit in payment
All	36,854	91.6%	12.5%	1.0%	78.1%	8.4%
Antrim	679	91.4%	14.8%	0.8%	75.8%	8.6%
Ards	1,202	87.2%	12.9%	0.0%	74.3%	12.8%
Armagh	973	89.7%	10.6%	1.7%	77.4%	10.3%
Ballymena	878	85.2%	16.2%	0.6%	68.4%	14.8%
Ballymoney	485	93.4%	14.1%	1.9%	77.4%	6.6%
Banbridge	480	83.9%	11.9%	2.2%	69.9%	16.1%
Belfast	8,598	95.8%	9.3%	0.8%	85.7%	4.2%
Carrickfergus	714	88.4%	17.0%	1.4%	70.0%	11.6%
Castlereagh	759	87.7%	14.7%	0.6%	72.4%	12.3%
Coleraine	1,352	88.3%	16.4%	0.7%	71.3%	11.7%
Cookstown	388	92.1%	13.1%	3.2%	75.8%	7.9%
Craigavon	1,404	89.6%	16.0%	1.0%	72.6%	10.4%
Derry	4,352	93.5%	10.7%	0.8%	82.0%	6.5%
Down	1,188	90.2%	10.7%	1.9%	77.7%	9.8%
Dungannon	616	93.0%	18.6%	1.6%	72.9%	7.0%
Fermanagh	1,705	89.7%	15.6%	0.6%	73.5%	10.3%
Larne	616	93.1%	25.2%	0.0%	68.0%	6.9%
Limavady	811	89.3%	13.0%	0.6%	75.7%	10.7%
Lisburn	1,749	92.8%	13.8%	1.5%	77.5%	7.2%
Magherafelt	533	89.3%	10.7%	1.1%	77.5%	10.7%
Moyle	469	89.7%	9.0%	1.9%	78.7%	10.3%
Newry & Mourne	2,011	93.3%	10.2%	1.0%	82.1%	6.7%
Newtownabbey	1,251	88.9%	15.6%	1.6%	71.7%	11.1%
North Down	1,172	87.9%	21.7%	2.4%	63.8%	12.1%
Omagh	1,234	88.5%	10.1%	0.0%	78.5%	11.5%
Strabane	1,235	89.6%	9.0%	0.7%	79.8%	10.4%



Table 4.3: JSA claimants at November 2001: by District Council and as a percentage of the working age population

District Council	All Claimants (* 000 = 100%)	Working age Population *	Claimants as % of Population
All	36,854	1,030,400	3.6%
Antrim	679	32,900	2.1%
Ards	1,202	45,500	2.6%
Armagh	973	33,100	2.9%
Ballymena	878	37,000	2.4%
Ballymoney	485	15,900	3.1%
Banbridge	480	25,700	1.9%
Belfast	8,598	165,800	5.2%
Carrickfergus	714	23,800	3.0%
Castlereagh	759	40,200	1.9%
Coleraine	1,352	34,300	3.9%
Cookstown	388	19,200	2.0%
Craigavon	1,404	48,900	2.9%
Derry	4,352	65,300	6.7%
Down	1,188	38,400	3.1%
Dungannon	616	29,300	2.1%
Fermanagh	1,705	34,300	5.0%
Larne	616	18,900	3.3%
Limavady	811	19,700	4.1%
Lisburn	1,749	68,500	2.6%
Magherafelt	533	23,300	2.3%
Moyle	469	9,300	5.0%
Newry & Mourne	2,011	52,400	3.8%
Newtownabbey	1,251	50,700	2.5%
North Down	1,172	45,700	2.6%
Omagh	1,234	29,100	4.2%
Strabane	1,235	23,200	5.3%

* =Mid 2000 estimates. Population of working age. Namely 16-59 for Females, and ages 16-64 for Males.

Note: The allocation of allowances to District Council is based on the postcode of the recipient.

There is evidence that this process is not equally accurate for all District Councils.



Table 4.4: JSA claimants at November 2001: by Social Security Office and benefit position

Social Security Office	All Claimants (' 000 = 100%)	Type of unemployment related benefit				
		All with benefit	Contribution based only	Contribution and income based	Income based only	No benefit in payment
All	36,854	33,764	4,616	369	28,780	3,090
Antrim	817	734	119	10	604	83
Armagh	893	820	87	16	717	73
Ballymena	991	842	148	6	689	149
Ballymoney	781	736	111	14	611	46
Ballynahinch	262	229	44	11	174	33
Banbridge	478	391	43	11	338	87
Bangor	1,207	1,056	237	28	791	152
Belfast - Andersonstown	1,985	1,894	133	21	1,740	91
Belfast - Corporation Street	1,980	1,894	136	15	1,744	86
Belfast - Falls Road	1,471	1,451	71	0	1,380	20
Belfast - Holywood Road	1,414	1,245	238	10	997	169
Belfast - Knockbreda	848	773	111	20	642	75
Belfast - Shaftsbury Square	1,295	1,224	183	0	1,042	70
Belfast - Shankill Road	1,294	1,269	126	15	1,128	25
Carrickfergus	715	624	122	10	493	91
Coleraine	1,412	1,245	217	14	1,014	167
Cookstown	293	266	28	6	233	26
Downpatrick	608	541	44	11	486	66
Dungannon	532	490	97	16	377	43
Enniskillen	1,784	1,594	275	11	1,309	190
Kilkeel	193	184	49	0	135	9
Larne	586	552	155	0	397	35
Limavady	741	655	101	5	549	86
Lisburn	930	854	184	20	650	76
Lisnagelvin	1,194	1,092	136	15	940	102
Londonderry / Foyle	3,253	3,071	337	21	2,714	182
Lurgan	892	797	164	10	624	95
Magherafelt	624	561	69	6	487	62
Newcastle	406	373	53	0	320	33
Newry	1,775	1,660	151	21	1,487	116
Newtownabbey	1,103	992	184	15	794	111
Newtownards	1,015	912	139	0	773	104
Omagh	1,213	1,085	134	0	951	128
Portadown	639	562	86	5	471	77
Strabane	1,230	1,096	106	9	981	134

Table 4.5: JSA claimants at November 2001: by Social Security Office and benefit position

Social Security Office	All Claimants (' 000 = 100%)	Type of unemployment related benefit				
		All with benefit	Contribution based only	Contribution and income based	Income based only	No benefit in payment
All	36,854	91.6%	12.5%	1.0%	78.1%	8.4%
Antrim	817	89.9%	14.6%	1.3%	74.0%	10.1%
Armagh	893	91.8%	9.7%	1.8%	80.3%	8.2%
Ballymena	991	85.0%	14.9%	0.6%	69.5%	15.0%
Ballymoney	781	94.2%	14.2%	1.8%	78.2%	5.8%
Ballynahinch	262	87.5%	16.8%	4.2%	66.4%	12.5%
Banbridge	478	81.8%	8.9%	2.2%	70.6%	18.2%
Bangor	1,207	87.4%	19.6%	2.3%	65.5%	12.6%
Belfast - Andersonstown	1,985	95.4%	6.7%	1.0%	87.7%	4.6%
Belfast - Corporation Street	1,980	95.7%	6.8%	0.8%	88.1%	4.3%
Belfast - Falls Road	1,471	98.6%	4.8%	0.0%	93.8%	1.4%
Belfast - Holywood Road	1,414	88.0%	16.8%	0.7%	70.5%	12.0%
Belfast - Knockbreda	848	91.1%	13.1%	2.4%	75.7%	8.9%
Belfast - Shaftsbury Square	1,295	94.6%	14.1%	0.0%	80.5%	5.4%
Belfast - Shankill Road	1,294	98.1%	9.7%	1.2%	87.2%	1.9%
Carrickfergus	715	87.3%	17.0%	1.4%	69.0%	12.7%
Coleraine	1,412	88.2%	15.4%	1.0%	71.8%	11.8%
Cookstown	293	91.1%	9.5%	2.1%	79.5%	8.9%
Downpatrick	608	89.1%	7.3%	1.8%	80.0%	10.9%
Dungannon	532	92.0%	18.2%	3.0%	70.8%	8.0%
Enniskillen	1,784	89.4%	15.4%	0.6%	73.4%	10.6%
Kilkeel	193	95.3%	25.2%	0.0%	70.1%	4.7%
Larne	586	94.1%	26.5%	0.0%	67.7%	5.9%
Limavady	741	88.3%	13.7%	0.7%	74.0%	11.7%
Lisburn	930	91.8%	19.7%	2.2%	69.9%	8.2%
Lisnagelvin	1,194	91.4%	11.4%	1.3%	78.7%	8.6%
Londonderry / Foyle	3,253	94.4%	10.4%	0.6%	83.4%	5.6%
Lurgan	892	89.4%	18.4%	1.1%	69.9%	10.6%
Magherafelt	624	90.0%	11.0%	0.9%	78.0%	10.0%
Newcastle	406	91.9%	13.1%	0.0%	78.8%	8.1%
Newry	1,775	93.5%	8.5%	1.2%	83.8%	6.5%
Newtownabbey	1,103	90.0%	16.6%	1.3%	72.0%	10.0%
Newtownards	1,015	89.8%	13.7%	0.0%	76.1%	10.2%
Omagh	1,213	89.5%	11.1%	0.0%	78.4%	10.5%
Portadown	639	87.9%	13.5%	0.8%	73.7%	12.1%
Strabane	1,230	89.1%	8.6%	0.7%	79.8%	10.9%

**Table 5.1: JSA claimants by Government Office Region:
November 2000 and November 2001**

<i>Thousands</i>			
GOR	Nov 2000	Nov 2001	Annual % change
United Kingdom	1,000	926	-7.4
North East	68	60	-10.9
North West	124	116	-6.4
Yorks & Humberside	98	90	-8.3
East Midlands	63	58	-8.2
West Midlands	102	92	-10.3
East	57	52	-8.8
London	161	158	-2.0
South East	71	65	-8.8
South West	56	50	-10.5
Wales	54	47	-12.3
Scotland	106	101	-4.9
Northern Ireland	40	37	-7.5

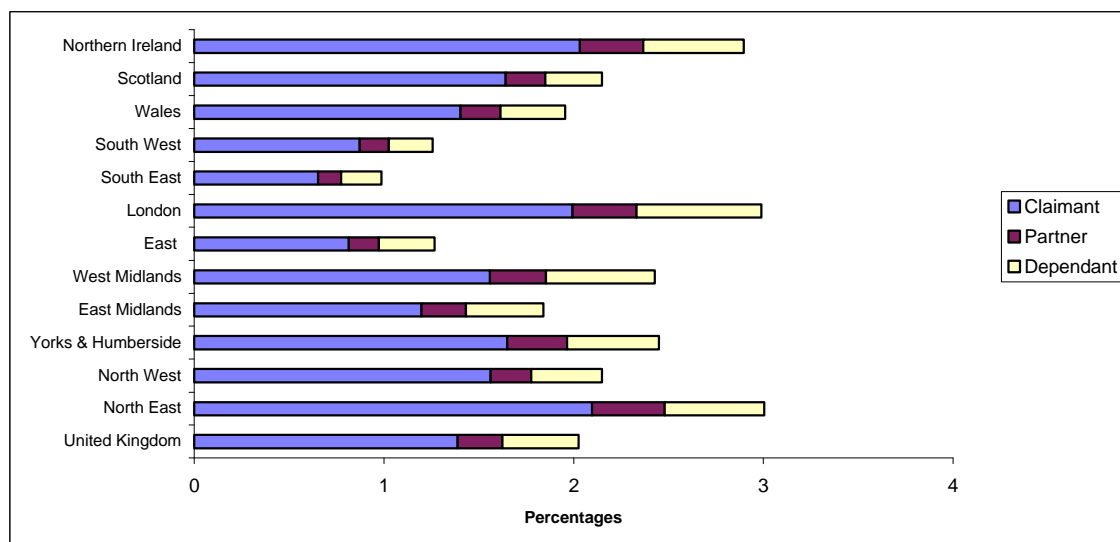
Table 5.2: Beneficiaries of income - based JSA by type and GOR: November 2001

Thousands

GOR	Type of beneficiary				Beneficiaries as % of regions population aged under state retirement age ⁽¹⁾ %
	All	Claimant	Partner	Dependant	
United Kingdom	993	679	115	197	2.0
North East	64	44	8	11	3.1
North West	121	88	12	21	2.1
Yorks & Humberside	101	68	13	20	2.5
East Midlands	63	41	8	14	1.8
West Midlands	107	68	13	25	2.5
East	56	36	7	13	1.3
London	186	124	21	41	3.0
South East	65	43	8	14	1.0
South West	49	34	6	9	1.3
Wales	46	33	5	8	2.0
Scotland	93	71	9	13	2.1
Northern Ireland	42	29	5	8	2.9

⁽¹⁾ 65 for men and 60 for women. Based on mid-year 2000 population estimates.

Chart 5A: Beneficiaries of income - based JSA by type as a percentage of the population aged under state retirement age ⁽¹⁾ : November 2001



⁽¹⁾ 65 for men and 60 for women. Based on mid-year 2000 population estimates.

Table 6.1 Unemployed JSA claimants by gender, marital status and benefit entitlement - November 2001

Claimants	All Claimants ('000=100%)	All with benefit	Type of unemployment related benefit			
			Contribution based only %	Contribution and income based %	Income based only %	No benefit in payment %
All	36,854	91.6	12.5	1.0	78.1	8.4
All males	28,124	93.2	11.5	1.1	80.7	6.8
Single	21,742	96.6	11.7	0.3	84.6	3.4
With partner	6,382	81.9	10.6	4.0	67.3	18.1
All females	8,730	86.4	15.9	0.6	69.8	13.6
Single	6,961	95.3	10.5	0.6	84.2	4.7
With partner	1,769	51.3	37.4	0.9	13.0	48.7

Chart 6A: Unemployed JSA claimants by gender and marital status - November 2001

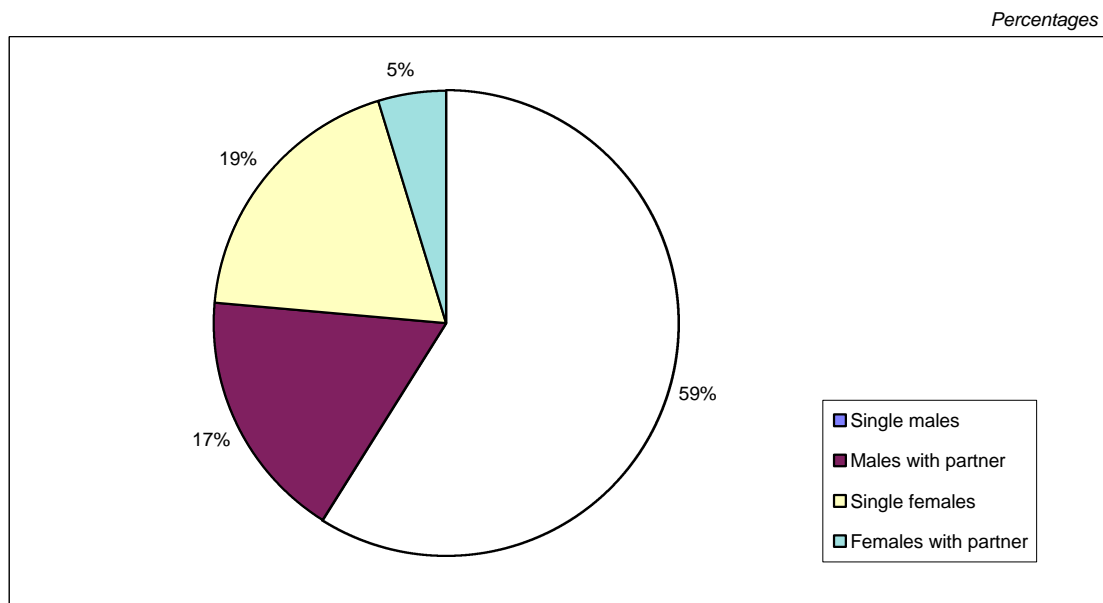


Table 6.2 Unemployed JSA claimants by age and benefit entitlement - November 2001

Claimants age	All Claimants (*000=100%)	All with benefit	Type of unemployment related benefit			
			Contribution based only %	Contribution and income based %	Income based only %	No benefit in payment %
All ages	36,854	91.6	12.5	1.0	78.1	8.4
Under 20	3,874	96.5	0.6	0.0	95.8	3.5
20-24	6,668	94.9	15.6	0.5	78.9	5.1
25-29	4,903	95.7	19.1	1.3	75.3	4.3
30-34	4,404	94.4	17.3	0.9	76.1	5.6
35-39	4,091	93.3	13.7	1.2	78.3	6.7
40-44	3,343	92.3	9.7	2.4	80.2	7.7
45-49	3,042	90.6	11.1	1.4	78.1	9.4
50-54	3,308	83.1	9.2	0.4	73.5	16.9
55-59	2,945	76.0	9.3	1.2	65.4	24.0
60 and over	277	76.0	19.8	3.8	52.4	24.0

**Table 6.3: Unemployed claimants by gender and age:
November 2000 and November 2001**

Claimants age	Nov-00		Nov-01		Men %	Women %
	Total ('000=100%)	Men %	Total ('000=100%)	Men %		
All ages	40,007	76.4	23.6	36,854	76.3	23.7
Under 20	3,708	59.8	40.2	3,874	62.5	37.5
20-24	6,642	71.9	28.1	6,668	71.1	28.9
25-29	5,726	79.5	20.5	4,903	79.6	20.4
30-34	5,008	82.9	17.1	4,404	84.3	15.7
35-39	4,566	84.0	16.0	4,091	83.7	16.3
40-44	3,855	82.0	18.0	3,343	79.9	20.1
45-49	3,675	75.8	24.2	3,042	77.6	22.4
50-54	3,496	74.2	25.8	3,308	73.1	26.9
55-59	3,006	72.7	27.3	2,945	74.6	25.4
60 and over	325	100.0	0.0	277	100.0	0.0

**Chart 6B: Unemployed claimants by gender and age:
November 2000 and November 2001**

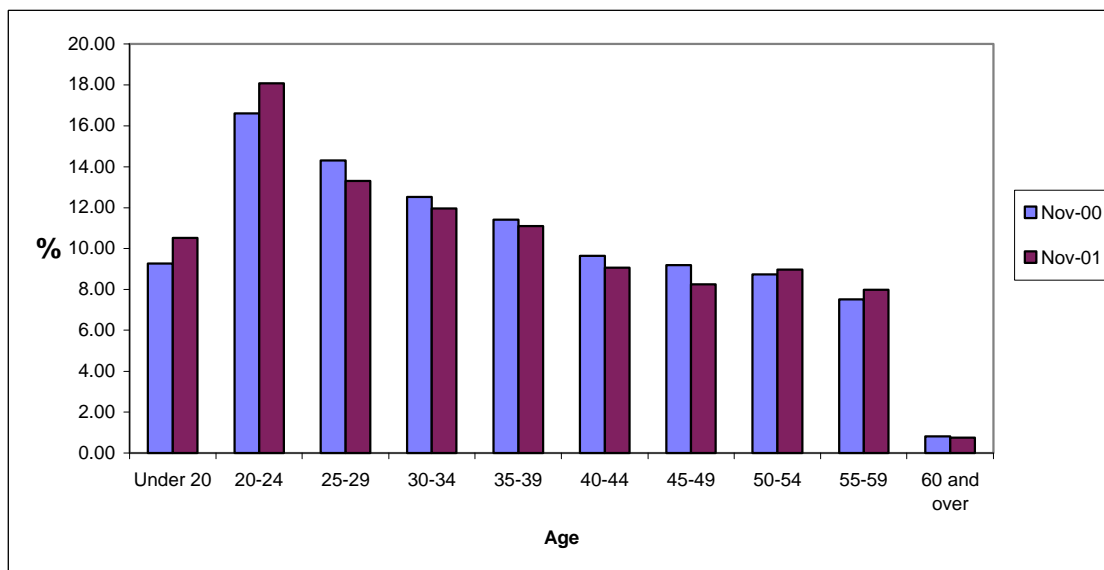


Table 7.1: Unemployed claimants with contribution-based benefit entitlement (1) by average weekly amount - 1997-2001

	All		Personal claim only (2)	
	Number	Average amount £pw	Number	Average amount £pw
JSA(1)				
Nov-97	5,640	£46.10	5,640	£46.10
Nov-98	5,601	£47.28	5,601	£47.28
Nov-99	4,445	£47.83	4,445	£47.83
Nov-00	4,965	£49.26	4,965	£49.26
Nov-01	4,985	£49.83	4,985	£49.83

1. Includes claimants in receipt of income-based JSA who would be entitled to the contributory element.

2. Adult dependency increase is not payable to claimants coming onto benefit after October 1996 and ceased in April 1997.

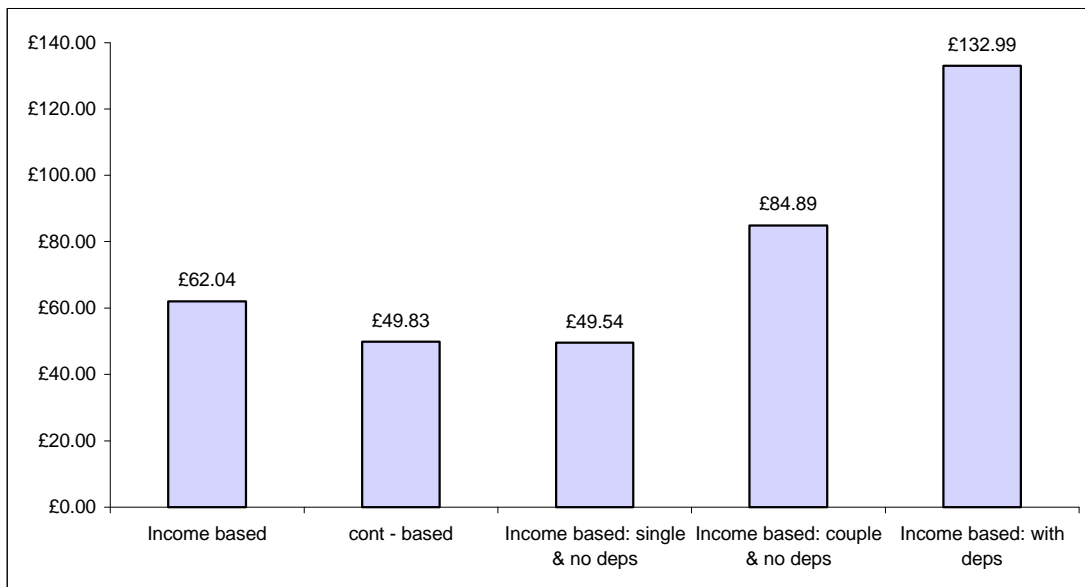


Table 7.2: Unemployed claimants with income-based benefit (1) by average weekly amount - 1997-2001

	All		Single without dependants		Couple without dependants		Single or couple with dependants	
	Number	Average amount £pw	Number	Average amount £pw	Number	Average amount £pw	Number	Average amount £pw
JSA(1)								
Nov-97	49,188	£61.23	35,863	£45.76	3,698	£69.63	9,627	£115.61
Nov-98	45,367	£62.50	33,590	£47.15	3,500	£73.00	8,277	£120.33
Nov-99	36,348	£61.64	28,656	£48.04	2,075	£80.68	5,617	£123.98
Nov-00	31,990	£62.29	25,926	£48.88	1,682	£80.68	4,382	£134.56
Nov-01	29,149	£62.04	23,889	£49.54	1,550	£84.89	3,710	£132.99

1. Includes claimants in receipt of income-based JSA who would be entitled to the contributory element. Only the amount of income-based award above the level of contributon based award is included.

Chart 7A: Average weekly amount of JSA in payment by benefit and family type - November 2001



ANNEX 1: TECHNICAL DETAILS

A 20% sample of all claimants of JSA is conducted on the second Thursday in February, November, August and November of each year. The sample data are used to make estimates of the total number of JSA claimants in Northern Ireland.

The JSA QSE covers all unemployed people who claim JSA, including credits only cases. The JSA QSE also collects data on participants of government training schemes. However, analysis of this group is not yet possible.

The data is extracted from the JSA payment system (JSAPS). Claimants are selected for the sample based on National Insurance endings. The same endings are used each quarter to ensure continuity. The data is physically extracted from JSAPS 21 days after the enquiry date. This allows for claims, which had not been put on the system at the enquiry date, or claims, which had ended before the enquiry date and should have been excluded.

The Department of Enterprise Trade and Investment (DETI) unemployment count is used to gross up the sample. The JSA QSE is taken from the same source as the DETI unemployed claimant count. The DETI count also includes clerically processed claims, which means these are also reflected in the results. Temporarily stopped cases are now omitted for post-JSA cases, as these on average number less than fifty. Both the JSA QSE and the DETI count allow 21 days after the enquiry date for late claims and early terminations.

Automated validation checks have been carried out on data from November 1998 only. The JSA QSE is designed to cover all people who claim JSA, including those on government training schemes, however the training scheme cases are not included in this analysis. The data are not seasonally adjusted. DETI produce a headline count of claimant unemployment each month. DETI exclude claimants on government training schemes in their count. Data from each can be used to complement one another to provide consistent estimates of the number of unemployed JSA claimants.

ANNEX 2: BACKGROUND TO JSA

Jobseeker's Allowance (JSA) replaced Unemployment Benefit and Income Support for unemployed people on 7 October 1996. JSA is for people who are unemployed or working less than 16 hours a week, are available for work for at least 40 hours a week, actively looking for work, and people on a Government training scheme. They must not be in relevant education and be under pensionable age (i.e. 60 years for females and 65 for males). Young people aged 16-17 are generally excluded from claiming, however there are exceptions such as suffering severe hardship.

There are two routes of entry into JSA, contribution-based JSA and income-based JSA. Contribution-based is payable for up to 6 months to those people who have paid sufficient national insurances and is taxable. Income-based JSA is means-tested and taxable. It is usually paid when someone does not qualify for contribution-based or as a top up to contribution-based JSA. Claimants can not claim both income-based and contribution-based JSA, however in this publication we have classified claimants who receive income-based JSA but who have underlying rights to contribution-based JSA into a group on their own.

Credits are awarded for each week of claiming JSA. Credits can be awarded even though the person is not being paid JSA. This is the case when either they have not paid enough contributions, they already have received their full entitlement of contribution-based JSA, they are not entitled to income-based JSA or they choose not to claim JSA.

Benefit November be disallowed if the claimant does not fulfil the basic 'labour market' conditions. In some cases even if you do satisfy the basic conditions your benefit November be 'sanctioned' and payment stopped for a limited period. In this instance you November be eligible for a hardship payment which is a reduced rate income-based JSA payment.

ANNEX 3: SAMPLING ERRORS

The estimates in the tables in this report are based on a 20% sample and are therefore subject to 'sampling error', i.e. the number of cases in the sample November produce rated up population estimates which are lower or higher than the true population value.

An indication of the effect of these sampling errors can be gained from the tables of 'confidence intervals' shown below. The figures shown in this report are a best estimate based on the sample data. The true number will lie somewhere in a range around this estimate. The size of this range is based on a "95% confidence interval" i.e. there is a 1 in 20 chance that the true value lies outside this range. Thus, for example, an estimate of 1,000 is really showing that the true value could lie anywhere in the range of 876 to 1,124. This applies only to estimates of numbers of cases and not to other features, e.g. amounts of benefit.

The figures in the table below give the 95% confidence intervals for the true value in the population, based on the estimated value from the 5% sample.

Estimated Value	95% Confidence Interval (+/-)	Confidence interval as a % of the estimate (+/-)
150	48	32
300	68	23
400	78	20
500	88	18
600	96	16
700	104	15
800	111	14
900	118	13
1000	124	12
2000	175	9
3000	215	7
4000	248	6
5000	277	6
6000	304	5
7000	328	5
8000	351	4
9000	372	4
10000	392	4
20000	554	3
30000	679	2
40000	784	2
50000	877	2

Warning: Figures in italics should be used with caution

List of Tables**Section 1: Caseload by benefit entitlement**

Table 1.1 Unemployed Claimants by benefit entitlement - 1996 to 2001

Table 1.2 Unemployed Claimants by benefit entitlement - 1996 to 2001

Section 2: Duration of claim

Table 2.1 Unemployed Claimants by duration of claim - November 1998 to November 2001

Table 2.2 Unemployed Claimants by benefit entitlement and duration of current claim – November 2001

Table 2.3 Unemployed Claimants by gender, age and duration of current claim - November 2001

Section 3: Claims without contribution and income-based benefit

Table 3.1 Unemployed Claimants : receipt/non-receipt of contribution-based benefit by gender - November 2000 and November 2001

Table 3.2 Unemployed Claimants not in receipt of contribution-based benefit by gender and benefit reason - November 2000 and November 2001

Table 3.3 Unemployed Claimants : receipt/non-receipt of unemployment-related benefit by gender - November 2000 and November 2001

Table 3.4 Unemployed Claimants not in receipt of unemployment-related benefit by gender and benefit reason - November 2000 and November 2001

Section 4: District Council and Social Security Office analysis

Table 4.1 JSA Claimants at November 2001: by District Council and benefit position

Table 4.2 JSA Claimants at November 2001: by District Council and benefit position

Table 4.3 JSA Claimants at November 2001: by District Council and as a percentage of the working age population



Table 4.4 JSA Claimants at November 2001: by Social Security Office and benefit position

Table 4.5 JSA Claimants at November 2001: by Social Security Office and benefit position

Section 5: United Kingdom Regional analysis

Table 5.1 JSA Claimants by Government Office Region: November 2000 and November 2001

Table 5.2 Beneficiaries of income-based JSA by type and Government Office Region: November 2001

Section 6: Gender, age and marital status

Table 6.1 Unemployed JSA Claimants by gender, marital status and benefit entitlement - November 2001

Table 6.2 Unemployed JSA Claimants by age and benefit entitlement - November 2001

Table 6.3 Unemployed Claimants by gender and age - November 2000 and November 2001

Section 7: Amounts of Benefit

Table 7.1 Unemployed Claimants with contribution-based benefit entitlement by average weekly amount – 1997 - 2001

Table 7.2 Unemployed Claimants with income-based benefit by average weekly amount – 1997 - 2001



ISSN 1475-5769