

# Social Security Summary Statistics

## Northern Ireland

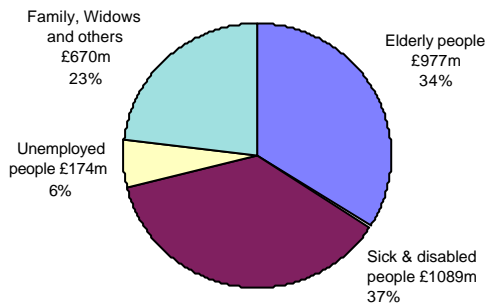


January 2000

A government Statistical Publication

[Visit our website for more detailed information on various benefits](#)

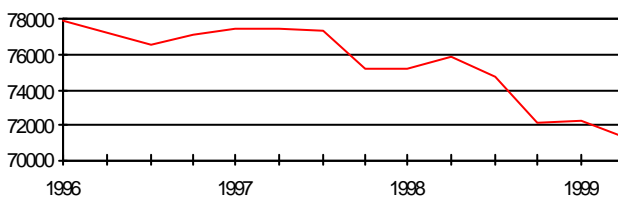
### Social Security Expenditure by Broad Group of Beneficiaries 1998-99 (%)



Source: N.I. Expenditure Plans and Priorities: The Government's Expenditure Plans 1999-2000

### Incapacity Benefit

Number of Recipients (excluding credits only cases)

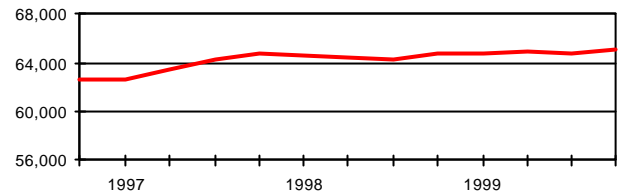


At May 1999:

<b>Total claimants:</b>	<b>97,161</b>
<b>Total recipients:</b>	<b>71,280</b>
<b>Total long-term claimants</b>	<b>62,753</b>
<b>Average weekly entitlement:</b>	<b>£80.48</b>
(exc. credits only cases)	
<b>% of recipients who are male</b>	<b>61.7%</b>
<b>% of recipients who are female</b>	<b>38.3%</b>

### Attendance Allowance

Number of Recipients

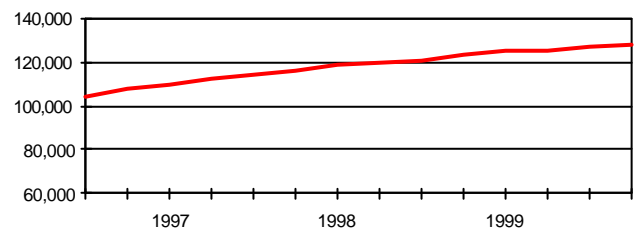


At Nov 1999:

<b>Total recipients:</b>	<b>65,169</b>
<b>Average weekly entitlement:</b>	<b>£47.67</b>
<b>% of recipients who are male</b>	<b>31.9%</b>
<b>% of recipients who are female</b>	<b>68.1%</b>
<b>Average age of male recipients</b>	<b>78</b>
<b>Average age of female recipients</b>	<b>80</b>

### Disability Living Allowance

Number of Recipients



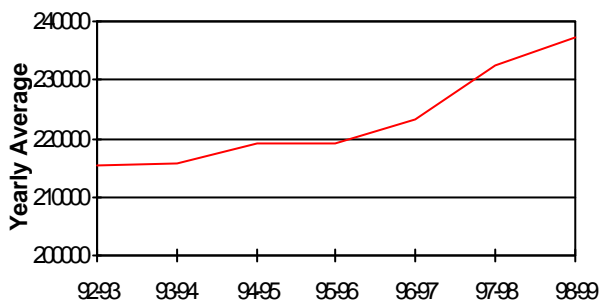
At Nov 1999:

<b>Total recipients:</b>	<b>128,677</b>
- receiving Mobility component only	12.1%
- receiving Care component only	15.8%
- receiving both Care and Mobility component	72.1%
<b>Average weekly entitlement:</b>	<b>£55.78</b>
<b>% of recipients who are male</b>	<b>47.6%</b>
<b>% of recipients who are female</b>	<b>52.4%</b>

For more detailed information on individual benefits visit our website:  
[http://www.dhssni.gov.uk/the\\_department/statistics](http://www.dhssni.gov.uk/the_department/statistics)

## Retirement Pension

Number of Recipients



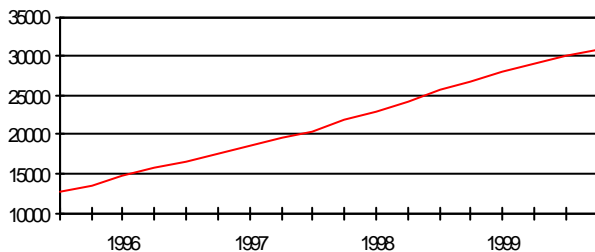
At January 1999:

<b>Total recipients:</b>	<b>237,530</b>
- Male	35%
- Female	65%
<b>Average payment (£pw)</b>	
- All pensioners	£65.73
- Male	£77.41
- Female	£59.46

Note: The information above should replace that contained in July and October 1999 bulletins.

## Child Support Agency

Number of Live and Assessed Cases

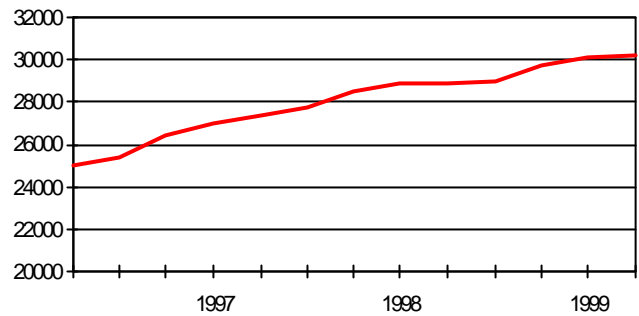


At November 1999:

<b>Total 'live' and assessed cases:</b>	<b>30,871</b>
- full maintenance assessment	29,364
- interim maintenance assessment	1,507
<b>For fully assessed cases:</b>	
Average assessed maintenance	
- for employees	£33.59
- for self-employed	£20.17
For those using the collection service	
- fully compliant	50%
- partially compliant	24%
- nil compliant	26%
Parents with care	
- female	95%
- male	5%

## Family Credit

Number of Recipient Families



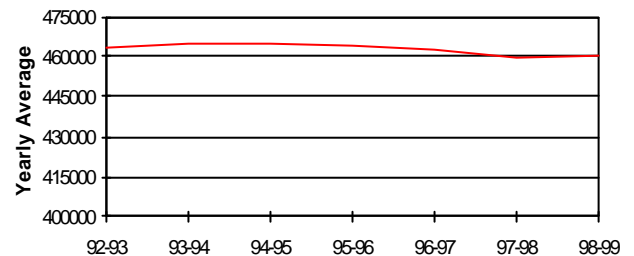
At May 1999:

<b>Total families receiving Family Credit:</b>	<b>30,155</b>
- main earner is male	44%
- main earner is female	56%
<b>Average weekly payment:</b>	<b>£66.71</b>
<b>Average gross earnings</b>	<b>£116.15</b>
<b>Average working week (hours)</b>	<b>30.4</b>
<b>% of families headed by a Lone Parent</b>	<b>45%</b>

Note: Family Credit was replaced by Working Families Tax Credit in October 1999.

## Child Benefit

Number of Children



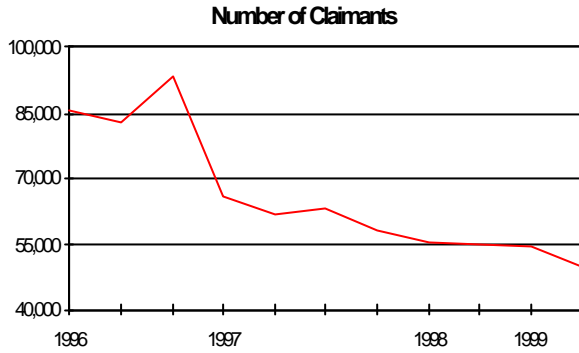
At January 2000:

<b>Total recipient families:</b>	<b>227,550</b>
- with CB (Lone Parent premium)	15.6%
- without CB (Lone Parent premium)	84.4%
<b>Total recipient children:</b>	<b>450,475</b>
- in families with CB (Lone Parent premium)	13.5%
- in families without CB (Lone Parent premium)	86.5%

For more detailed information on individual benefits visit our website:  
[http://www.dhssni.gov.uk/the\\_department/statistics](http://www.dhssni.gov.uk/the_department/statistics)

**Jobseeker's Allowance (Unemployment Benefit and Income Support for the unemployed prior to 7 October 1996)**

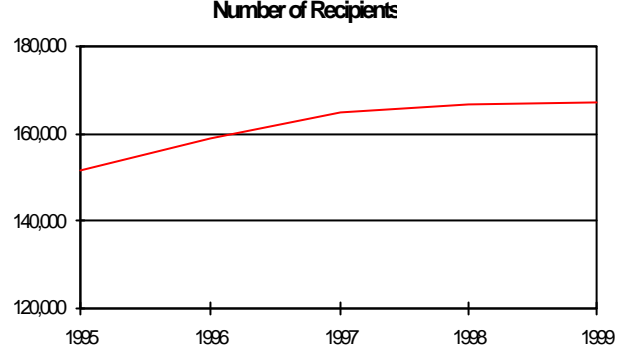
**Income Support (excludes the unemployed)**



**At May 1999:**

<b>Total claimants:</b>	<b>50,005</b>
<b>Total recipients:</b>	<b>46,390</b>
- income-based only	89.1%
- contribution-based only	9.6%
- contribution and income-based	1.3%
<b>Average weekly entitlement:</b>	
- income-based	<b>£63.22</b>
- contribution-based	<b>£47.91</b>
<b>% of recipients who are male</b>	<b>80.4%</b>
<b>% of recipients who are female</b>	<b>19.6%</b>
<b>% claiming more than 1 year</b>	<b>44.1%</b>
<b>% claiming more than 2 years</b>	<b>30.2%</b>

**Note: JSA is based on a 20% sample which has been grossed.**



**At Aug 1999:**

<b>Total recipients:</b>	<b>168,900</b>
- disabled	26.8%
- lone parents	20.3%
- elderly	43.7%
- other	9.2%
<b>Total beneficiaries:</b>	<b>300,040</b>
<b>Average weekly payment:</b>	<b>£62.28</b>
<b>% of recipients who are male</b>	<b>37.6</b>
<b>% of recipients who are female</b>	<b>62.4</b>
<b>% claiming more than 2 years</b>	<b>71.6</b>

**Note: IS is based on a 5% sample which has been grossed.**

**NOTE TO USERS:**

This bulletin provides an up-to-date and concise overview of the main benefits administered by the SSA and CSA. It is based on data available within DSD, Statistics and Research Branch at the end of January 2000. Statistics are based on a 100% sample of information unless otherwise stated. Benefit expenditure information is available in the Northern Ireland Expenditure Plans and Priorities report - the Government's Expenditure Plans 1999-2000 (CM 4217).

**Further information** can be obtained by visiting our web site at [http://www.dhssni.gov.uk/the\\_department/statistics](http://www.dhssni.gov.uk/the_department/statistics) or by contacting:

Paddy Hannigan  
 Department for Social Development,  
 Statistics and Research Branch  
 Annex 1  
 Castle Buildings  
 Stormont  
 Belfast BT4 3UD  
 Tel: (02890) 522062 Fax: (02890) 522763  
 e-mail: paddy.hannigan@dhssni.gov.uk

Caution:  
 Variable scale vertical axes are used to show recent trends.

For more detailed information on individual benefits visit our website:  
[http://www.dhssni.gov.uk/the\\_department/statistics](http://www.dhssni.gov.uk/the_department/statistics)