

Social Security Summary Statistics

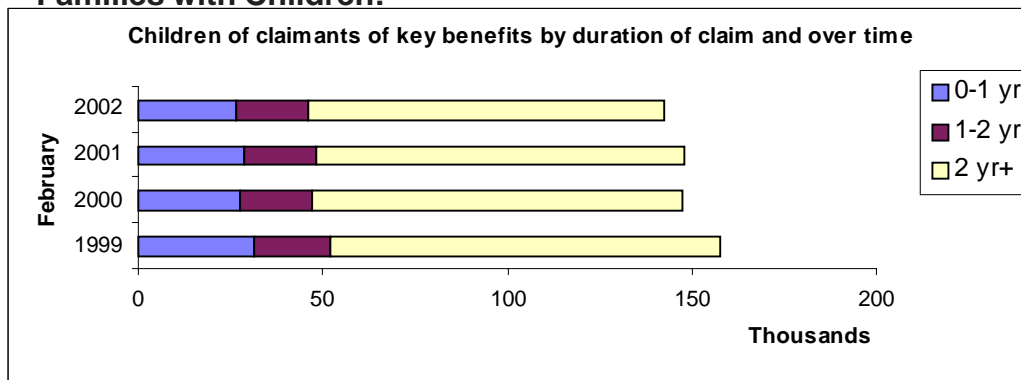


Northern Ireland
A National Statistics Publication
NOVEMBER 2002



For more detailed information visit our website at www.dsdni.gov.uk/statistics-research/introduction.asp

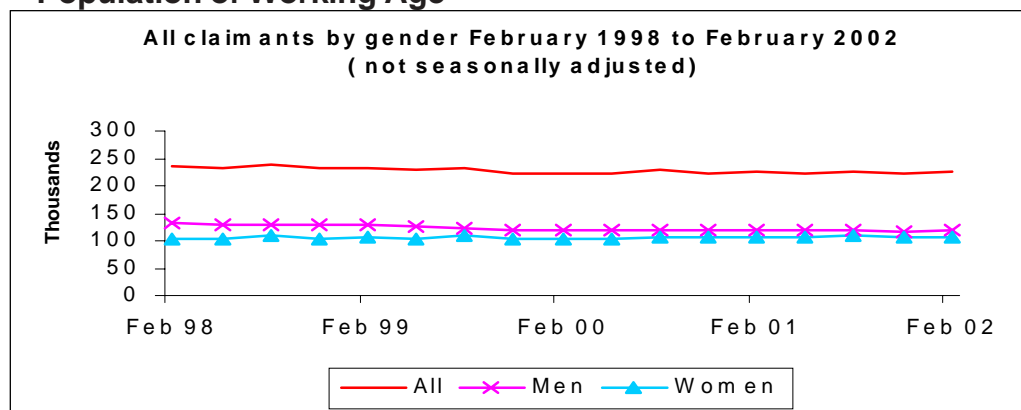
Client Group Analysis: Families with Children:



At February 2002:

- 142,400 children were living in families claiming a key benefit. This number was down by 10% (15,520) from February 1999
- 68% were children of claimants who had been on benefit for at least 2 years

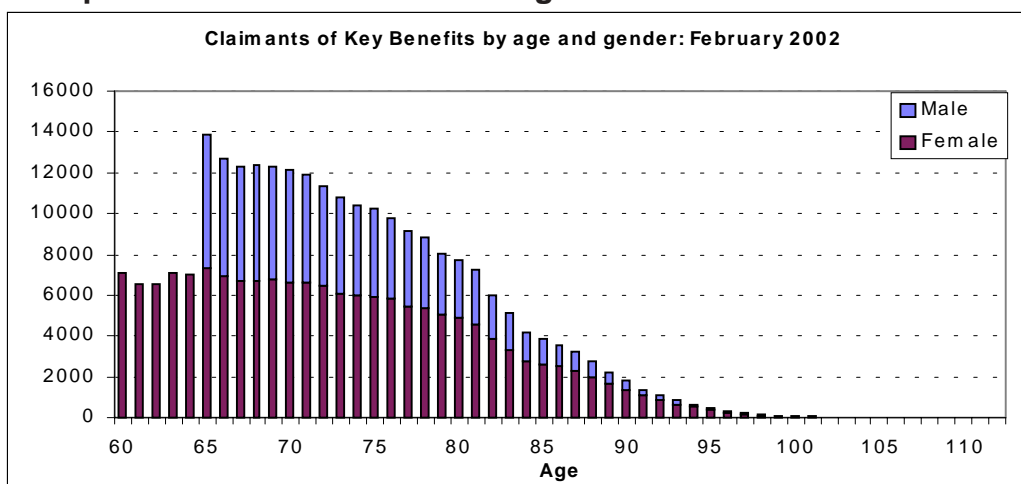
Population of Working Age



At February 2002:

- 22% (224,700) of people of working age claimed a key benefit
- 53% of claimants are men and 47% are women

Population over State Pension Age

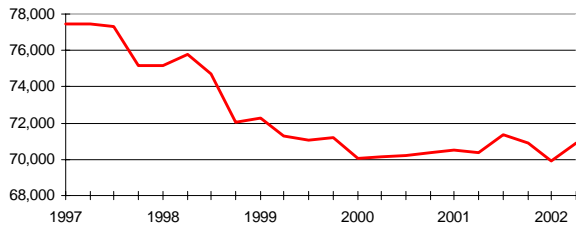


At February 2002:

- 97% (253,762) of people over state pension age claimed a key benefit
- 35% of claimants are men and 65% are women

Incapacity Benefit

Number of Recipients (excluding credits only cases)



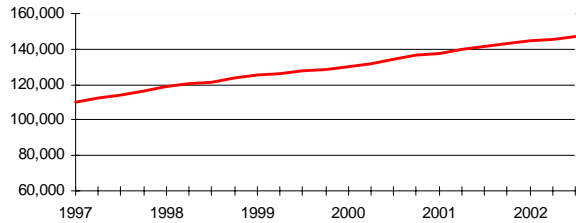
Incapacity Benefit Recipients

At May 2002:

Total claimants:	105,135
Total recipients:	70,872
Total long-term claimants	62,890
Average weekly entitlement:	£81.61
(exc. credits only cases)	
% of recipients who are male	60.9%
% of recipients who are female	39.1%

Disability Living Allowance

Number of Recipients

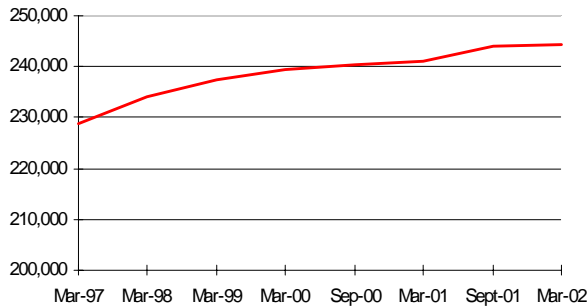


At August 2002:

Total recipients:	146,979
- receiving Mobility component only	11.4%
- receiving Care component only	13.5%
- receiving both Care and Mobility component	75.2%
Average weekly entitlement:	£60.41
% of recipients who are male	47.6%
% of recipients who are female	52.4%

Retirement Pension

Number of Recipients



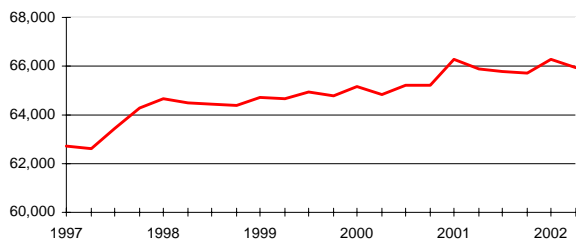
At March 2002

Total recipients:	244,425
- Male	36%
- Female	64%
Average payment (£pw)	
- All pensioners	£75.57
- Male	£88.95
- Female	£68.20

Source: Information is taken from an unvalidated 100% extract of the Retirement Pension Computer System.

Attendance Allowance

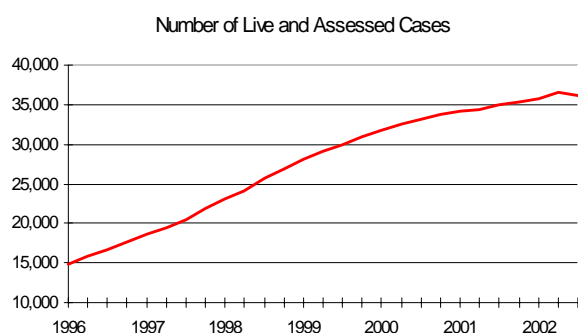
Number of Recipients



At May 2002:

Total recipients:	65,657
Average weekly entitlement:	£51.20
% of recipients who are male	32.5%
% of recipients who are female	67.5%
Average age of male recipients	79
Average age of female recipients	80

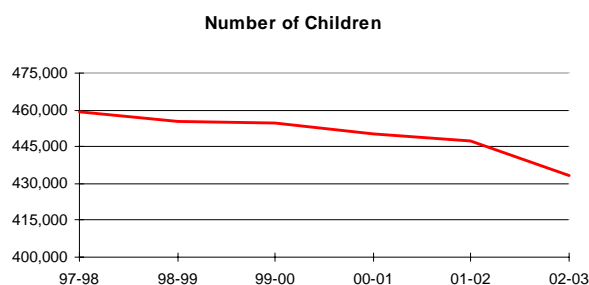
Child Support Agency



At August 2002:

Total 'live' and assessed cases:	36,177
- full maintenance assessment	34,965
- interim maintenance assessment	1,212
For fully assessed cases:	
Average assessed maintenance	
- for employees	£35.41
- for self-employed	£19.90
For those using the collection service	
- fully compliant	56%
- partially compliant	24%
- nil compliant	20%
Parents with care	
- female	95%
- male	5%

Child Benefit



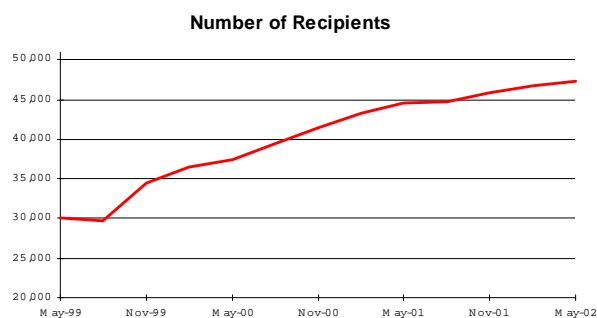
At October 2002:

Total recipient families:	224,725
Total recipient children:	433,150

Source:

Information is taken from Child Benefit Summary Tables

Family Credit/Working Families Tax Credit

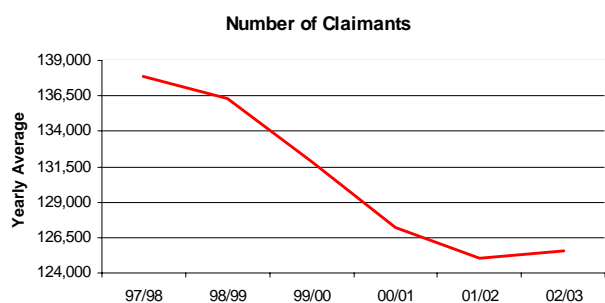


At May 2002:

Total families receiving WFTC:	47,413
- main earner is male	42%
- main earner is female	58%
Average weekly payment:	£88
Average gross earnings	£166
Average working week (hours)	31.1
% of families headed by a Lone Parent	49%

Note: WFTC replaced Family Credit from October 1999.

Housing Benefit



At August 2002:

Total claimants	125,602
Total public rented	65.5%
Total private rented	34.5%
Average weekly entitlement – Public rented	£45.47
Average weekly entitlement – Private rented	£56.65
% of recipients who are male	41.3%
% of recipients who are female	58.7%
% claiming more than 2 years	66.7%

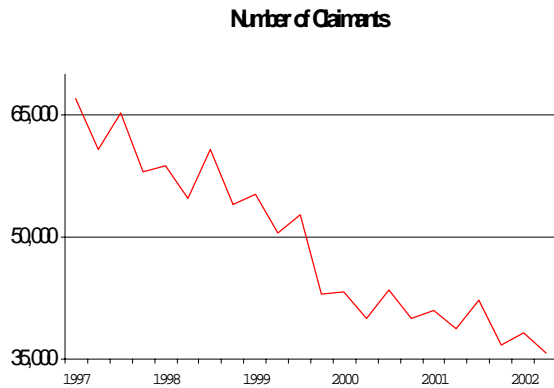
Source:

Information is taken from Housing Benefit Summary Tables

Information is taken from Housing Benefit scan

Jobseeker's Allowance

At May 2002

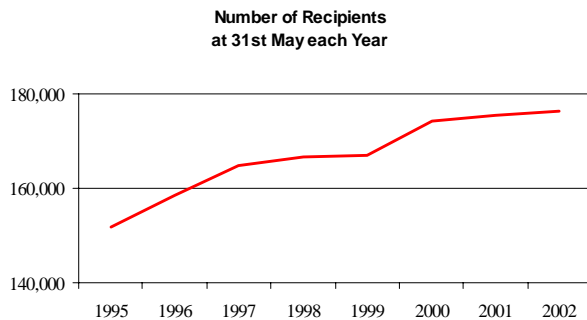


Total claimants:	35,747
Total recipients:	32,709
- income-based only	84.8%
- contribution-based only	13.8%
- contribution and income-based	1.4%
Average weekly entitlement:	
- income-based	£61.99
- contribution-based	£50.48
% of recipients who are male	79.1%
% of recipients who are female	20.9%
% claiming more than 1 year	30.2%
% claiming more than 2 years	14.3%

Sources: ASD 20% sample which has been grossed.

Income Support

At May 2002



Total recipients:	176,280
- disabled	30.2%
- lone parents	17.0%
- elderly	44.1%
- other	8.7%
Total beneficiaries:	303,620
Average weekly payment:	£73.41
% of recipients who are male	40.0%
% of recipients who are female	60.0%
% claiming more than 2 years	73.6%

Source: Information is taken from a validated 5% sample.

A brief description of the analyses included in this publication:

- Client Group Analysis (**Families with children**) combines data collected for Jobseeker's Allowance, Income Support, Disability Living Allowance, Incapacity Benefit and Severe Disablement Allowance on children/young adult dependants for whom additional benefit is payable.
- Client Group Analysis (**Working Age**) combines data collected for Jobseekers Allowance, Incapacity Benefit, Severe Disablement Allowance, Disability Living Allowance and Income Support.
- Client Group Analysis (**Over State Pension Age**) combines data for Attendance Allowance, Disability Living Allowance, Incapacity Benefit, Income Support, Retirement Pension and Severe Disablement Allowance.

NOTE TO USERS:

This Bulletin provides an up to date and concise overview of the main benefits administered by the Social Security Agency, Child Support Agency and Northern Ireland Housing Executive. It also provides information on the Working Families Tax Credit administered by the Inland Revenue. It is based on data available within DSD, Statistics and Research Branch at the end of November 2002. Statistics are based on a 100% sample of information unless otherwise stated.

Further information can be obtained by visiting our web site or by contacting:

Statistics & Research Branch
 Department for Social Development
 Block 4.3, Castle Buildings, Stormont Estate
 Belfast BT4 3SJ Tel - 028 90523339 Fax - 028 90522763
 e-mail - rosemary.crothers@dndi.gov.uk

Caution: Variable scale vertical axes are used to show recent trends.